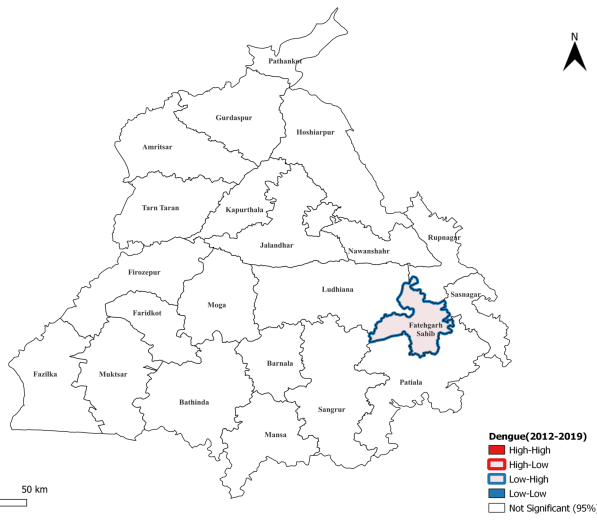
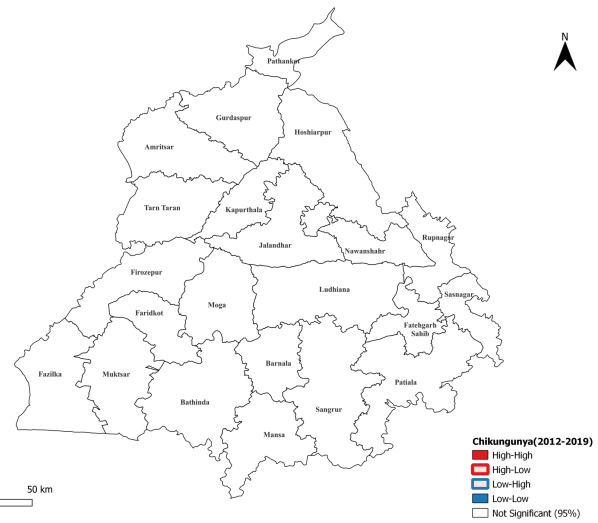
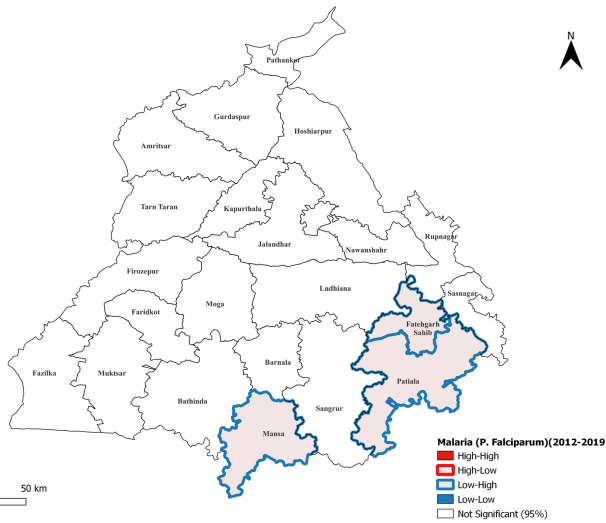
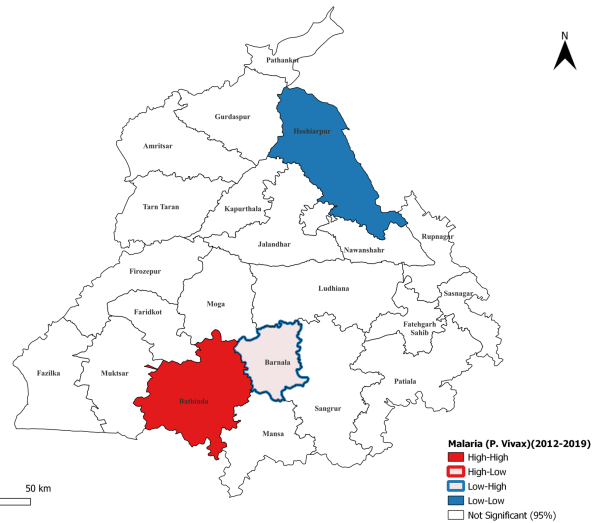
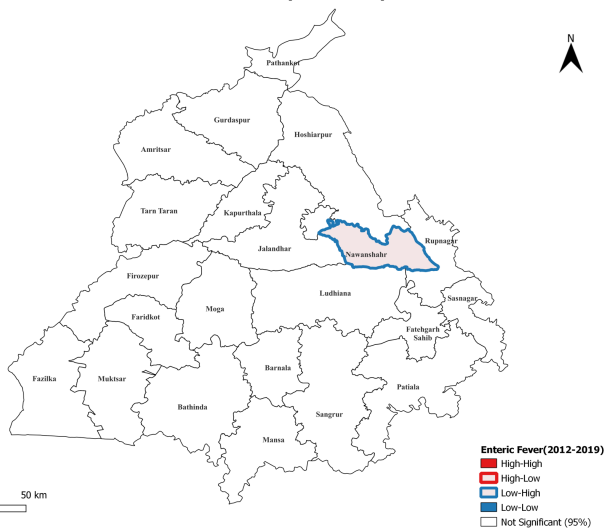
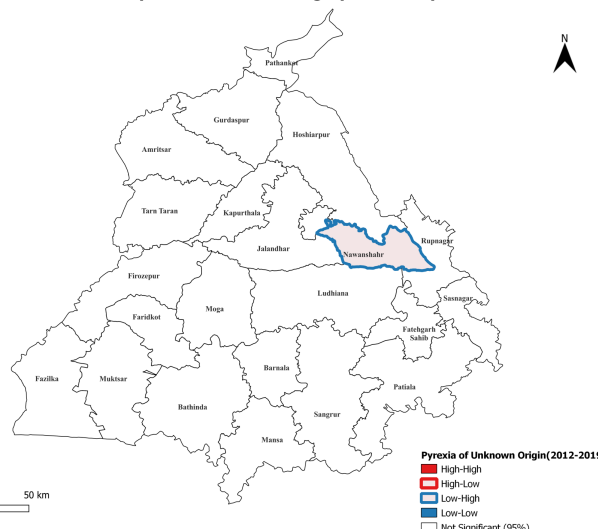


Dengue(2012-2019)**S2 a: Dengue****Chikungunya(2012-2019)****S2 b: Chikungunya****Malaria (P. Falciparum)(2012-2019)****S2 c: Malaria (P. Falciparum)****Malaria (P. Vivax)(2012-2019)****S2 d: Malaria (P. Vivax)****Enteric Fever(2012-2019)****S2 e: Enteric Fever****Pyrexia of Unknown Origin(2012-2019)****S2 f: Pyrexia of Unknown Origin**

Supplementary Material S2(a-f): Moran's I plot depicting the dispersion of average confirmed cases of febrile illnesses reported through IDSP in the state of Punjab (India) between 2012-19