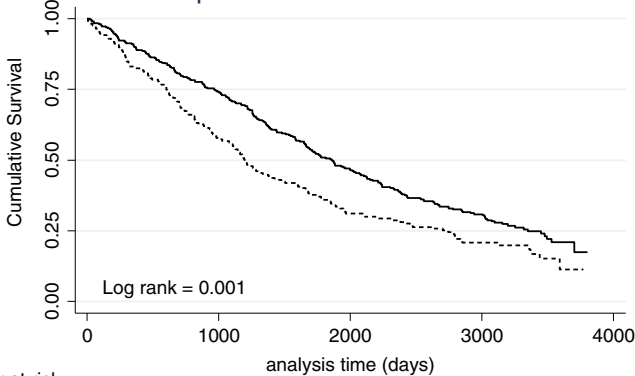
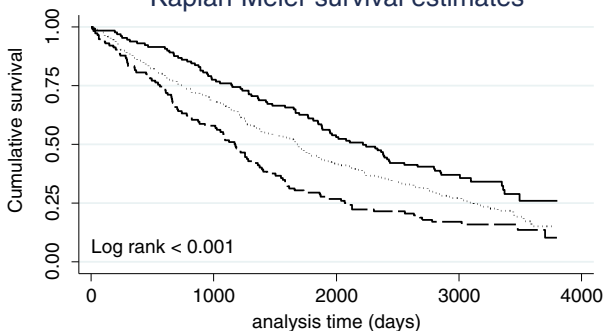


A**Kaplan-Meier survival estimates**

Number at risk

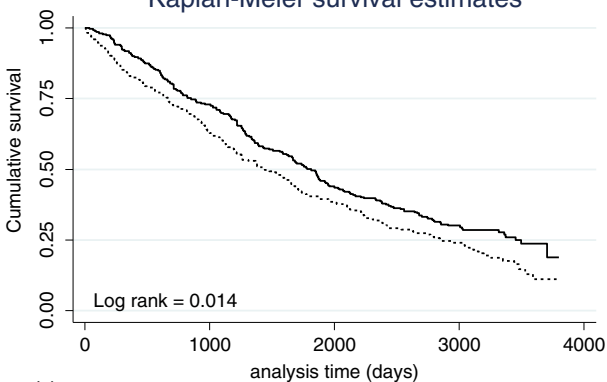
| | 0 | 1000 | 2000 | 3000 | 4000 |
|---------|-----|------|------|------|------|
| < 75 % | 322 | 237 | 148 | 75 | 0 |
| >= 75 % | 171 | 99 | 52 | 24 | 0 |

— < 75 % percentile - - - - - >= 75 % percentile

B**Kaplan-Meier survival estimates**

| | 0 | 1000 | 2000 | 3000 | 4000 |
|------------------|-----|------|------|------|------|
| Moderate COPD | 129 | 100 | 67 | 27 | 0 |
| Severe COPD | 250 | 170 | 103 | 57 | 0 |
| Very severe COPD | 114 | 66 | 30 | 15 | 0 |

— Moderate COPD Severe COPD
 - - - - - Very Severe COPD

C**Kaplan-Meier survival estimates**

| | 0 | 1000 | 2000 | 3000 | 4000 |
|------------------|-----|------|------|------|------|
| <= 40 pack years | 270 | 196 | 115 | 58 | 0 |
| > 40 pack years | 223 | 140 | 85 | 41 | 0 |

— Packyears <= 40 Packyears > 40