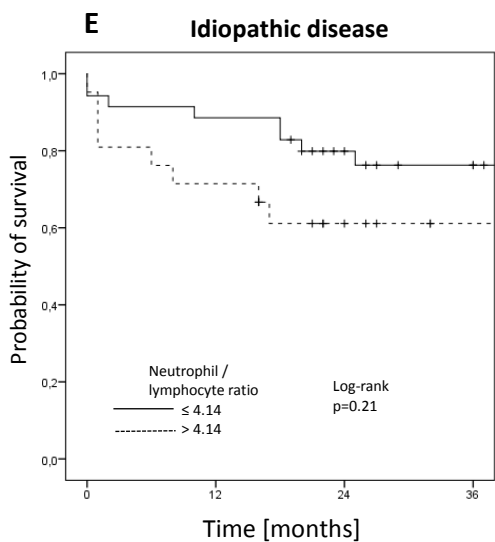
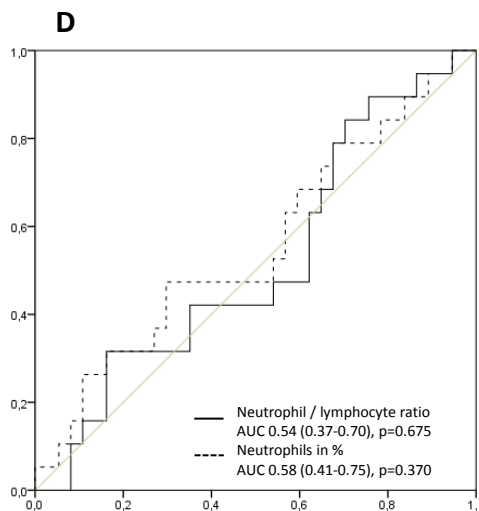
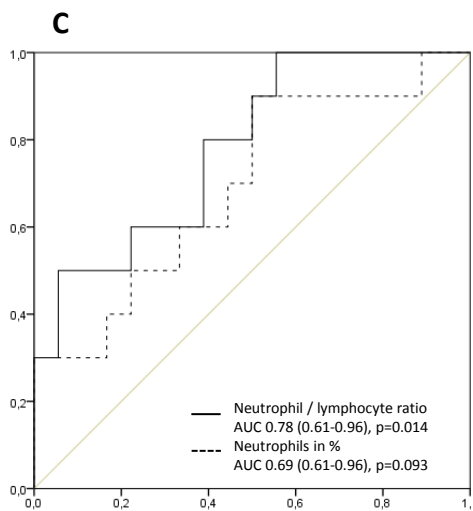
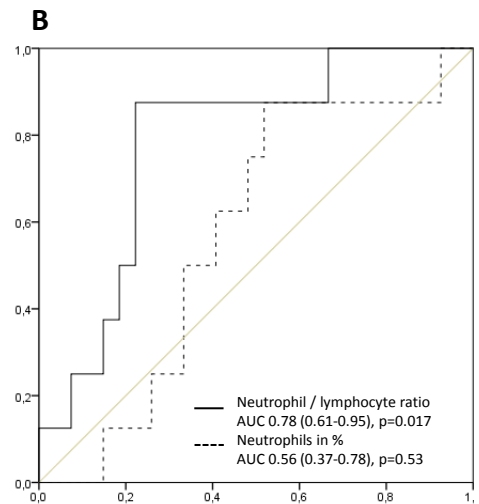
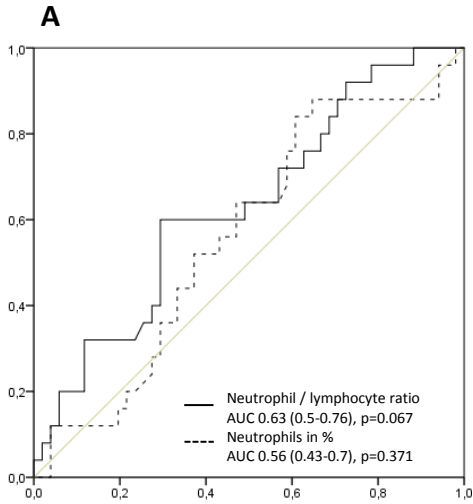


# Supplementary Figure 1



**Receiver operating characteristics (ROC) across transplantation-free survival and Kaplan-Meier survival curve in patients with idiopathic disease:** ROC analyses across the range of relative numbers of neutrophils and the neutrophil / lymphocyte ratio in all patients with PAH (A), in patients with incident PAH (B), in patients with PAH without cardiovascular risk factors (C) and in patients with idiopathic disease (D). Transplantation-free survival in patients with idiopathic disease (E).