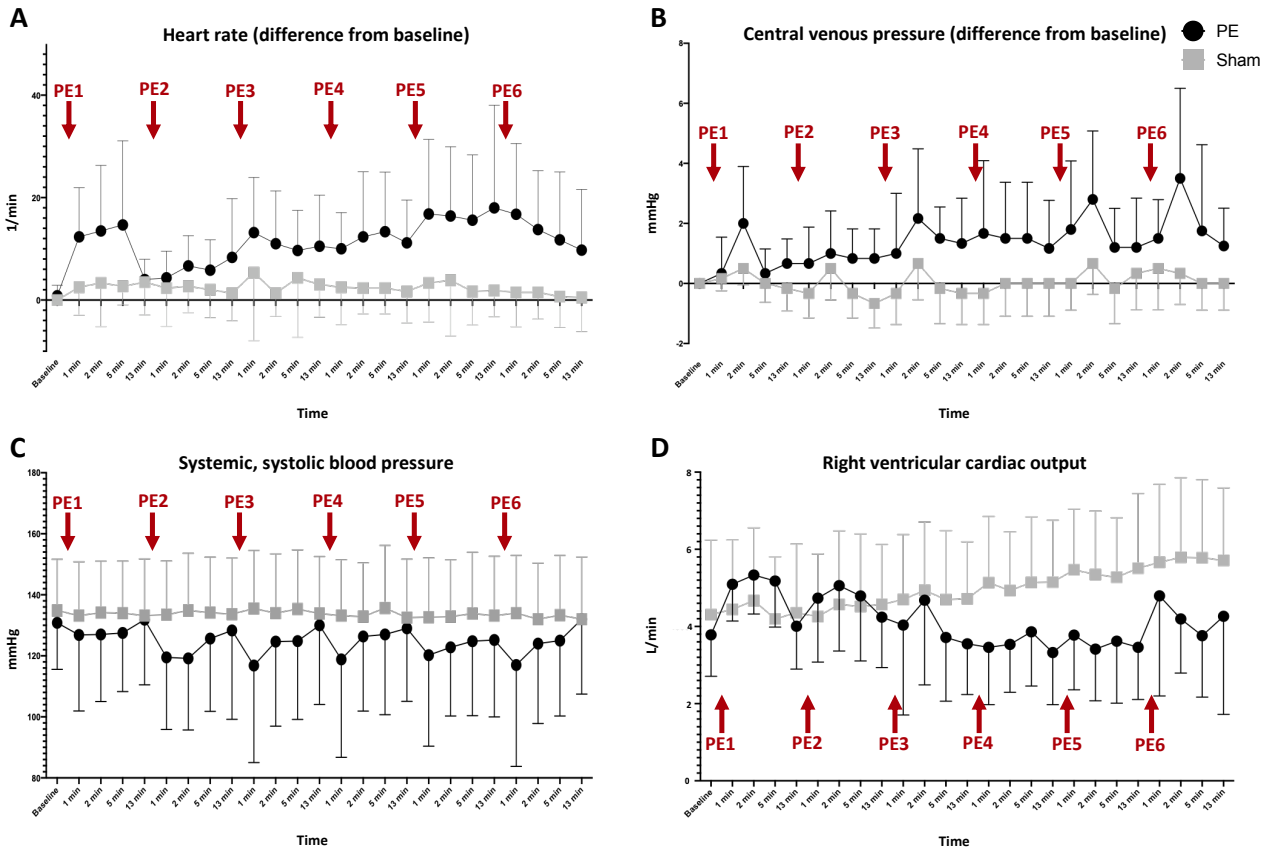


1 Supplementary figure 1:



2

3 Title: Systemic variables in consecutive pulmonary embolism

4 Caption: Consecutive, acute pulmonary embolisms increased heart rate (A), mostly at the first
5 embolism, and central venous pressure (B). Systolic, systemic blood pressure dropped transiently at
6 every embolism induced (C). The cardiac output (D) was initially compensated by increased heart
7 rate and stroke volume, but low output remained following the third pulmonary embolism. Please
8 compare the latter to Figure 2C on right ventricular stroke volume.

9