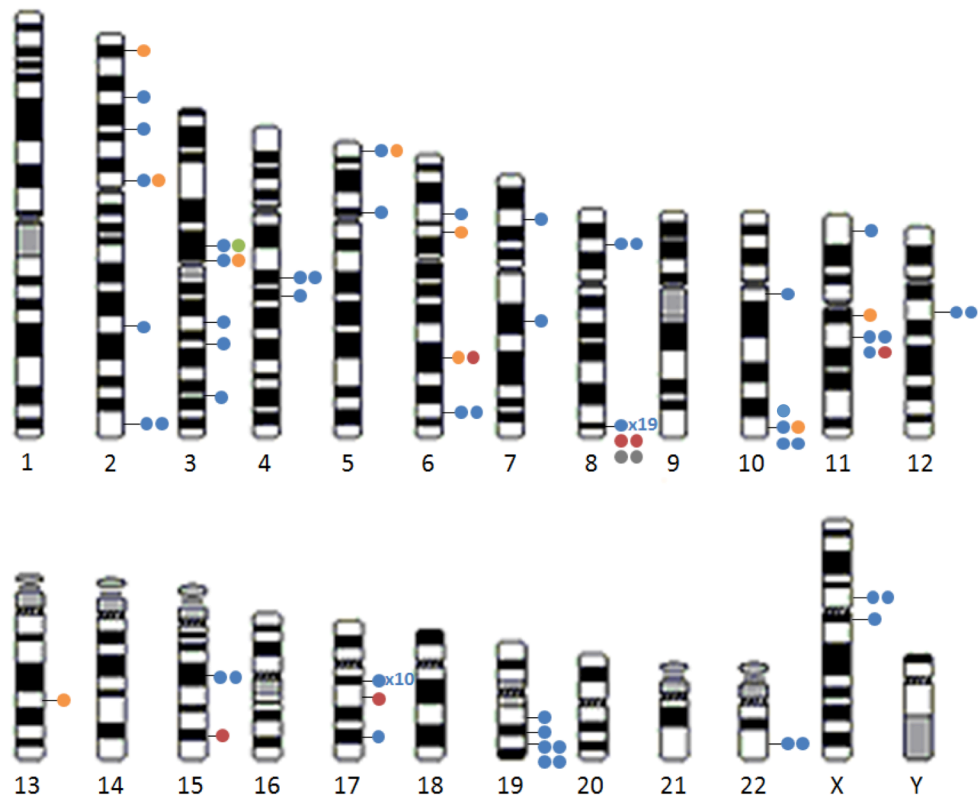


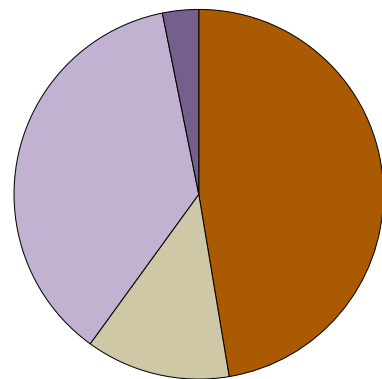
A.



## Discovery Population

● European; 77 (81%) ● East Asian; 9 (10%) ● African American; 6 (6%) ● Multi-ethnic; 2 (2%) ● Latin American; 1 (1%)

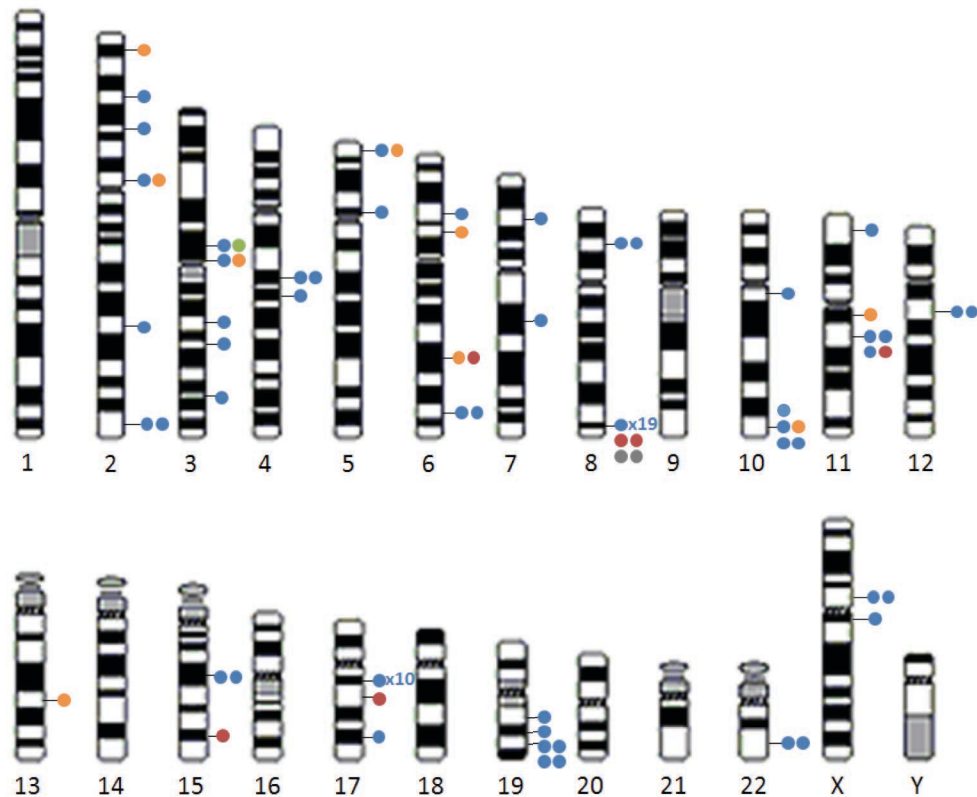
B.



## SNP classification

- ▲ Gene desert; 45 (47%)
- ▲ LD block of known gene; 12 (13%)
- ▲ Non-coding gene region; 35 (37%)
- ▲ Gene coding region; 3 (3%)

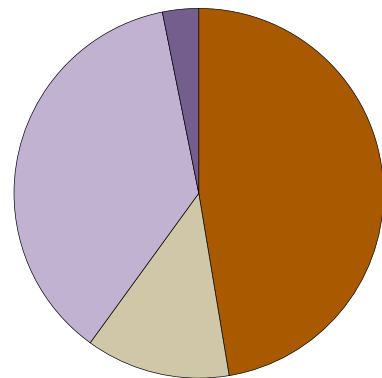
A.



#### Discovery Population

● European; 77 (81%) ● East Asian; 9 (10%) ● African American; 6 (6%) ● Multi-ethnic; 2 (2%) ● Latin American; 1 (1%)

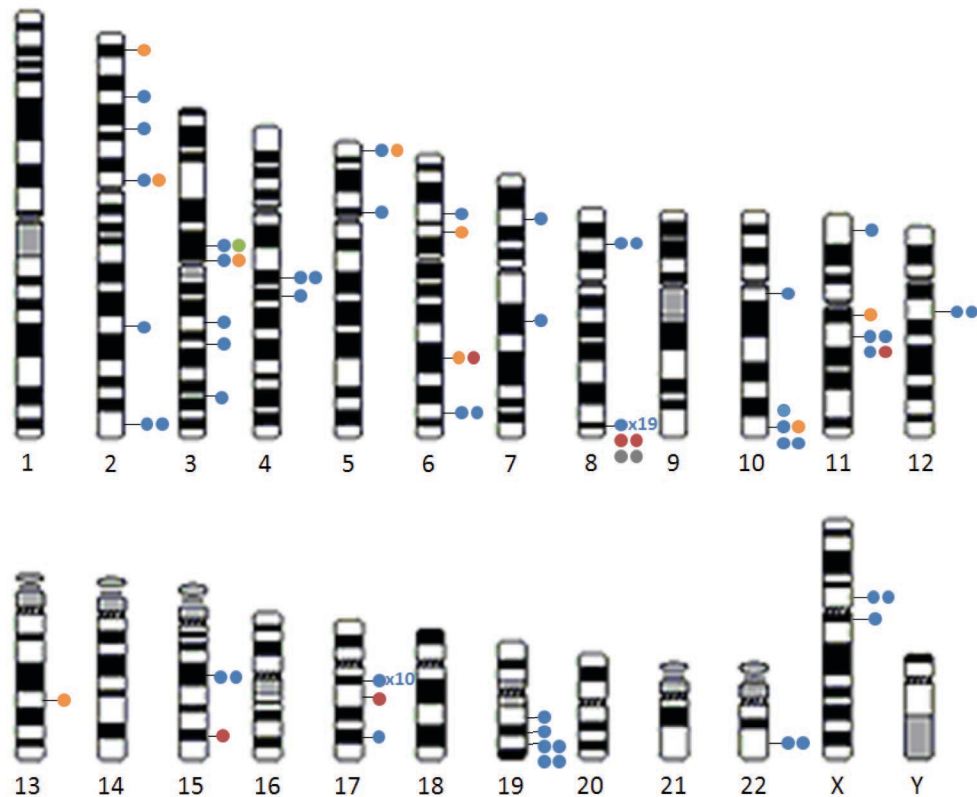
B.



#### SNP classification

- ▲ Gene desert; 45 (47%)
- ▲ LD block of known gene; 12 (13%)
- ▲ Non-coding gene region; 35 (37%)
- ▲ Gene coding region; 3 (3%)

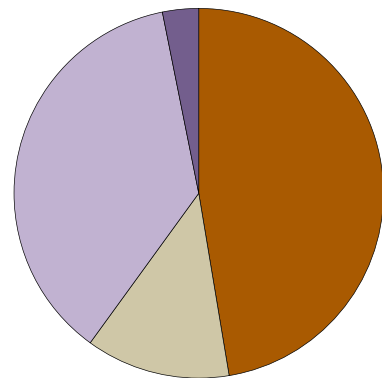
A.



#### Discovery Population

● European; 77 (81%) ● East Asian; 9 (10%) ● African American; 6 (6%) ● Multi-ethnic; 2 (2%) ● Latin American; 1 (1%)

B.



#### SNP classification

- ▲ Gene desert; 45 (47%)
- ▲ LD block of known gene; 12 (13%)
- ▲ Non-coding gene region; 35 (37%)
- ▲ Gene coding region; 3 (3%)