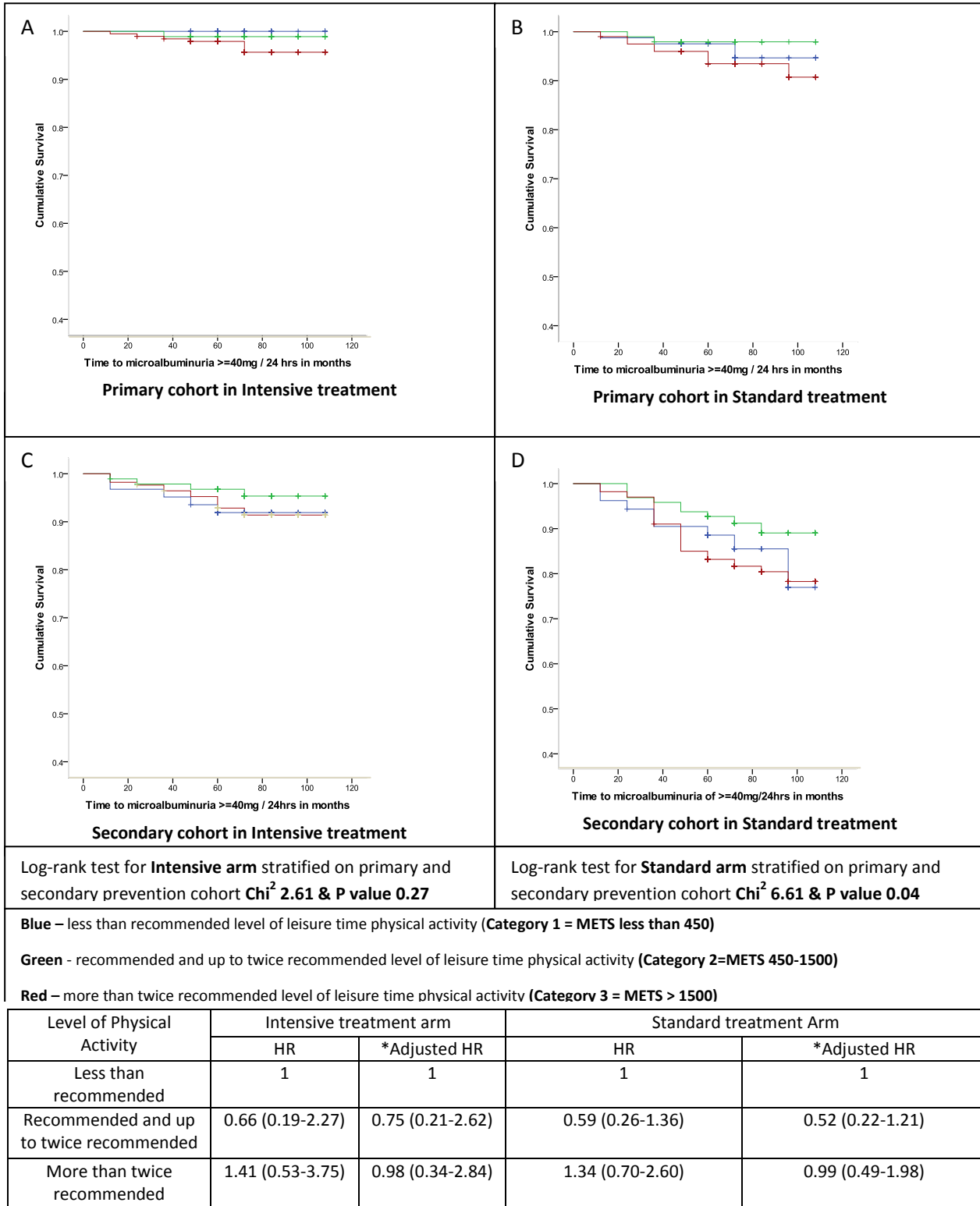


Appendix 1: Kaplan-Meier survival curves and hazard ratios for nephropathy (N=1365, sustained albuminuria $\geq 40\text{mg}/24\text{ hrs}$) in the DCCT dataset according to LPA (data is categorised according to Standard / Intensive treatment arm, and Primary / Secondary prevention cohort). Excludes patients with albuminuria $\geq 40\text{mg}/24\text{ hrs}$ at baseline



*Adjusted for age, gender, duration of diabetes, HbA1c and occupational activity