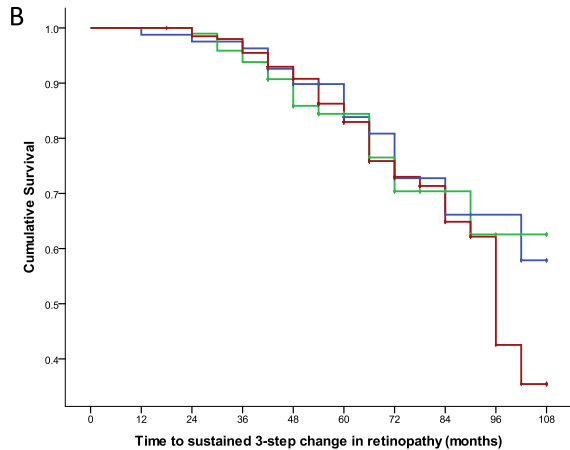
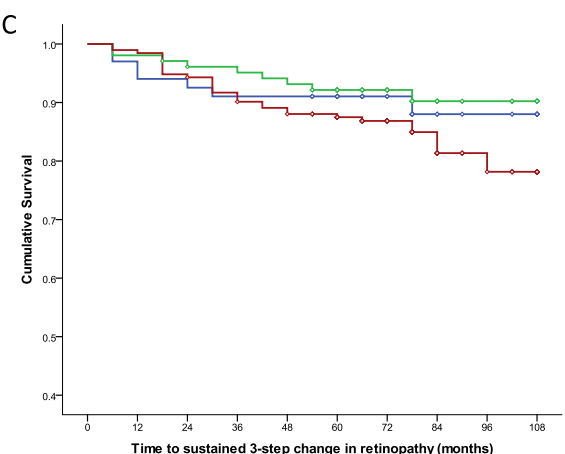


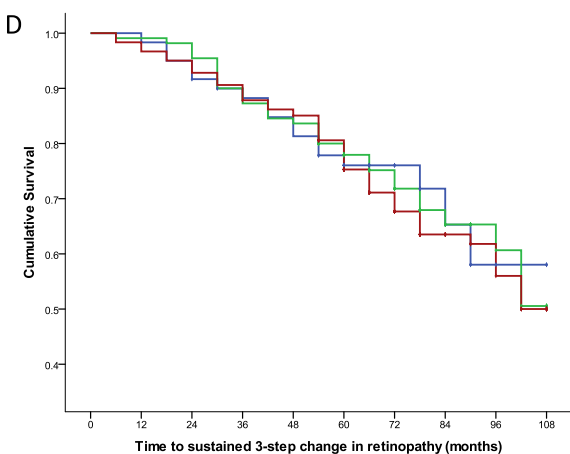
Primary cohort in Intensive treatment



Primary cohort in Standard treatment



Secondary cohort in Intensive treatment



Secondary cohort in Standard treatment

Log-rank test for Intensive arm stratified on primary and secondary prevention cohort χ^2 3.14 & P value 0.21

Log-rank test for Standard arm stratified on primary and secondary prevention cohort χ^2 0.93 & P value 0.63

Blue – less than recommended level of leisure time physical activity (Category 1 = METS less than 450)

Green - recommended and up to twice recommended level of leisure time physical activity (Category 2=METS 450-1500)

Red – more than twice recommended level of leisure time physical activity (Category 3 = METS > 1500)

Level of Physical Activity	Intensive treatment arm		Standard treatment Arm	
	HR	*Adjusted HR	HR	*Adjusted HR
Less than recommended	1	1	1	1
Recommended and up to twice recommended	0.77 (0.35-1.73)	0.93 (0.41-2.09)	1.08 (0.70-1.67)	1.13 (0.73-1.77)
More than twice recommended	1.29 (0.66-2.49)	1.29 (0.64-2.58)	1.18 (0.80-1.74)	1.11 (0.74-1.68)