

Paired T-Test and CI: zno+Ag_strept_T1, zno+Ag_strepto_T2

Descriptive Statistics

Sample	N	Mean	StDev	SE Mean
zno+Ag_strept_T1	12	45.33	5.26	1.52
zno+Ag_strepto_T2	12	43.29	5.32	1.54

Estimation for Paired Difference

95% CI for			
Mean	StDev	SE Mean	$\mu_{\text{difference}}$
2.04	3.87	1.12	(-0.42, 4.50)

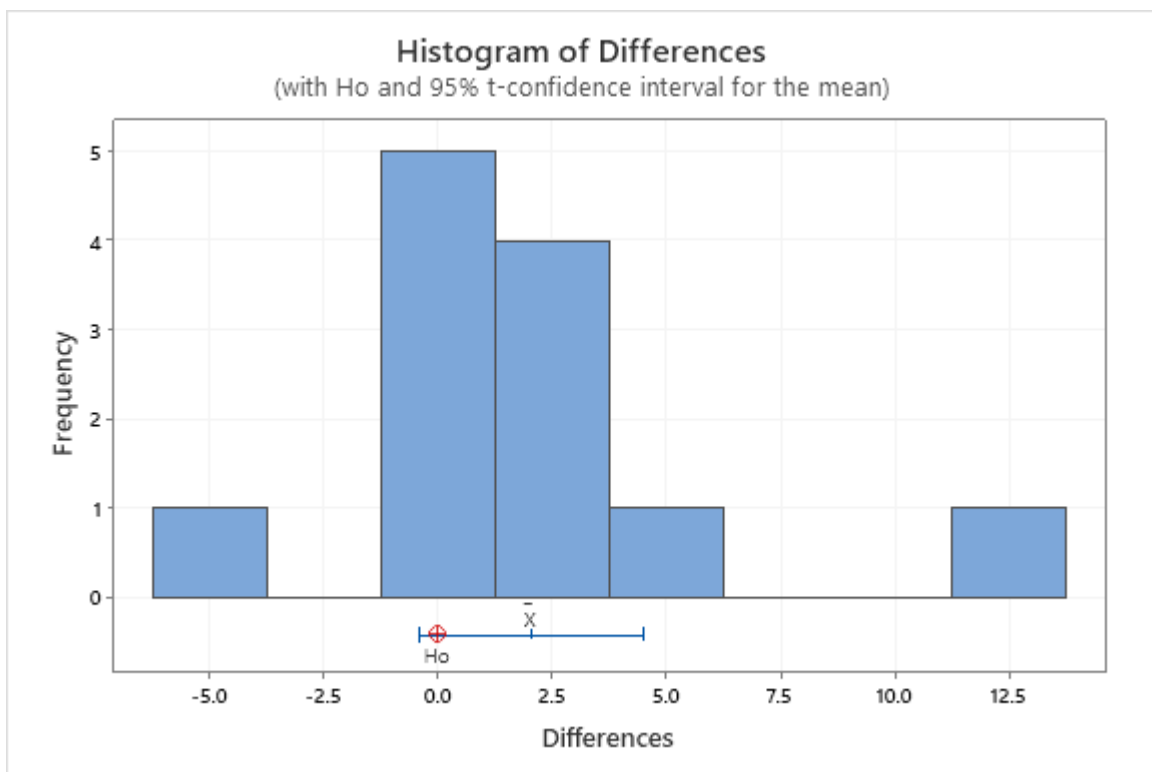
$\mu_{\text{difference}}$: population mean of (zno+Ag_strept_T1 - zno+Ag_strepto_T2)

Test

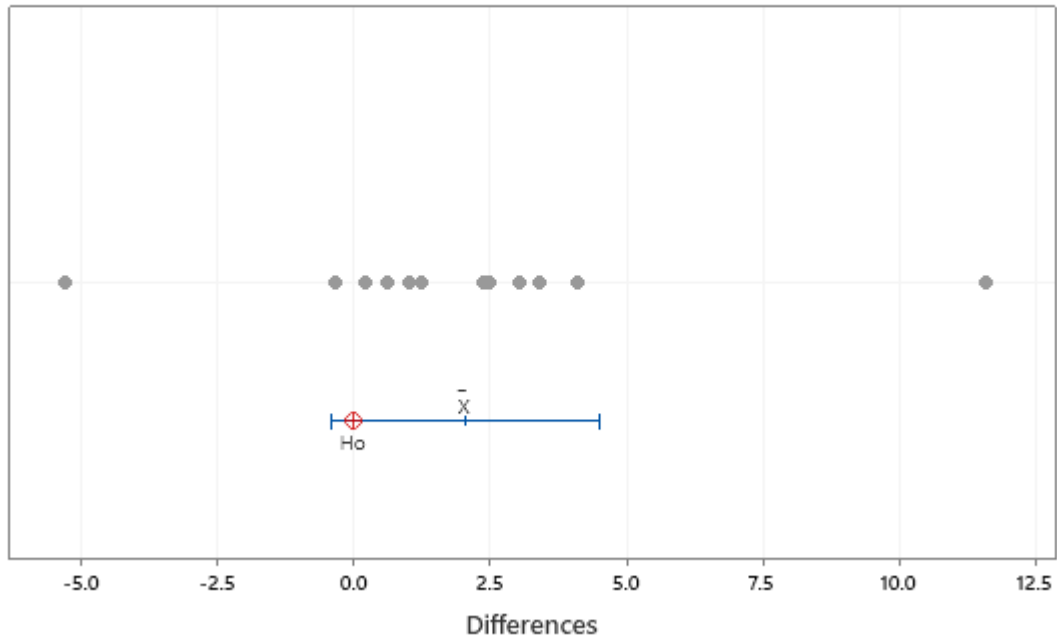
Null hypothesis $H_0: \mu_{\text{difference}} = 0$

Alternative hypothesis $H_1: \mu_{\text{difference}} \neq 0$

T-Value	P-Value
1.82	0.095



Individual Value Plot of Differences
(with H_0 and 95% t-confidence interval for the mean)



Boxplot of Differences
(with H_0 and 95% t-confidence interval for the mean)

