

## Paired T-Test and CI: zno+Ag\_strept\_T1, zno+Ag\_strepto\_T2

### Descriptive Statistics

Sample	N	Mean	StDev	SE Mean
zno+Ag_strept_T1	12	7675000	738376	213151
zno+Ag_strepto_T2	12	7520000	705717	203723

### Estimation for Paired Difference

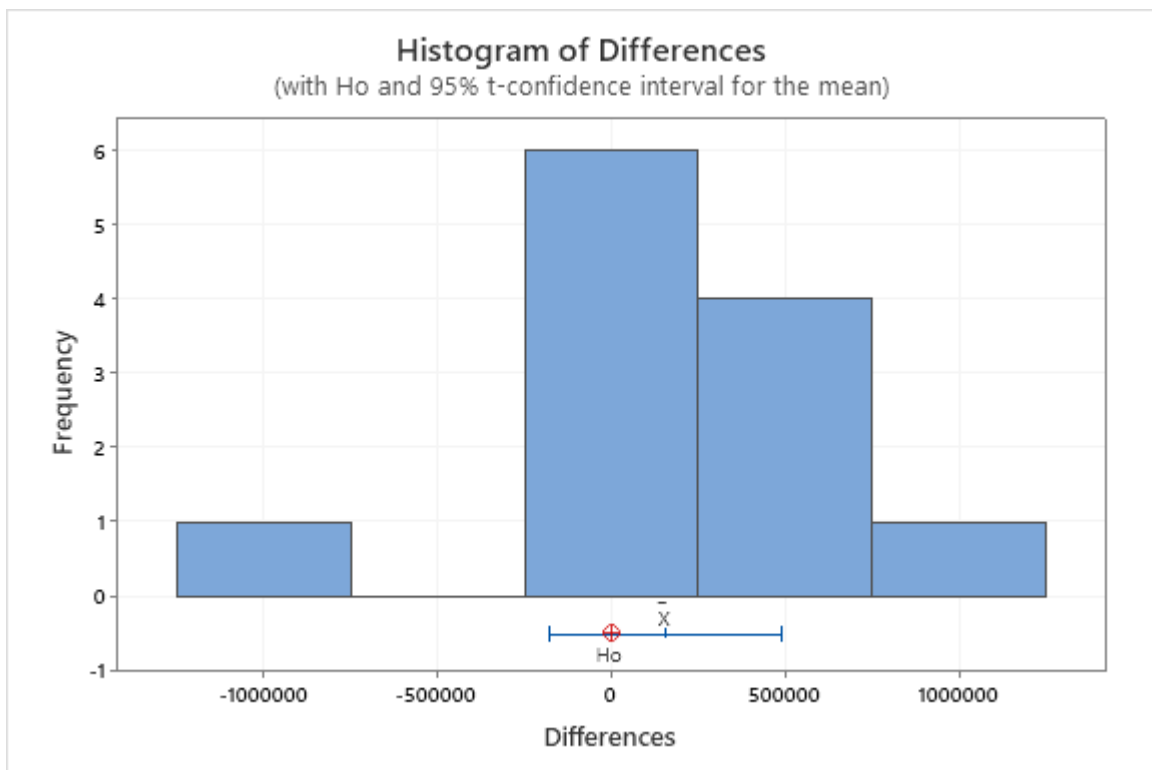
Mean	StDev	SE Mean	95% CI for $\mu_{\text{difference}}$
155000	528771	152643	(-180965, 490965)

$\mu_{\text{difference}}$ : population mean of (zno+Ag\_strept\_T1 - zno+Ag\_strepto\_T2)

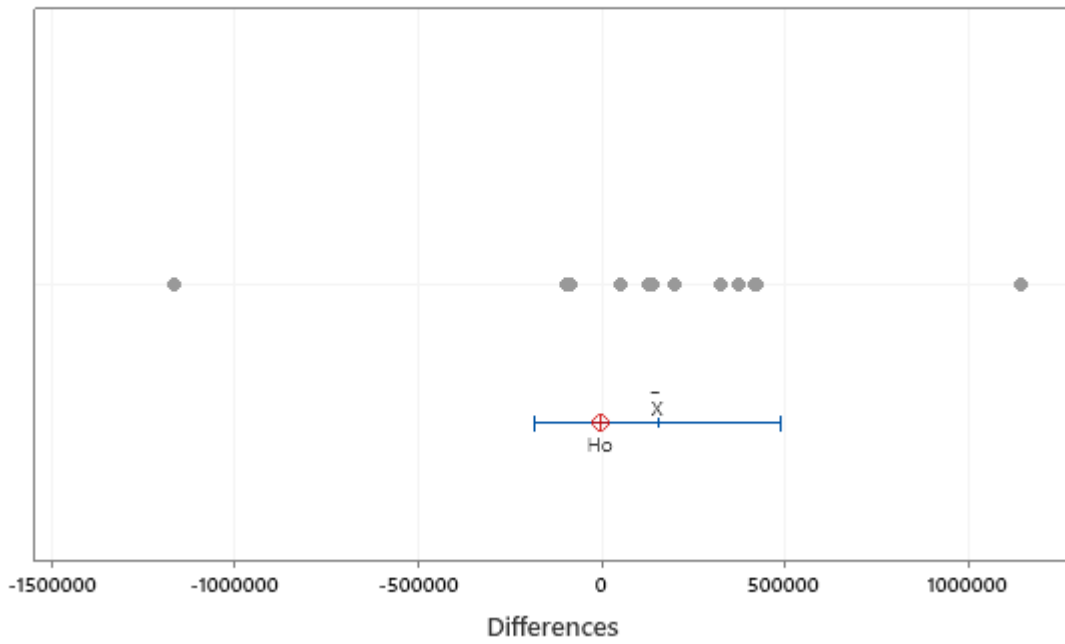
### Test

Null hypothesis  $H_0: \mu_{\text{difference}} = 0$   
 Alternative hypothesis  $H_1: \mu_{\text{difference}} \neq 0$

T-Value	P-Value
1.02	0.332



**Individual Value Plot of Differences**  
(with  $H_0$  and 95% t-confidence interval for the mean)



**Boxplot of Differences**  
(with  $H_0$  and 95% t-confidence interval for the mean)

