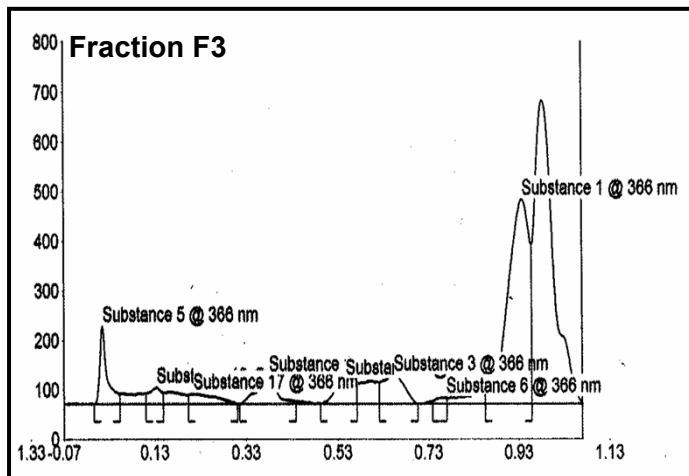
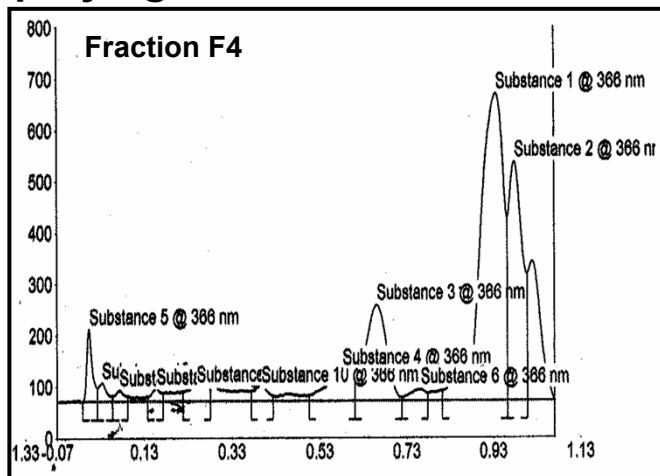


## Before spraying

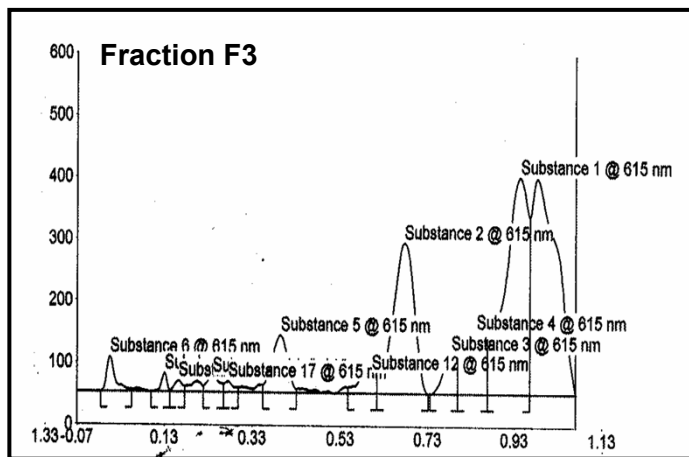


Rf Value	Assigned Substance	Area %
0.00	Substance 5	02.66
0.03	Substance 8	01.11
0.06	Substance 10	00.72
0.14	Substance 12	00.85
0.23	Substance 11	02.01
0.37	Substance 7	01.40
0.54	Substance 4	05.16
0.62	Substance 3	13.58
0.71	Substance 6	01.29
0.87	Substance 1	48.53
0.91	Substance 2	22.69

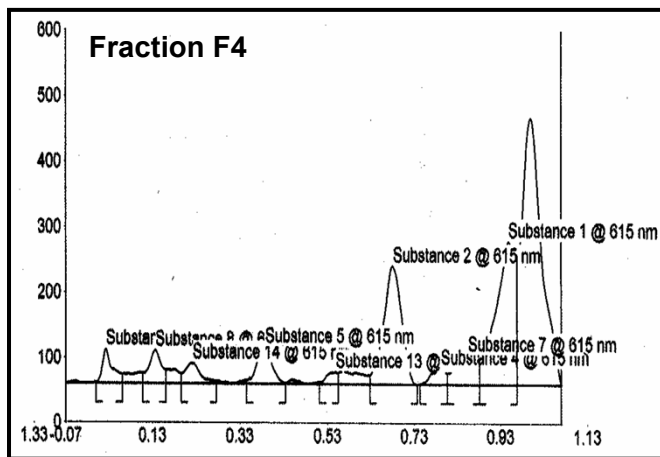


Rf Value	Assigned Substance	Area %
0.01	Substance 5	07.96
0.12	Substance 9	02.91
0.20	Substance 13	03.95
0.35	Substance 7	07.43
0.51	Substance 4	06.69
0.61	Substance 3	08.79
0.72	Substance 6	00.96
0.88	Substance 1	61.31

## After spraying anisaldehyde sulphuric acid reagent



Rf Value	Assigned Substance	Area %
0.00	Substance 6	02.44
0.12	Substance 8	00.83
0.15	Substance 9	00.75
0.22	Substance 12	01.63
0.25	Substance 13	00.83
0.36	Substance 5	07.22
0.56	Substance 10	02.86
0.63	Substance 2	26.16
0.73	Substance 3	04.37
0.79	Substance 4	11.13
0.88	Substance 1	41.78



Rf Value	Assigned Substance	Area %
0.02	Substance 6	04.56
0.12	Substance 8	05.39
0.20	Substance 12	04.21
0.36	Substance 5	07.16
0.51	Substance 11	01.80
0.63	Substance 2	27.84
0.74	Substance 4	03.02
0.81	Substance 7	08.68
0.89	Substance 1	37.33