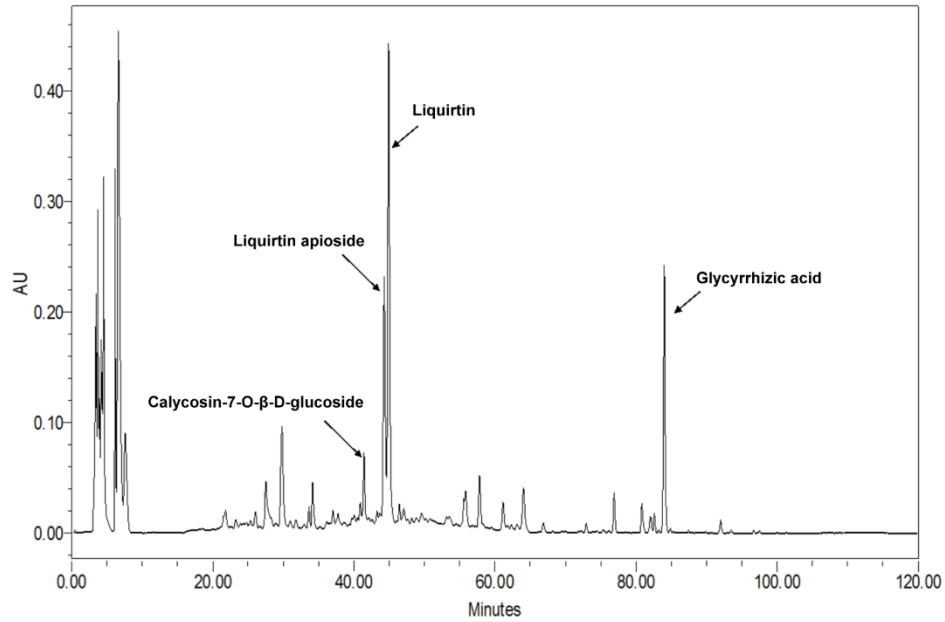
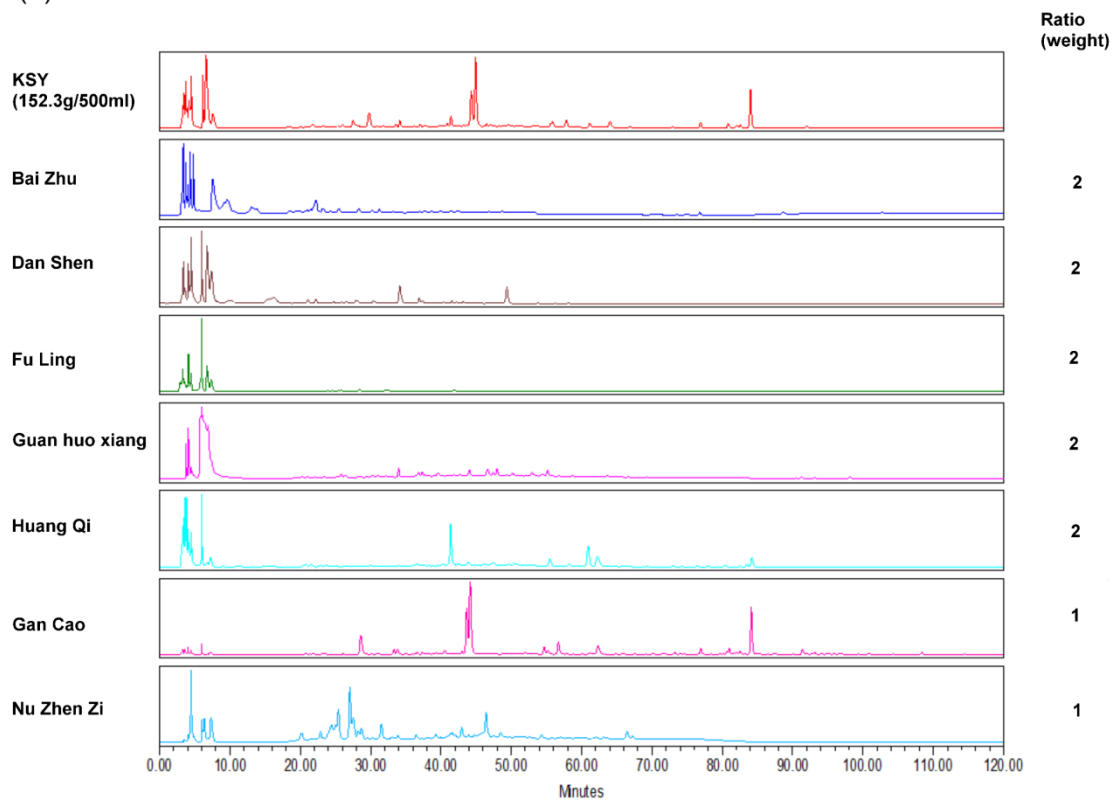


Additional file 3: Supplemental figure S1

(a)



(b)



Supplemental figure 1. HPLC analysis of extracts from KSY and its constituted herbs

(a) The HPLC profile of KSY. Standard compounds (calycosin-7-O- β -D-glucoside, glycyrrhizic acid, liquiritin, liquiritinapioside) identified in KSY were marked. (b)

Comparison of HPLC profiles between each herbal extract and KSY.