

SUPPLEMENTARY FILE 1

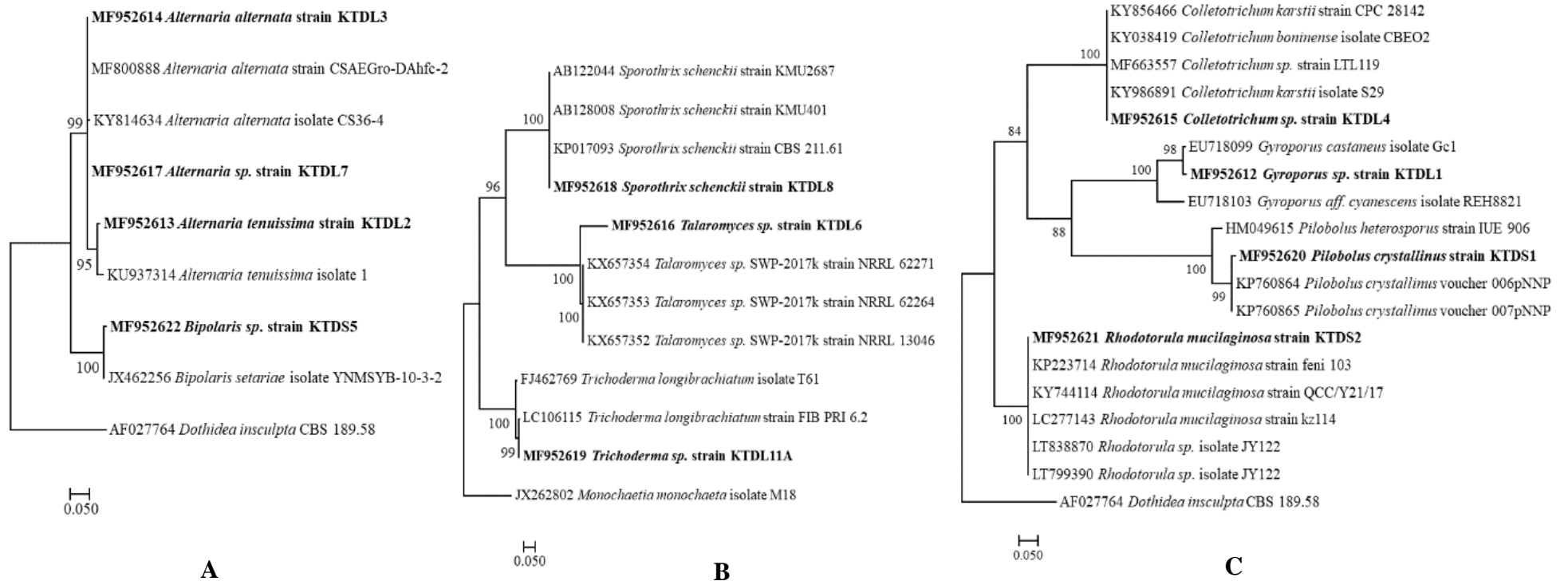


Figure S1-1: Phylogenetic relationships of fungal endophytes from healthy leaves, stems and seeds of *D. stramonium* inferred based on ITS1 and ITS4 sequences. The numbers at branch nodes represent maximum likelihood bootstrap values from analyses with 1000 replicates. In boldface are fungal endophytes isolated from *D. stramonium* (GenBank accession number, name and isolate code). Fungal endophytes according to morphological characteristics on PDA plates, where group **A** are filamentous fungi, **B** and **C** being non-filamentous fungi. Evolutionary analyses were conducted in MEGA7 (Kumar et al., 2016).