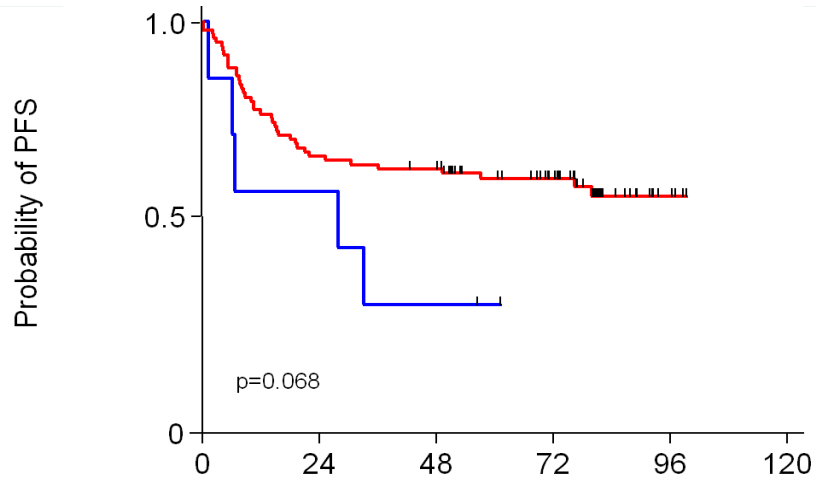
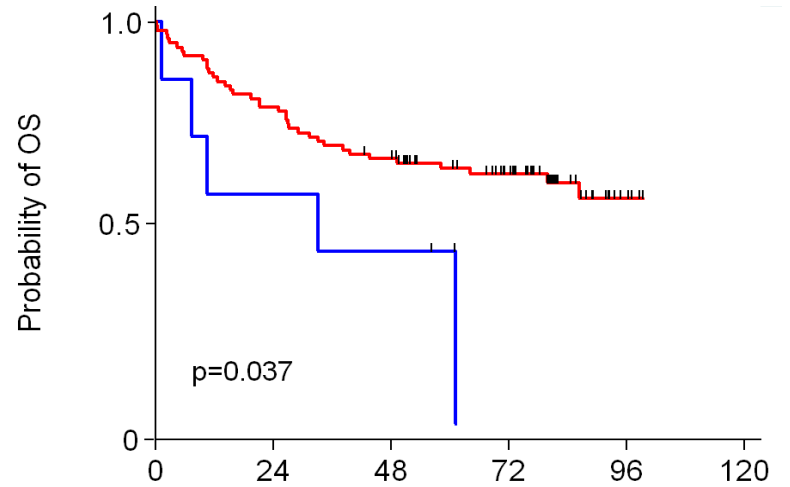
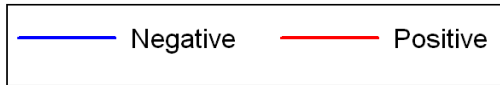


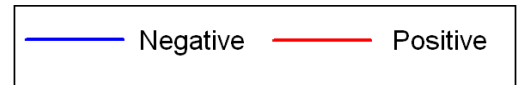
EBER



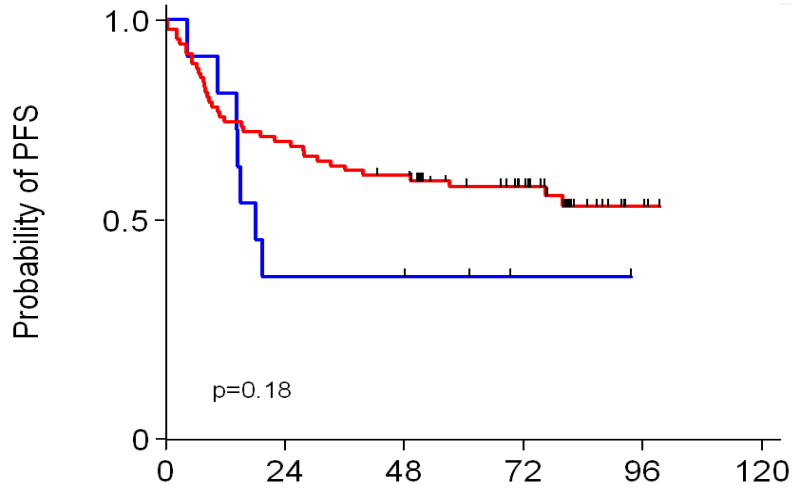
Patients at risk
 Negative 7 4 2 0 0 0
 Positive 94 62 58 37 4 0



Patients at risk
 Negative 7 4 3 0 0 0
 Positive 94 74 61 39 4 0

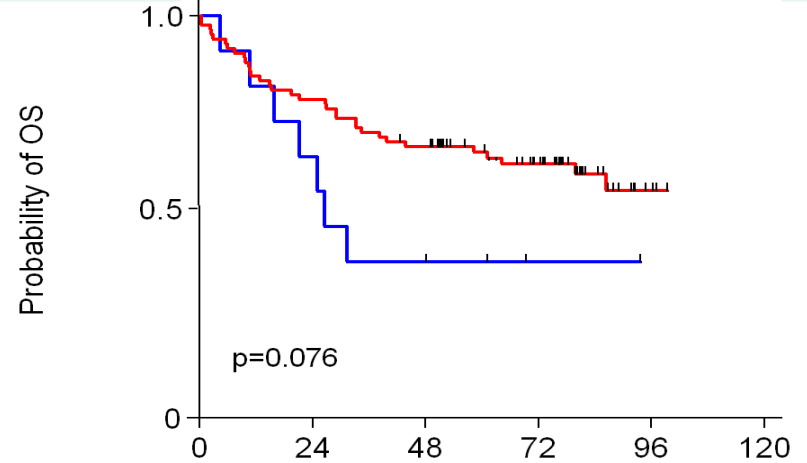
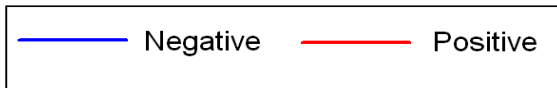


p63



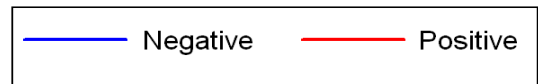
Patients at risk

	0	24	48	72	96	120
Negative	11	4	4	1	0	0
Positive	83	58	50	32	3	0

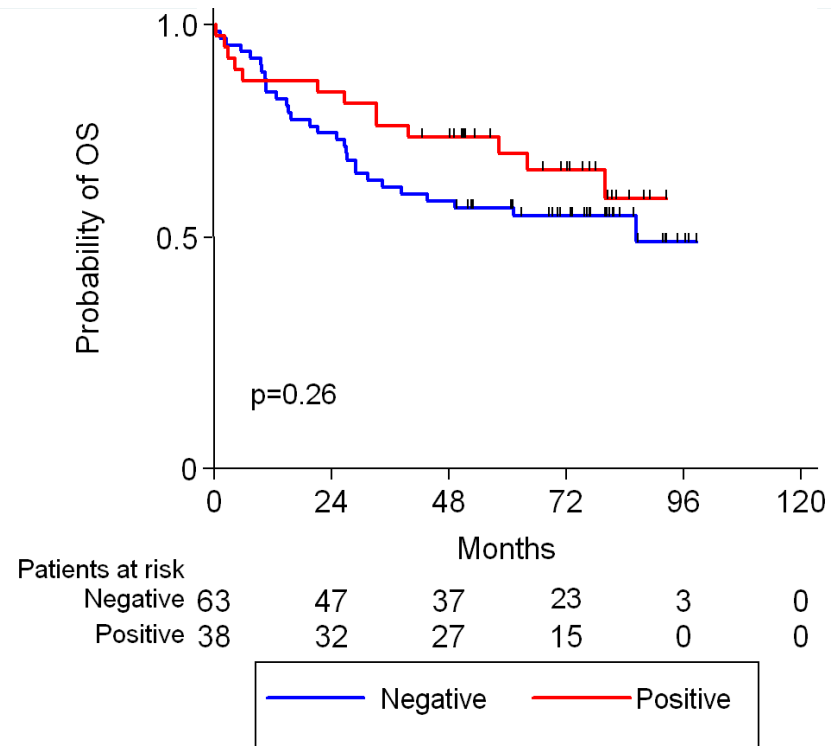
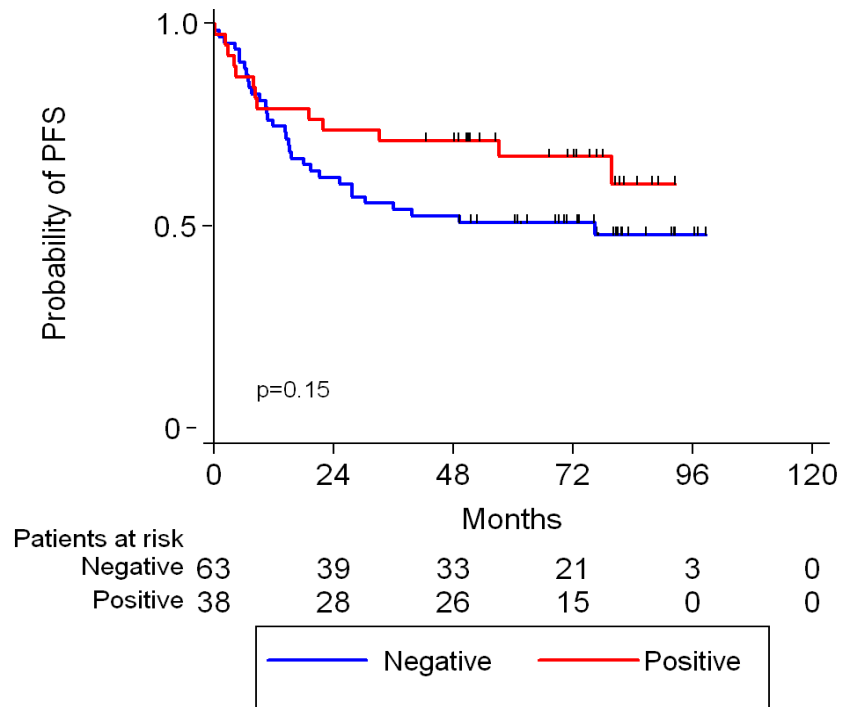


Patients at risk

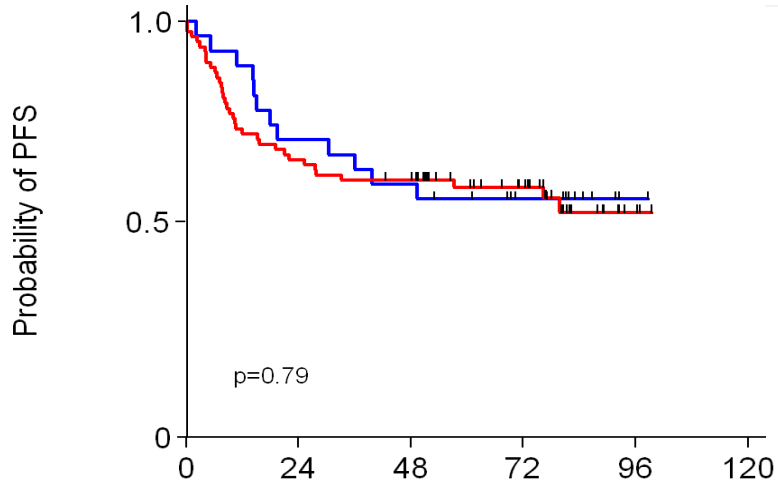
	0	24	48	72	96	120
Negative	11	7	4	1	0	0
Positive	83	65	54	34	3	0



mTOR

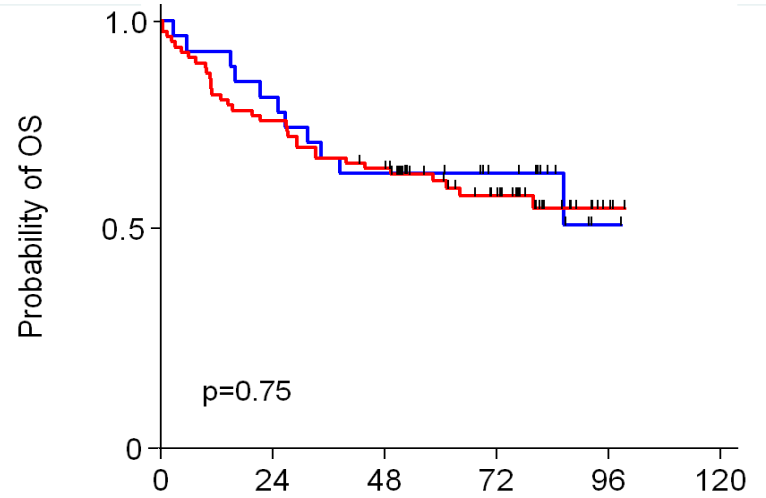
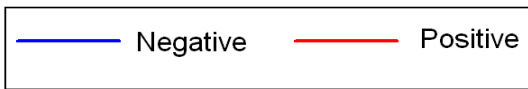


ERCC1



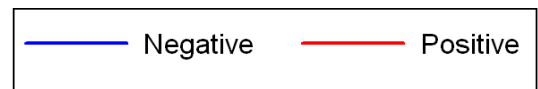
Patients at risk

	0	24	48	72	96	120
Negative	27	19	16	10	1	0
Positive	78	51	46	28	3	0



Patients at risk

	0	24	48	72	96	120
Negative	27	22	17	11	1	0
Positive	78	59	49	29	3	0



Cyclin D1

all patients, irrespective of treatment Groups

