

Bivariate analysis - Weisse Liste

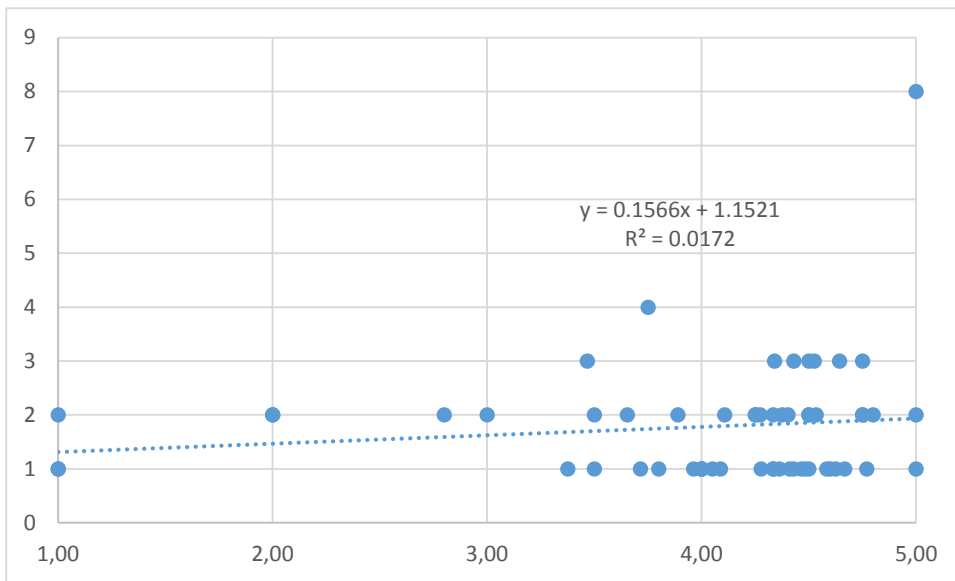


Figure 1: Number of physicians per practice and online rating Weisse Liste (Indicator 1)

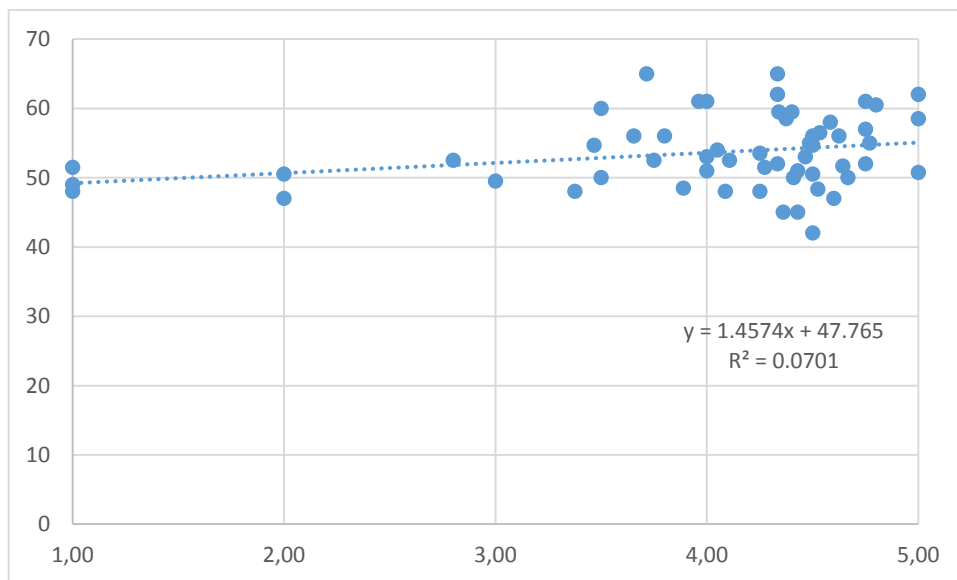


Figure 2: Age of the physicians per practice (average) and online rating Weisse Liste (Indicator 2)

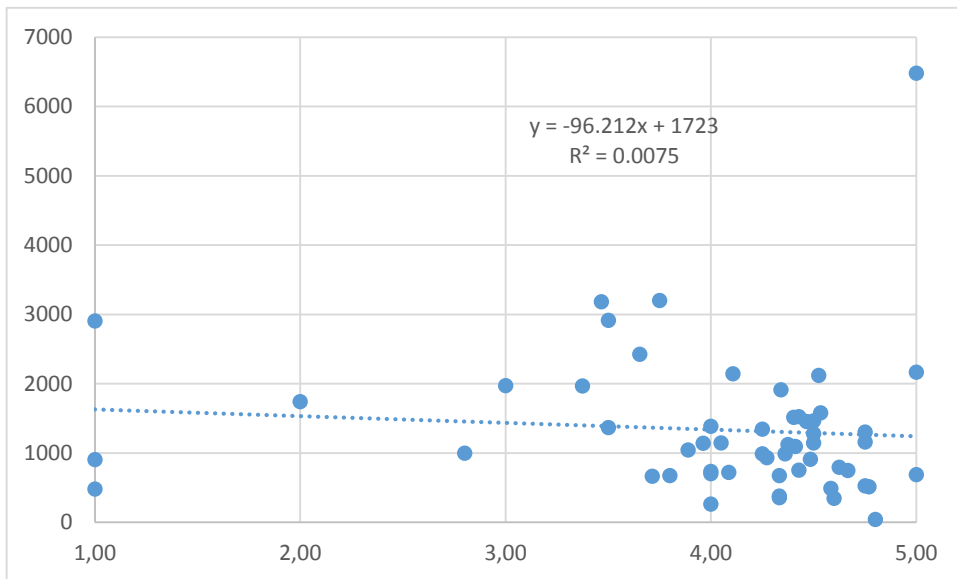


Figure 3: Patients per practice per quarter (average) and online rating Weisse Liste (Indicator 3)

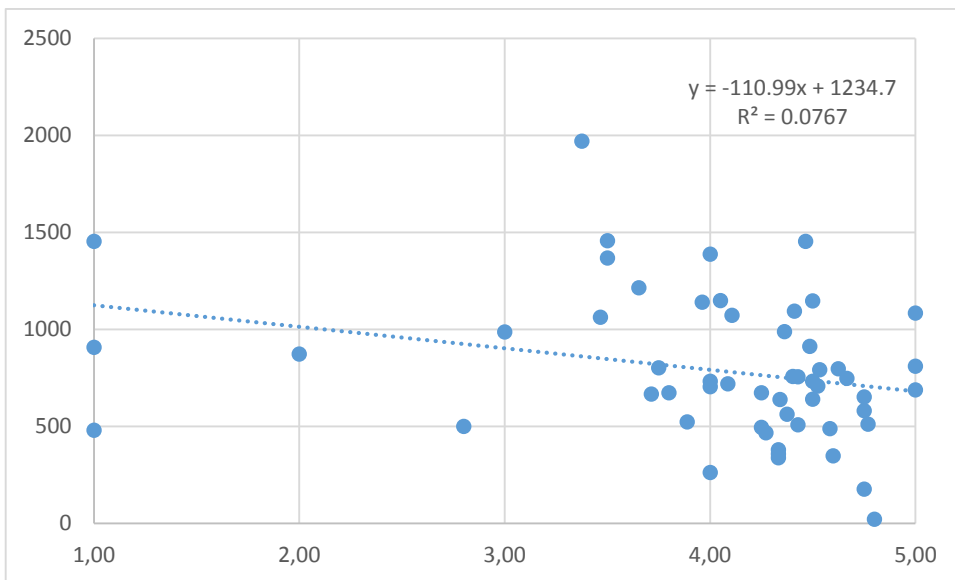


Figure 4: Patients per doctor ratio and online rating Weisse Liste (Indicator 4)

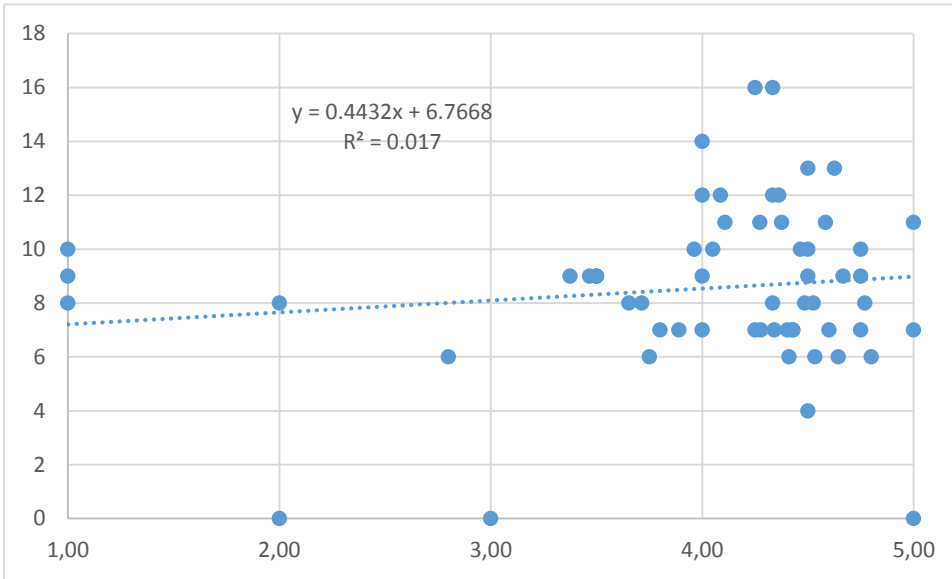


Figure 5: Quality circle visits (values practice-related) and online rating Weisse Liste (Indicator 5)

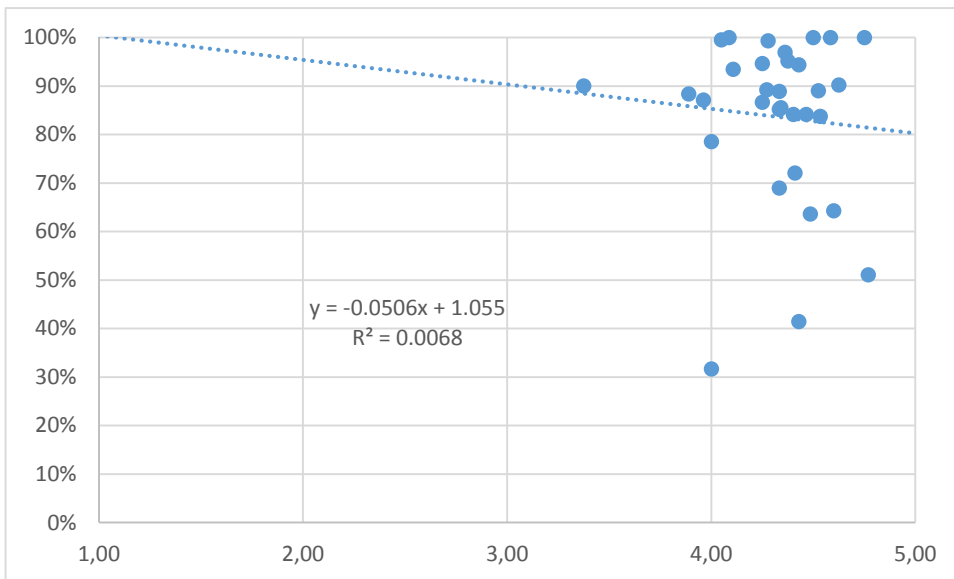


Figure 6: Chronically ill QuE-patients (Q4/2012) (in percentage) and online rating Weisse Liste (Indicator 6)

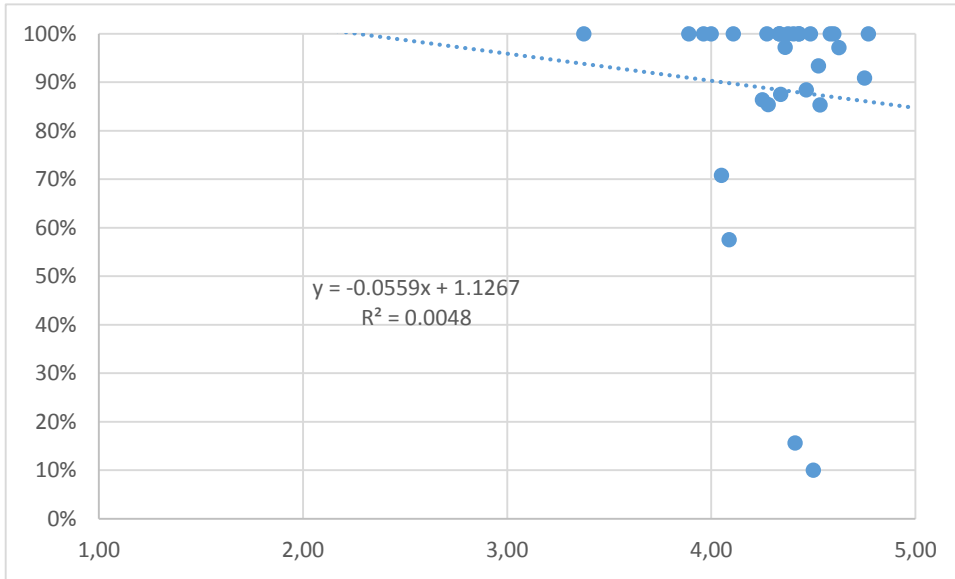


Figure 9: Patients who have been prescribed antiplatelet agents (in percentage) and online rating Weisse Liste (Indicator 9)

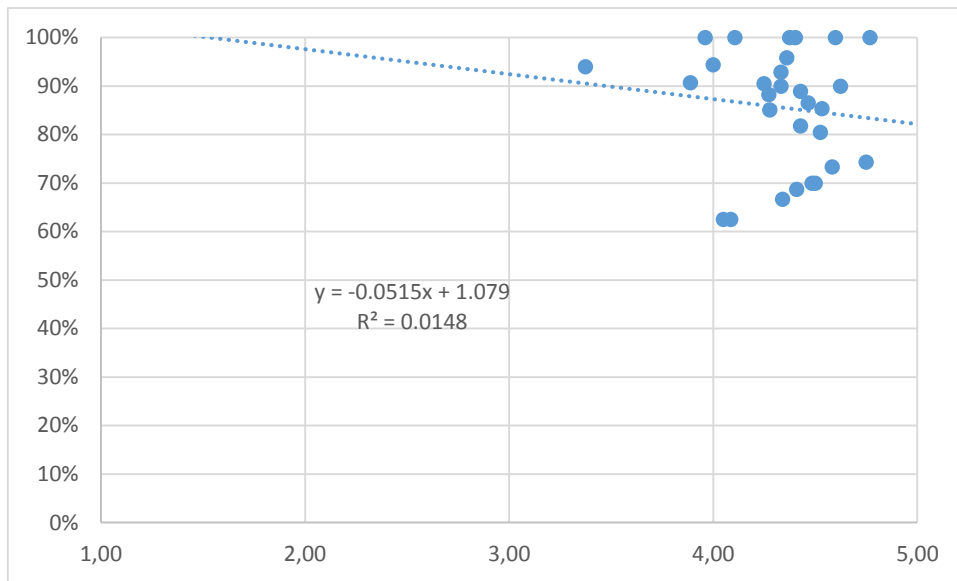


Figure 10: Patients who have been prescribed beta-blockers (in percentage) and online rating Weisse Liste (Indicator 10)

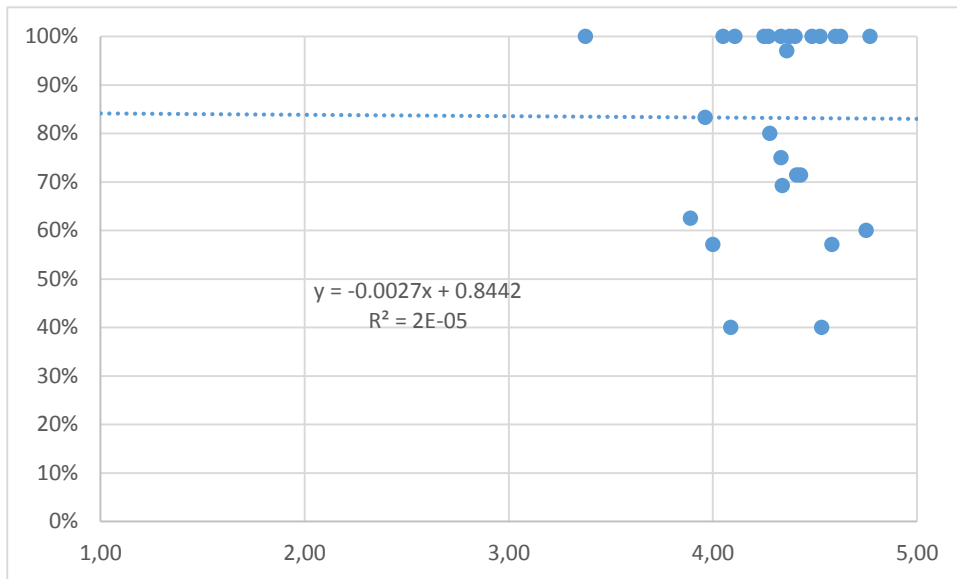


Figure 13: Patients with long-term medication who have been prescribed inhaled corticosteroids (in percentage) and online rating Weisse Liste (Indicator 13)

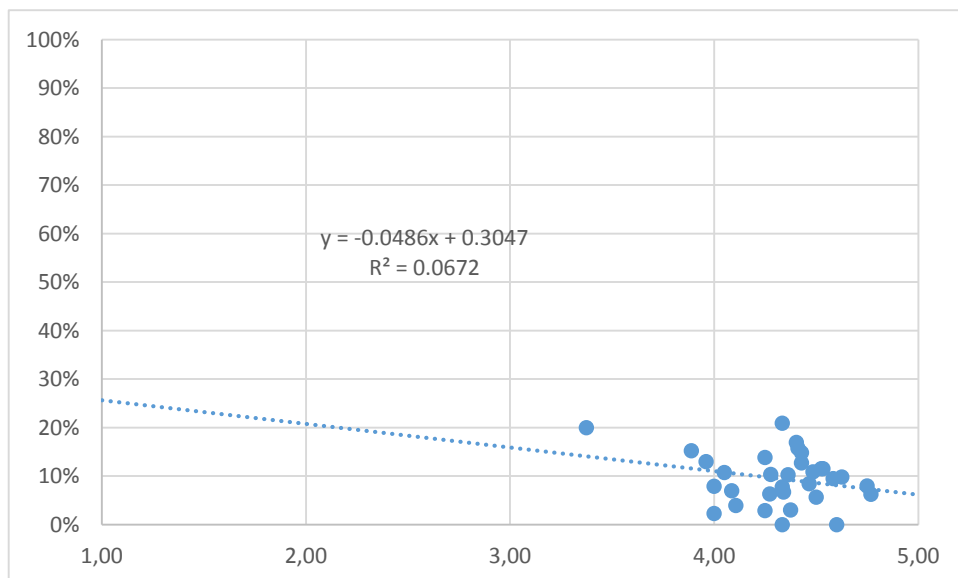


Figure 14: Polypharmacy: Patients aged 65 years or older with more than eight prescribed medications (Q4/2012) (in percentage) and online rating Weisse Liste (Indicator 14)

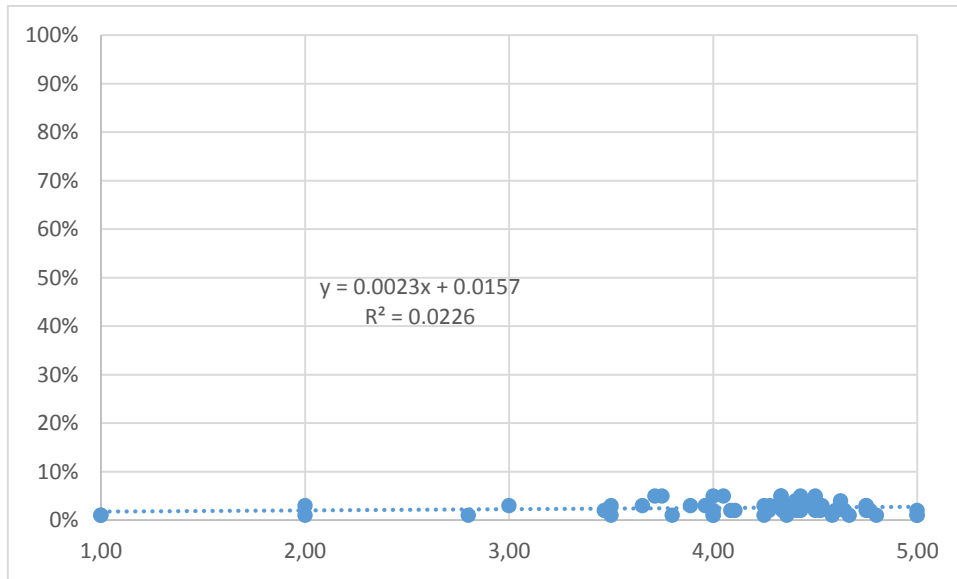


Figure 15: PRISCUS medication (2011) (in percentage) and online rating Weisse Liste (Indicator 15)

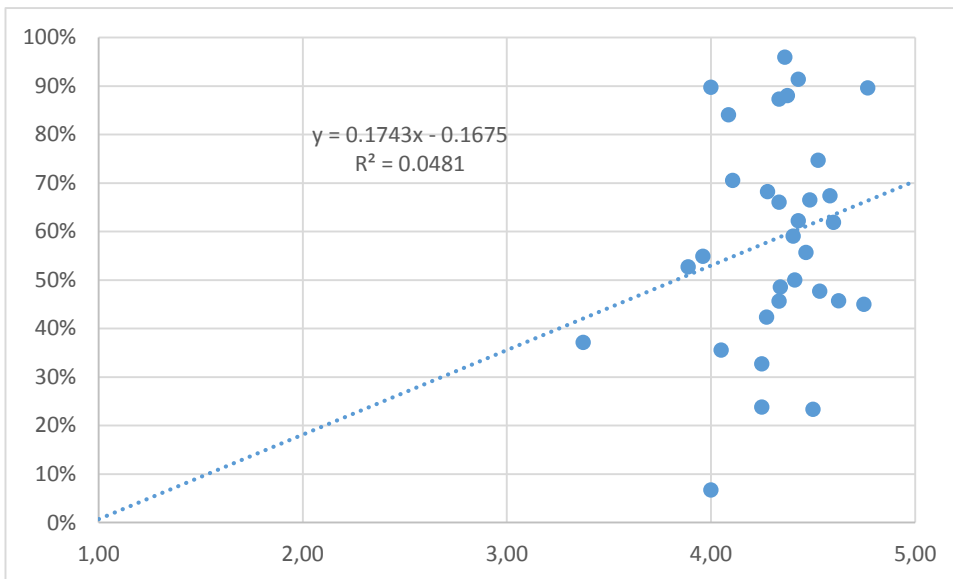


Figure 16: Patients aged 35 or older with a general preventive examination (in percentage) and online rating Weisse Liste (Indicator 16)

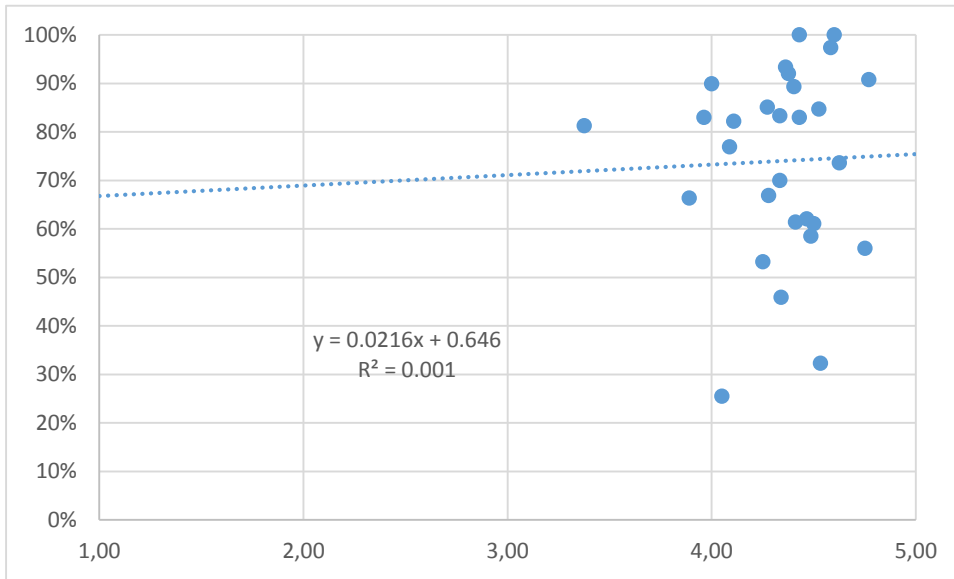


Figure 17: Patients who reached individual HbA1c-target values (in percentage) and online rating Weisse Liste (Indicator 17)

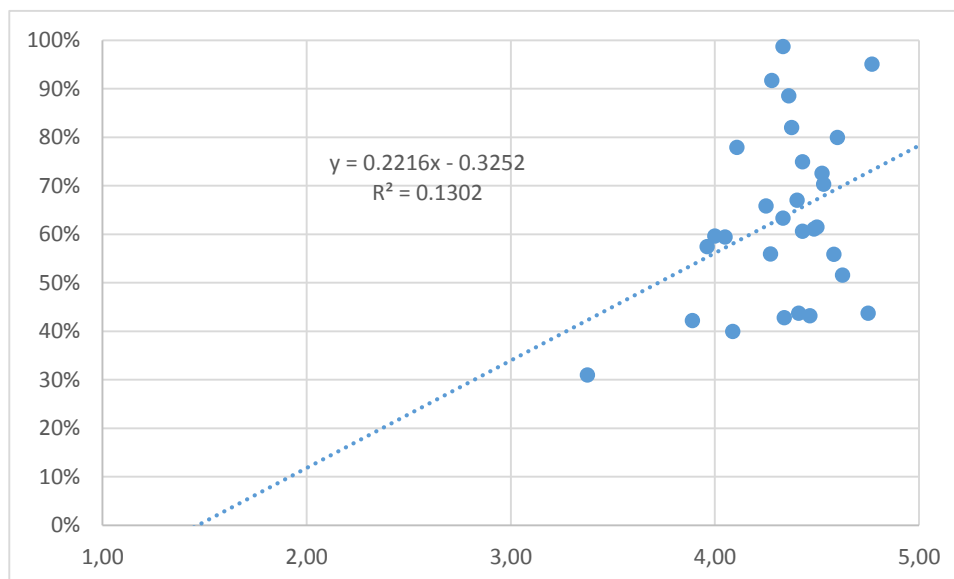


Figure 18: Patients with hypertension who show a normotensive blood pressure (in percentage) and online rating Weisse Liste (Indicator 18)

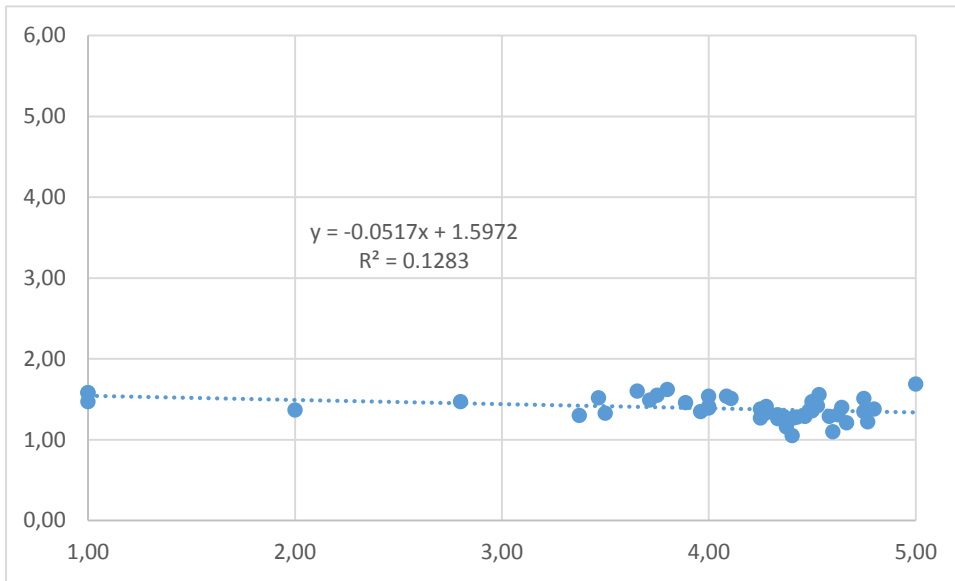


Figure 19: Offline patient survey 2012 (practice-related) and online rating Weisse Liste (Indicator 19)

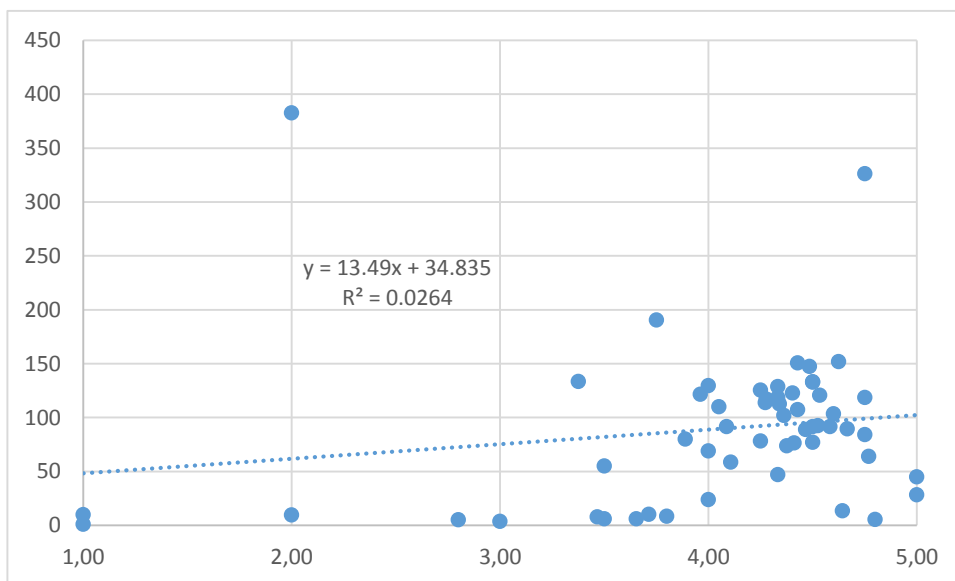


Figure 20: Cost per case (average 2012) and online rating Weisse Liste (Indicator 20)

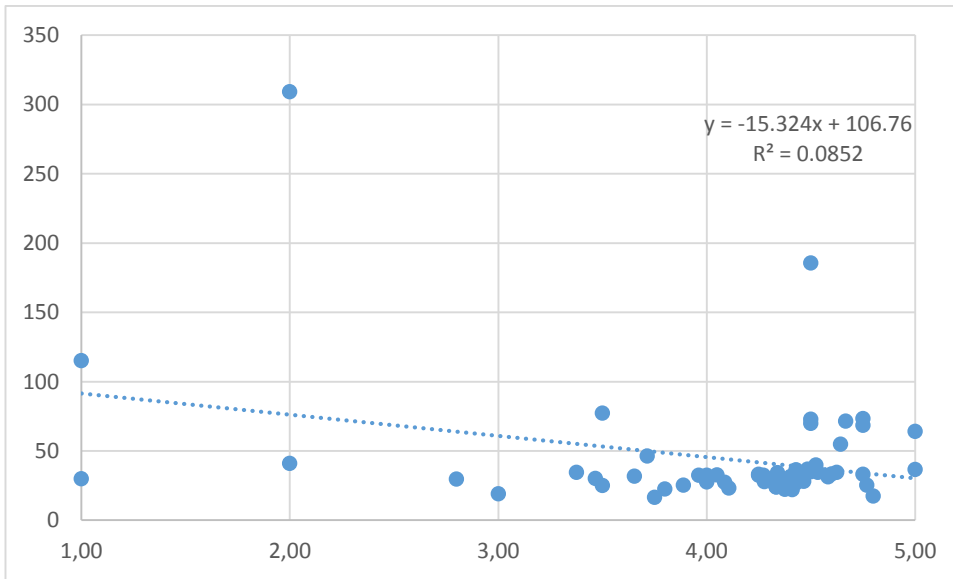


Figure 21: Cost per prescription (average 2012) and online rating Weisse Liste (Indicator 21)

Bivariate analysis – jameda

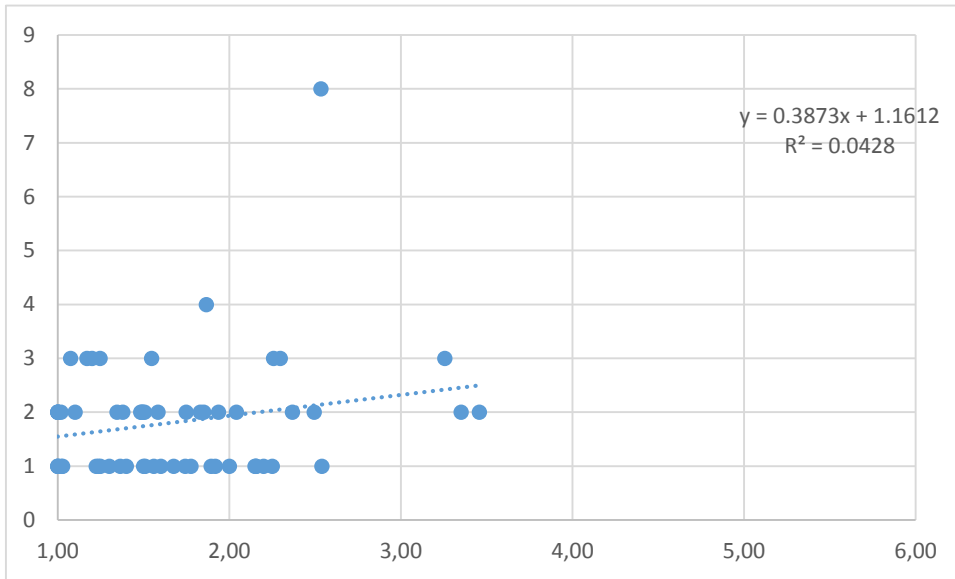


Figure 22: Number of physicians per practice and online rating jameda (Indicator 1)

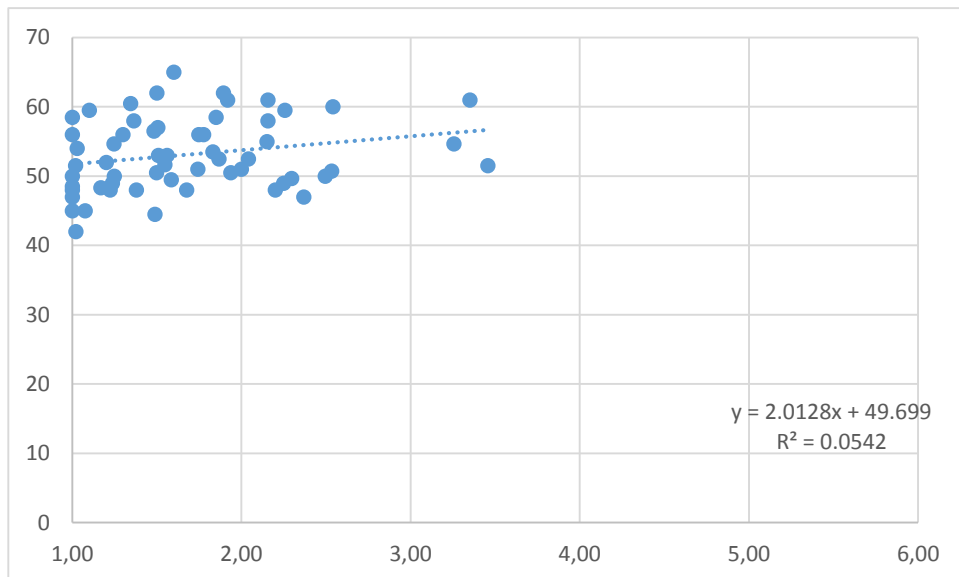


Figure 23: Age of the physicians per practice (average) and online rating jameda (Indicator 2)

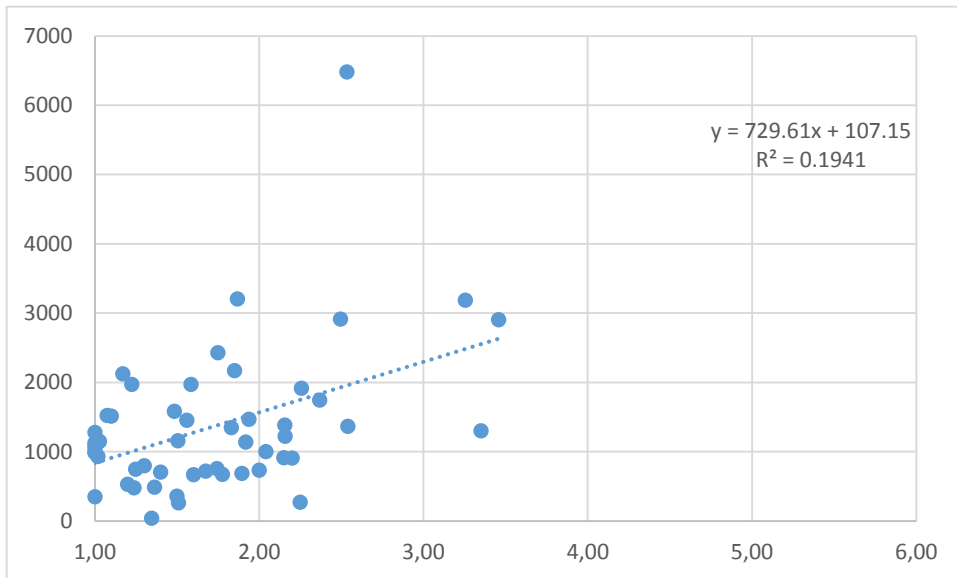


Figure 24: Patients per practice per quarter (average) and online rating jameda (Indicator 3)

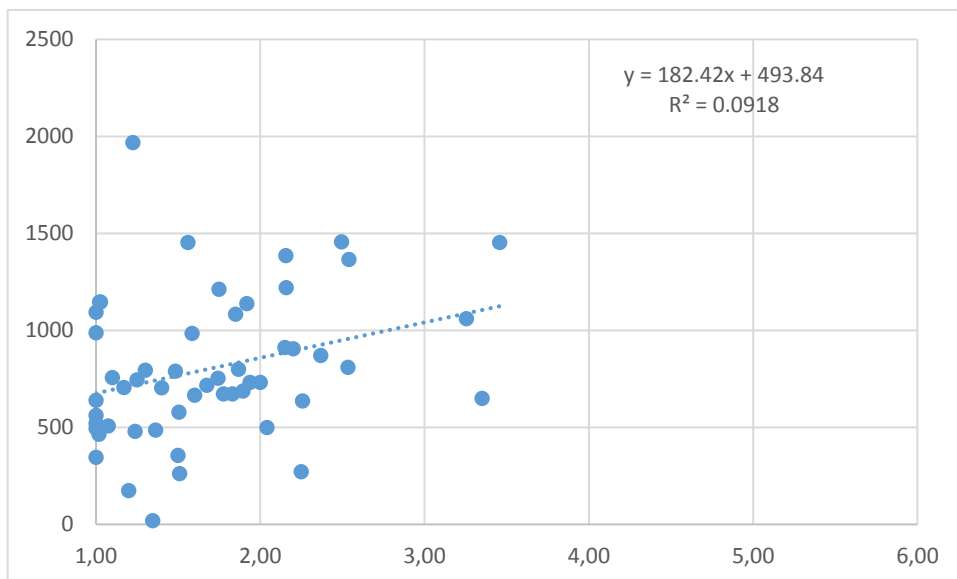


Figure 25: Patients per doctor ratio and online rating jameda (Indicator 4)

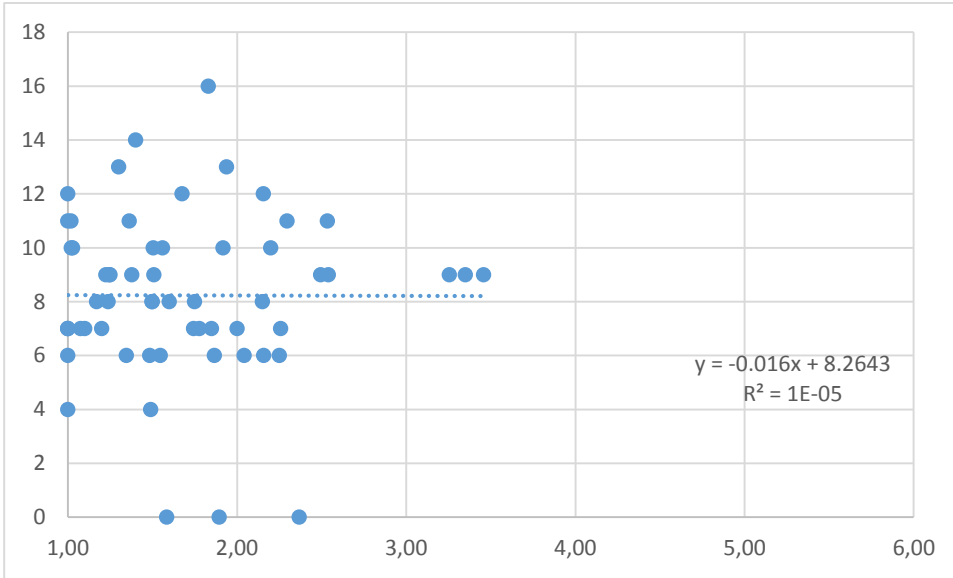


Figure 26: Quality circle visits (values practice-related) and online rating jameda (Indicator 5)

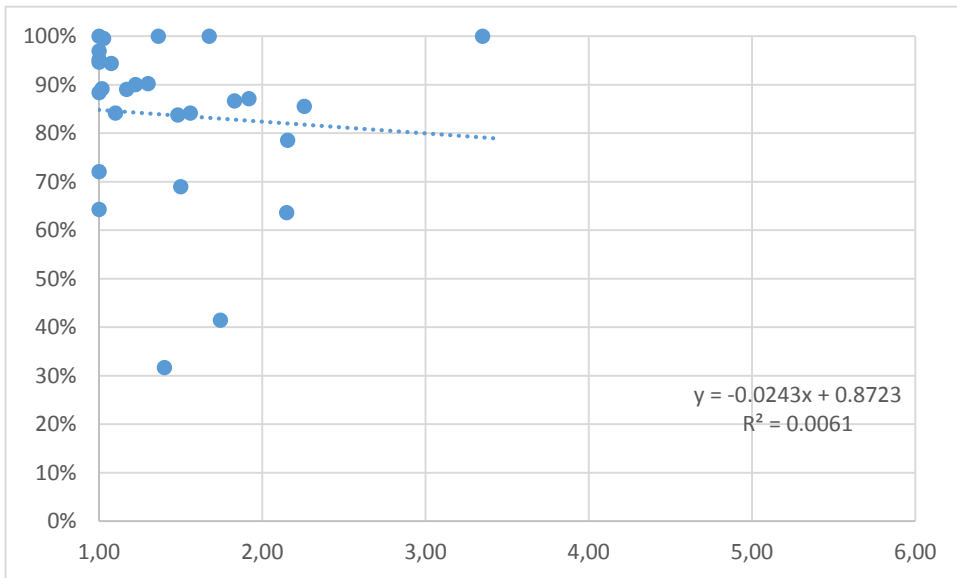


Figure 27: Chronically ill QuE-patients (Q4/2012) (in percentage) and online rating jameda (Indicator 6)

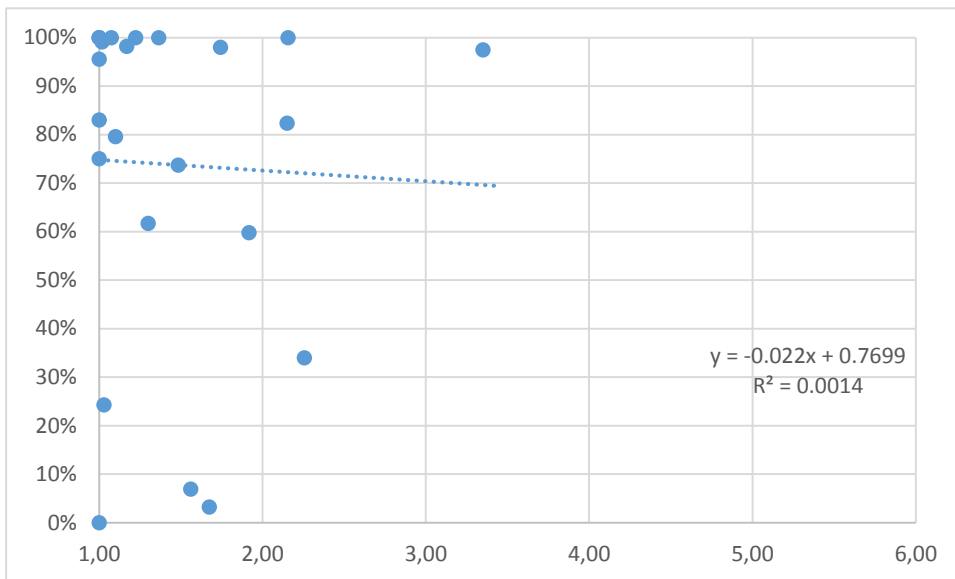


Figure 28: Patients with a diabetic retinal exam within the last 12 months (in percentage) and online rating jamedda (Indicator 7)

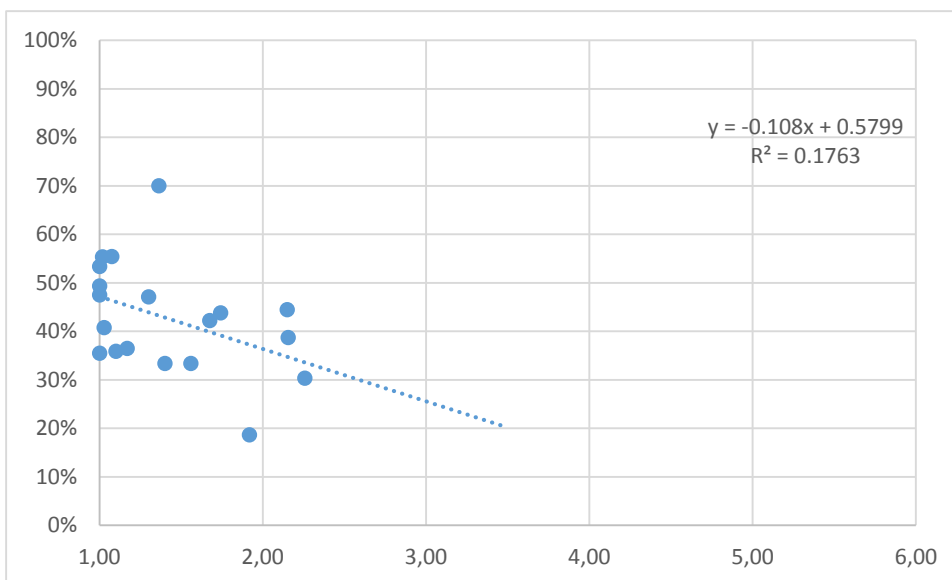


Figure 29: Patients who had an ophthalmological examination in 2012 and online rating jamedda (Indicator 8)

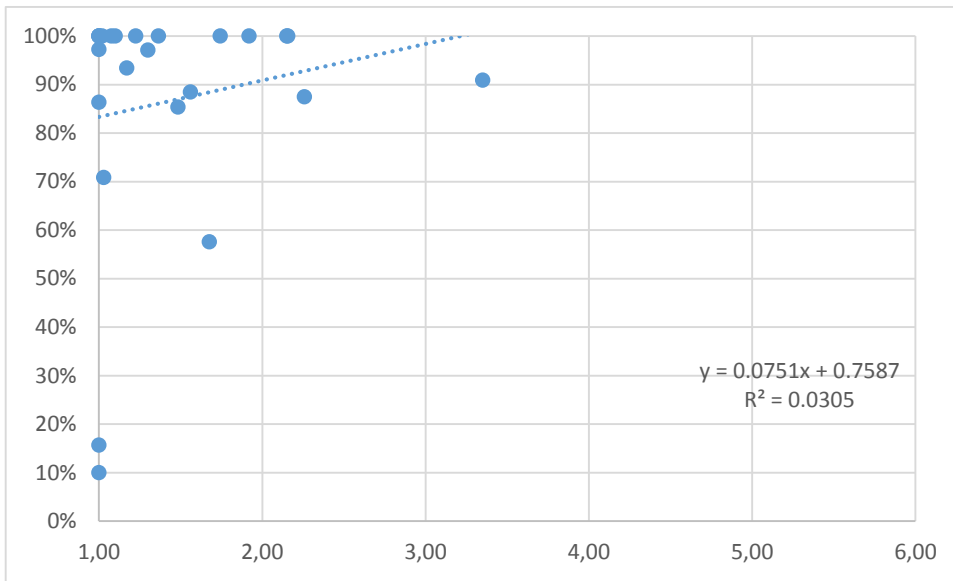


Figure 30: Patients who have been prescribed antiplatelet agents (in percentage) and online rating jameda (Indicator 9)

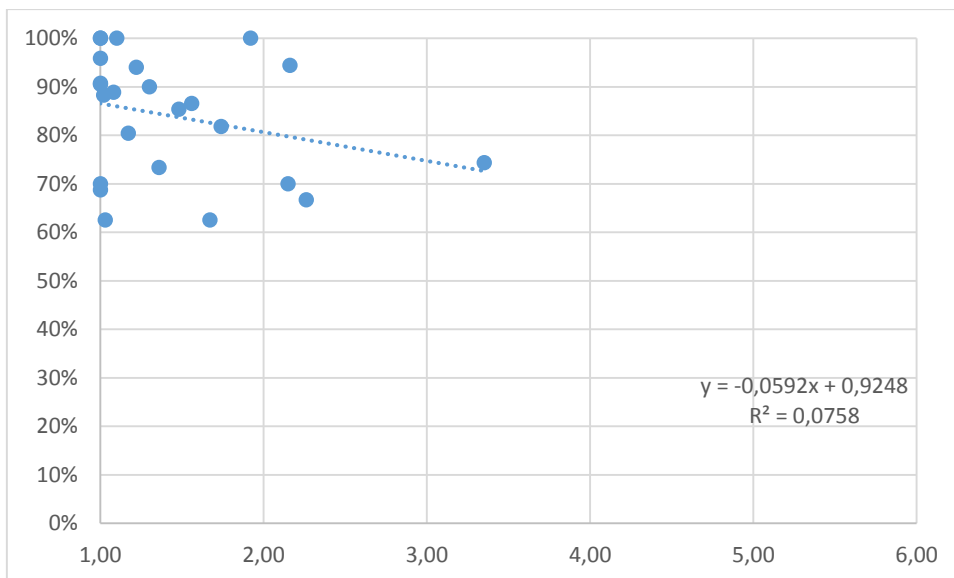


Figure 31: Patients who have been prescribed beta-blockers (in percentage) and online rating jameda (Indicator 10)

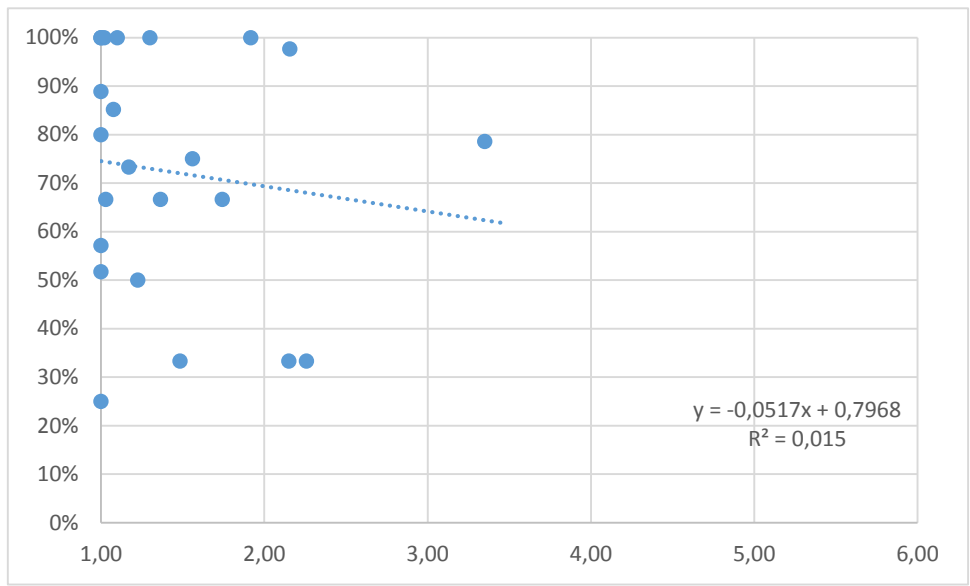


Figure 32: Patients with cardiac insufficiency who have been prescribed ACE inhibitors (in percentage) and online rating jameda (Indicator 11)

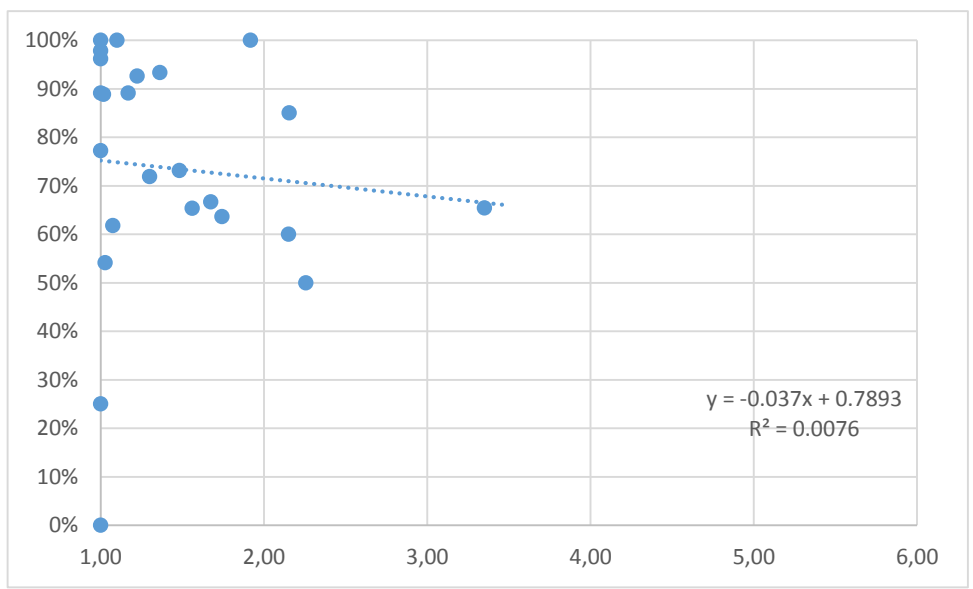


Figure 33: Patients who have been prescribed CHD statins (in percentage) and online rating jameda (Indicator 12)

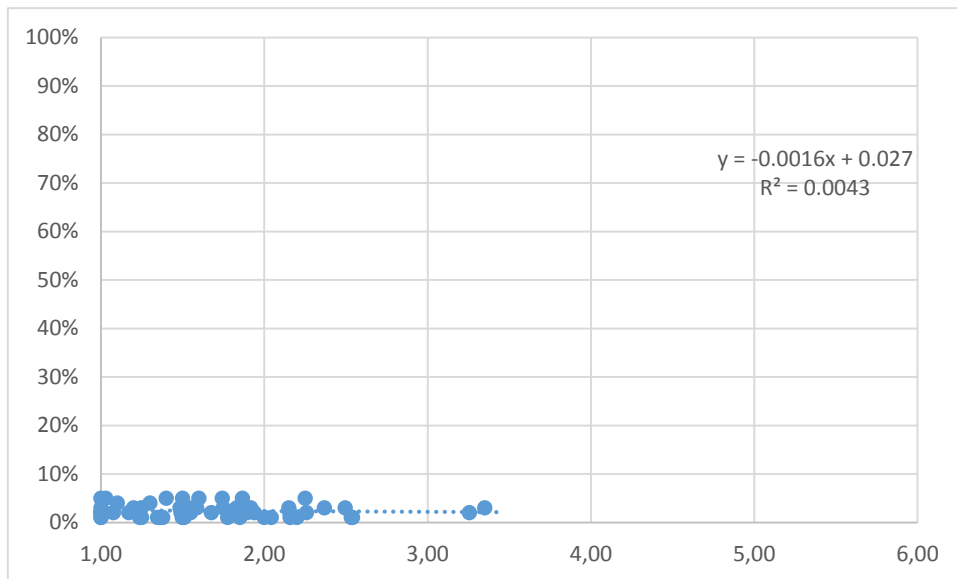


Figure 36: PRISCUS medication (2011) (in percentage) and online rating jameda (Indicator 15)

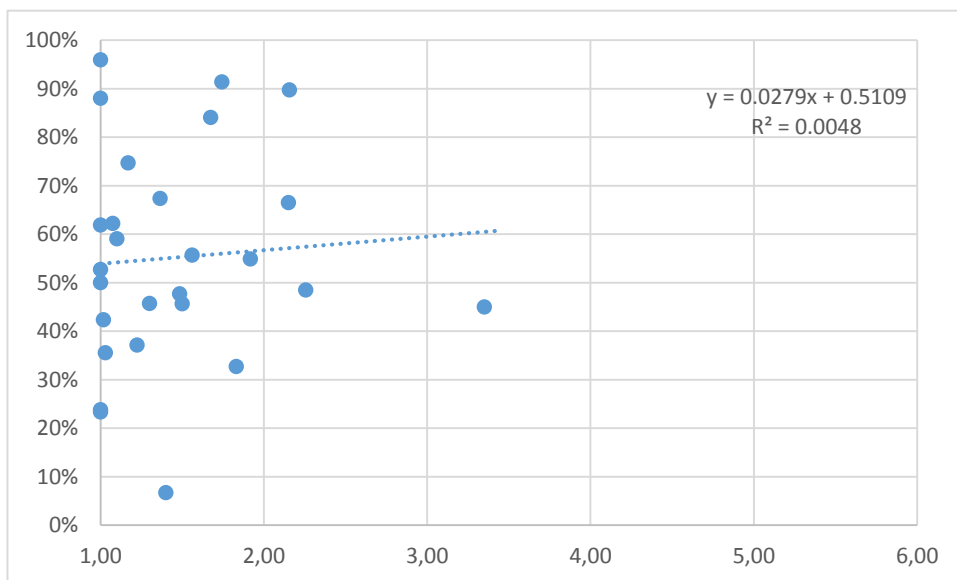


Figure 37: Patients aged 35 or older with a general preventive examination (in percentage) and online rating jameda (Indicator 16)

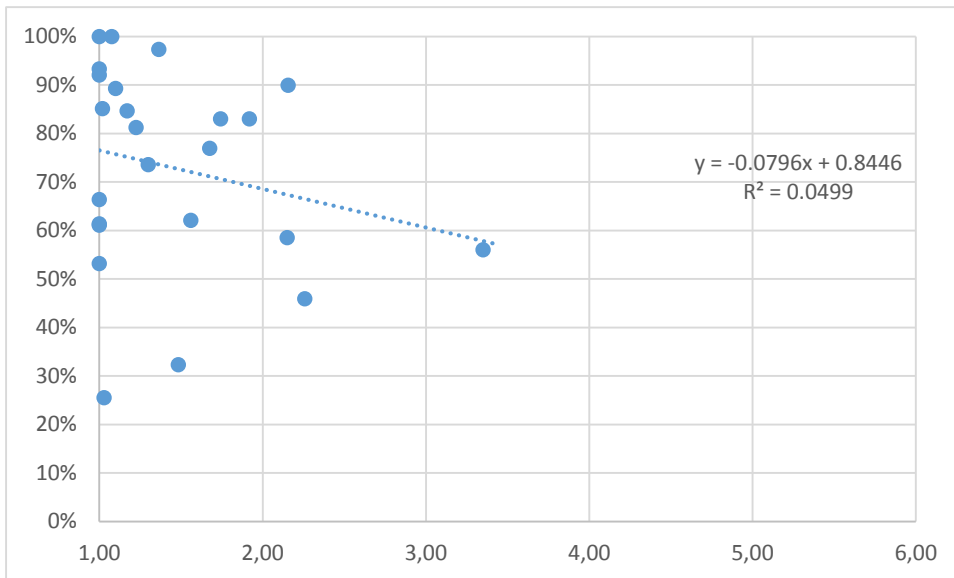


Figure 38: Patients who reached individual HbA1c-target values (in percentage) and online rating jameda (Indicator 17)

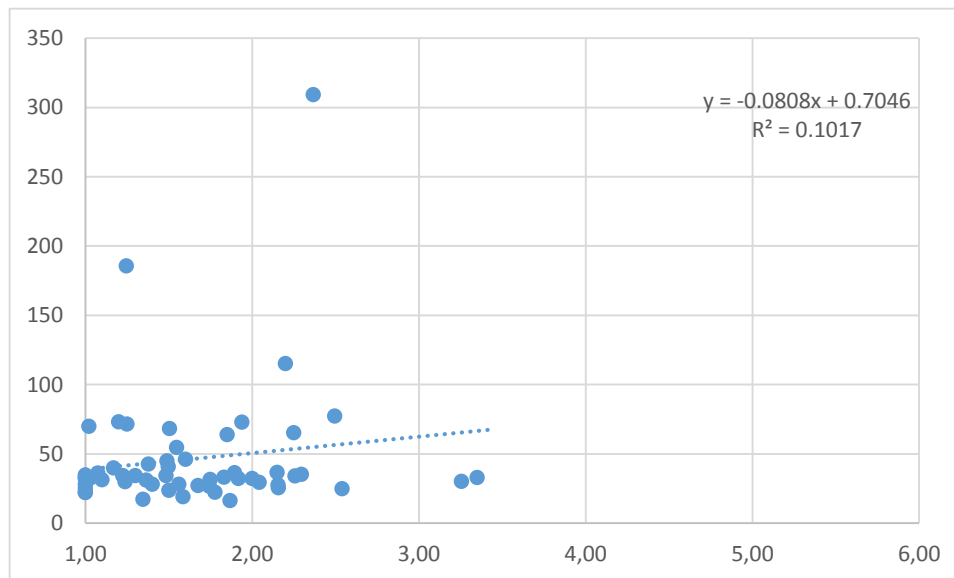


Figure 39: Patients with hypertension who show a normotensive blood pressure (in percentage) and online rating jameda (Indicator 18)

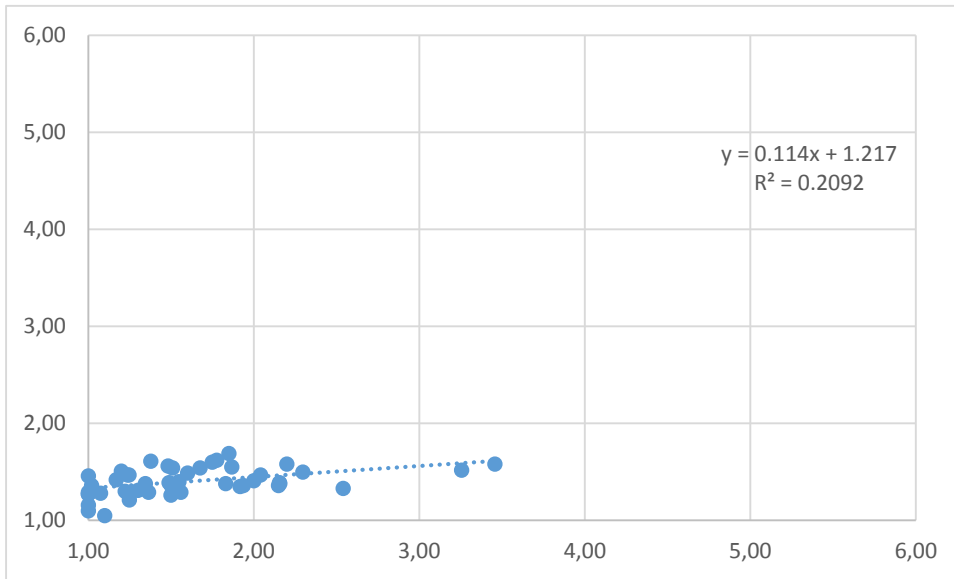


Figure 40: Offline patient survey 2012 (practice-related) and online rating jameda (Indicator 19)

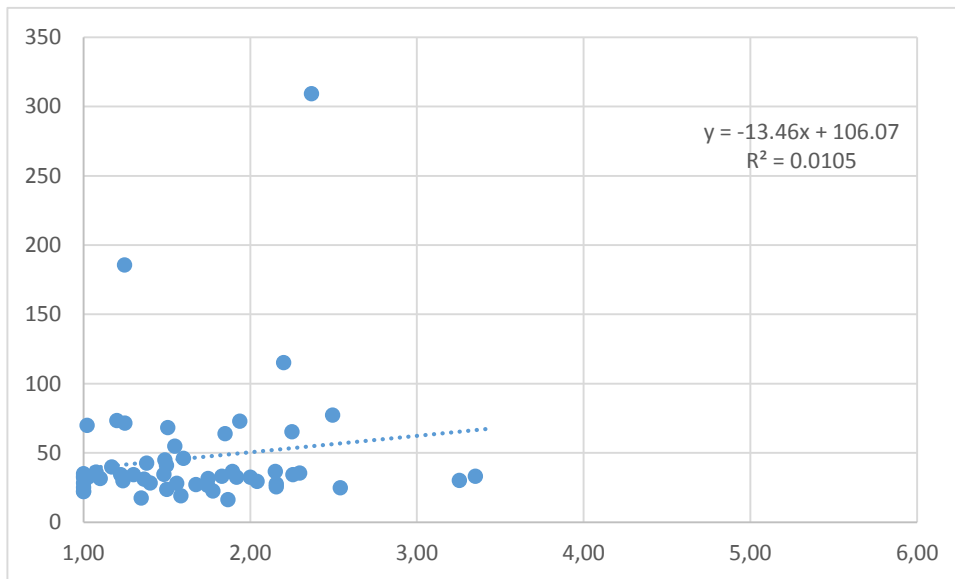


Figure 41: Cost per case (average 2012) and online rating jameda (Indicator 20)

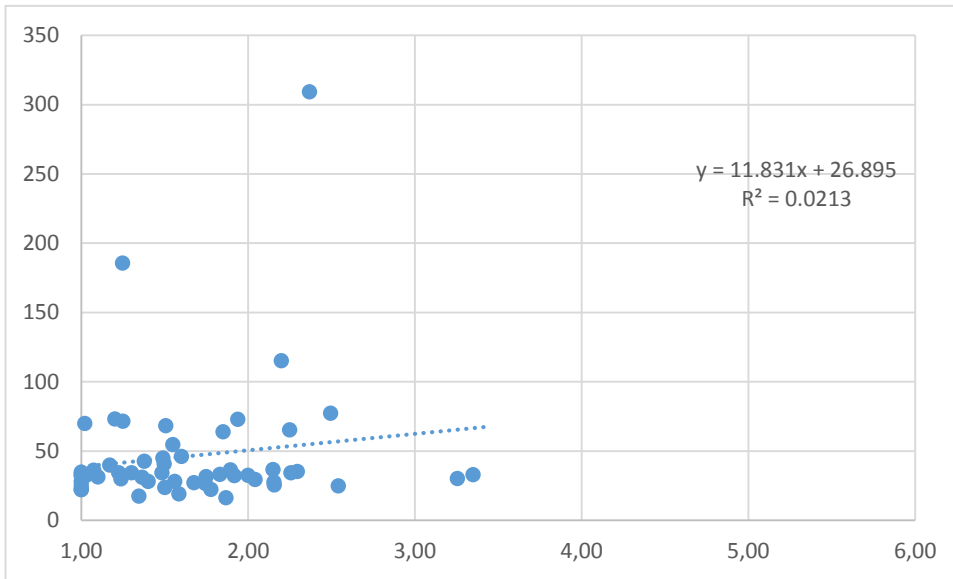


Figure 42: Cost per prescription (average 2012) and online rating jameda (Indicator 21)