

Supplementary file 1

Cognitive interview approach of phase II in the development of the MedHipPro-Q

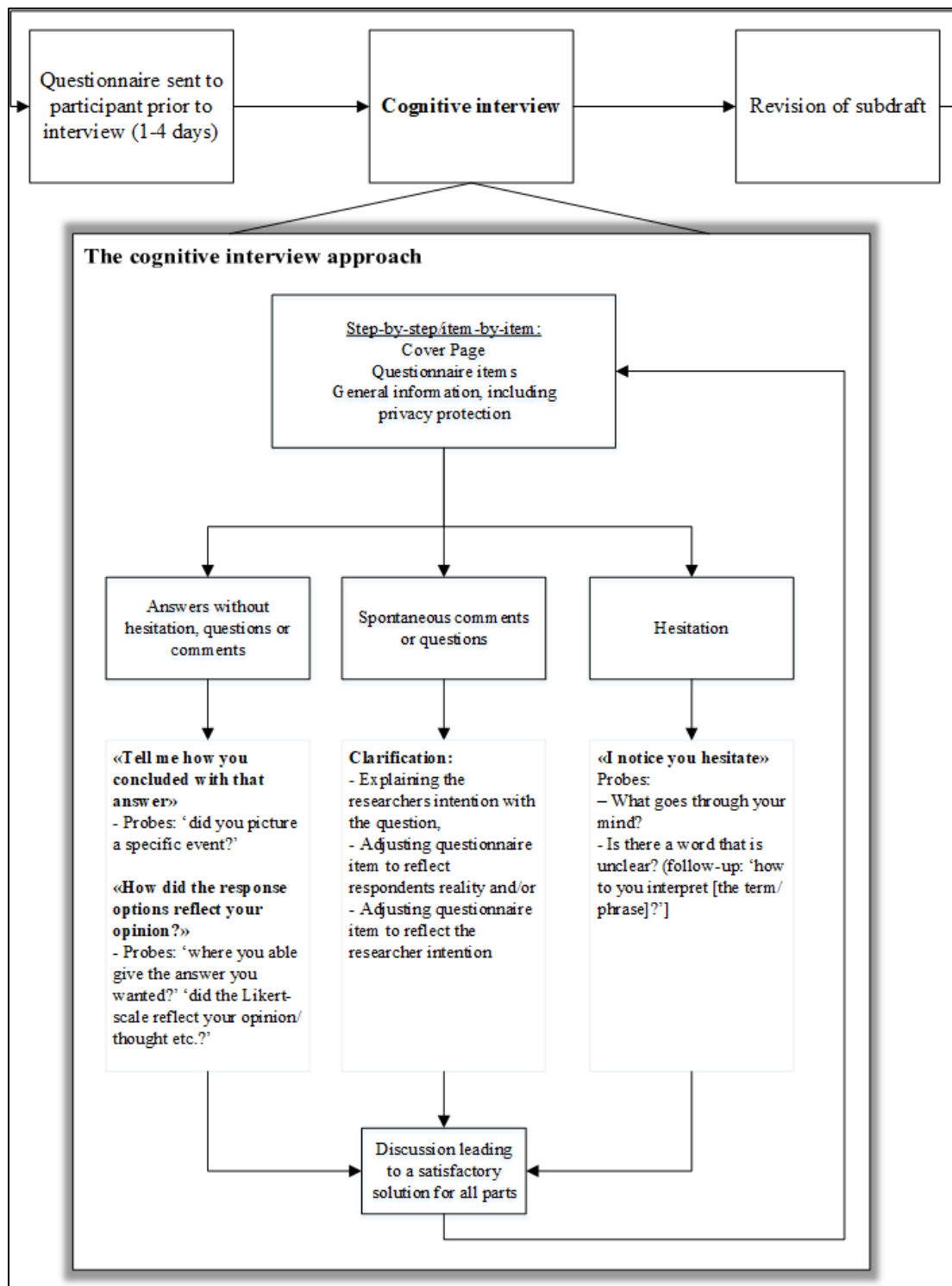


Illustration by Ben Tore Henriksen, Hospital Pharmacies Enterprise, South-Eastern Norway, as a supplementary file to the BMC Health Services Research article "Development and initial validation of MedHipPro-Q: a questionnaire assessing medication management of hip fracture patients in different care settings"