

Additional file 1.

Figure 7a.

One-way sensitivity analysis of the reference scenario. The red curves describe simulated outbreaks with the parameter values used in the manuscript.

Figure 7b

One-way sensitivity analysis of a “combined interventions” scenario including the coverage of 70% of affected households, with treatment of the index patient, prophylaxis of household contacts, and confinement to home of all household members. The red curves describe simulated outbreaks with the parameter values used in the manuscript.

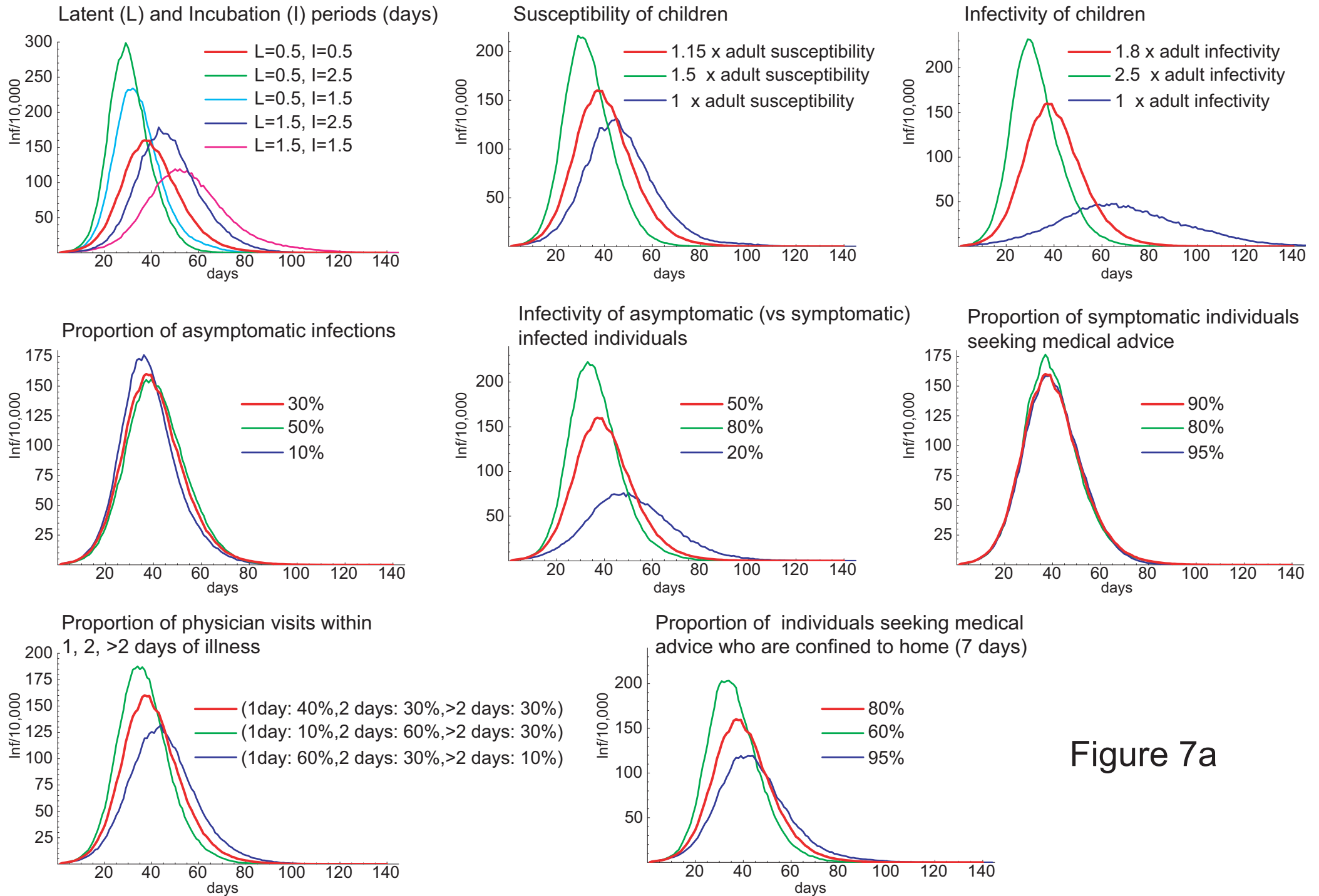


Figure 7a

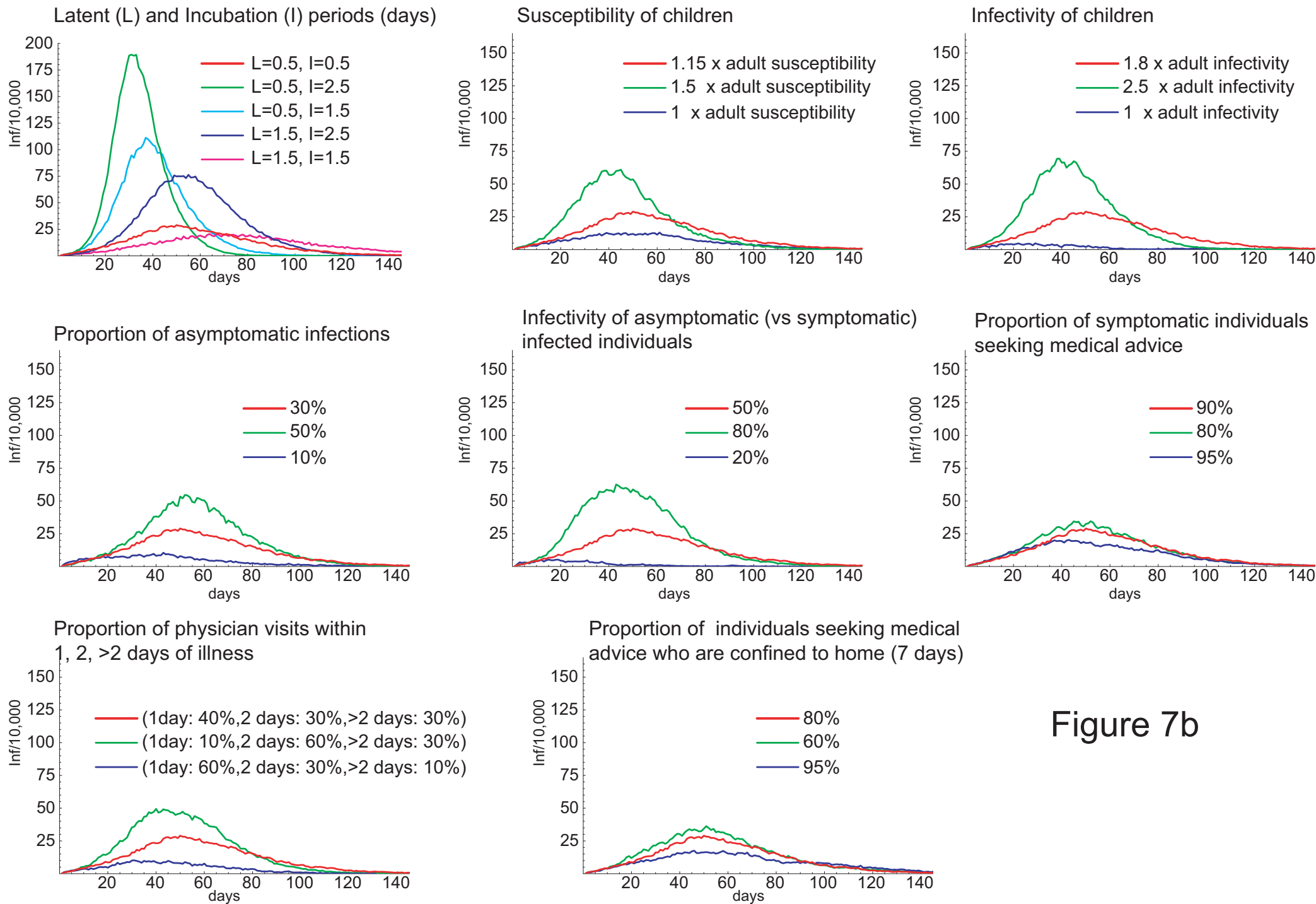


Figure 7b