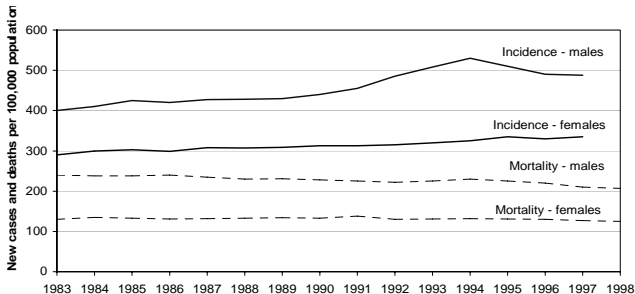


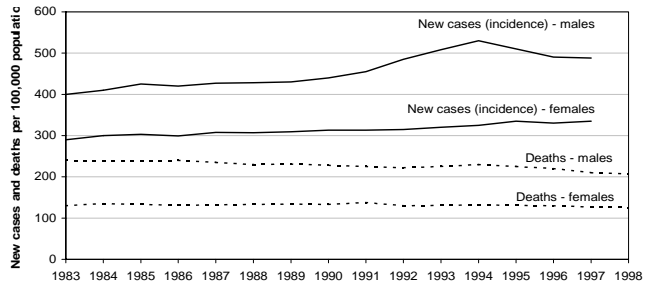
## Control graph



Source: Cancer in Australia 1997, AIHW & AACR 2000.

**Illustration A: Trends in age-standardised incidence and mortality rates for all cancers (excluding non-melanocytic skin cancers), Australia, 1983-1998**

## Intervention graph



Note: age-standardised rates allow comparisons over years and between males and females. Different age-standardised rates are *not* due to differences in the relative proportions of older or younger people in each year or sex.

Source: Cancer in Australia 1997. AIHW & AACR 2000.

**Illustration A: Trends in age-standardised incidence and death rates for all cancers (excluding non-melanocytic skin cancers), Australia, 1983-1998**