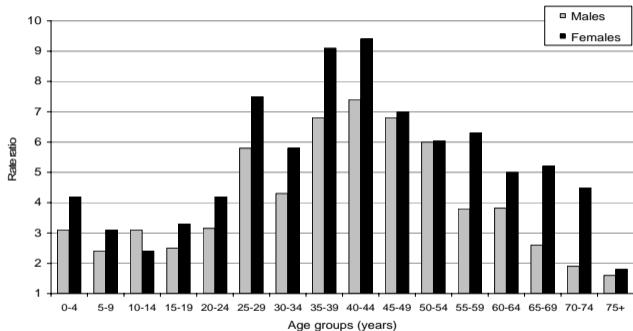


## Control graph

Illustration G: Northern Territory (NT) Aboriginal: Australian death rate ratios 1991 to 1995

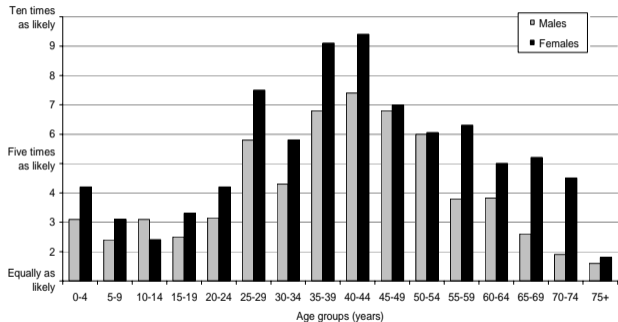


Note: Ratio of NT Aboriginal to Australian death rates for all causes by five-year age groups

Source: Dempsey & Condon 1999

## Intervention graph

Illustration G: Between 1991 and 1995, how many times more likely to die was a Northern Territory (NT) Aboriginal person compared with all Australians for each sex and age group?



Source: Dempsey & Condon 1999