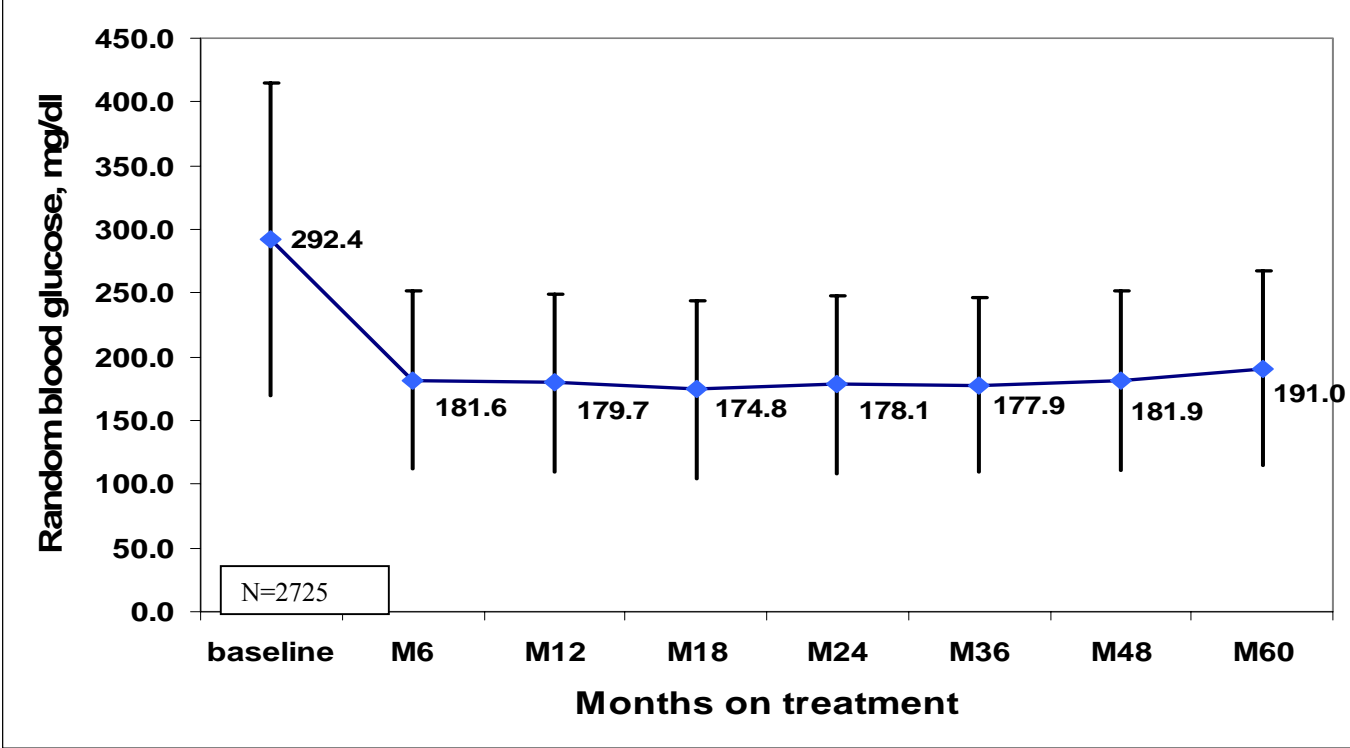
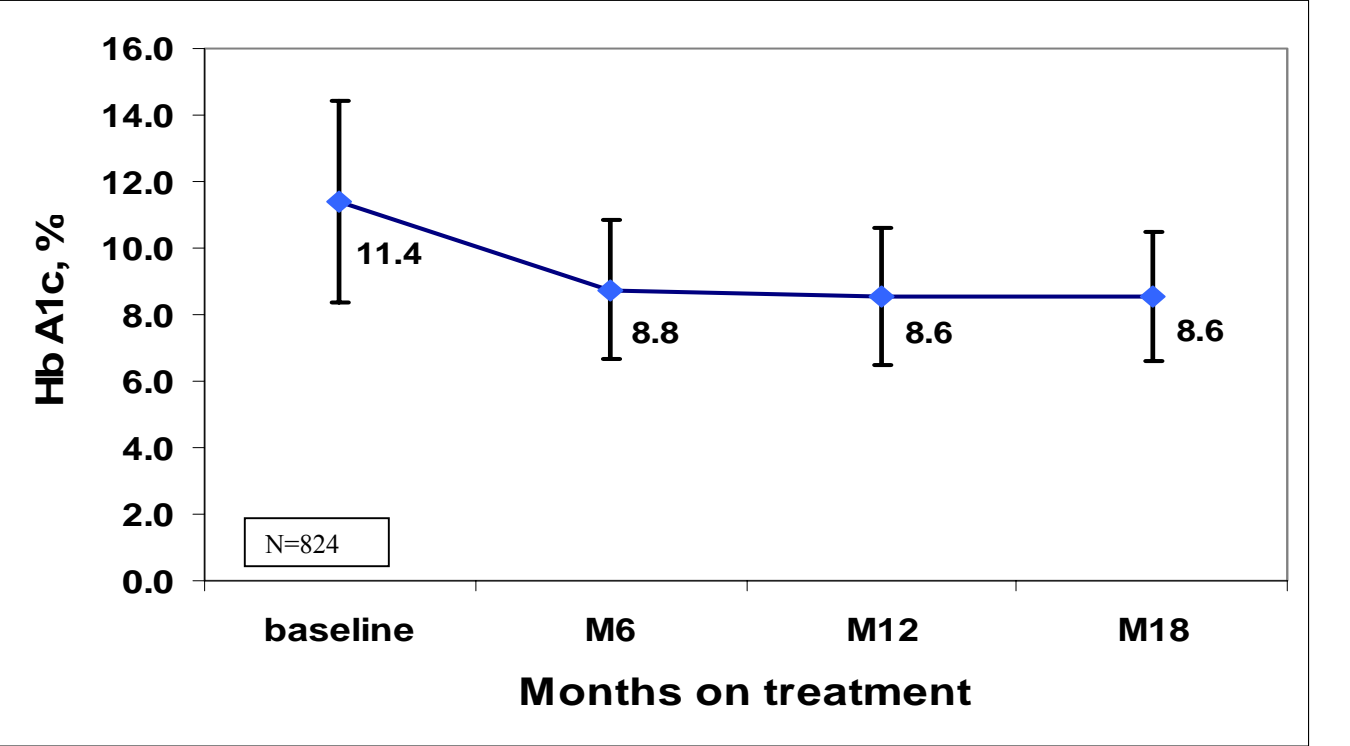


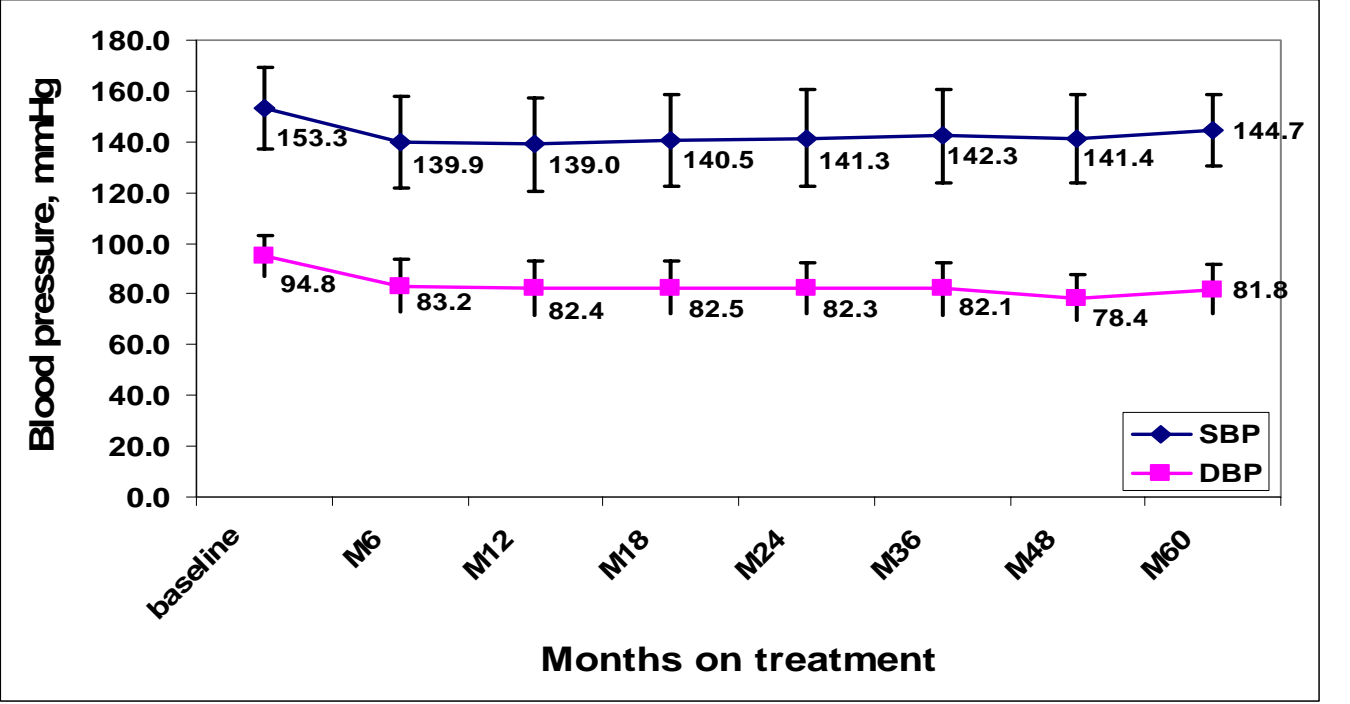
a)



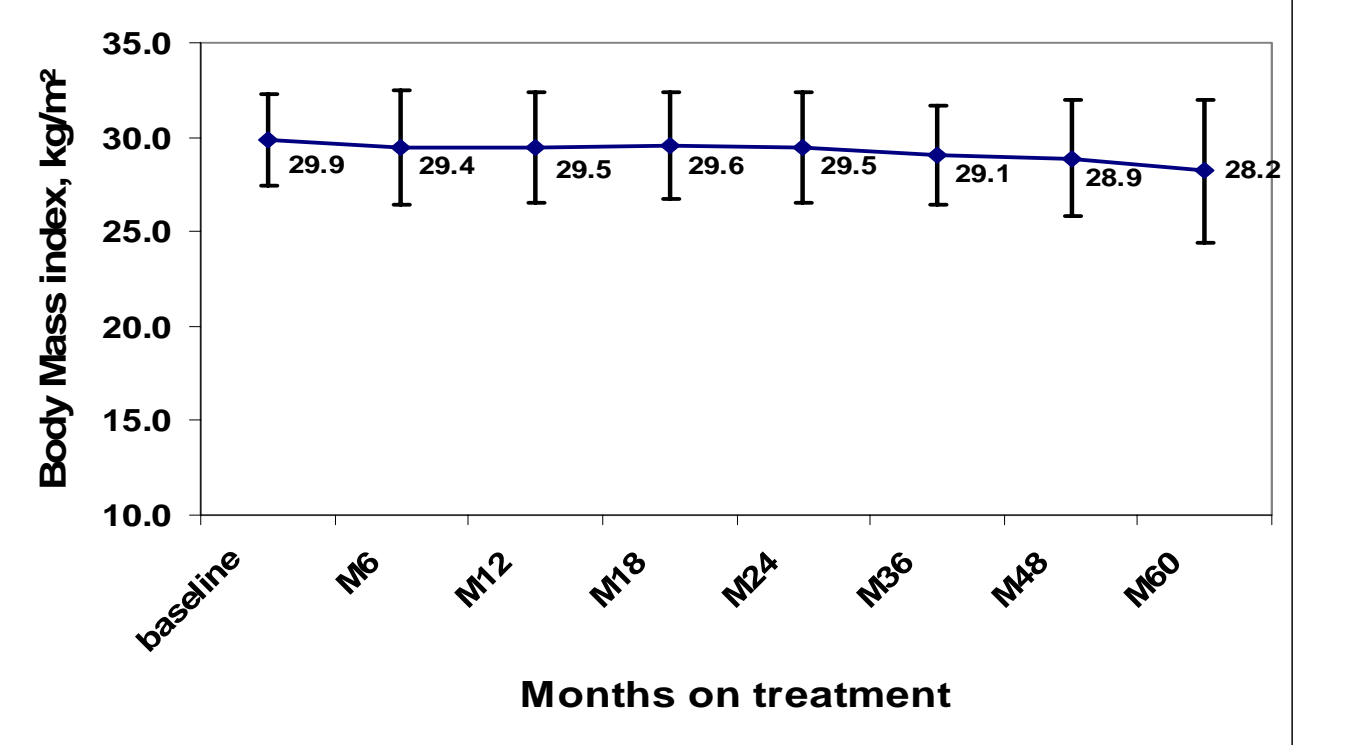
b)



c)



d)



Includes only patients who were not lost to follow-up and who had baseline and follow-up values.
Evolution of (a) random blood glucose, (b) HbA1c, (c)(d) blood pressure and (e) body mass index in diabetic patients over time. N= number of patients with baseline value.
For BMI, only patients with elevated baseline BMI (≥ 23.0) were included in the analysis.
For SBP, only patients with elevated baseline SBP (>130 mmHg) were included in the analysis.
For DBP, only patients with elevated baseline DBP (>80 mmHg) were included in the analysis.