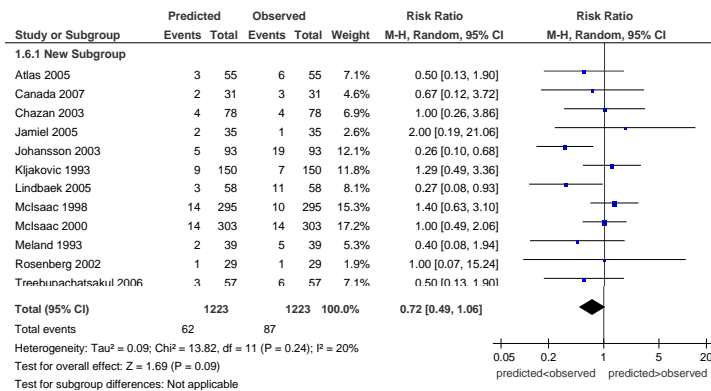
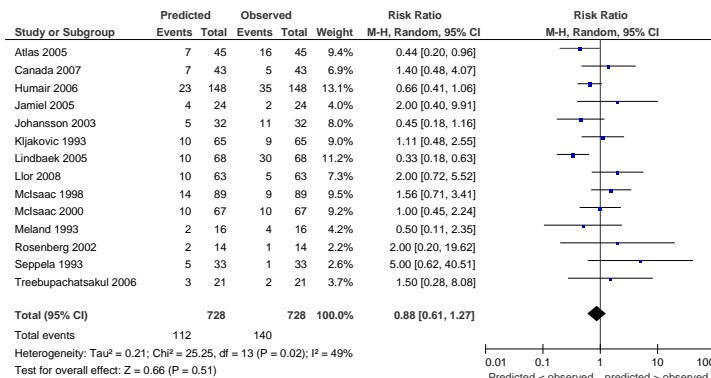


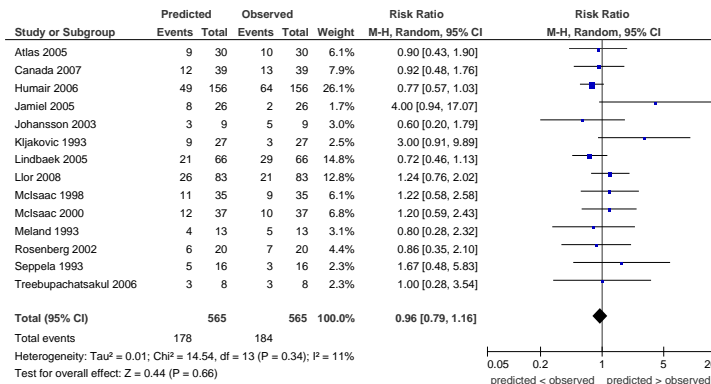
a) Centor score 0-1



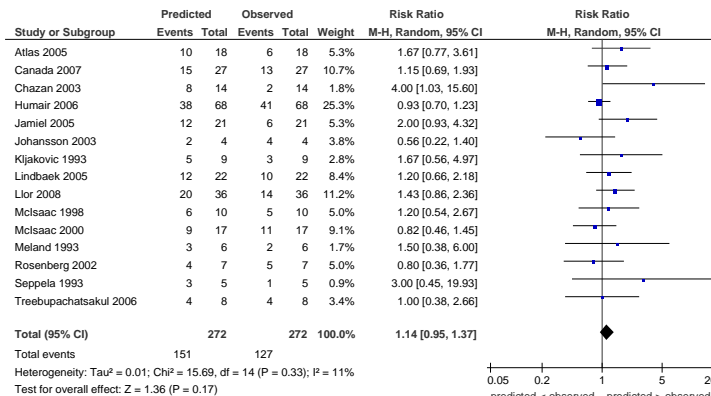
b) Centor score 2



c) Centor score 3



d) Centor score 4



Notes: Meland 1993 reported the proportion of group A positive cultures versus group C and G in their study. After doing a sensitivity analysis, we adjusted the results using the percentage of group A when estimating the number of observed GABHS positive patients. Kljakovic 1993 did not report the group (A, C or G) for cultures positive for streptococci. After a sensitivity analysis we assumed that all positive cultures were group A, as the overall prevalence in this study was relatively low.