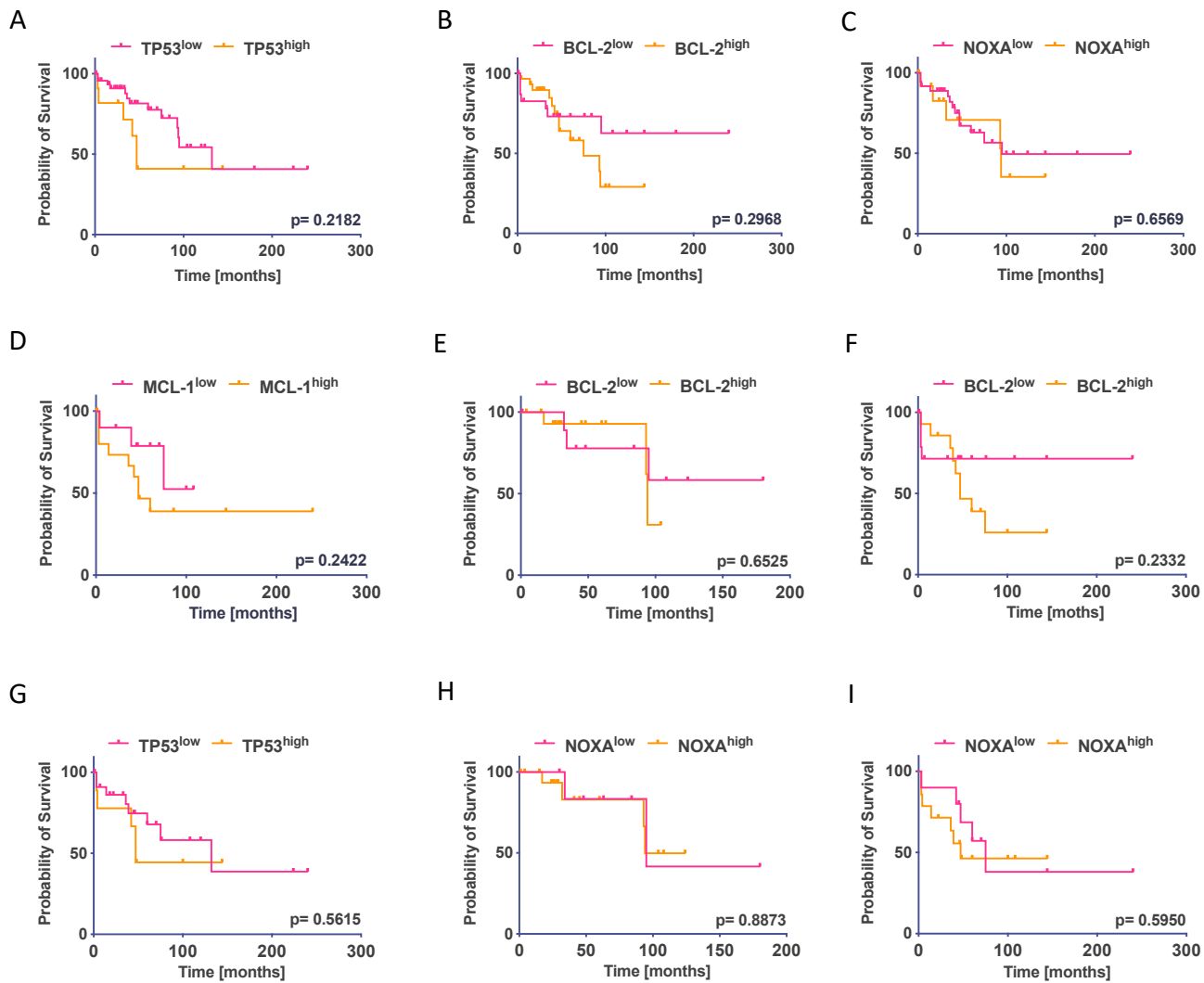
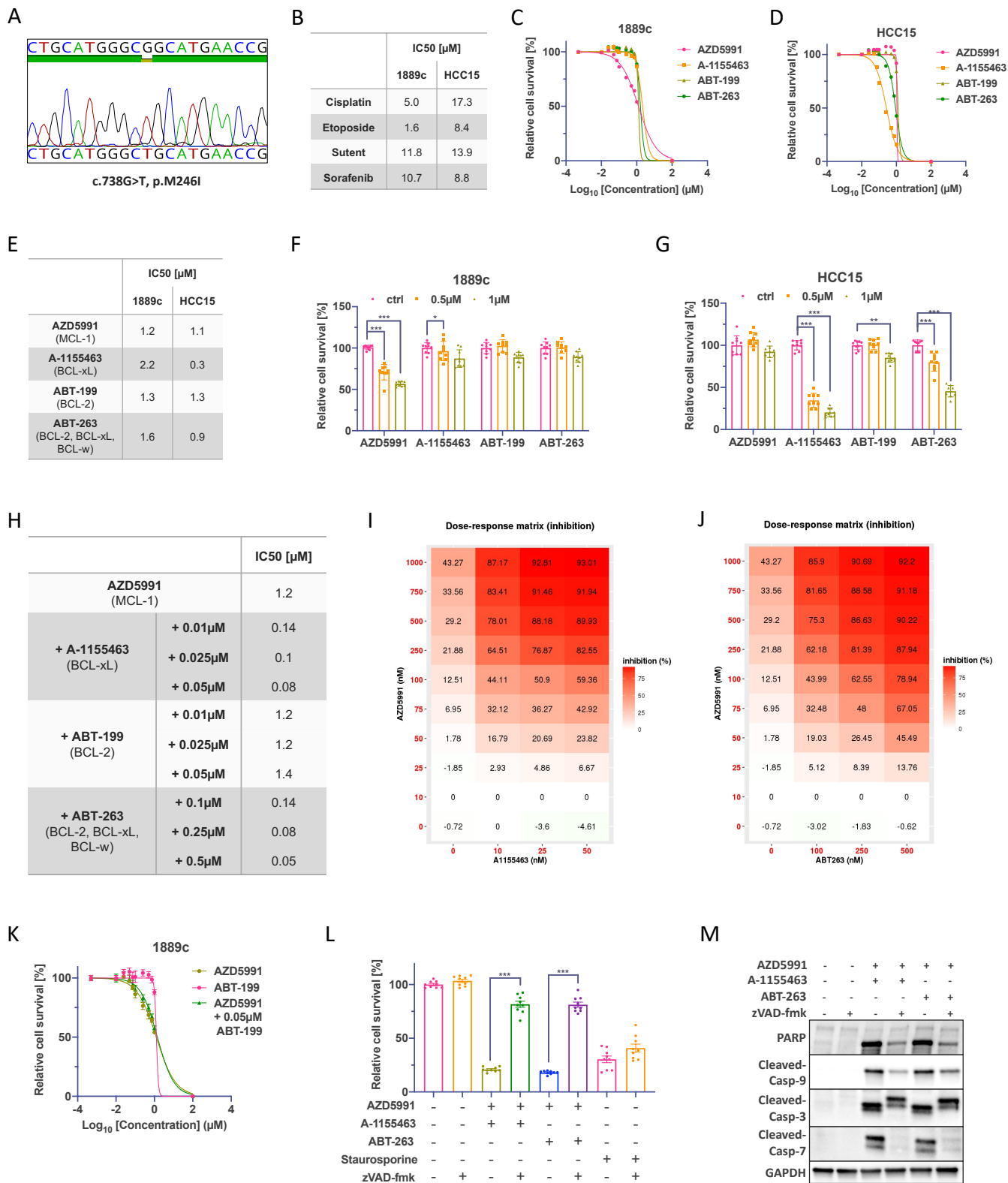
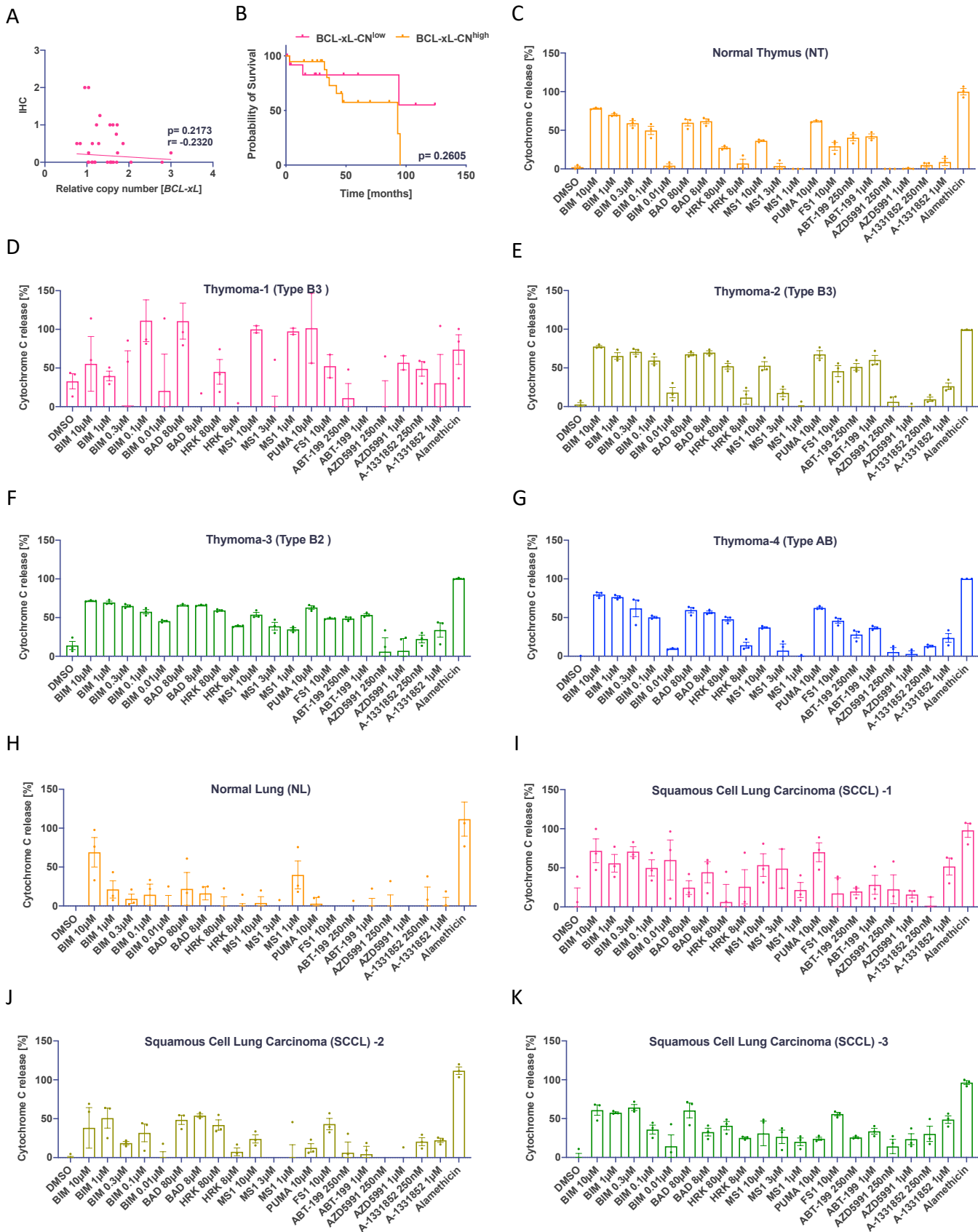


**Figure S1**



**Figure S2**



**Figure S3**

**Table S1: Clinicopathological parameters of primary patient tissue samples.**

Tissue	Masaoka-Koga	pT	N	L	V	R	Grading
Normal Thymus (NT)	-	-	-	-	-	-	-
Type B3 Thymoma (TH-1)	II	pT1a	N0	-	-	R0	-
Type B3 Thymoma (TH-2)	IIa	pT1a	N0	L0	V0	R0	-
Type B2 Thymoma (TH-3)	IIa	pT1a	N1	L0	V0	R0	-
Type AB Thymoma (TH-4)	I	pT1a	-	L0	V0	R0	-
Normal Lung (NL)	-	-	-	-	-	-	-
Squamous Cell Lung Carcinoma (SCCL-1)	-	pT4	N1	-	-	R0	G2
Squamous Cell Lung Carcinoma (SCCL-2)	-	pT2b	N0	L0	V0	R0	G3
Squamous Cell Lung Carcinoma (SCCL-3)	-	pT3	N0	-	V1	R0	G3

**Table S2: Antibodies and chemical compounds.**

Antibodies	Cat.No.	Western Blot Dilution	IHC Dilution
Primary – Cell Signaling			
BAK	#12105	1:1000	x
BAX	#2774	1:1000	x
BCL-2	#2872	1:1000	Ready to use (Dako)
BCL-xL	#2764	1:1000	1:2000
BIM	#2933	1:1000	x
Caspase-3	#9662	1:1000	x
Caspase-7	#9492	1:1000	x
Caspase-9	#9508	1:1000	x
Cleaved Caspase-3	#9664	1:1000	x
Cleaved Caspase-7	#8438	1:1000	x
Cleaved Caspase-9	#7237	1:1000	x
Cleaved PARP	#5625	1:1000	x
GAPDH	#2118	1:5000	x
MCL-1	#4572	1:1000	1:200
NOXA	#14766	1:1000	1:200
PARP	#9542	1:1000	x
Primary – Santa cruz			
TP53	sc-126	1:1000	Ready to use (Dako)
Secondary (all Sigma-Aldrich)			
Polyclonal Goat anti-rabbit	P0260	1:10000	x
Polyclonal Rabbit anti-mouse	P0448	1:10000	x
Compounds (all Selleckchem)			
A-1155463	#S7800		
ABT-199 (Venetoclax)	#S8048		
ABT-263 (Navitoclax)	#S1001		
AZD-5991	#S8643		
Cisplatin	#S1166		
Etoposide	#S1225		
Sorafenib	#S7397		
Sunitinib	#S1042		
zVAD.fmk	#S7023		

**Table S3: Primer sequences, plasmids and siRNAs.**

Primer	Sequence
3p2-for	5'-CACAGAGTAAAGGCCCGTGACTTT-3'
3p2-rev	5'-ACAGAAGGGCCAGAAAGAACCGAAC-3'
BCL-xL-for1	5'-TGTGCTTCAGAGATCAGGCA-3'
BCL-xL-rev1	5'-GGTCTGTGGGTCATTGATGC-3'
BCL-xL-for2	5'-GTTACCCTCTCTCCTCTGCC-3'
BCL-xL-rev2	5'-GAGGGAGGGATAAGGAAGCC-3'
MCL-1-for1	5'-GTCCCCAACTATGCCCTCTT-3'
MCL-1-rev1	5'-GTGCTTCCCTGAGACCTGAT-3'
MCL-1-for2	5'-AGTGGTATGGCGGTCTTGAA-3'
MCL-1-rev2	5'-TCCATTA AACAGGCACCGC-3'

---

Plasmids (all OriGene Technologies)	Cat.No.
NOXA (PMAIP1) (NM_021127) Human Tagged ORF clone	RC202071
pCMV6-Entry Mammalian Expression Vectors	PS100001

---

siRNAs (all Qiagen)	Cat.No.
Hs_BCL2L1_2	#SI00023191
Hs_BCL2L1_10	#SI03112018
Hs_MCL1_6	#SI02781205
Hs_MCL1_8	#SI03069003
Neg. ctrl. siRNA	#1027281