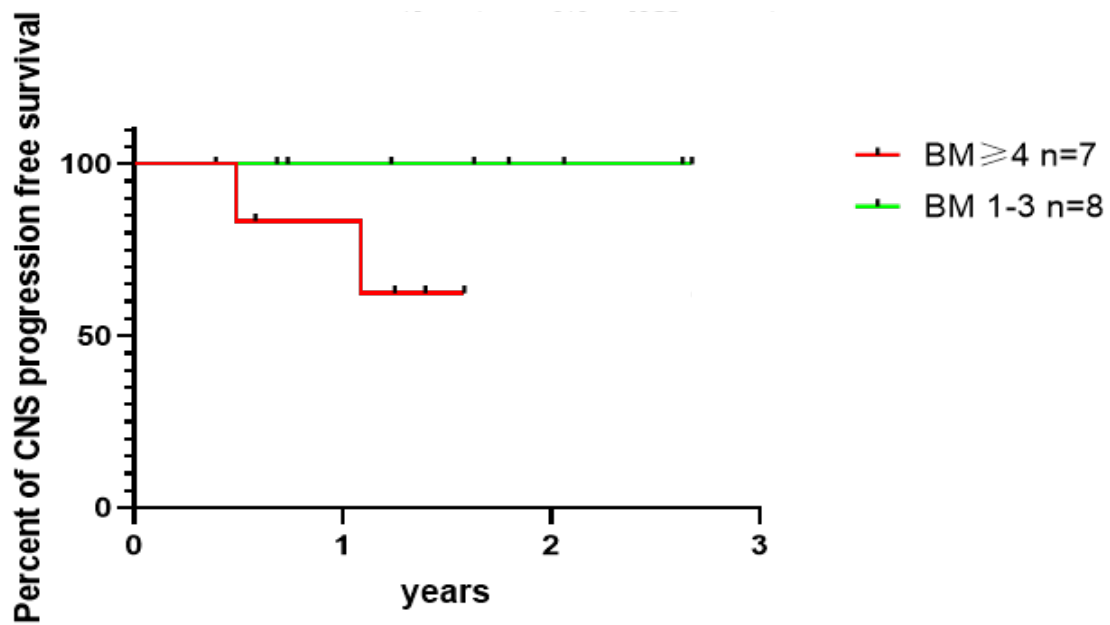


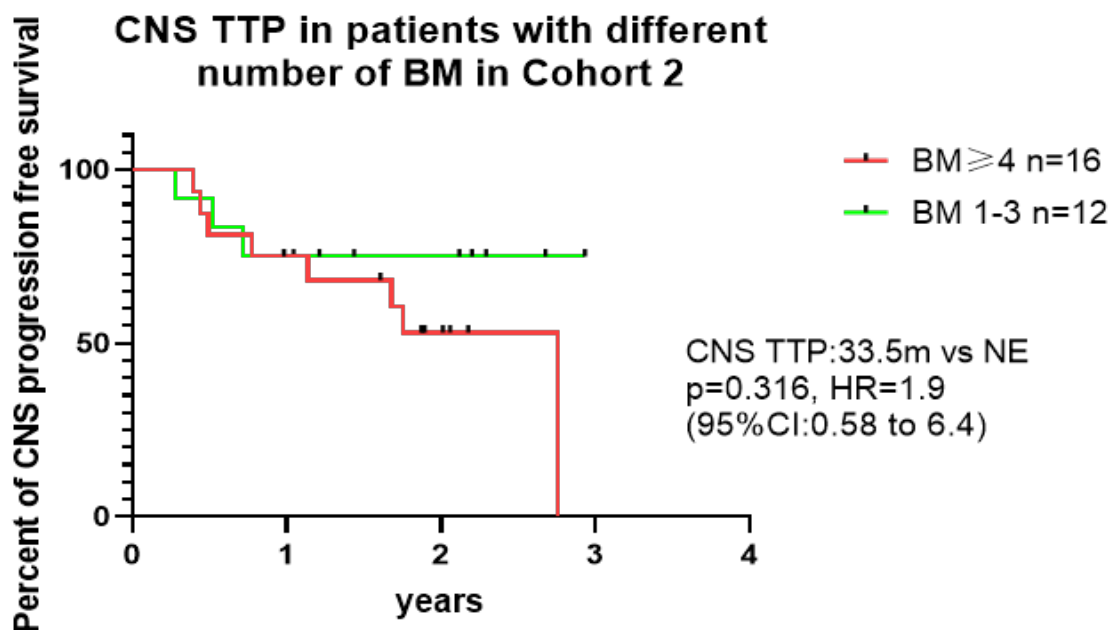
FigS1: CNS TTP for patients with LM

9 patients with LM, with median follow-up of 16.8 months, CNS TTP was 408d.



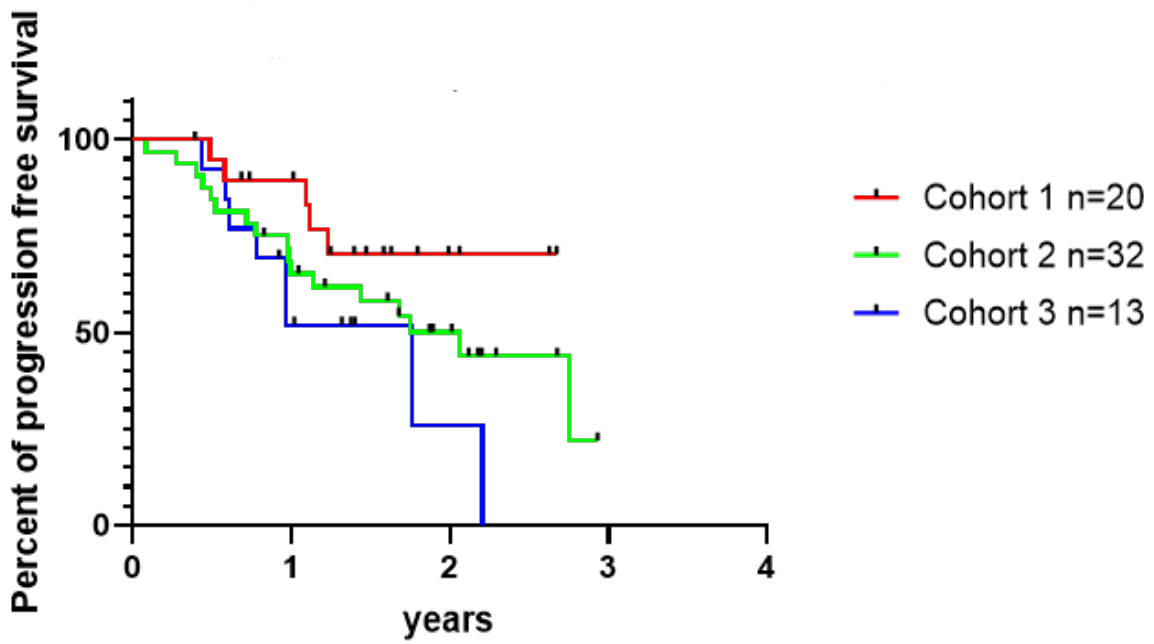
FigS2a: CNS TTP for patients with BM 1-3 vs 4 in Cohort 1

CNS TTP for patients with different number of BM in Cohort 1 was NE vs NE,
 $p=0.0925$, HR undefined.



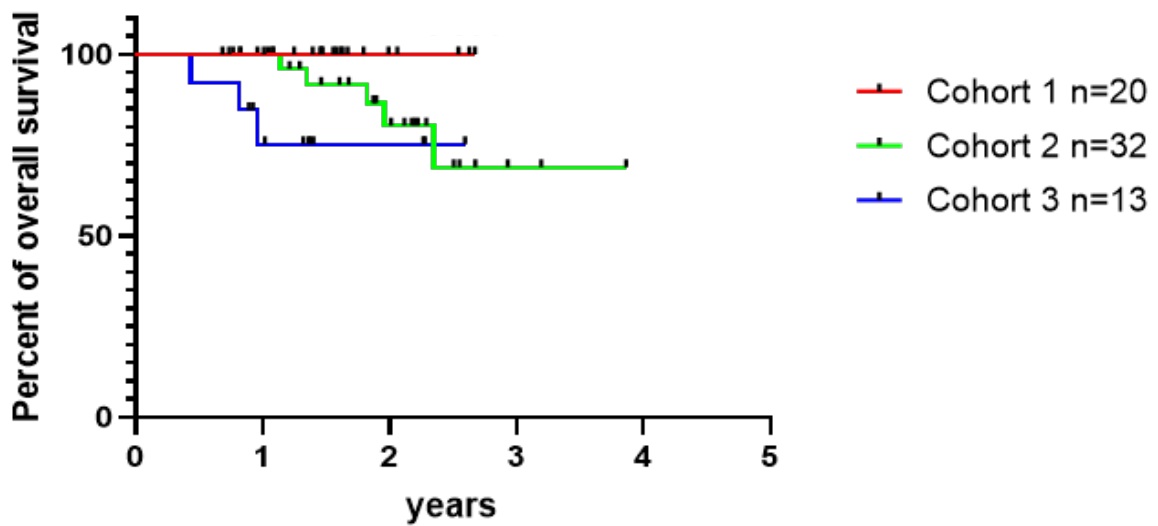
FigS2a: CNS TTP for patients with BM 1-3 vs 4 in Cohort 2

CNS TTP for patients with different number of BM in Cohort 2 was 33.5m vs NE,
 $p=0.316$, HR=1.9(95% CI: 0.58 to 6.4).



FigS3a: progression free survival in three cohorts

With median follow-up of 19.2 months, 22.5 months, 15.8 months in these three cohorts respectively, PFS was NE vs 24.7 months vs 21.2 months.



FigS3b: overall survival in three cohorts

With median follow-up of 19.2 months, 22.5 months, 15.8 months in these three cohorts respectively, OS was NE vs NE vs NE.