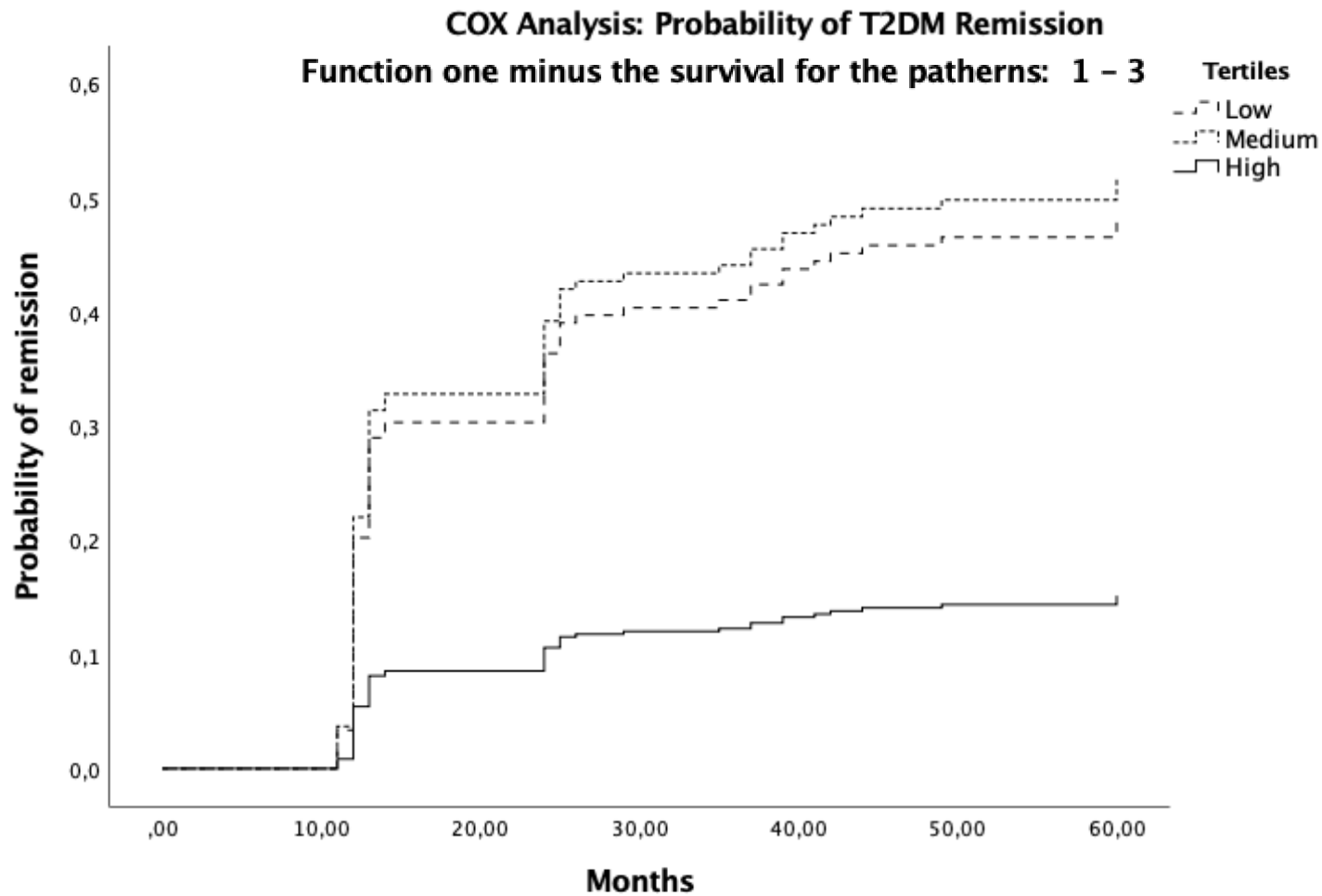


Figure S1. Ranking with the 12 most significant metabolites derived from the O-PLS DA model. They are organised from top to down from the most significant to the least, and the numeric R squared value.

A)



B)

		HR	95.0% CI for HR	
			Lower	Upper
Tertile 1	Unadjusted	4.04	1.80	9.05
	Adjusted*	3.80	1.67	8.63
Tertile 2	Unadjusted	4.45	1.93	10.25
	Adjusted*	4.31	1.83	10.17
Tertile 3 (ref.)		1.00	1.00	1.00

Figure S2. Adjusted Cox for the analysis of the patient risk scored grouped in ascending tertiles of glycated haemoglobin.