

## **ADDITIONAL FILE 3**

### **Thrombospondin 1 enhances systemic inflammation and disease severity in acute-on-chronic liver failure**

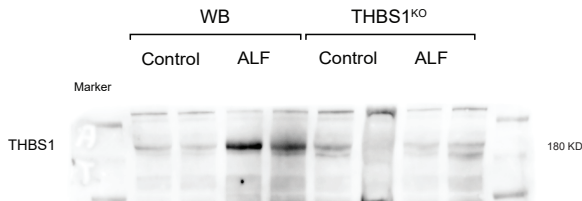
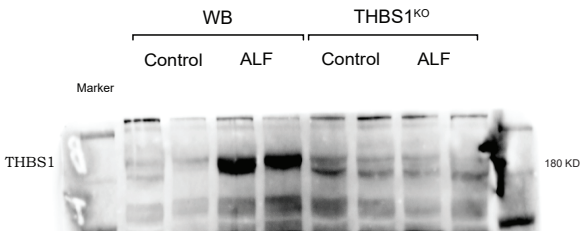
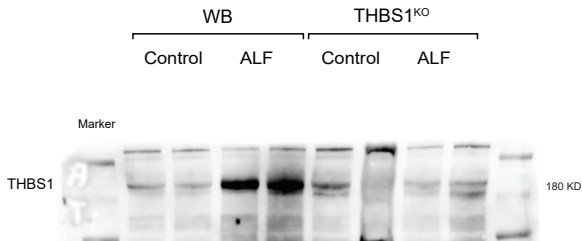
Hozeifa Mohamed Hassan<sup>†</sup>, Xi Liang<sup>†</sup>, Jiaojiao Xin<sup>†</sup>, Yingyan Lu, Qun Cai, Dongyan Shi, Keke Ren, Jun Li, Qi Chen, Jiang Li, Peng Li, Beibei Guo, Hui Yang, Jinjin Luo, Heng Yao, Xingping Zhou, Wen Hu, Jing Jiang<sup>\*</sup>, Jun Li<sup>\*</sup>

#### **Contents**

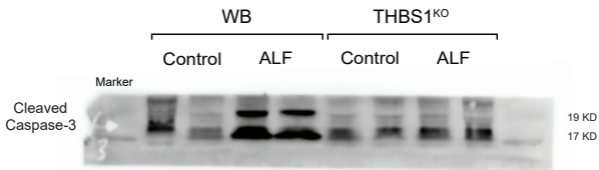
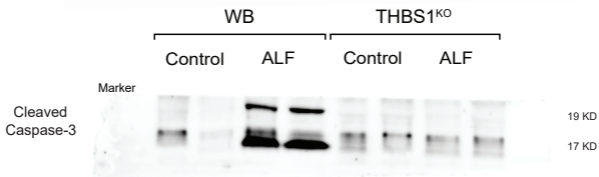
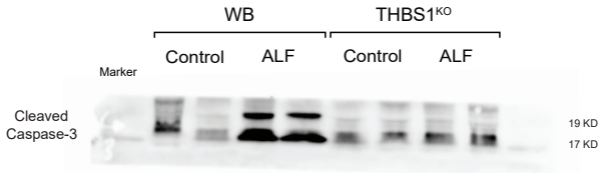
- **Supplementary Supplementary original western blots**



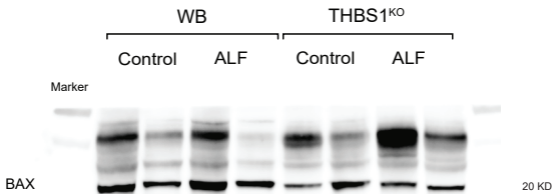
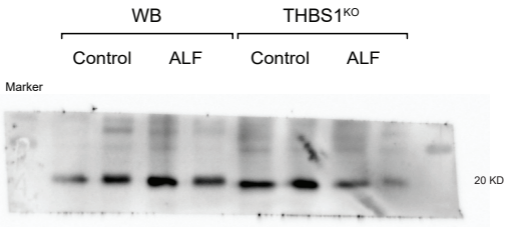
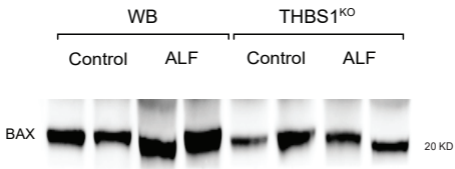
**Representative western immunoblotting of  
THBS1 in liver tissue collected  
from WT and THBS1<sup>KO</sup> mice**



**Representative western immunoblotting of  
cleaved caspase-3 in liver tissue collected  
from WT and THBS1<sup>KO</sup> mice**



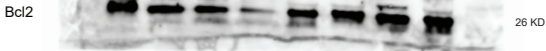
**Representative western immunoblotting of  
BAX in liver tissue collected  
from WT and THBS1<sup>KO</sup> mice**



**Representative western immunoblotting of  
Bcl2 in liver tissue collected  
from WT and THBS1<sup>KO</sup> mice**

WB THBS1<sup>KO</sup>  
Control ALF Control ALF

Marker



WB THBS1<sup>KO</sup>  
Control ALF Control ALF

Marker

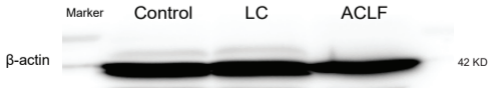
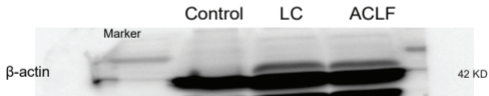
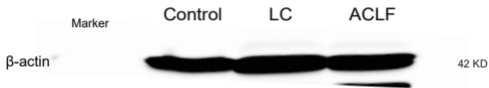


WB THBS1<sup>KO</sup>  
Control ALF Control ALF

Marker

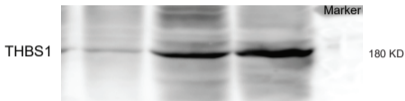


**Representative western immunoblotting of  
 $\beta$ -actin in liver tissue collected  
from ACLF rats**

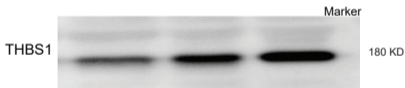


# Representative western immunoblotting of THBS1 in liver tissue collected from ACLF rats

Control      LC      ACLF



Control      LC      ACLF

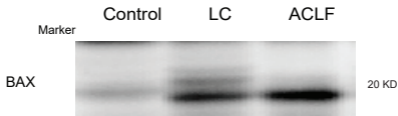
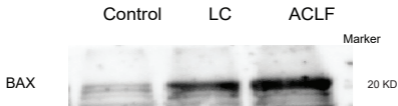
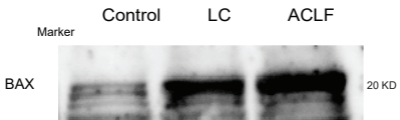


Control      LC      ACLF

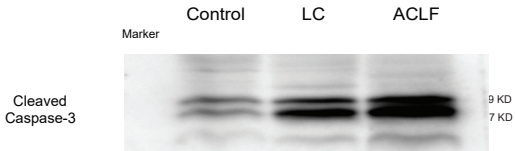
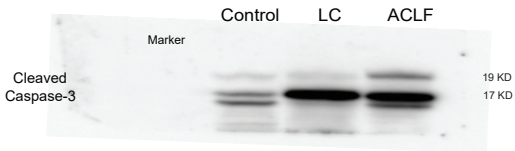
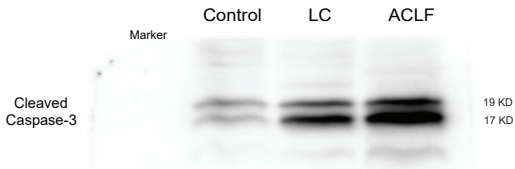




# Representative western immunoblotting of BAX in liver tissue collected from ACLF rats



# Representative western immunoblotting of cleaved caspase-3 in liver tissue collected from ACLF rats



# Representative western immunoblotting of Bcl2 in liver tissue collected from ACLF rats

