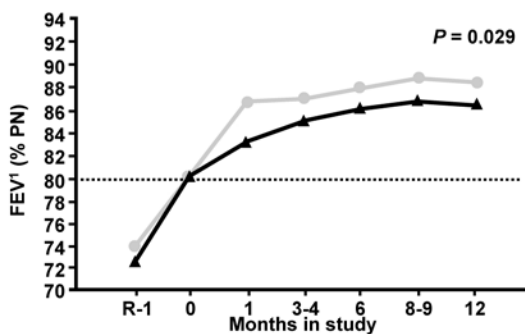
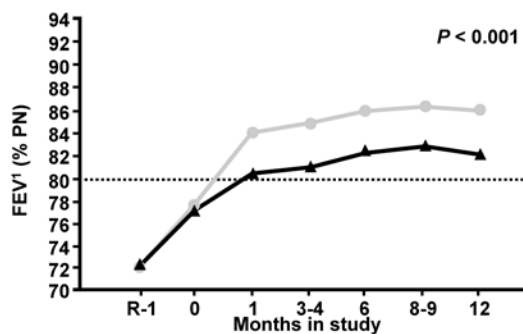


A) BUD/FORM maintenance and reliever therapy vs. higher maintenance dose ICS + SABA

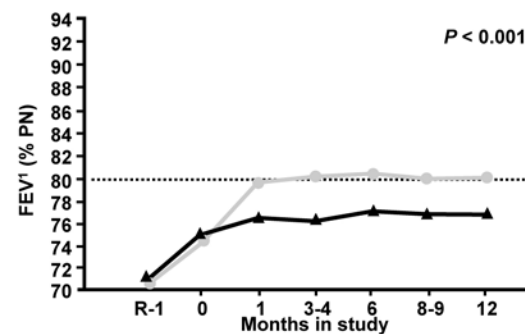
GINA Step 2



GINA Step 3

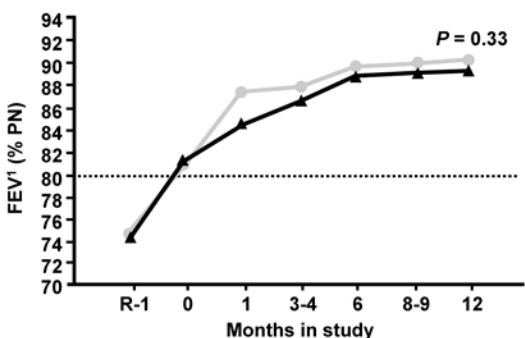


GINA Step 4

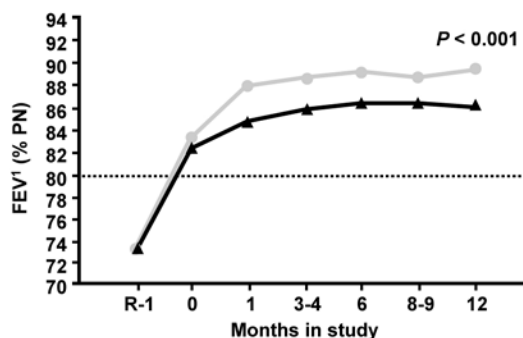


B) BUD/FORM maintenance and reliever therapy vs. same maintenance dose ICS/LABA + SABA

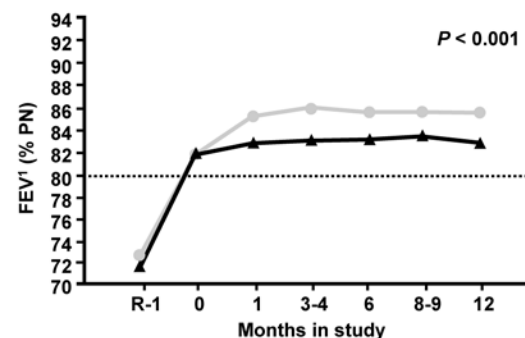
GINA Step 2



GINA Step 3

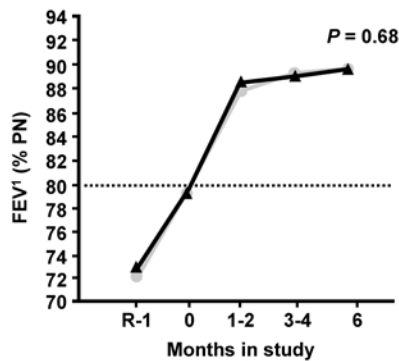


GINA Step 4

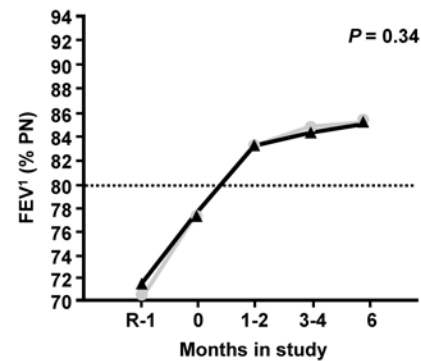


C) BUD/FORM maintenance and reliever therapy vs. higher maintenance dose ICS/LABA + SABA

GINA Step 3



GINA Step 4



● BUD/FORM maintenance and reliever therapy
▲ Comparator