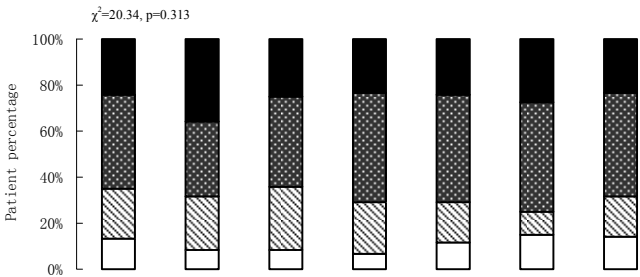
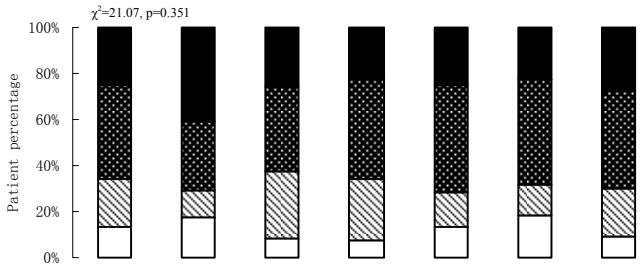


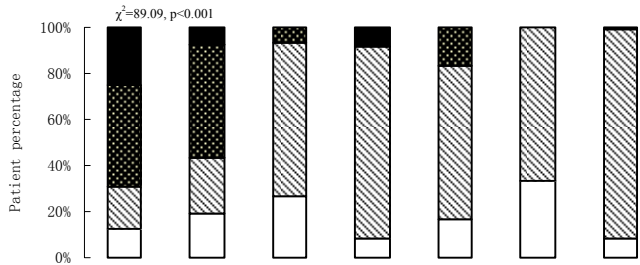
*D. pteronyssinus*



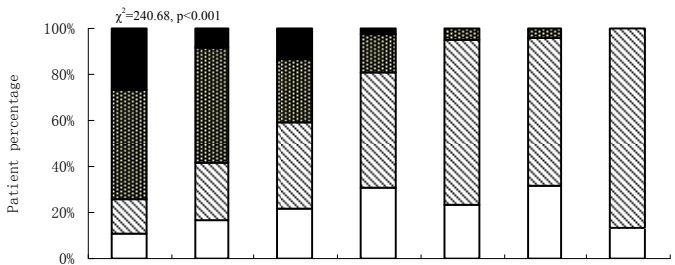
*D. farinae*



*Artemisia vulgaris*



*Ambrosia artemisifolia*



0-0.35    0.35-0.7    0.7-3.5    3.5-17.5    17.5-50    50-100    >100

Specific IgE (KU/L)

□ Mild intermittent

▨ Moderate-severe intermittent

▩ Mild persistent

■ Moderate-severe persistent