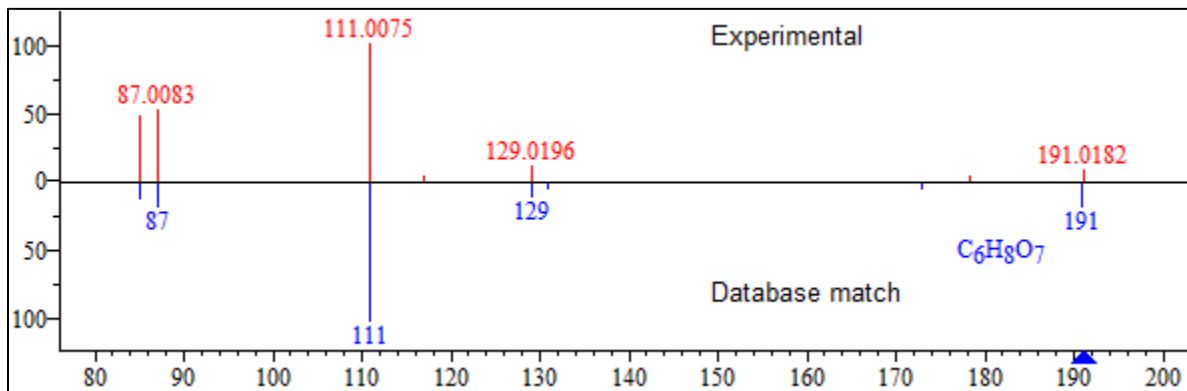
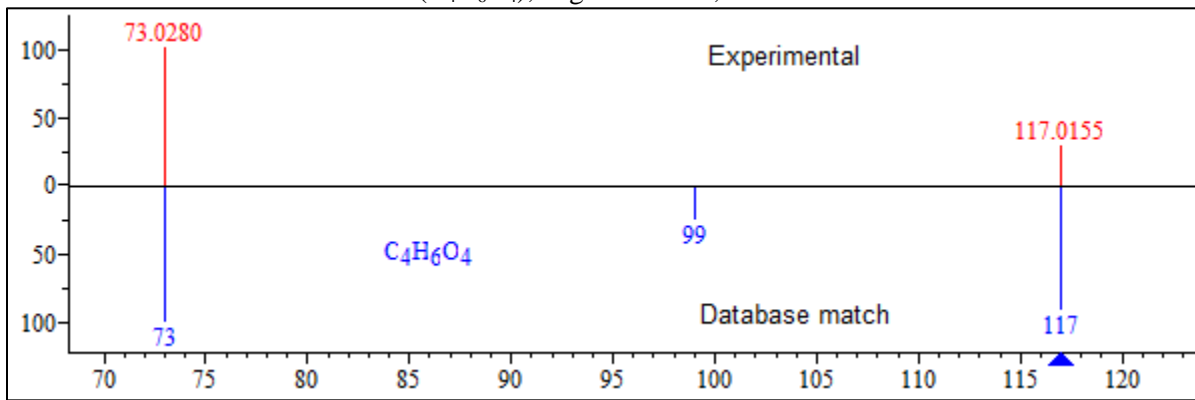


Additional file 5: Tandem MS fragmentation patterns for six EBC metabolites. The mass spectral fragment peaks in red indicate the experimental results. The peaks in blue indicate the database matches based on standards.

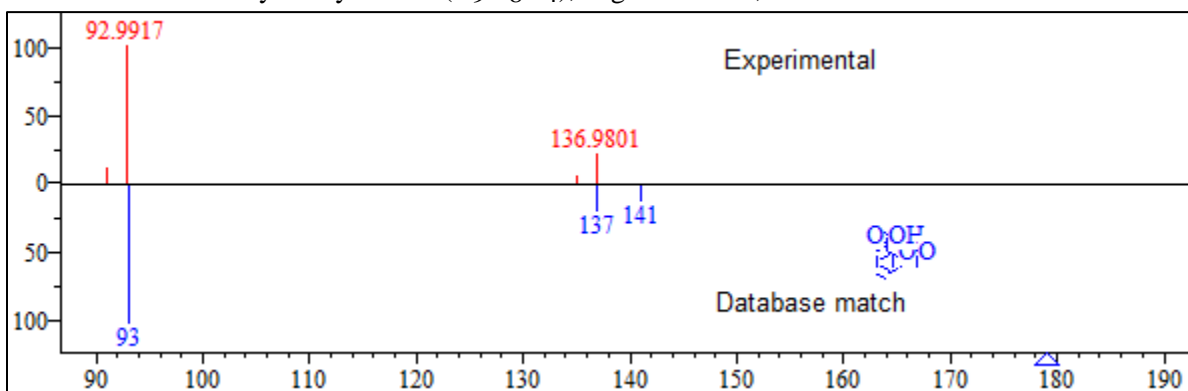
Citric acid ($C_6H_8O_7$), negative mode, RT = 1.693 minutes



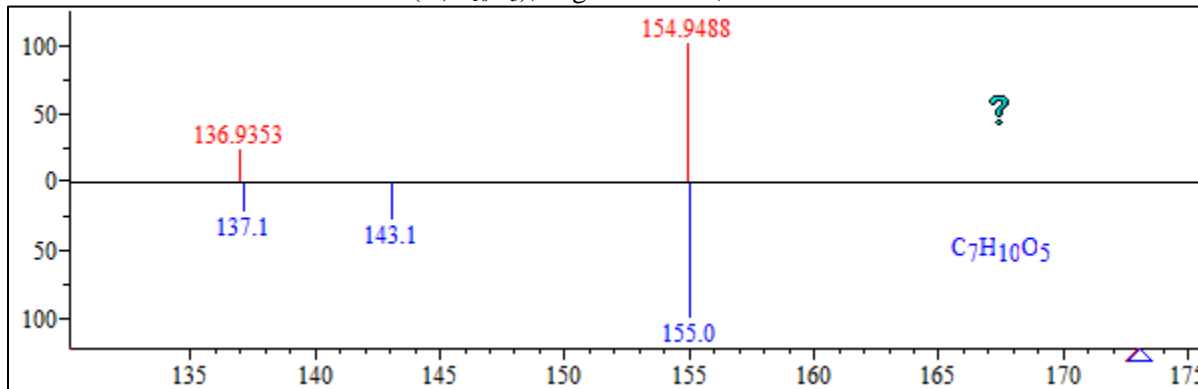
Succinic acid ($C_4H_6O_4$), negative mode, RT = 1.830 minutes



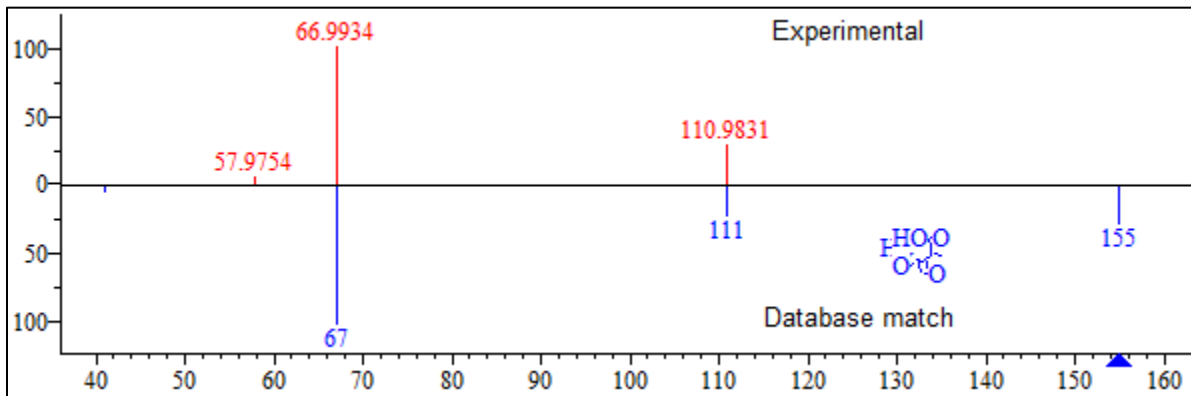
Acetylsalicylic acid ($C_9H_8O_4$), negative mode, RT = 6.957 minutes



Shikimic acid ($C_7H_{10}O_5$), negative mode, RT = 27.634 minutes



3,4-Furandicarboxylic acid (C₆H₄O₅), negative mode, RT = 31.702 minutes



4-Chloro-L-phenylalanine (C₉H₁₀ClNO₂), negative mode, RT = 31.518 minutes

