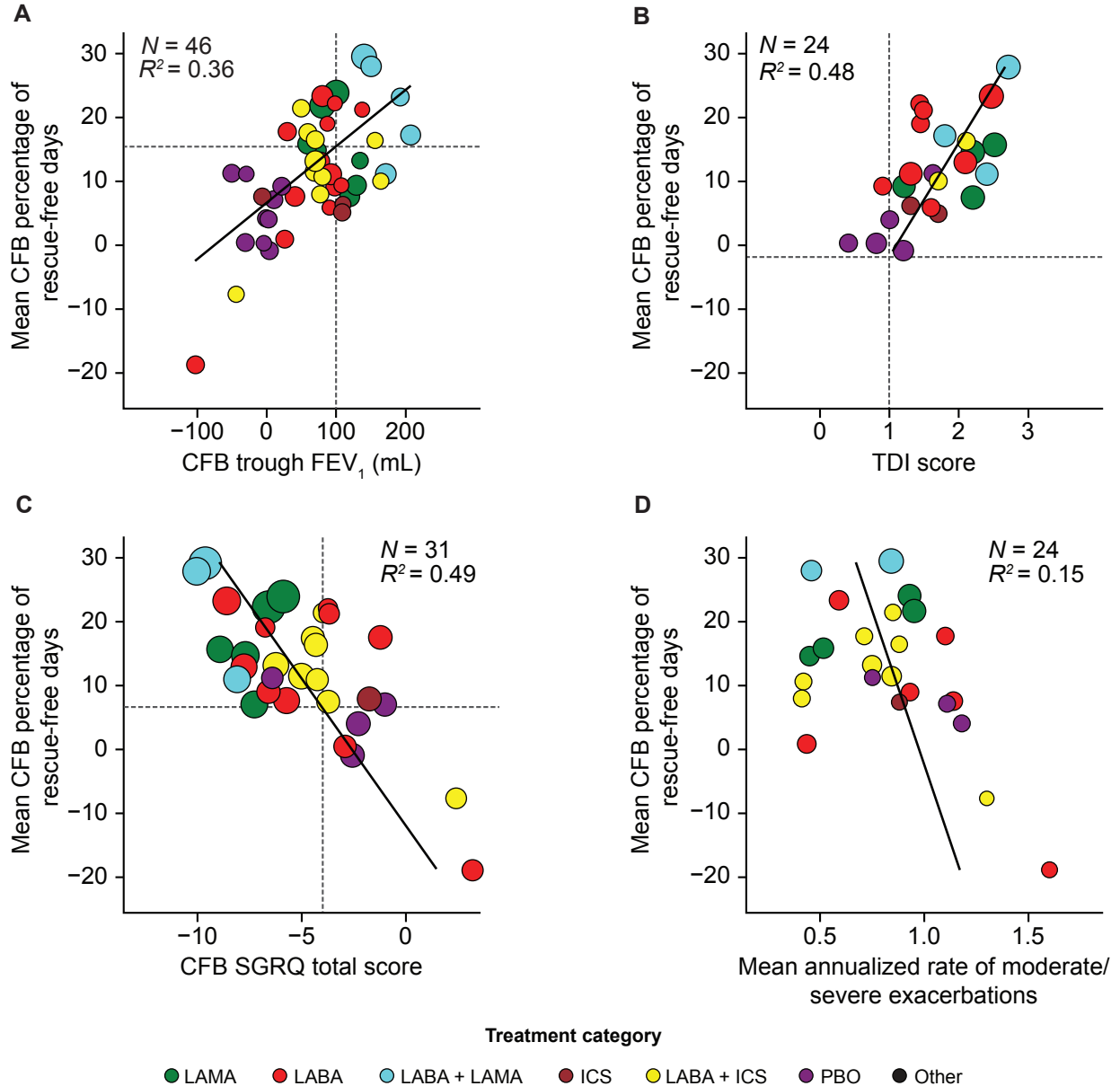


**Figure S1:** Weighted linear regression bubble plots for associations (study end) between percentage of rescue-free days and: A) CFB trough FEV<sub>1</sub>; B) TDI score; C) CFB SGRQ total score; D) mean annualized rate of exacerbations



CFB, change from baseline; FEV<sub>1</sub>, forced expiratory volume in one second; ICS, inhaled corticosteroid; LABA, long-acting  $\beta_2$ -agonist; LAMA, long-acting muscarinic antagonist; PBO, placebo; SGRQ, St George's Respiratory Questionnaire; TDI, Transition Dyspnea Index.