

Supplementary Figure S1

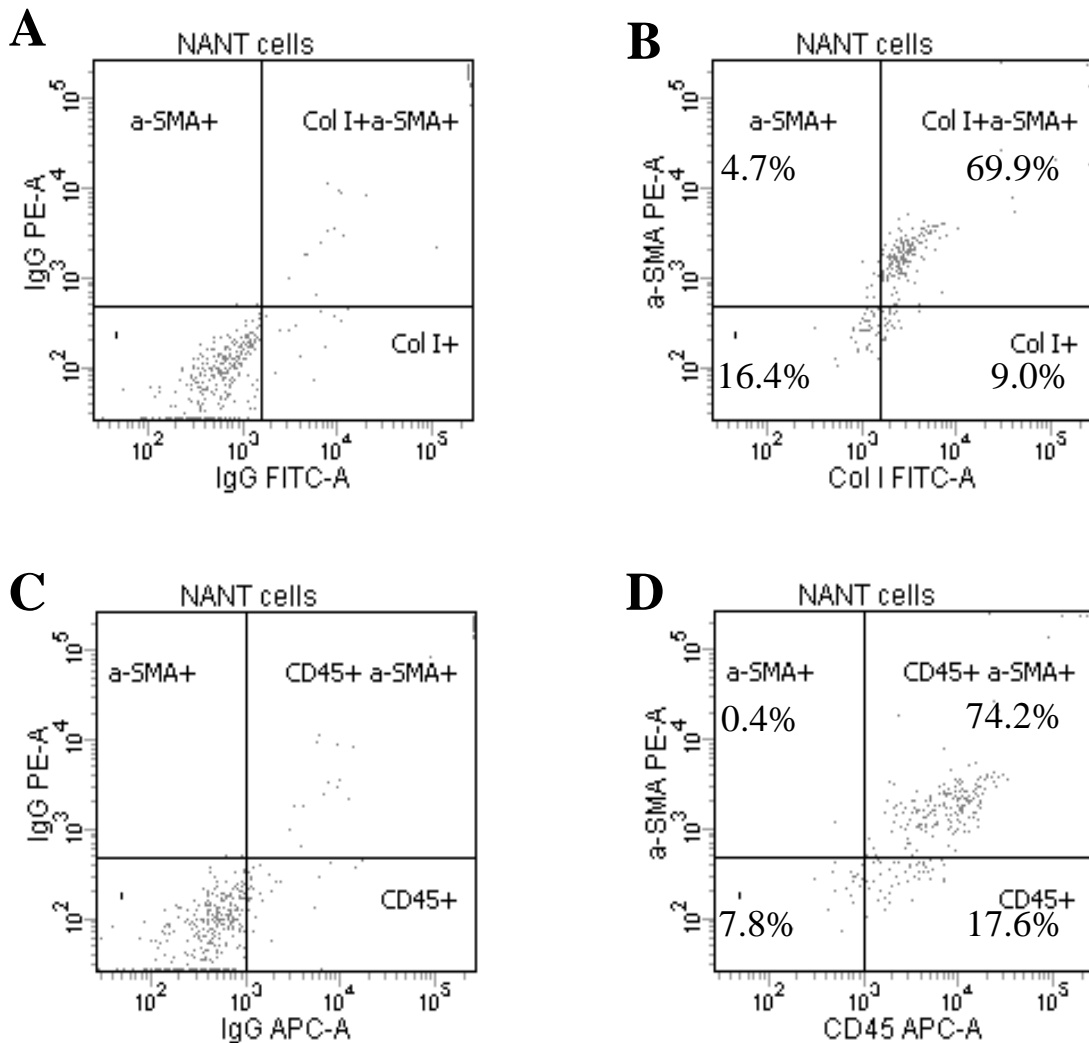


Figure S1: *The expression of collagen I and CD45 on α -smooth muscle actin-positive cells.* NANT cells from one healthy subject were harvested after 3 days in culture and stained with antibodies for collagen I (Col I), α - smooth muscle actin (SMA) and CD45 or their respective IgG isotype controls (**A** and **C**). The percentage of Col I+/ α -SMA+ (**B**) and CD45+/ α -SMA+ cells (**D**) was determined by flow cytometry.