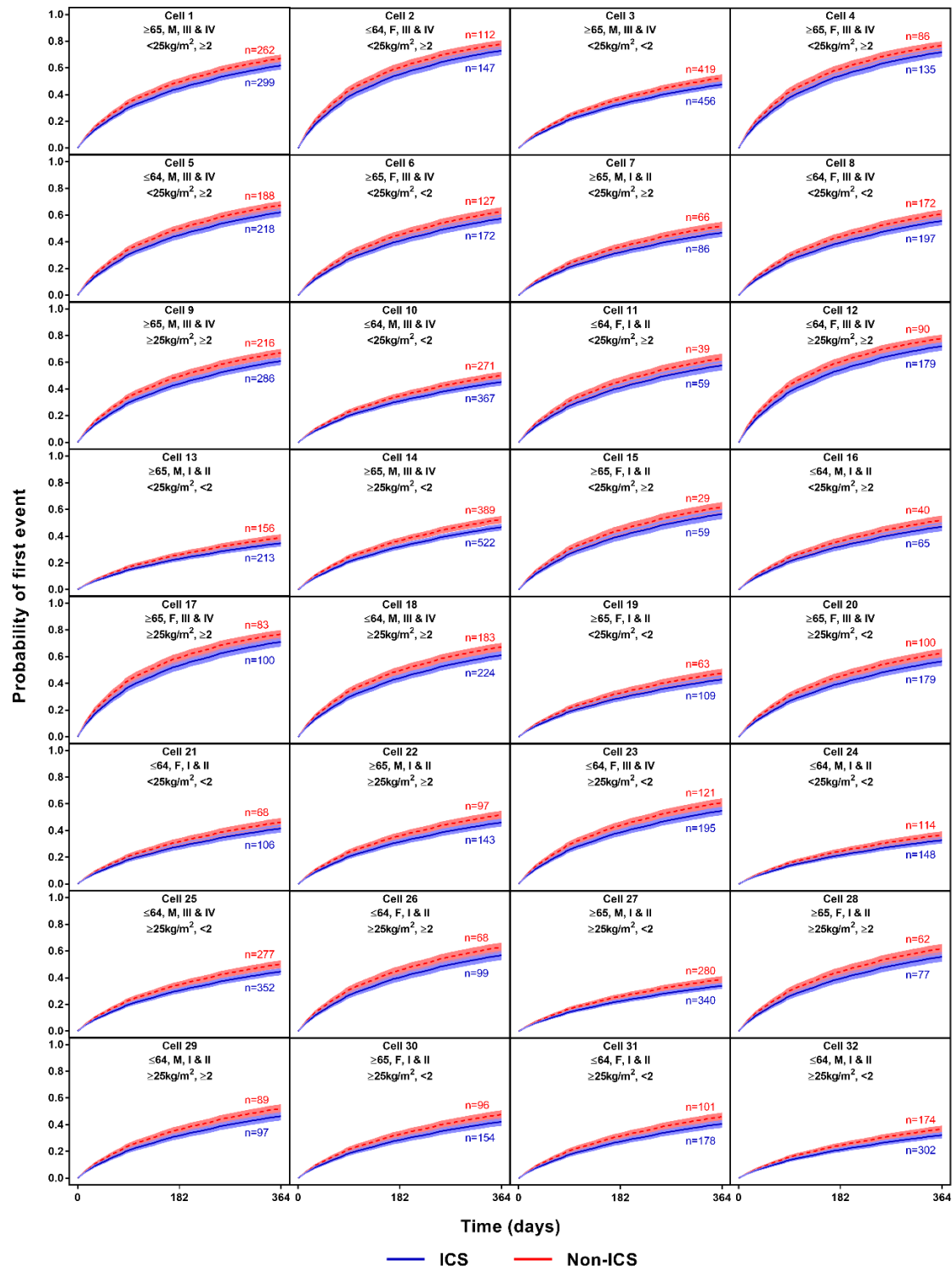


Additional file 4 Survival curves (95% CI bands) from selected pneumonia model showing probability of first exacerbation during year on study treatment



Cell header line 1: Age (years), gender, Global Initiative for Chronic Obstructive Lung Disease stage; Cell header line 2: Body mass index, number of exacerbations (<2, ≥2) in the prior year. Numbers of patients presented are subgroup numbers, patients without covariates did not contribute to the model. CI confidence interval, ICS inhaled corticosteroid