

Donor Characteristics\*

Sex, M/F	27/14
Age, y/o	30.88 (14.07)
Race, C/B/H	28/7/6
BMI, kg/m <sup>3</sup>	26.88 (6.74)

Data represents means (SD); n=41 donors. M, male; F, female;  
C, caucasian; B, black; H, Hispanic; BMI, body mass index

\* Donors died of head trauma or cardiovascular incident, including stroke

**Table S1: Donor demographics for cAMP and *pde4d* expression studies.** All cells were derived from subjects with no history of chronic disease.

Figure 1

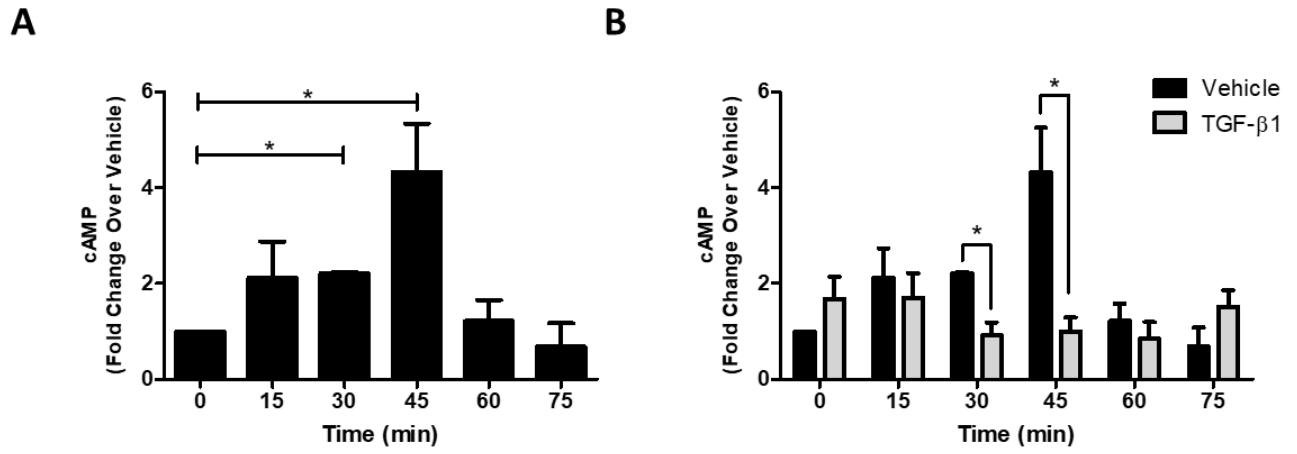


Figure 2

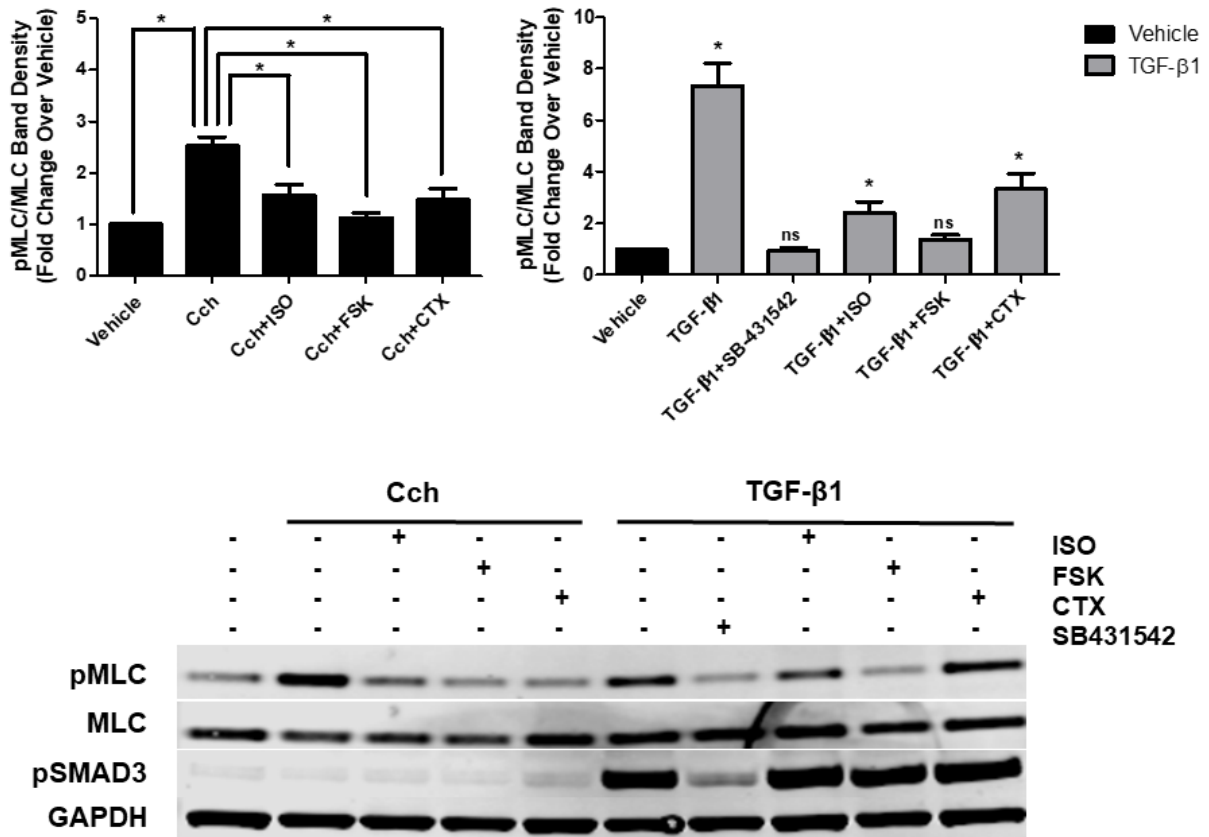


Figure 3

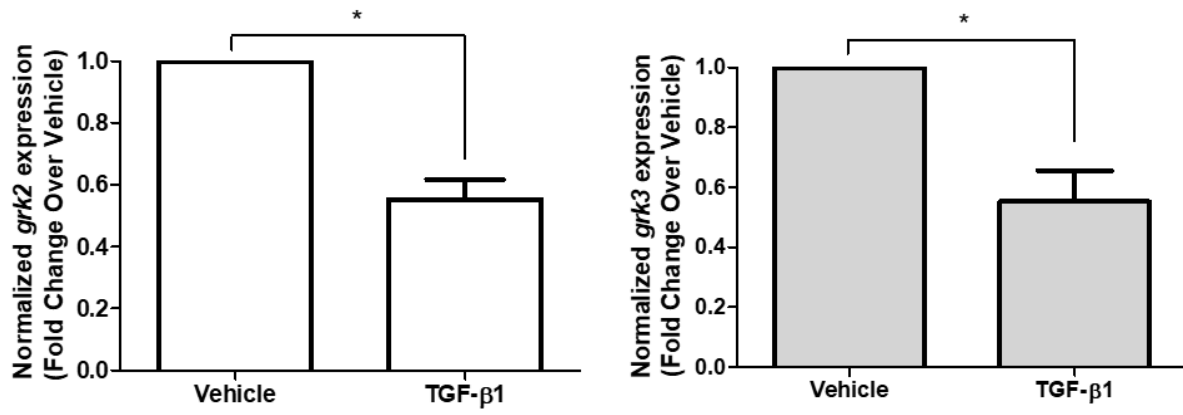


Figure 4

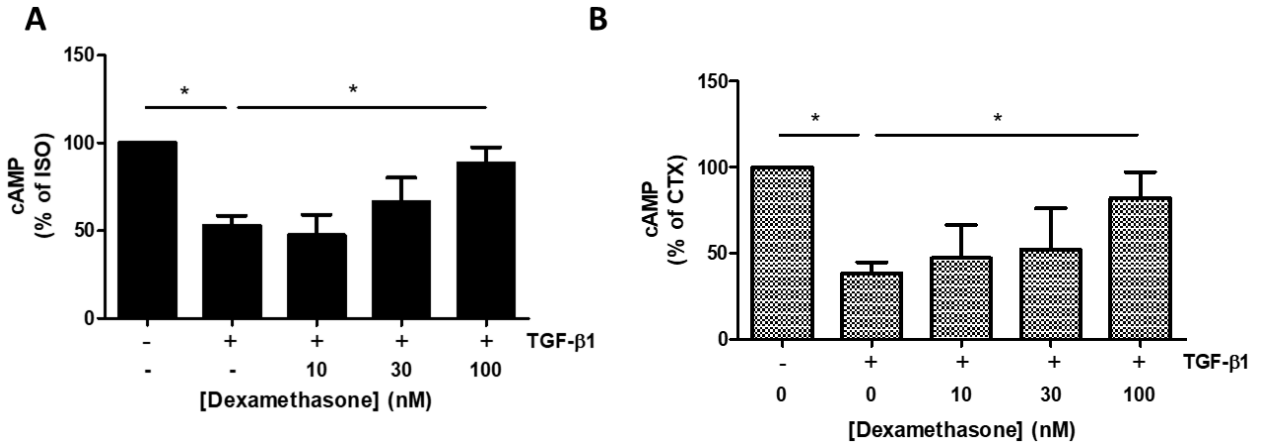


Figure 5

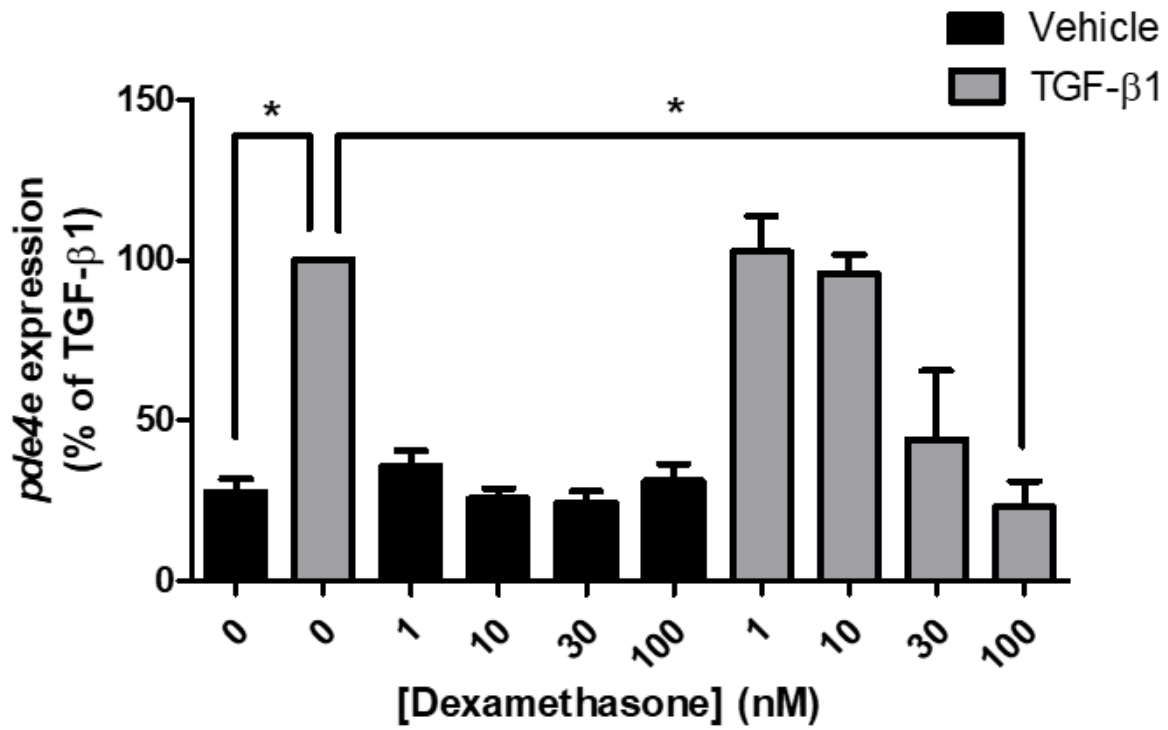


Figure 6

