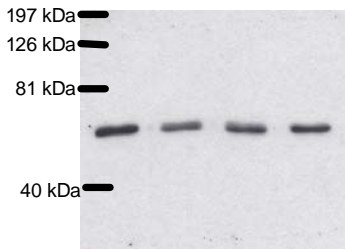
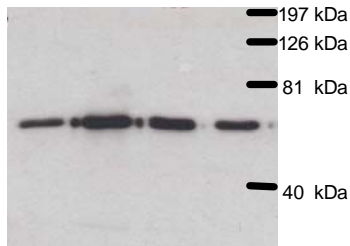


A**B**

Insulin (pmol/L)

0 170 1.7×10^{-4} 1.7×10^{-6} 0 170 1.7×10^{-4} 1.7×10^{-6} **C**

Insulin (pmol/L)

170 1.7×10^{-4} 1.7×10^{-6} 0170 1.7×10^{-4} 1.7×10^{-6}

Wortmannin (nmol/L)

← 1000 →

← 300 →