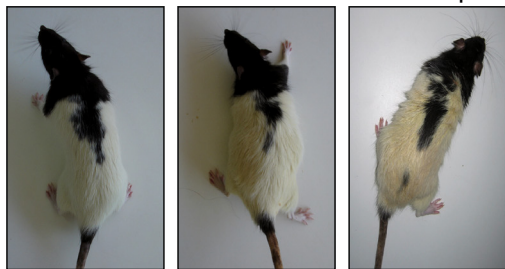


A

ZL

ZDF

ZDF+epl.



Plasma:

Aldosterone (pg/ml)	180±57.19	430±192.63*	816±154.49 ^{††}
Glucose (mg/dl)	194.55±38.2	666.66±102.61 ^{**}	697.51±89.8
Insulin (ng/mL)	1.08±0.11	1.83±0.24*	2.00±0.28
Ch (mg/dl)	61.11±8.35	187.16±14.13 ^{**}	143.4±12.26 ^{††}
TAG (mg/dl)	39.66±8.36	397.66±166.87 ^{**}	111.7±33.21 ^{††}
FFA (mM)	1.61±1.15	5.17±1.19 ^{**}	0.73±0.3 ^{††}
HDL (mg/dl)	19.77±2.33	76.5±10.36 ^{**}	73.2±12.26
Ch non-HDL (mg/dl)	41.33±6.53	112.33±14.05 ^{**}	111.75±32.8

Weight (g)

431.9±26.73

341.14±38.71^{**}

338.25±70.26

HW/FL

0.41±0.03

0.55±0.06*

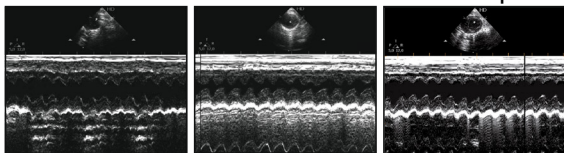
0.47±0.01[†]**B**

ZL

ZDF

ZDF+epl.

Echo-Doppler



LVPW (cm)	0.21±0.036	0.23±0.034	0.22±0.03
IVS (cm)	0.18±0.029	0.24±0.015 ^{**}	0.2±0.032 [†]
LVDD (cm)	0.71±0.10	0.51±0.115*	0.5±0.078
LVSD (cm)	0.32±0.097	0.21±0.076*	0.22±0.061
EF (Teich)	0.88±0.07	0.9±0.07	0.85±0.09
Dec. T (s)	0.036±0.001	0.04±0.003*	0.031±0.005 [†]
E/A ratio	1.22±0.03	1.05±0.03*	1.18±0.02 [†]

C

ANP/18s mRNA expression (n-fold)

