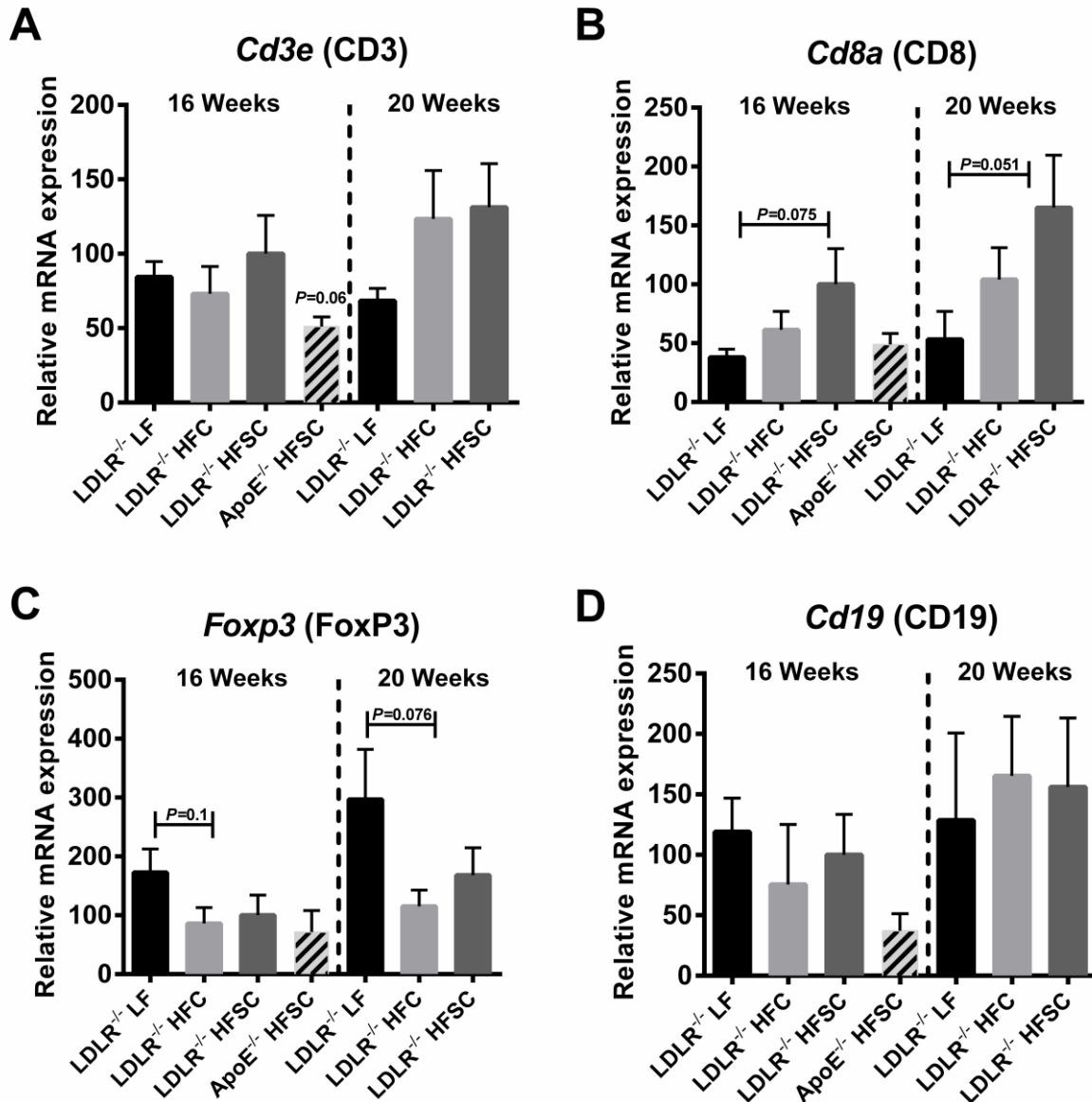


Additional Figure 2



Additional Figure 2: LDLR^{-/-} mice were fed HFSC, HFC or LF for 16 weeks or 20 weeks ($n = 6$ animals per group). ApoE^{-/-} mice were fed HFSC for 16 weeks ($n = 8$ animals per group). Gonadal adipose tissue expression of the marker genes for pan-T cells (*Cd3e*) (A), cytotoxic (*Cd8a*) (B), and regulatory T cells (*Foxp3*) (C) as well as B cells (*Cd19*) (D) was analyzed by real-time RT-PCR. For statistical analysis LDLR^{-/-} mice fed HFSC or LF were compared with HFC-fed LDLR^{-/-} mice. In addition, LDLR^{-/-} and ApoE^{-/-} mice both fed HFSC were compared. All data represent mean \pm SEM.