

SUPPLEMENTAL MATERIAL

Ipragliflozin-induced adipose expansion inhibits cuff-induced vascular remodeling in mice

Kentaro Mori, Kyoichiro Tsuchiya, Suguru Nakamura, Yasutaka Miyachi,
Kumiko Shiba, Yoshihiro Ogawa, Kenichiro Kitamura

SUPPLEMENTAL FIGURE LEGENDS

Supplemental Figure 1. Plasma lipid profile, and histology and gene expression in thoracic PVAT of Ipra-treated WD-fed mice.

(A) Epi weight to body weight ratio of Ipra-treated WD-fed mice. (B) Plasma total cholesterol, triglyceride and non-esterified fatty-acid (NEFA) levels after 10 weeks of Ipra treatment. (C) Hematoxylin and eosin (HE) staining, and (D) gene expression levels in thoracic PVAT 10 weeks after Ipra treatment. NEFA, Non-esterified Fatty Acid. Original magnification, $\times 200$. * $p < 0.05$, ** $p < 0.01$ vs SD. $n = 6-8$.

Supplemental Figure 2. Concentration of FABP4 in conditioned medium of Epi and plasma of Ipra-treated WD-fed mice.

Concentration of FABP4 in (A) conditioned medium (CM) of Epi and abdominal PVAT, and (B) plasma of SD or Ipra-treated WD-fed mice. ** $p < 0.01$ vs SD, # $p < 0.05$, ## $p < 0.01$ vs WD. $n = 6-8$.

Supplemental Figure 3. Implanted adipose tissue 4 weeks after surgery.

A representative picture of implanted Epi 4 weeks after surgery.

Supplemental Table. List of primers.

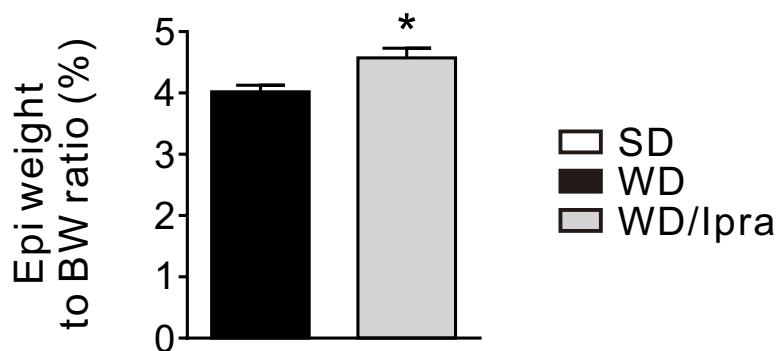
<i>Fabp4</i>	Fw	AGACGACAGGAAGGTGAAGA
	Rv	TAACACATTCCACCACCAGC
<i>Nampt</i>	Fw	CAGTGGCCACAAATTCCAGA
	Rv	CCTATGCCAGCAGTCTCTTG
<i>Angptl2</i>	Fw	CACCTACAACCGCATCATCA
	Rv	TCCATGGACCTGATGGCTTA
<i>Pdgfb</i>	Fw	CTTCCTCTCTGCTGCTACCT
	Rv	AGCCCCATCTTCATCTACGG
<i>Ccl2</i>	Fw	CCACTCACCTGCTGCTACTCAT
	Rv	TGGTGATCCTCTTGTAGCTCTCC
<i>Emr1</i>	Fw	CTTTGGCTATGGGCTTCCAGTC
	Rv	GCAAGGAGGACAGAGTTTATCGT
<i>Ccr2</i>	Fw	ACAAATCAAAGGAAATGGAAGAC
	Rv	TGCCGTGGATGAACTGAGG
<i>Col1a1</i>	Fw	CCTCAGGGTATTGCTGGACAAC
	Rv	ACCACTTGATCCAGAAGGACCTT
<i>Col1a2</i>	Fw	TTGCAATCGGGATCAGTACGA

	Rv	CACGTGGTCCTCTGTCTCCAG
<i>Fn1</i>	Fw	GCTGAAAGGACCCAATGTCT
	Rv	AGAATCCATCCCCACAGGAA
<i>Lep</i>	Fw	TCCAGGATGACACCAAACCC
	Rv	TGAAGTCCAAGCCAGTGACC
<i>36b4</i>	Fw	GGCCCTGCACTCTCGCTTTC
	Rv	TGCCAGGACGCGCTTGT

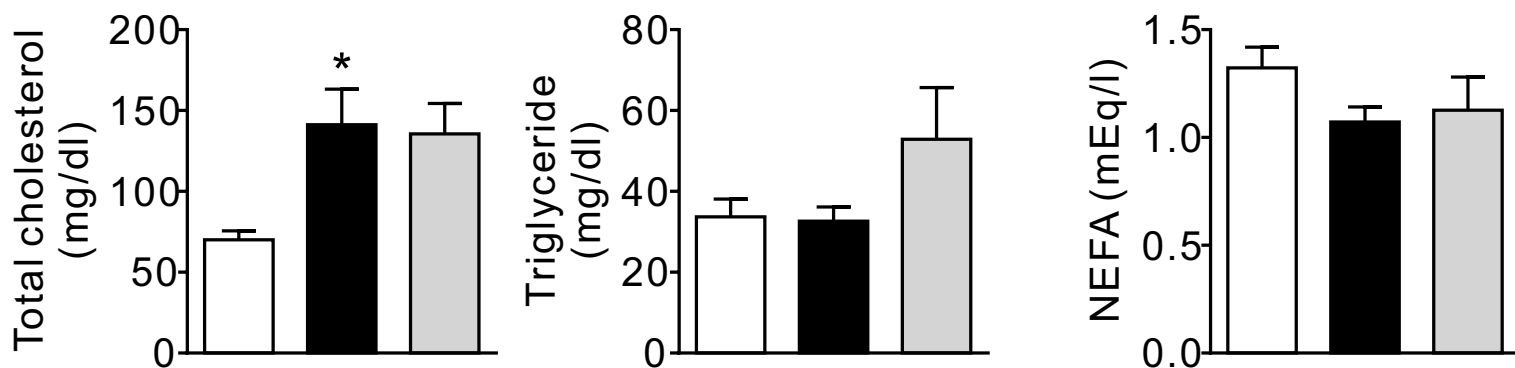
Fw: forward primer, Rv: reverse primer

Supplemental Figure 1

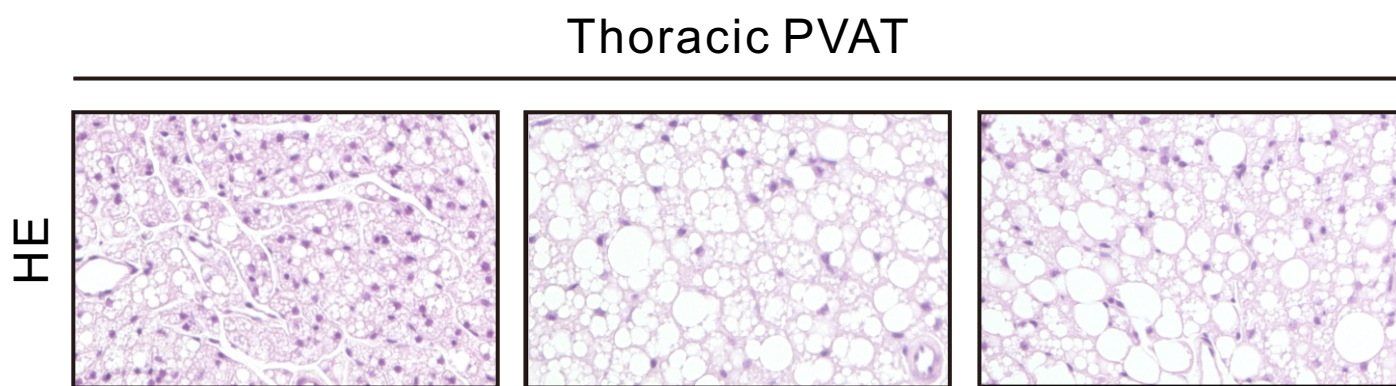
A



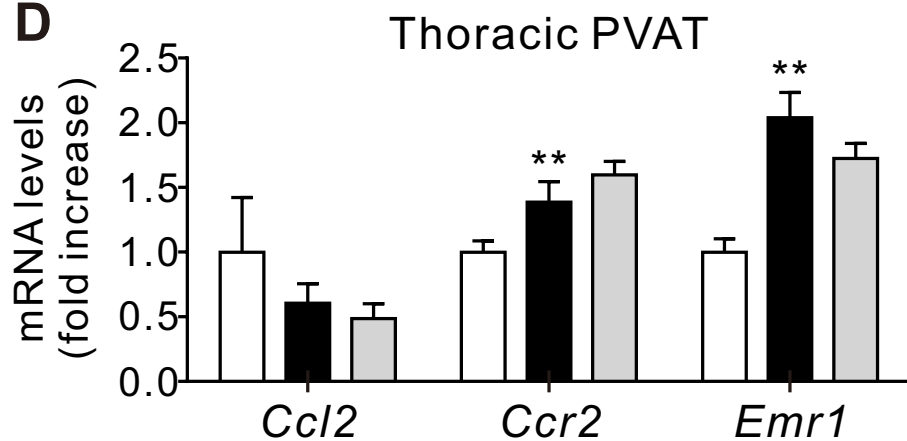
B



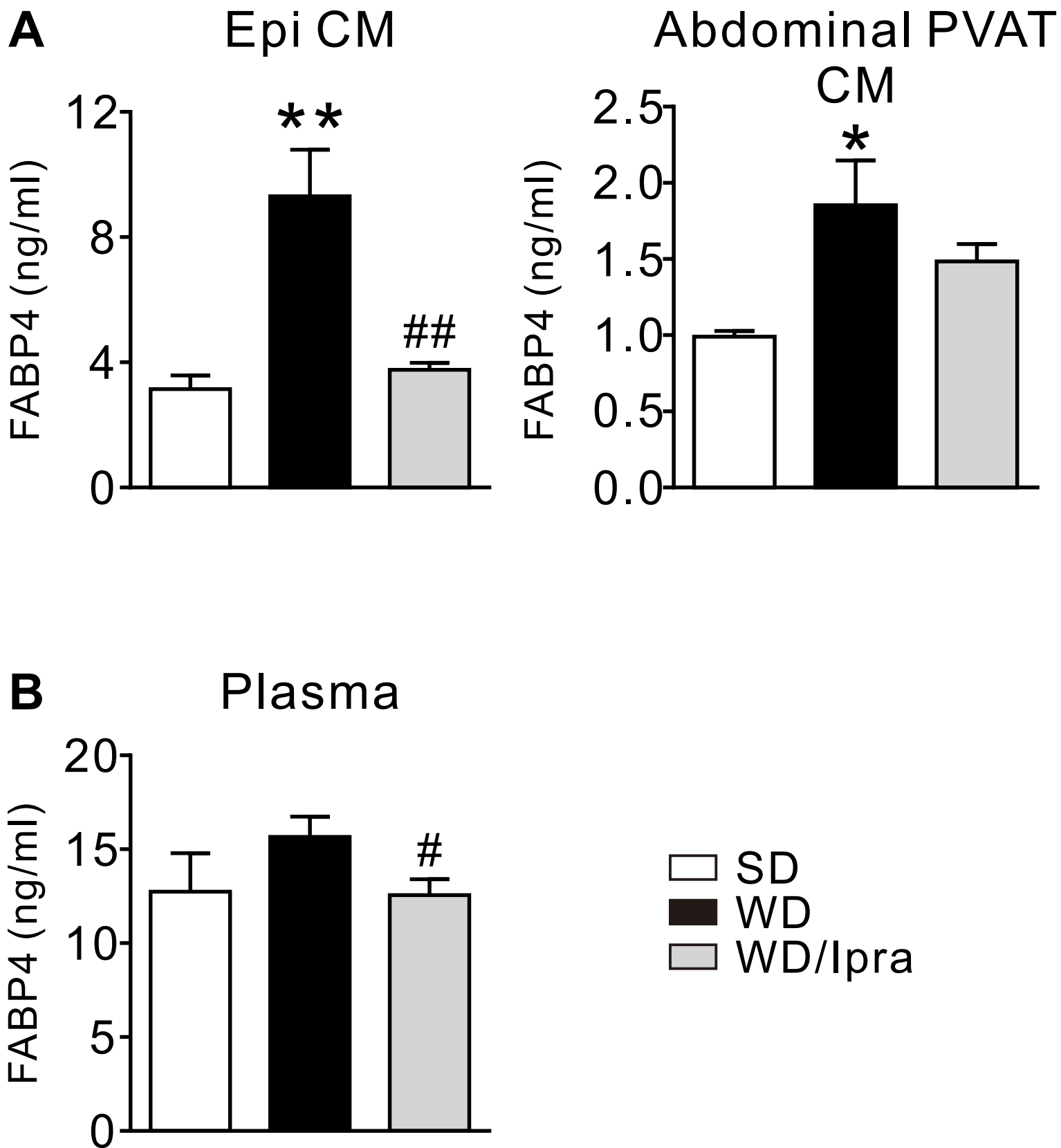
C



D



Supplemental Figure 2



Supplemental Figure 3

