

Figure.S3A

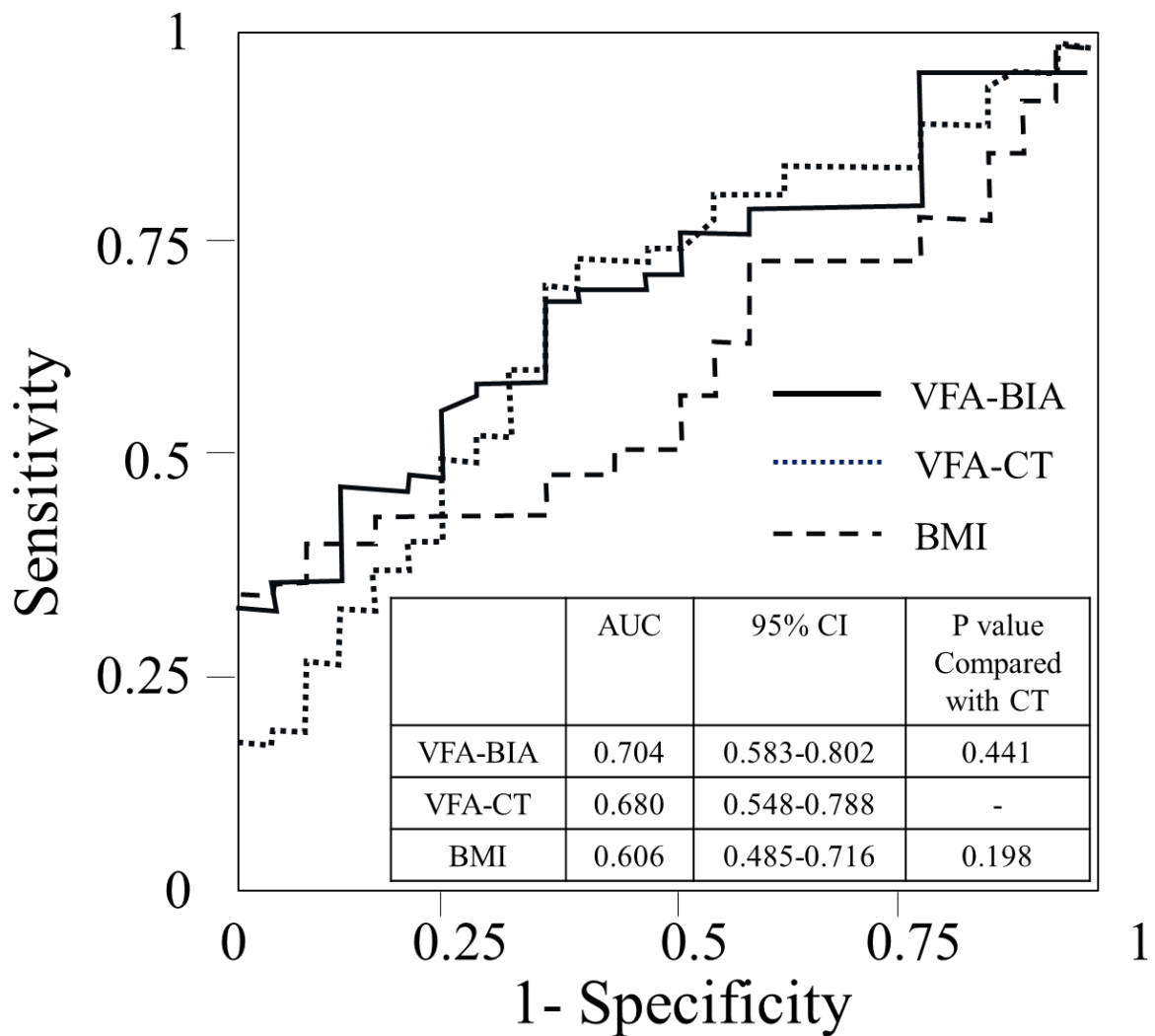


Figure.S3A The ROC for identifying the presence of hypertension. Hypertension was defined as SBP \geq 140 mmHg and/or DBP \geq 90 mmHg or under treatment. The curves are for the VFA -BIA (bold line), the VFA-CT (dotted line), and BMI (broken line).

Figure.S3B

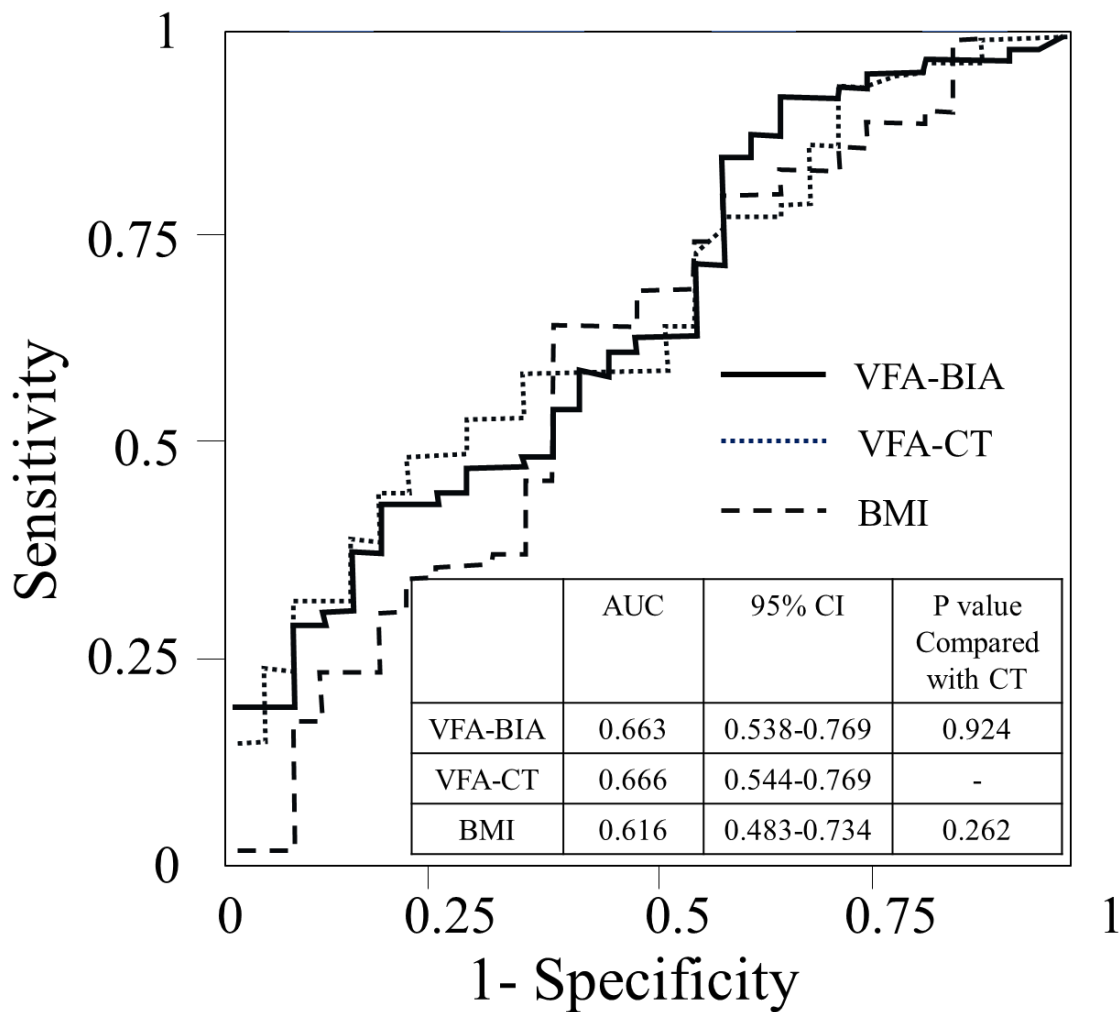


Figure.S3B The ROC for identifying the presence of dyslipidemia. Dyslipidemia was defined HDL-C < 40 mg/dL and/or triglycerides \geq 150 mg/dL or under treatment. The curves are for the VFA -BIA (bold line), the VFA-CT (dotted line), and BMI (broken line).