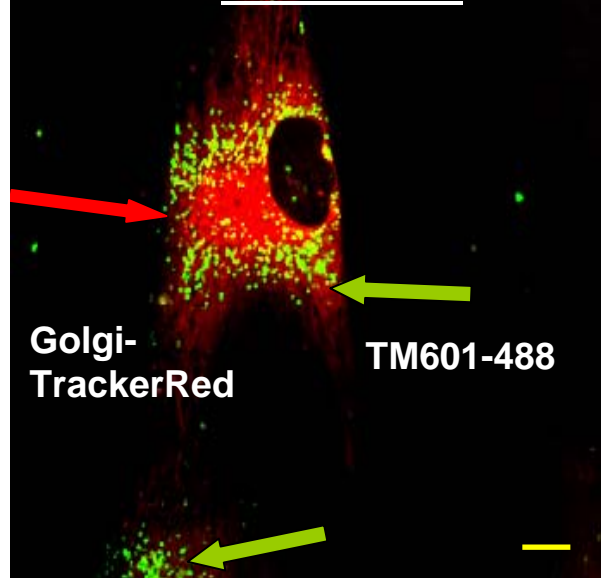


ANHDF normal
fibroblast cell**B**U373 glioma cell

Golgi-TrackerRed

TM601-488

This panel shows a U373 glioma cell with Golgi-TrackerRed (red) and TM601-488 (green) staining. The Golgi apparatus is concentrated in a perinuclear region, and TM601-488 is also concentrated in a perinuclear region. A red arrow points to the Golgi-TrackerRed signal, and a green arrow points to the TM601-488 signal. A yellow scale bar is located in the bottom right corner.

CA549 lung carcinoma cell

Golgi-TrackerRed

TM601-488

This panel shows an A549 lung carcinoma cell with Golgi-TrackerRed (red) and TM601-488 (green) staining. The Golgi apparatus is concentrated in a perinuclear region, and TM601-488 is also concentrated in a perinuclear region. A red arrow points to the Golgi-TrackerRed signal, and a green arrow points to the TM601-488 signal. A yellow scale bar is located in the bottom right corner.