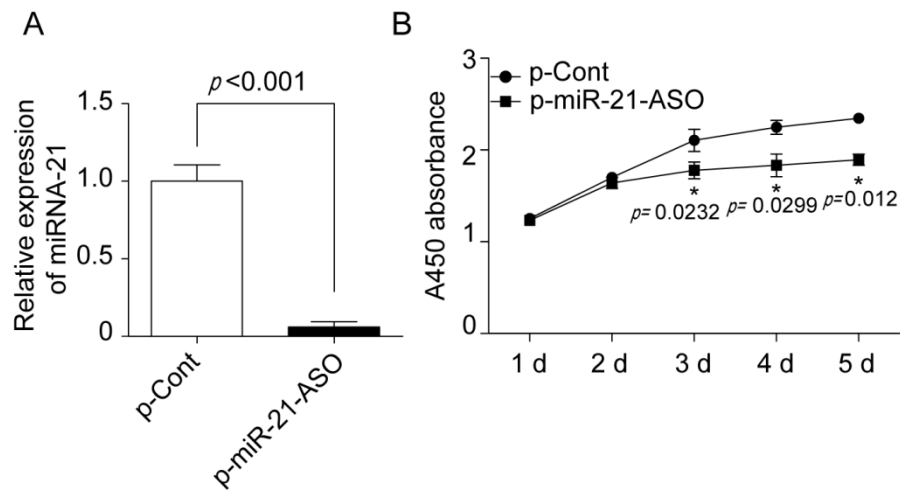


Supplementary data figure 2



Supplementary data figure 2. The effect of miR-21 ASO on the growth of human colon carcinoma cell line SW620 cells in vitro. Human colon carcinoma cell line SW620 cells were transiently transfected with p-miR-21-ASO or p-Cont (5ug). (A) 48h later, the relative expression of miR-21 was analyzed by real-time PCR assay. (B) The growth of cells was determined by CCK-8 assay at indicated tie point. One representative of three experiments is shown. * $p < 0.05$.