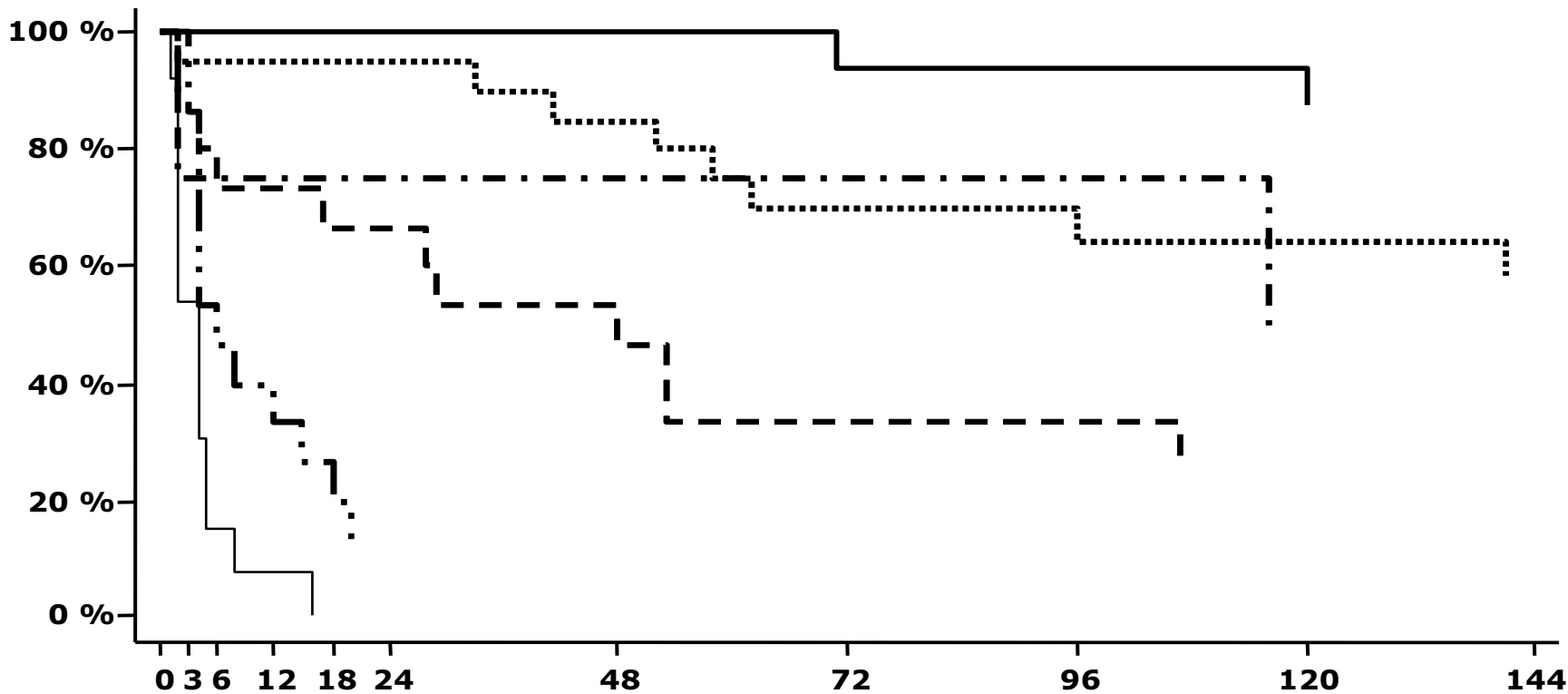


# Survival rate (%)



Time from intubation to death or survival (hrs)

- Children intubated for deep coma (n=16)
- Children intubated for status epilepticus or decorticate rigidity (n=20)
- Children intubated for decerebrate rigidity (n=15)
- Children intubated for acute lung injury (n=4)
- Children intubated for shock (n=15)
- Children intubated for cardiac arrest (n=13)