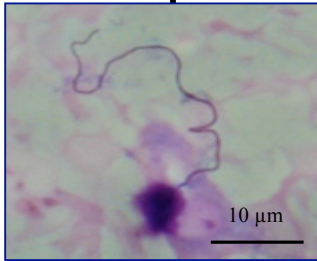
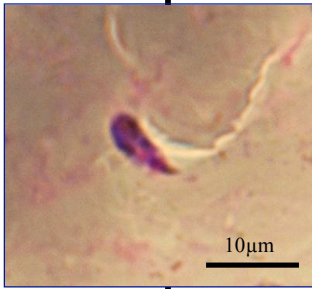


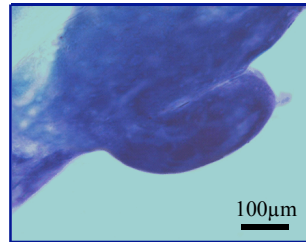
The ingested blood contains 2 to 3 gametocytes (♀ & ♂) per ml



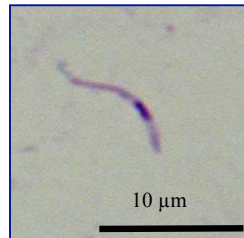
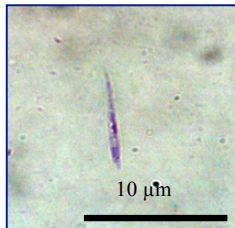
Exflagellation commences between 1 and 2 minutes after the blood meal



Ookinete development occurs in the lumen of the midgut before penetration of the epithelium at an average of 20 hours post-infection



Development of oocysts in the basal midgut occurs between 8 and 14 days post-infection



Sporozoites appear in the salivary glands on average 15 to 16 days post-infection

Sporozoites are found in haemolymph and salivary glands simultaneously