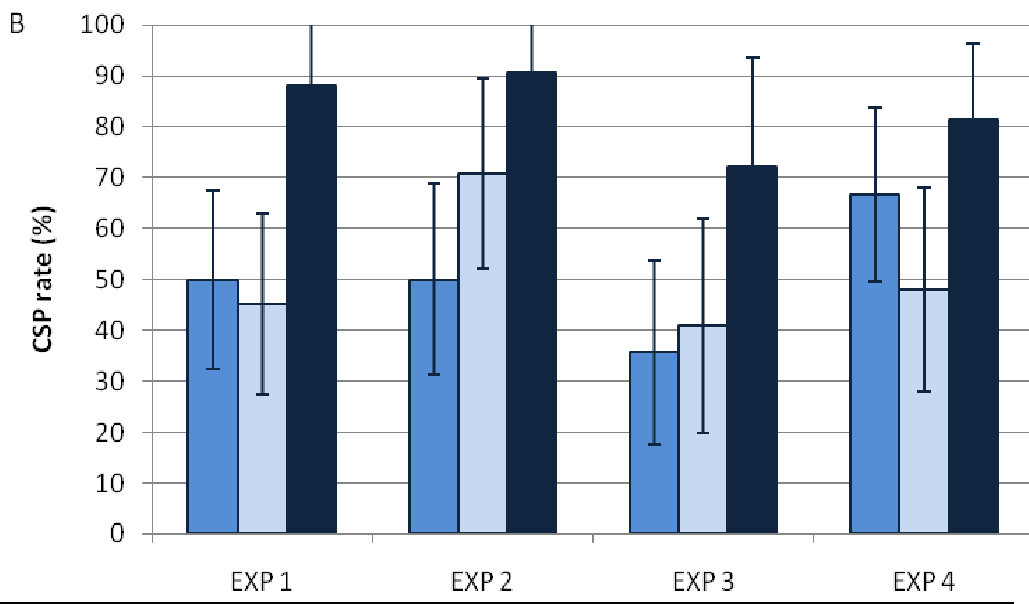


■ *An. arabiensis*
 ■ *An. gambiae M*
 ■ *An. gambiae S*

Nb. of studied mosquitoes	50	50	48	47	43	36	48	50	42	50	49	46
Nb. of positive mosquitoes	32	36	42	30	33	34	12	18	22	34	24	38
Chi ² and P value	7.3 (0.026)			10.8 (0.005)			7.2 (0.027)			12.1 (0.002)		



■ *An. arabiensis*
 ■ *An. gambiae M*
 ■ *An. gambiae S*

Nb. of studied mosquitoes	32	31	25	28	24	21	28	22	18	30	25	27
Nb. of positive mosquitoes	16	14	22	14	17	19	10	9	13	20	12	22
Chi ² and P value	12.2 (0.002)			9.2 (0.01)			6.4 (0.04)			6.5 (0.04)		