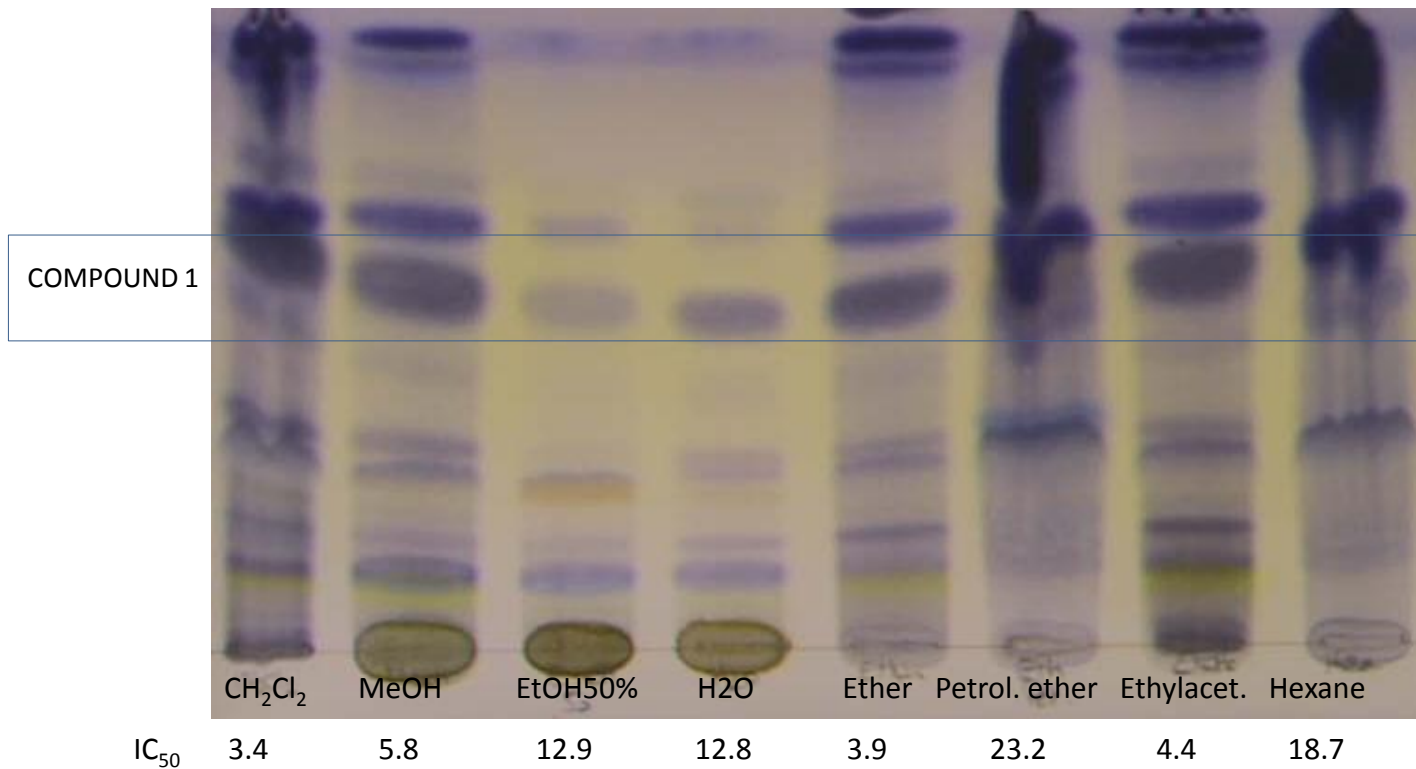


TLC analysis of *D. tomentosa* extracts tested *in vitro* for antiplasmodial activity



IC₅₀ in µg/ml (*P. falciparum* 3D7)

Mobile phase : CH₂Cl₂ - MeOH (95:5)

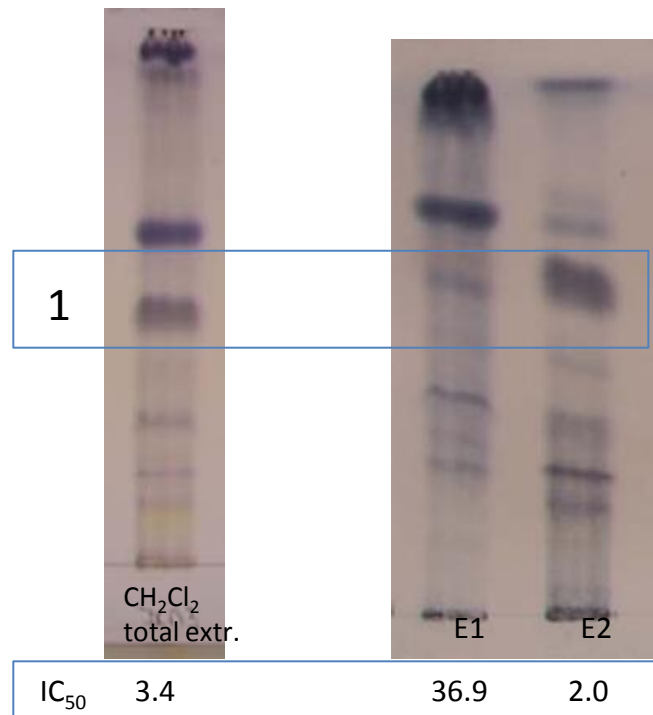
Revealed using sulphuric vanillin reagent (see Materials and methods)

Bioguided fractionation of *D. tomentosa*

IC₅₀ in µg/ml (*P. falciparum* 3D7)

Right : TLC

Extracts (CH₂Cl₂ total crude extract, E1 and E2 (subsequent hexane and CH₂Cl₂ extracts, in this order respectively)



Below: TLC

Fractions collected from preparative HPLC (E2)

