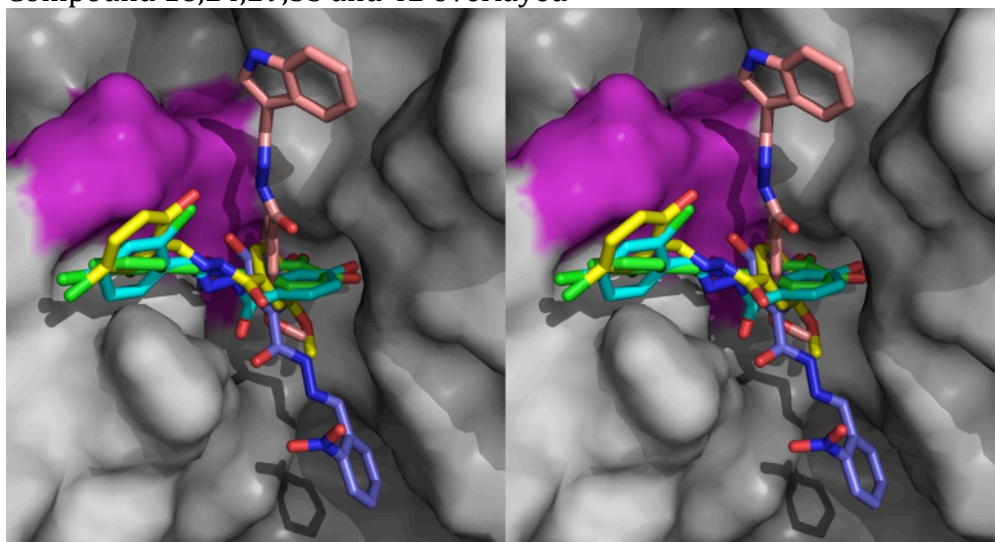
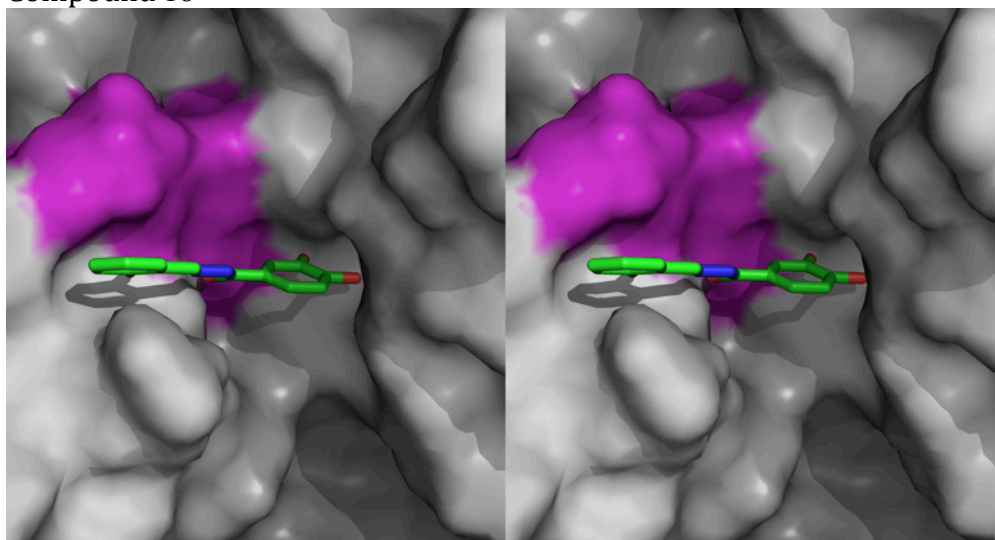


Additional file 5: Stereo figures of selected VLS hit poses. Stereo figures were prepared in the same orientation of some selected VLS hits docked to the coordinates of 2PC4 using the OpenEye software Fred. The surface rendering indicates the TRAP peptide in magenta, while the remaining of aldolase is kept grey, docked ligands are represented in sticks with the following color scheme: Compound 18 green, compound 24 cyan, compound 29 blue, compound 33 salmon and compound 42 yellow.

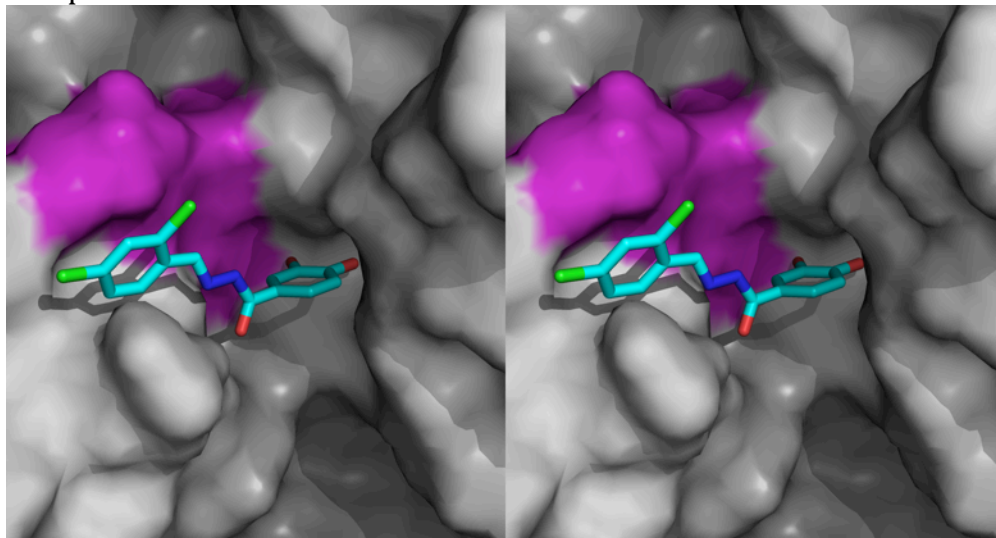
Compound 18,24,29,33 and 42 overlaid



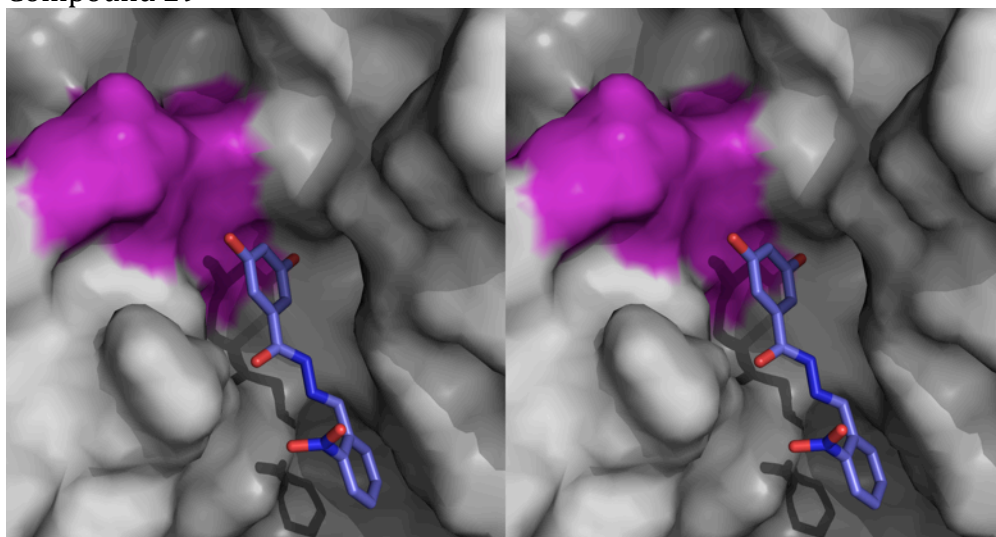
Compound 18



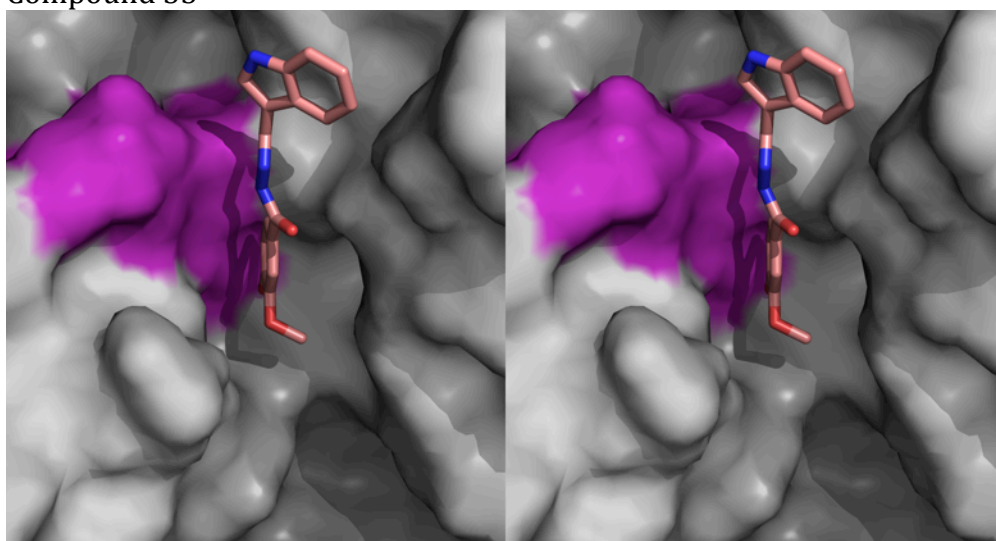
Compound 24



Compound 29



Compound 33



Compound 42

