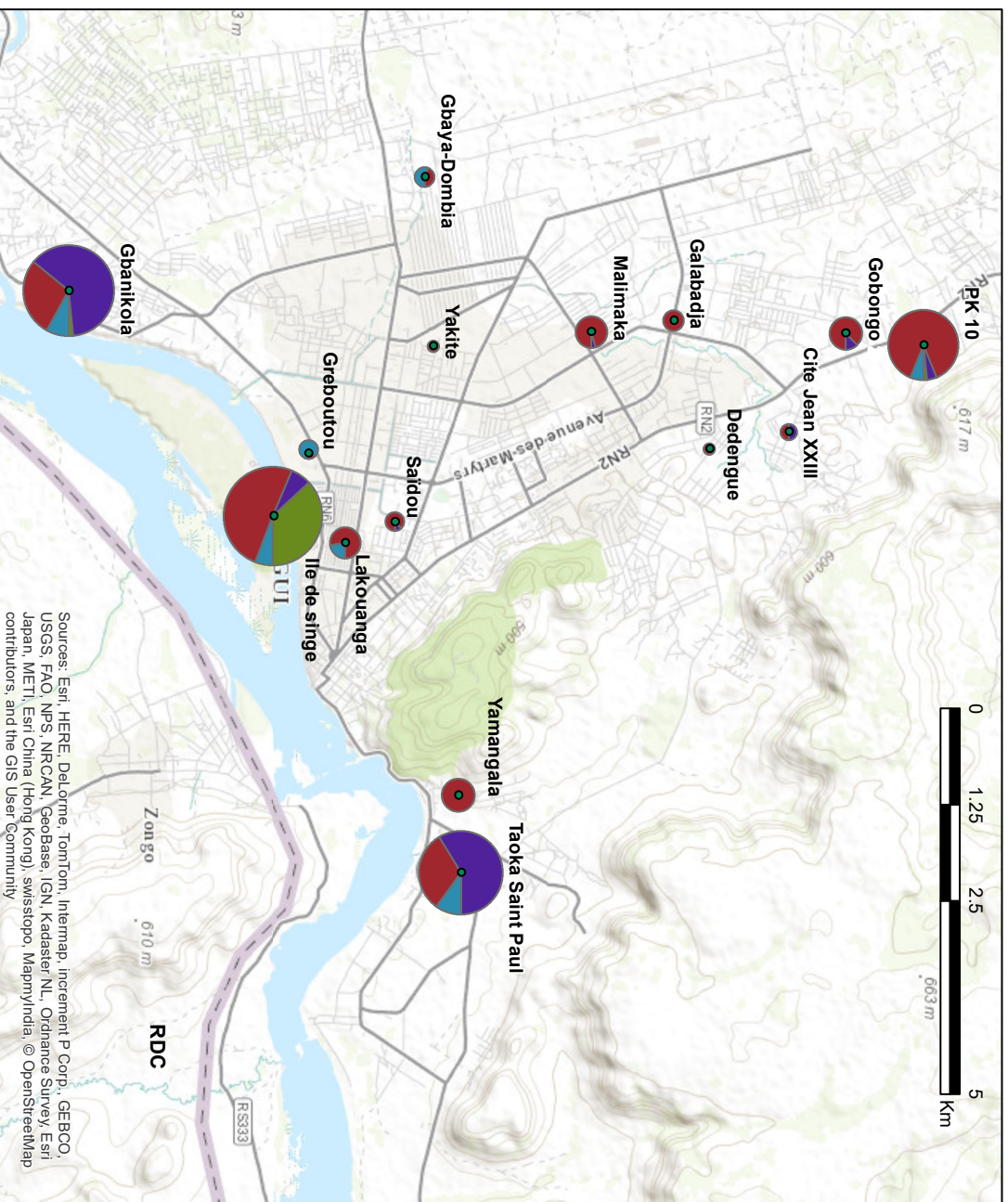


# Additional File 1: Predominant anopheline species captured in 15 districts of Bangui by Human Landing Catch (September-October 2013)



Sources: Esri, HERE, DeLorme, TomTom, Intermap, increment P Corp., GEBCO, USGS, FAO, NPS, NRCAN, GeoBase, IGN, Kadaster NL, Ordnance Survey, Esri, Japan, METI, Esri China (Hong Kong), swisstopo, MapmyIndia, © OpenStreetMap contributors, and the GIS User Community

- An. coustani*
- An. funestus*
- An. gambiae* sister taxa
- An. natalensis*

