

Figure 1: Head-to-head comparison of AQSP=ref and ARLM=control

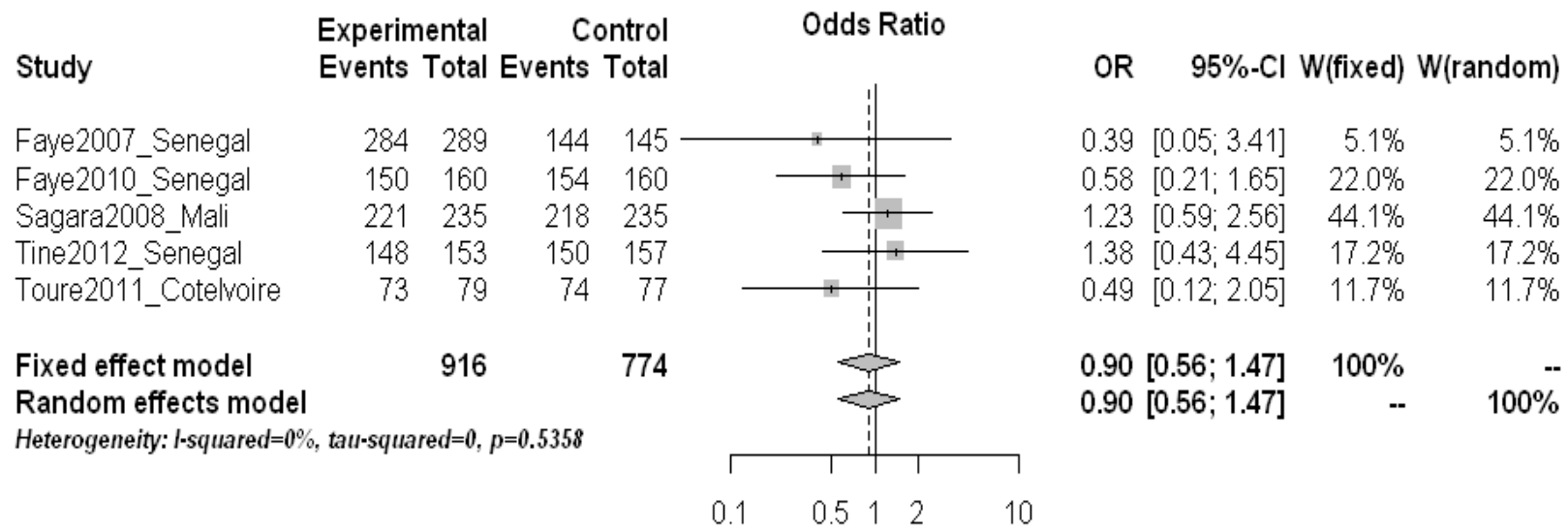


Figure 2: Head-to-head comparison of ARLM=ref and ASMQ=control

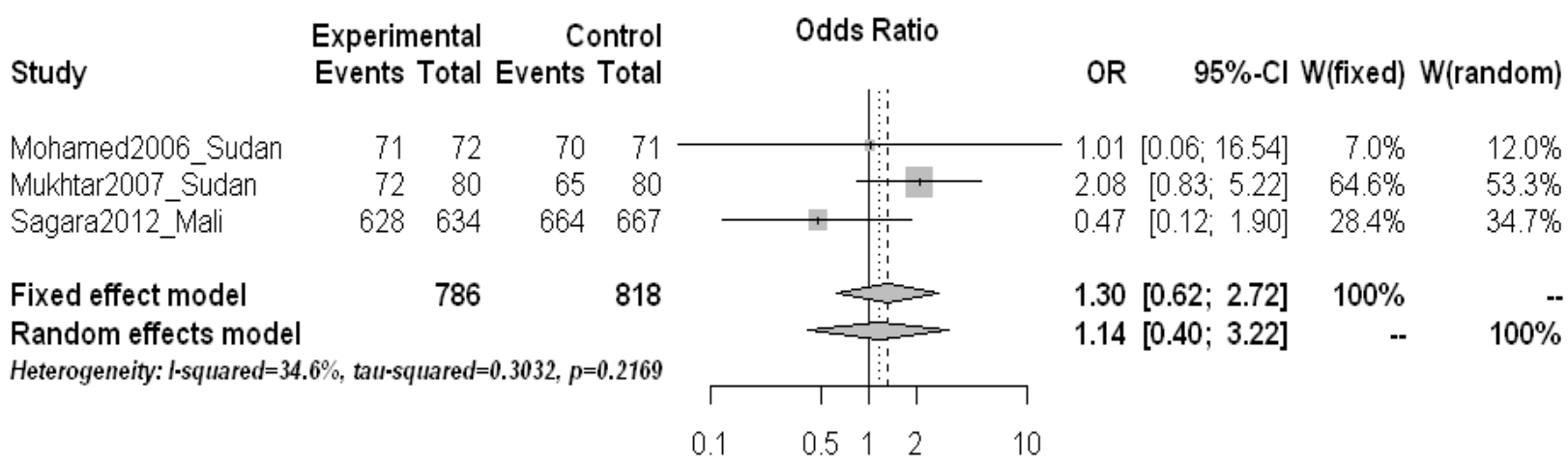


Figure 3: Head-to-head comparison of ARLM=ref and ASSP=control

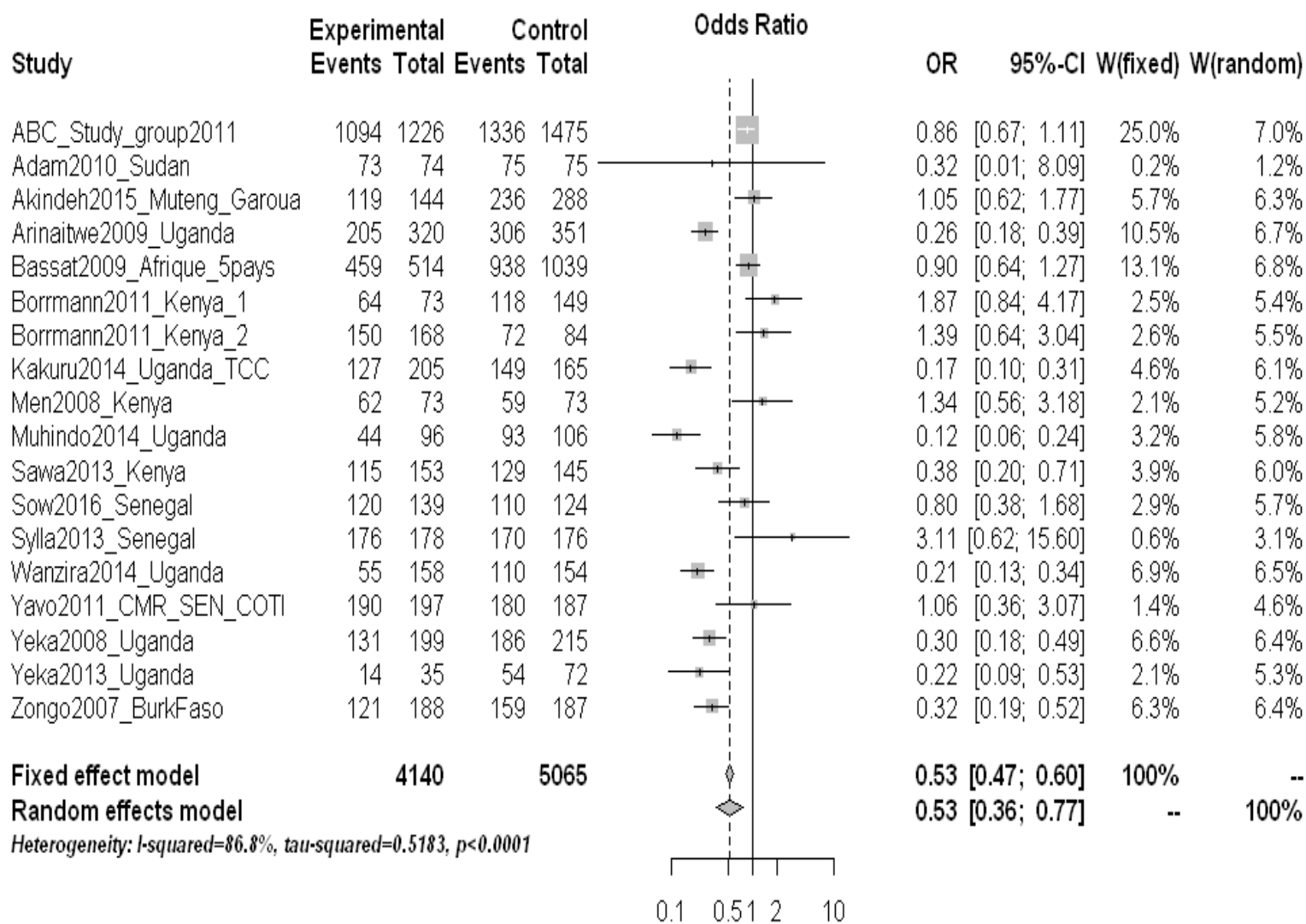


Figure 4: Head-to-head comparison of ARLM=ref and DHPP=control

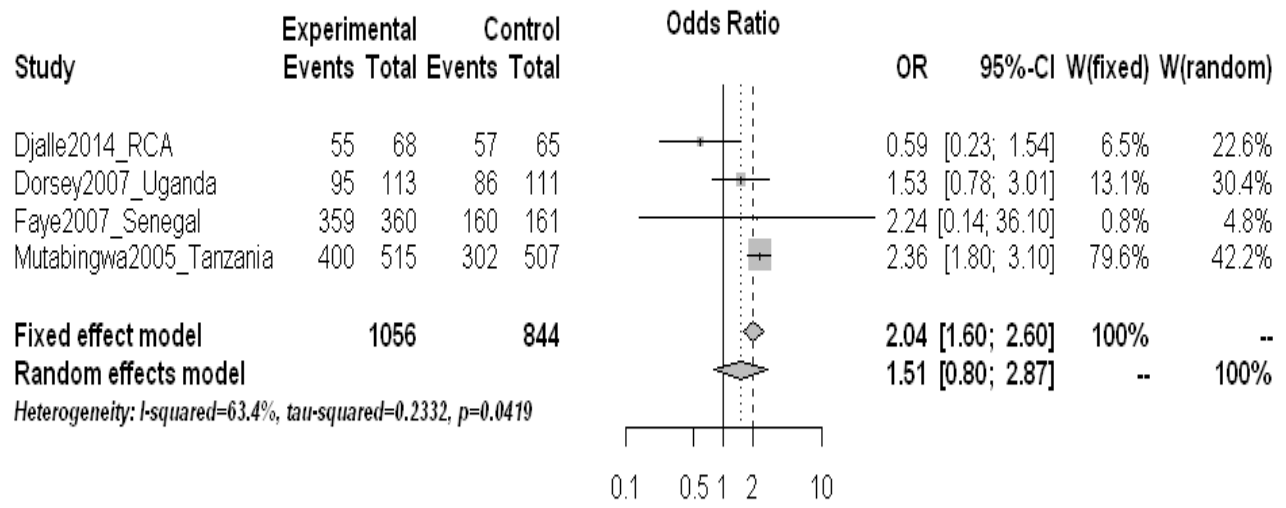


Figure 5: Head-to-head comparison of ASAQ=ref and AQSP=control

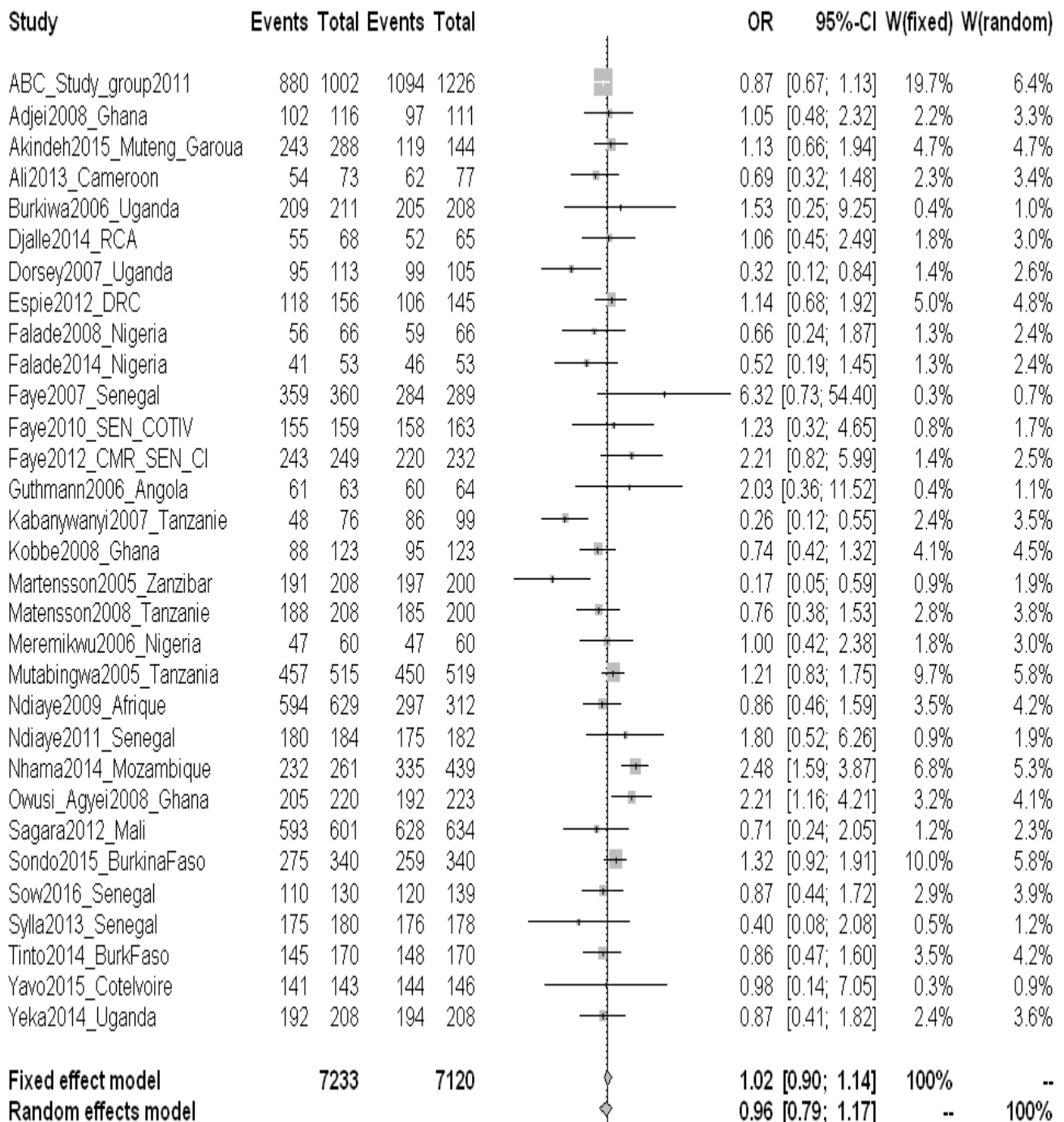


Figure 6: Head-to-head comparison of ASAQ=ref and ARLM=control

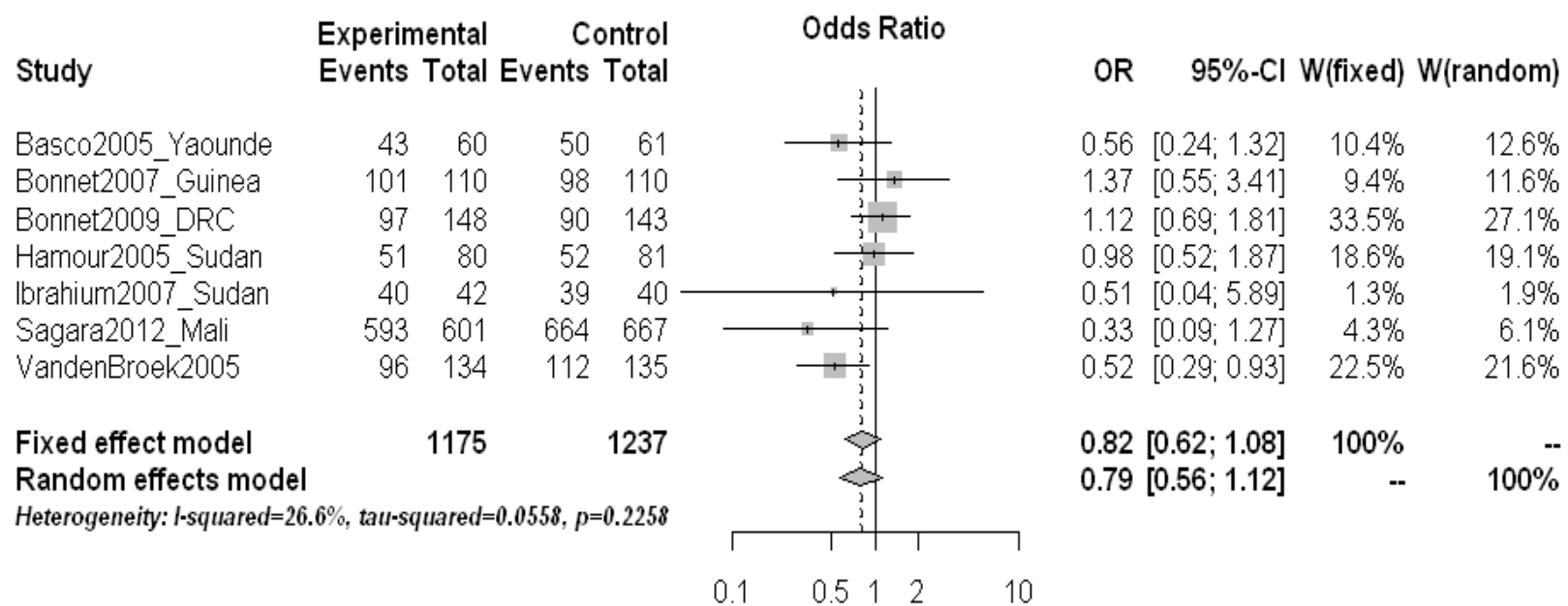


Figure 7: Head-to-head comparison of ASAQ=ref and ASSP=control

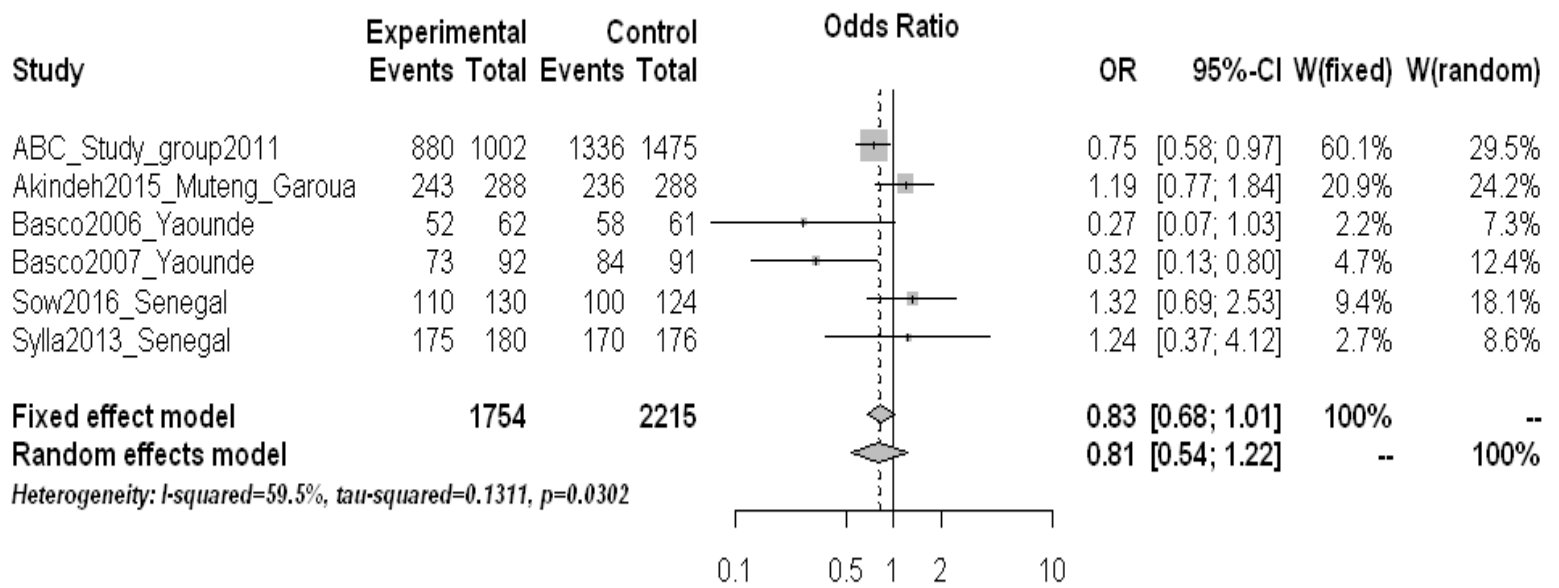


Figure 8: Head-to-head comparison of ASAQ=ref and DHPP=control

Node d[k,k']	Treatment k= control	Treatment k'= reference	Number of trials	Mean LogOR of ref vs ctrl	sd
d[1,2]	ARLM	AQSP	7	-0.0454	0.3923
d[1,3]	ARLM	ASAQ	31	0.08636	0.1855
d[1,4]	ARLM	ASAQCPH	1	0.6474	1.058
d[1,5]	ARLM	ASATPG	0	-0.1407	100.4
d[1,6]	ARLM	ASCD	4	-0.2814	0.5437
d[1,7]	ARLM	ASMQ	5	0.2315	0.5016
d[1,8]	ARLM	ASNAPH	2	-0.1993	1.366
d[1,9]	ARLM	ASPY	2	0.3429	0.6722
d[1,10]	ARLM	ASSMP	3	0.5023	0.6382
d[1,11]	ARLM	ASSP	3	-0.0148	0.6949
d[1,12]	ARLM	DHPP	18	0.6312	0.2367
d[1,13]	ARLM	DHPPT	1	0.3795	1.035
d[2,3]	AQSP	ASAQ	4	-0.0997	100.3
d[2,4]	AQSP	ASAQCPH	0	0.194	100.6
d[2,5]	AQSP	ASATPG	0	0.0818	99.58
d[2,6]	AQSP	ASCD	0	0.2918	99.79
d[2,7]	AQSP	ASMQ	2	0.3891	1.037
d[2,8]	AQSP	ASNAPH	0	-0.1155	99.81
d[2,9]	AQSP	ASPY	0	0.5803	100.2
d[2,10]	AQSP	ASSMP	1	0.3003	99.73
d[2,11]	AQSP	ASSP	1	-0.177	0.9994
d[2,12]	AQSP	DHPP	3	0.7597	0.6557
d[2,13]	AQSP	DHPPT	0	0.7231	100.2
d[3,4]	ASAQ	ASAQCPH	1	0.8938	99.85
d[3,5]	ASAQ	ASATPG	0	1.225	1.086
d[3,6]	ASAQ	ASCD	2	0.6311	99.84
d[3,7]	ASAQ	ASMQ	1	-0.7518	100.1
d[3,8]	ASAQ	ASNAPH	1	-0.1846	99.78
d[3,9]	ASAQ	ASPY	0	0.1836	99.59
d[3,10]	ASAQ	ASSMP	2	-0.6735	0.972
d[3,11]	ASAQ	ASSP	7	0.1922	0.4338
d[3,12]	ASAQ	DHPP	6	1.273	0.7718
d[3,13]	ASAQ	DHPPT	0	0.2256	99.59
d[4,5]	ASAQCPH	ASATPG	0	0.3247	100.1
d[4,6]	ASAQCPH	ASCD	0	0.1505	100.5
d[4,7]	ASAQCPH	ASMQ	0	-0.0691	99.37
d[4,8]	ASAQCPH	ASNAPH	0	0.3129	99.7
d[4,9]	ASAQCPH	ASPY	0	0.2768	99.44
d[4,10]	ASAQCPH	ASSMP	0	0.03252	99.26
d[4,11]	ASAQCPH	ASSP	0	0.659	100.3
d[4,12]	ASAQCPH	DHPP	0	-0.6399	100
d[4,13]	ASAQCPH	DHPPT	0	0.4048	99.95

Table 1: The fitted model with inconsistency assumption provided 2-by-2 comparisons; comparisons given the other treatments as common comparators follow.

Node d[k,k']	Treatment k= control	Treatment k'= reference	Number of trials	Mean LogOR of ref vs ctrl	sd
d[5,6]	ASATPG	ASCD	0	0.173	99.86
d[5,7]	ASATPG	ASMQ	0	-0.0829	99.86
d[5,8]	ASATPG	ASNAPH	0	-0.1185	100.8
d[5,9]	ASATPG	ASPY	0	-1.053	100.1
d[5,10]	ASATPG	ASSMP	0	-0.2764	99.54
d[5,11]	ASATPG	ASSP	0	-0.1506	100.1
d[5,12]	ASATPG	DHPP	0	0.8972	99.79
d[5,13]	ASATPG	DHPPT	0	-0.5034	99.9
d[6,7]	ASCD	ASMQ	0	0.1101	99.93
d[6,8]	ASCD	ASNAPH	0	-0.1616	99.86
d[6,9]	ASCD	ASPY	0	0.02656	99.47
d[6,10]	ASCD	ASSMP	0	0.2459	100
d[6,11]	ASCD	ASSP	1	1.808	1.013
d[6,12]	ASCD	DHPP	1	0.237	100.3
d[6,13]	ASCD	DHPPT	0	-0.0264	100.6
d[7,8]	ASMQ	ASNAPH	0	-0.3731	100.1
d[7,9]	ASMQ	ASPY	0	-0.0517	99.88
d[7,10]	ASMQ	ASSMP	0	-0.2189	99.84
d[7,11]	ASMQ	ASSP	0	-0.049	100.7
d[7,12]	ASMQ	DHPP	0	0.4478	100.2
d[7,13]	ASMQ	DHPPT	0	0.8446	99.29
d[8,9]	ASNAPH	ASPY	0	0.1556	100.2
d[8,10]	ASNAPH	ASSMP	0	-0.5263	100.5
d[8,11]	ASNAPH	ASSP	0	0.3574	99.81
d[8,12]	ASNAPH	DHPP	0	-0.8014	100.2
d[8,13]	ASNAPH	DHPPT	0	-0.4107	99.82
d[9,10]	ASPY	ASSMP	0	0.1542	99.22
d[9,11]	ASPY	ASSP	0	0.04094	99.97
d[9,12]	ASPY	DHPP	0	0.2887	100.2
d[9,13]	ASPY	DHPPT	0	0.2626	100.3
d[10,11]	ASSMP	ASSP	0	-1.56	10 0.4
d[10,12]	ASSMP	DHPP	0	-0.5191	100.3
d[10,13]	ASSMP	DHPPT	0	-0.6216	100
d[11,12]	ASSP	DHPP	0	-0.4688	100.2
d[11,13]	ASSP	DHPPT	0	0.01358	100.7
d[12,13]	DHPP	DHPPT	0	-0.5988	99.78

Table 2: The fitted model with inconsistency assumption provided 2-by-2 comparisons; comparisons given the other treatments as common comparators follow.