

Figure A32. MCA plot showing the joint distribution of the categories in dimensions 1x3. See Table 2 for information on variable names.

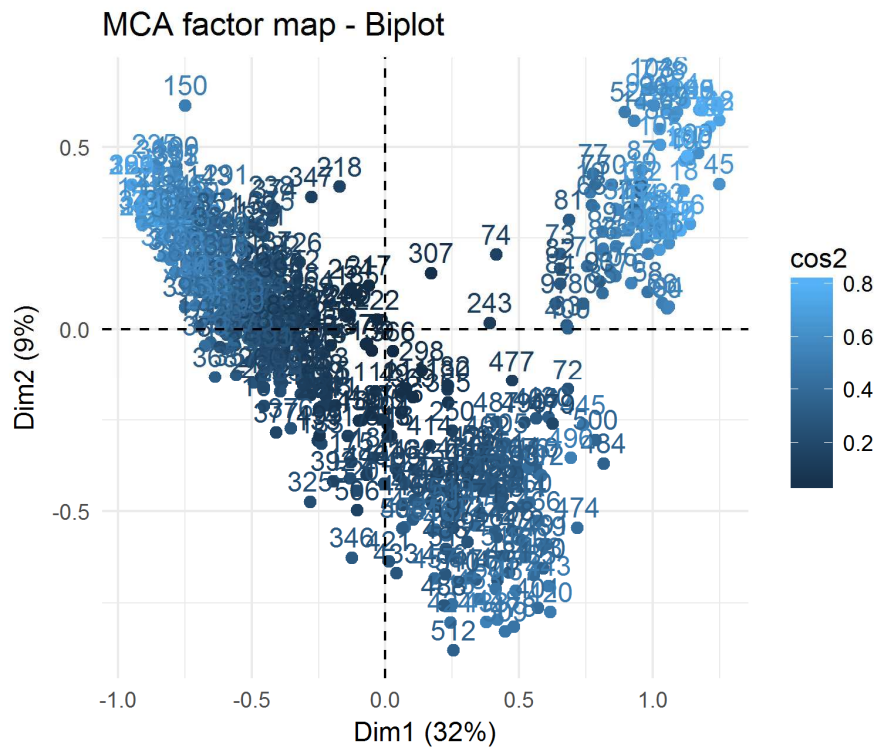


Figure A33. 1x2 dimension MCA factor map showing the squared cosine for each household.

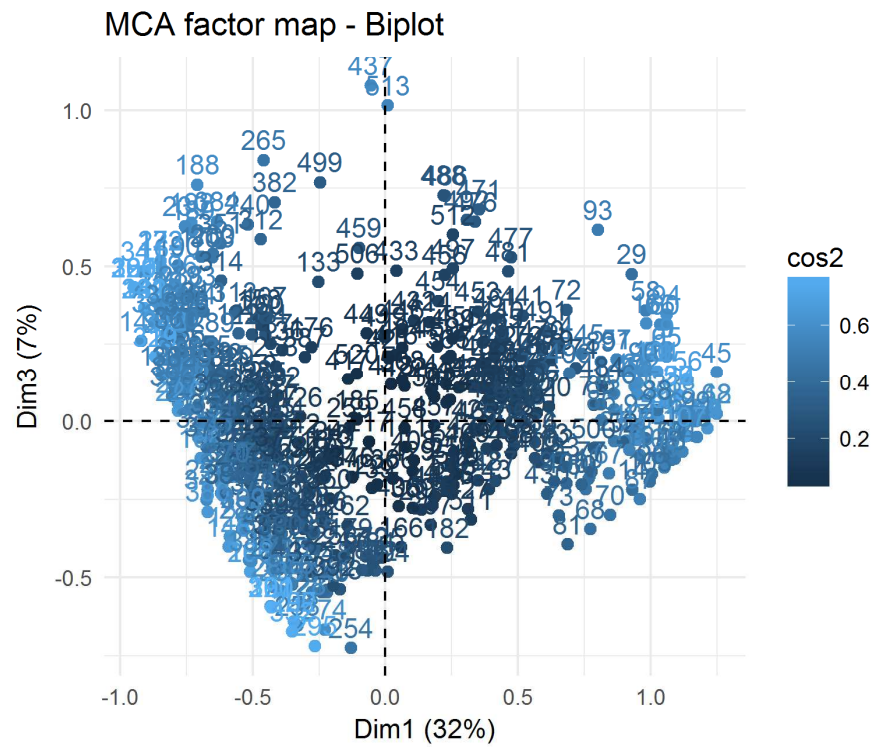


Figure A34. 1x3 dimension MCA factor map showing the squared cosine for each household.

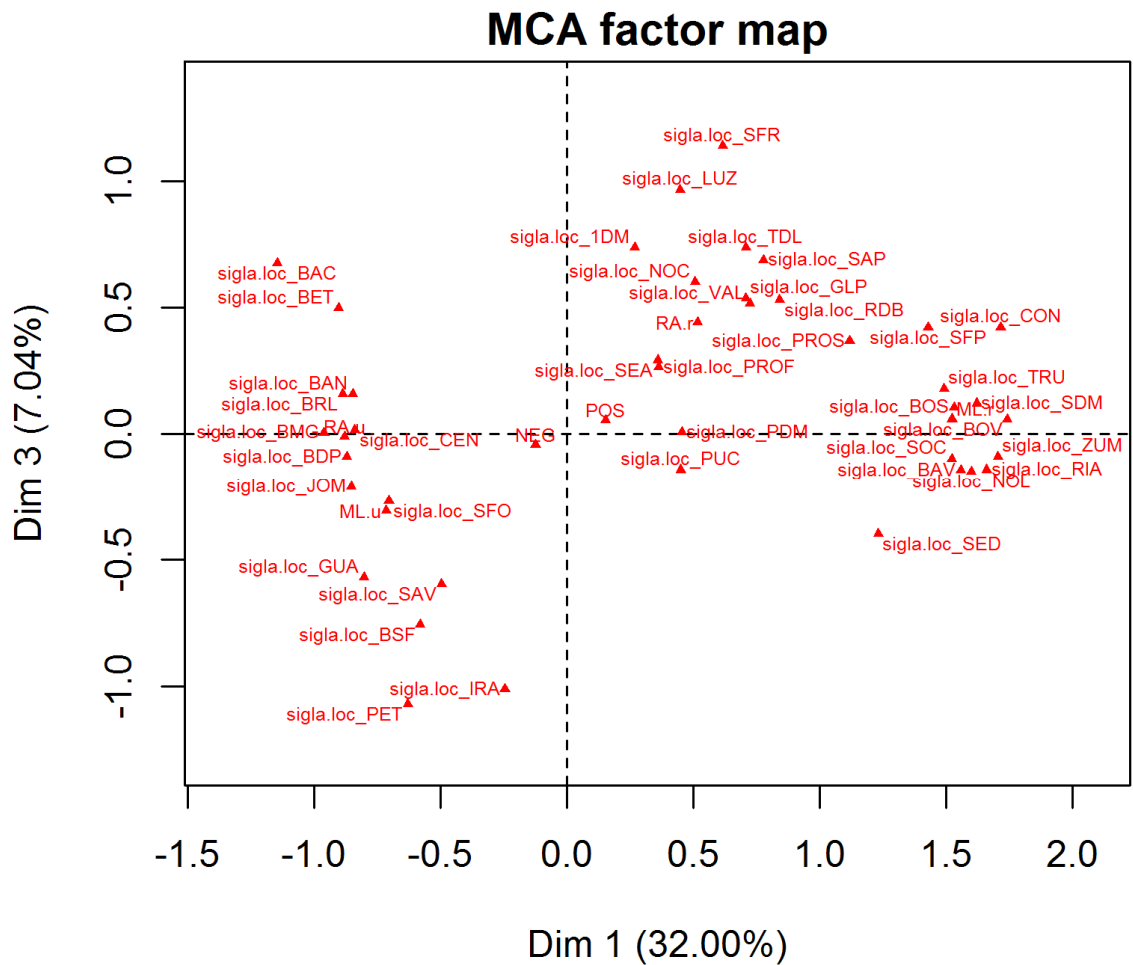


Figure A36. Distribution of the 40 localities in the 1x3 MCA plot. POS/NEG refers to the report of malaria in the last 12 months. These variables were included as Supplementary variables in the MCA analysis, so they did not participate in the MCA construction. See Additional file 1 for information on variable names.