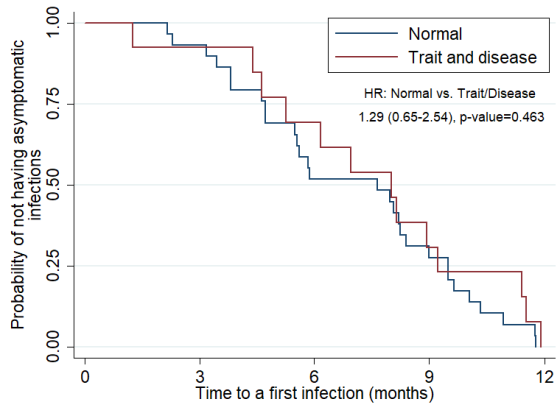


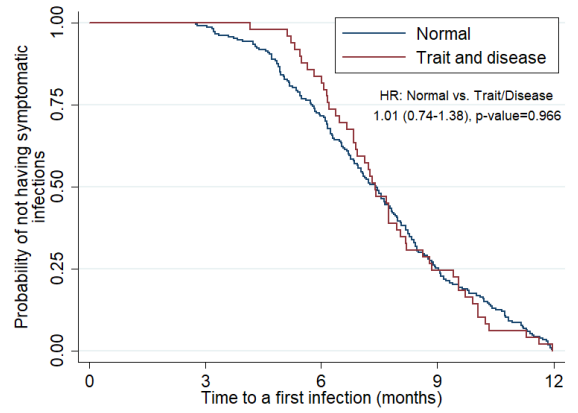
## Additional file 4: Sickle cell variation and time to first malaria infection

### A. Only-asymptomatic



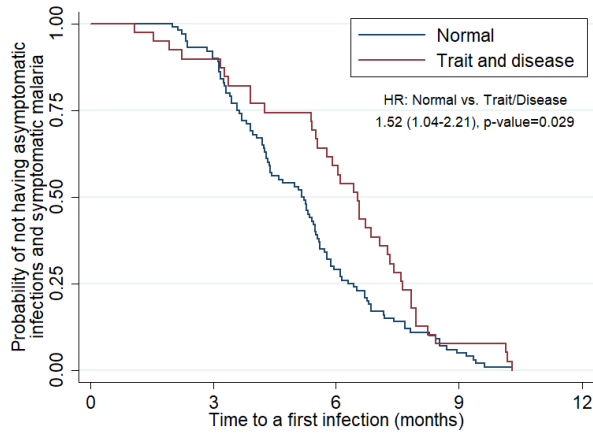
Number at risk	0	3	6	9	12
Normal	29	27	15	9	0
Trait and disease	13	12	9	4	0

### B. Only-symptomatic



Number at risk	0	3	6	9	12
Normal	207	205	148	52	0
Trait and disease	49	49	41	12	0

### C. Alternating



Number at risk	0	3	6	9	12
Normal	100	90	29	5	0
Trait and disease	39	35	23	3	0