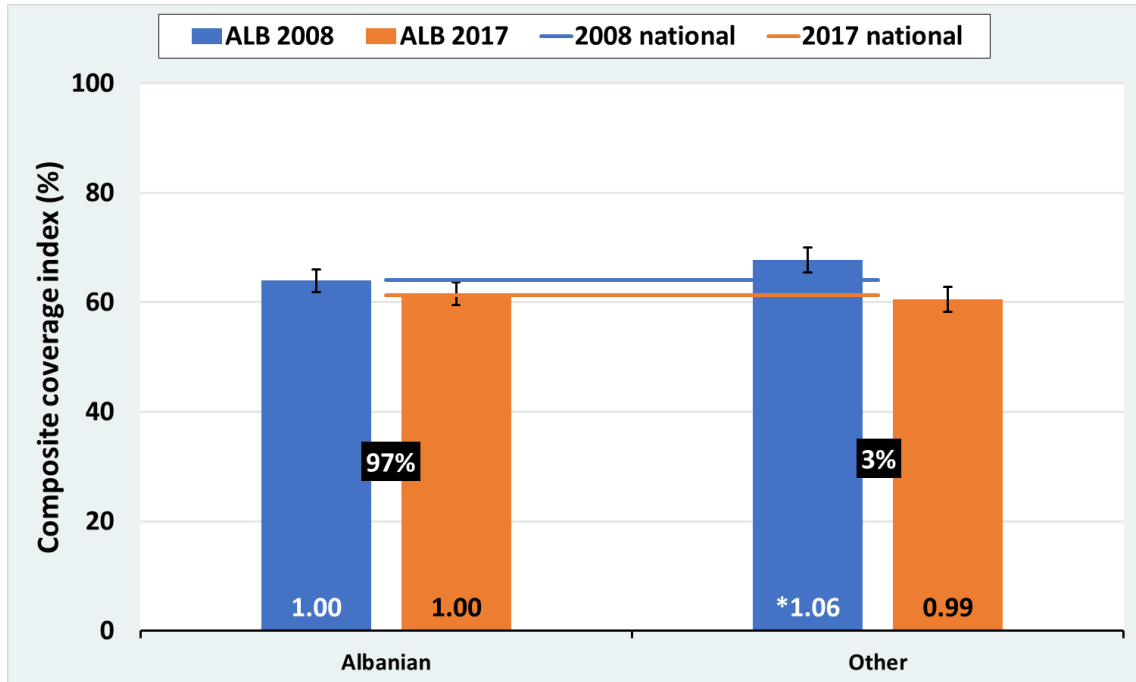
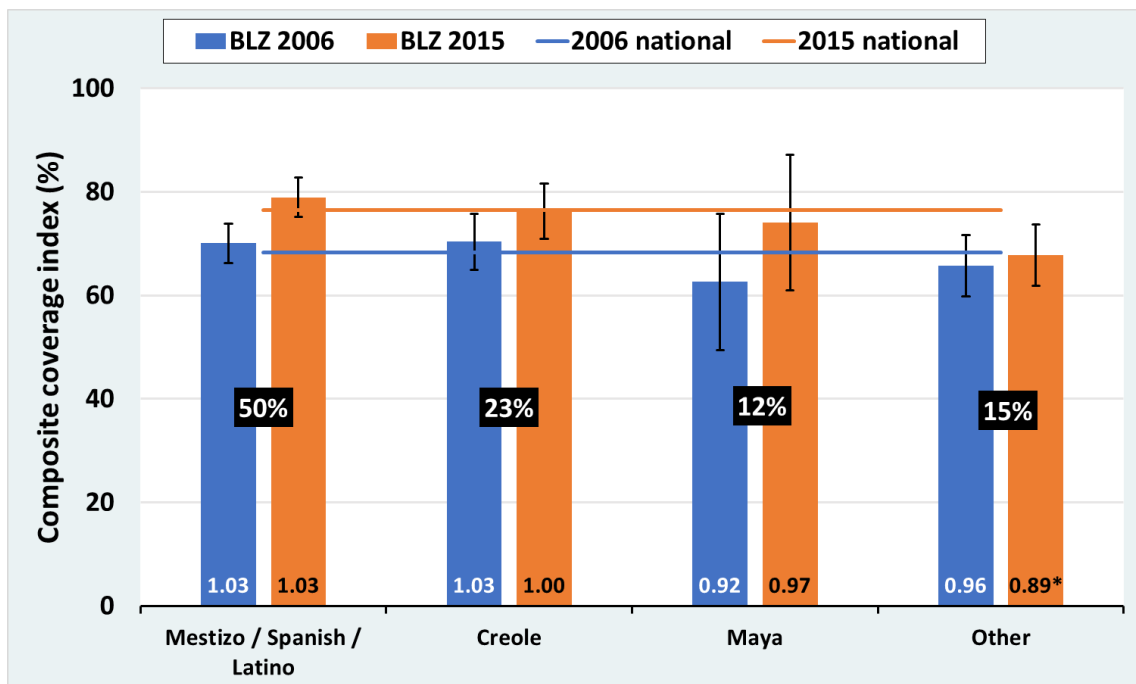


Supplementary figures 2. Composite coverage index by ethnic groups in the first and last surveys. Results for selected countries. The numbers in the black rectangles show the average proportion of the samples for each ethnic groups in the two surveys. The numbers at the bottom of the bars show the ratio between the rate in a particular ethnic group and the national rate for that point in time (\* statistically significant in relation to the respective national average).

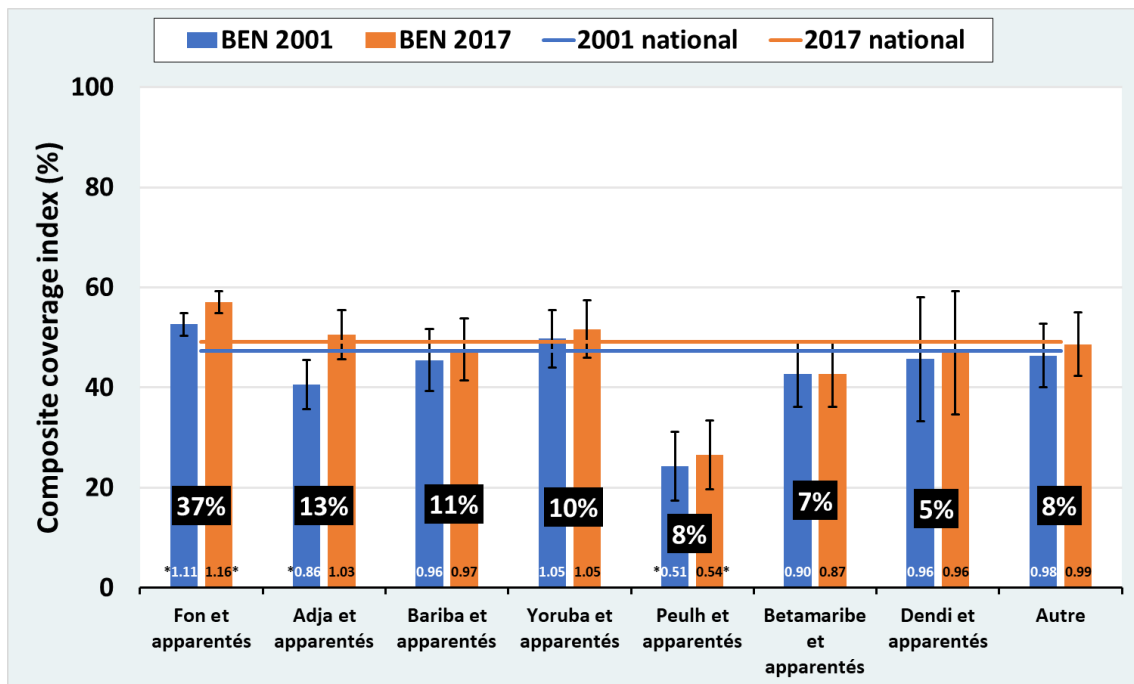
Albania



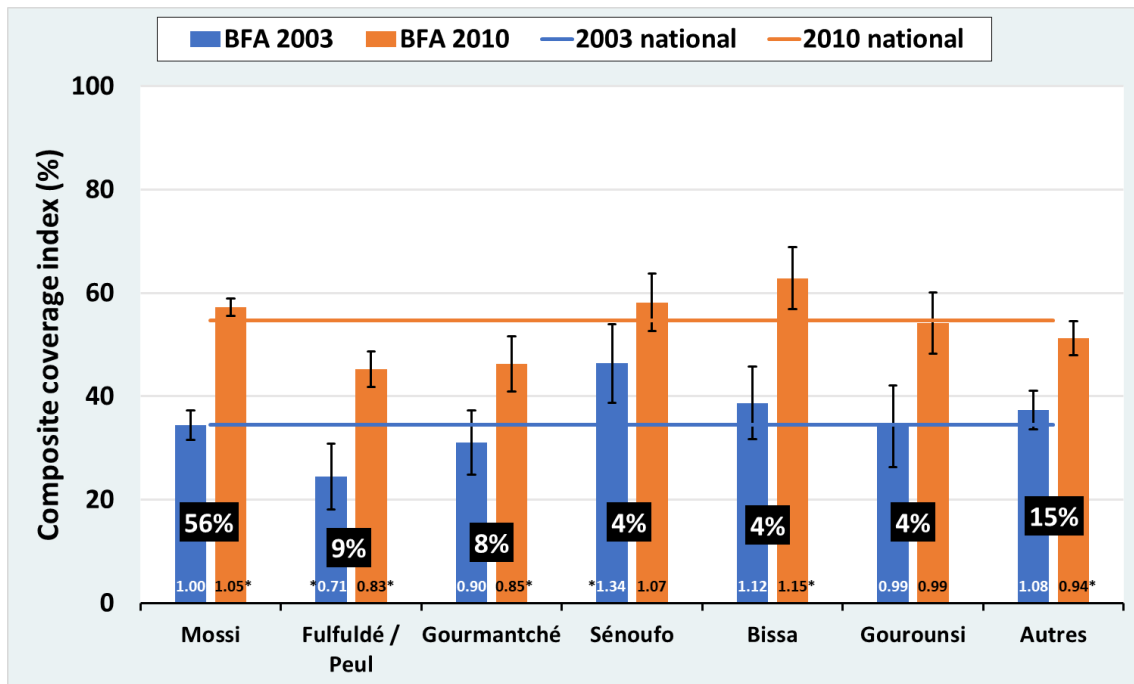
Belize



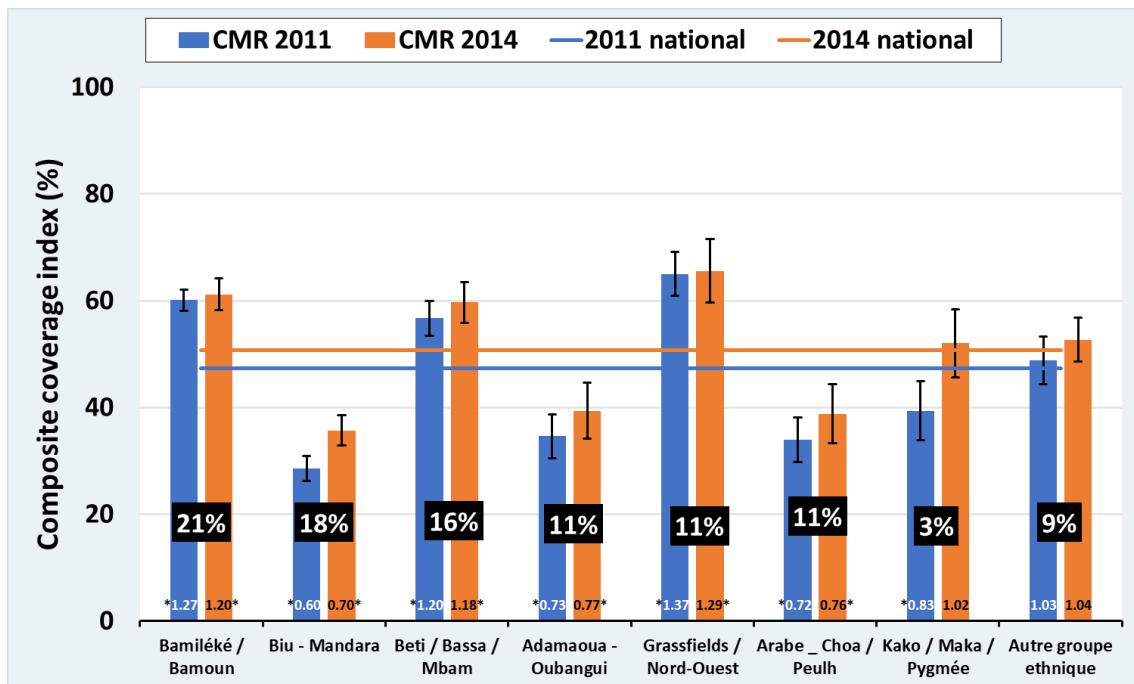
## Benin



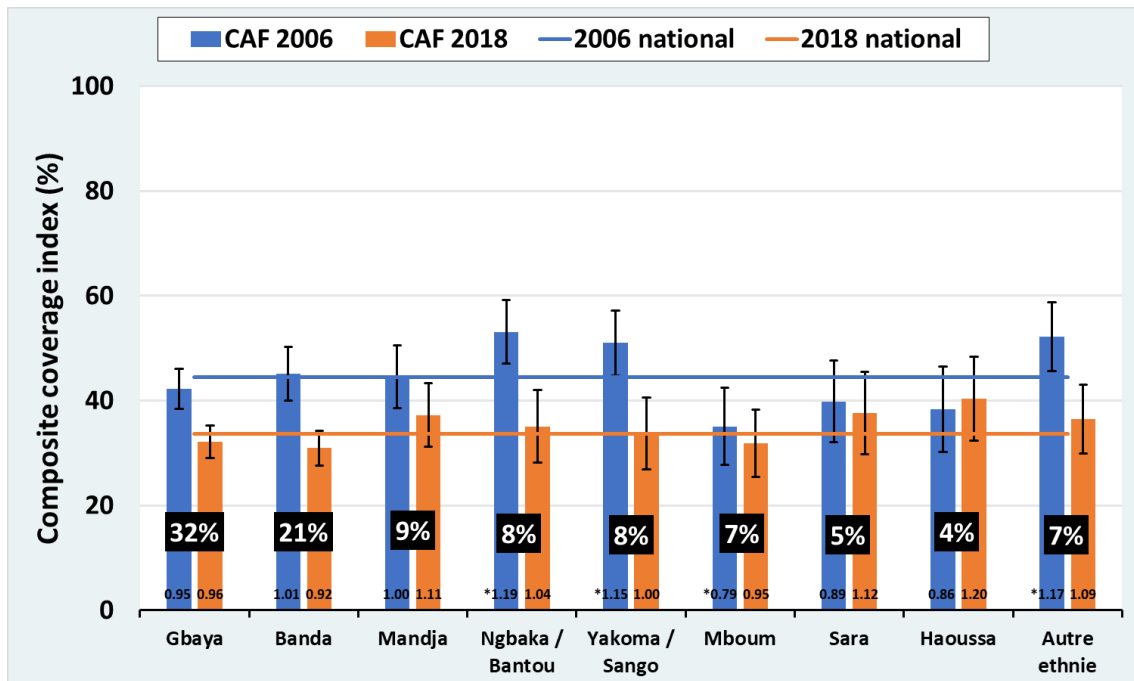
## Burkina Faso



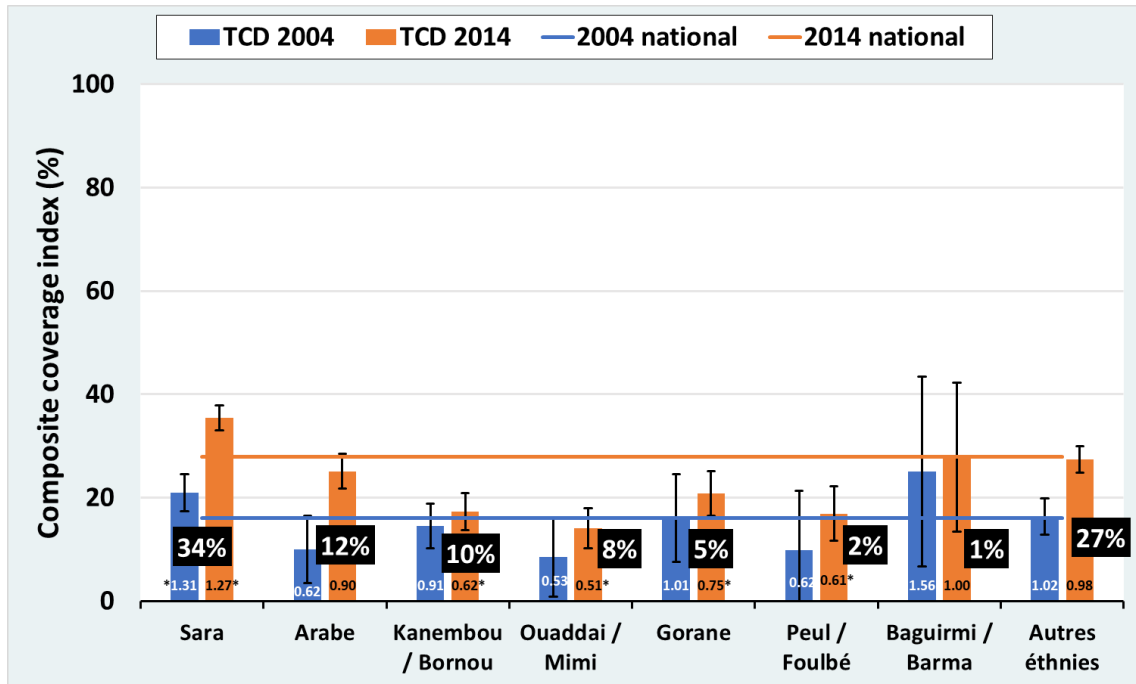
## Cameroon



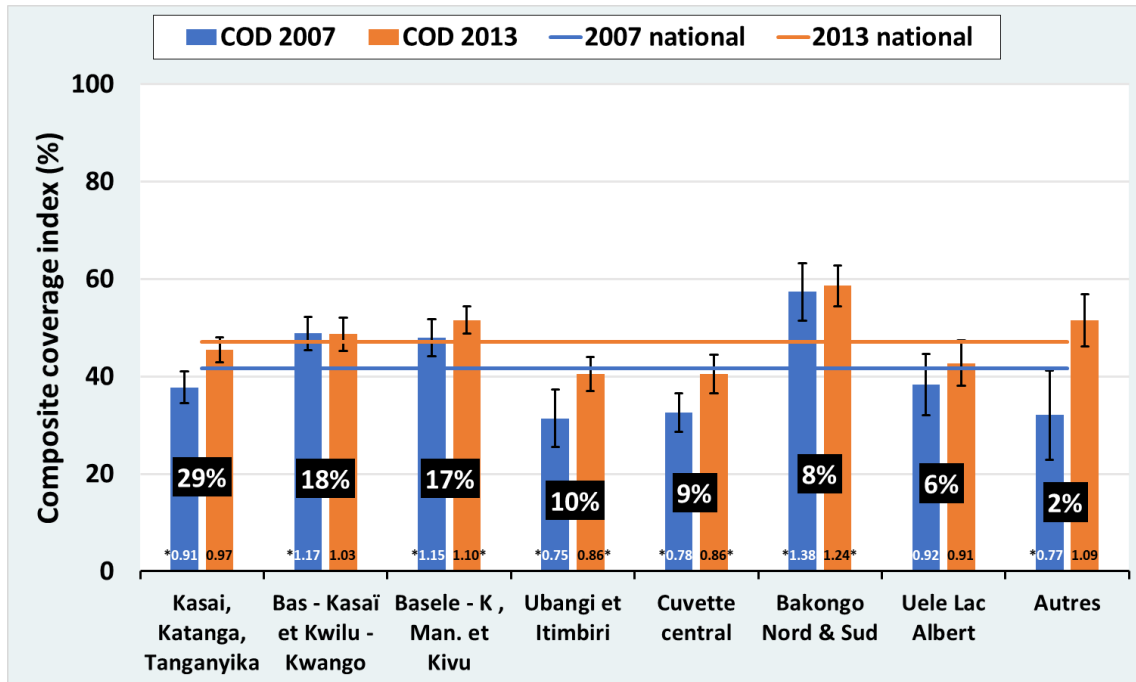
## Central African Republic



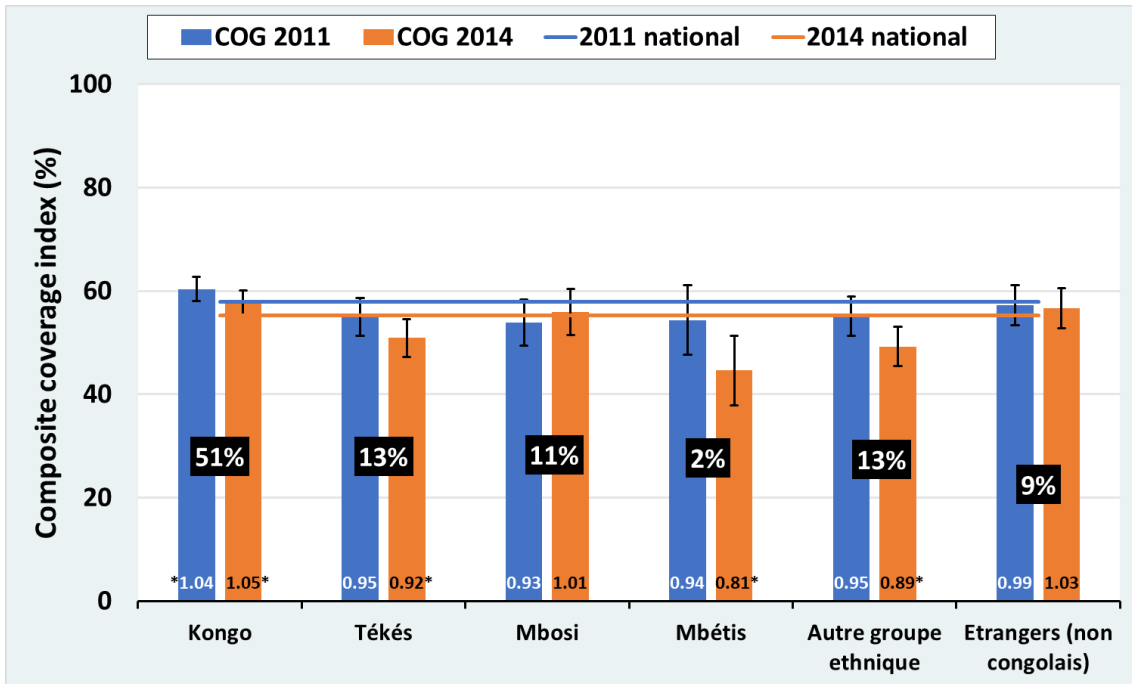
Chad



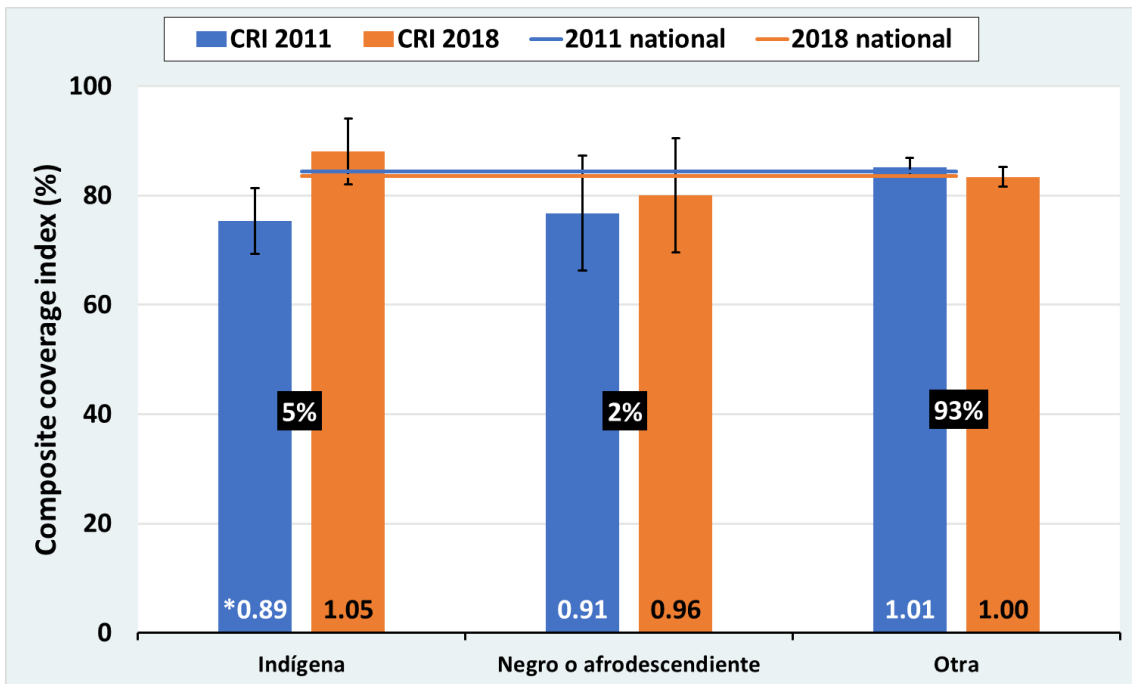
Congo DR



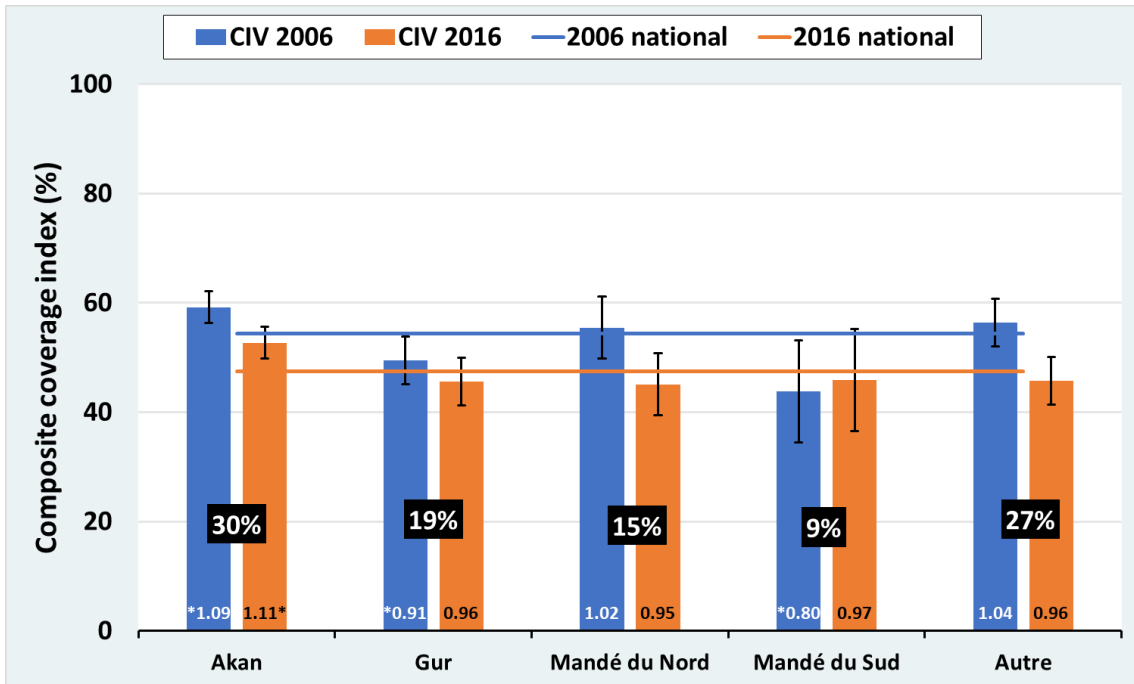
### Congo Republic



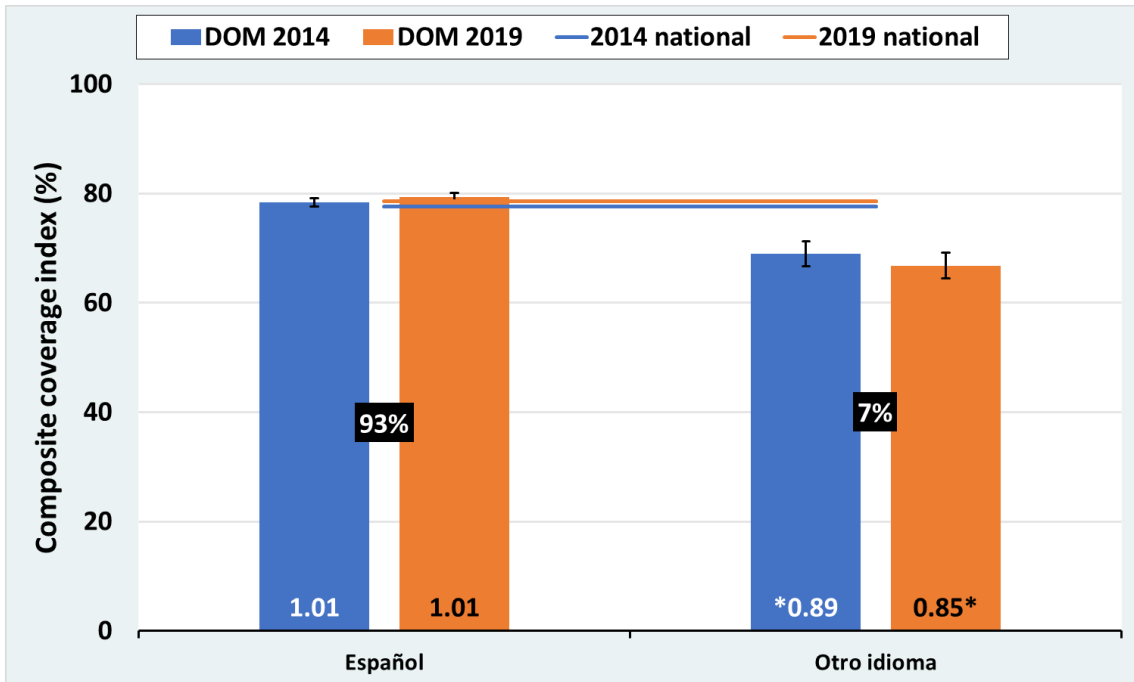
### Costa Rica



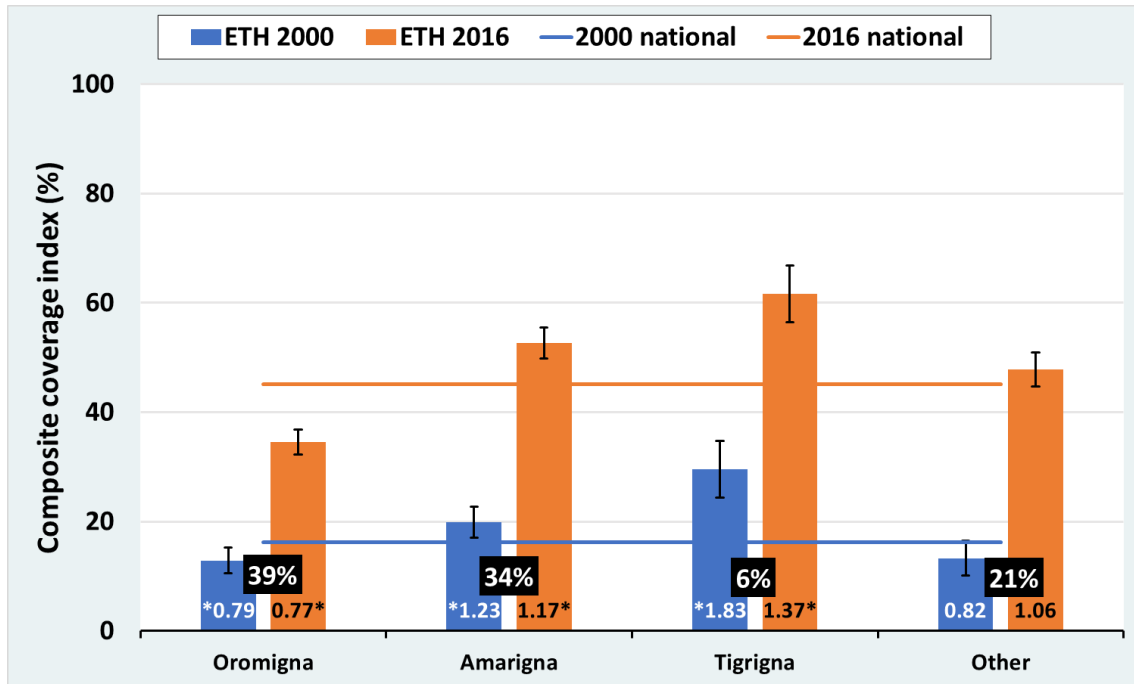
Côte d'Ivoire



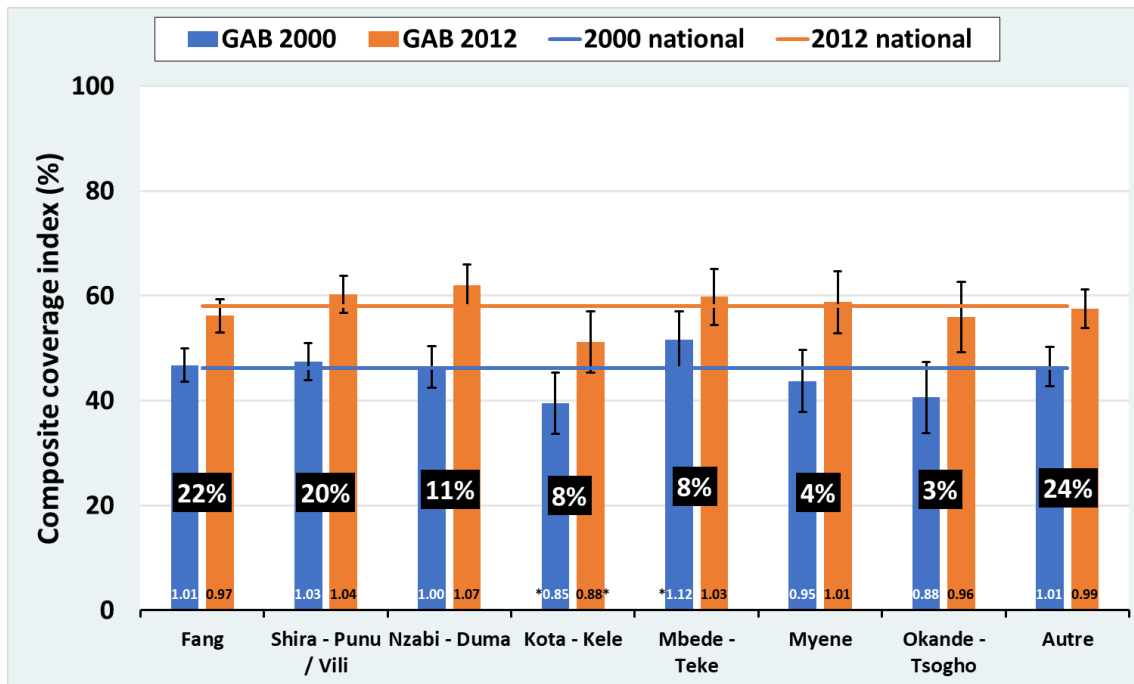
Dominican Republic



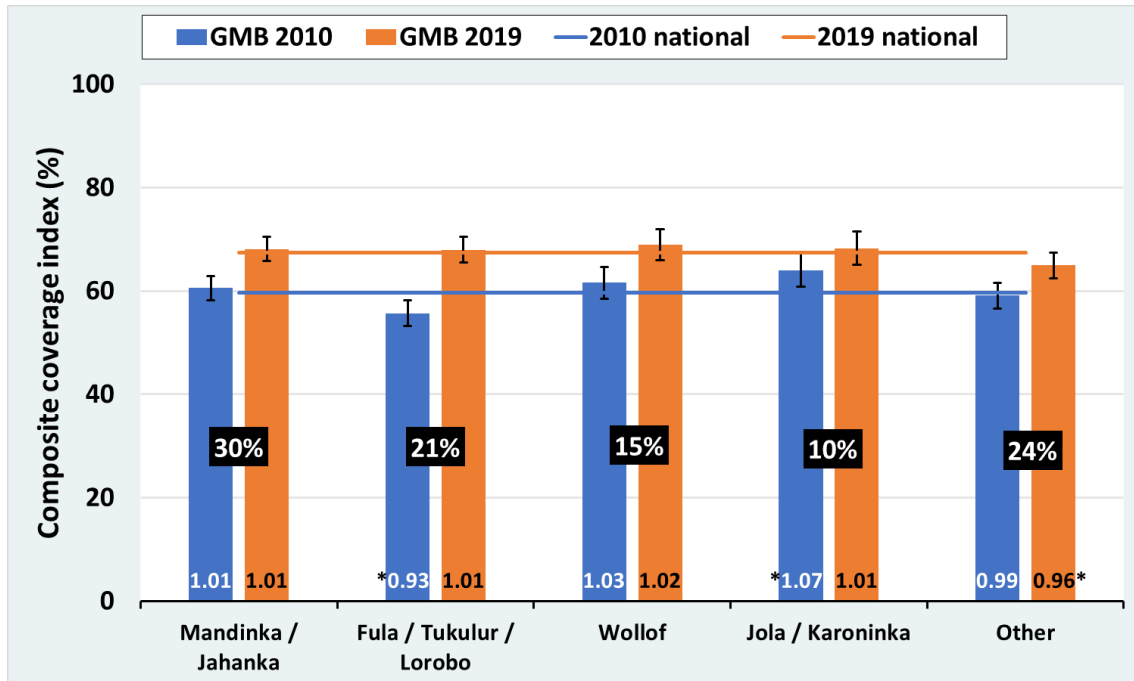
## Ethiopia



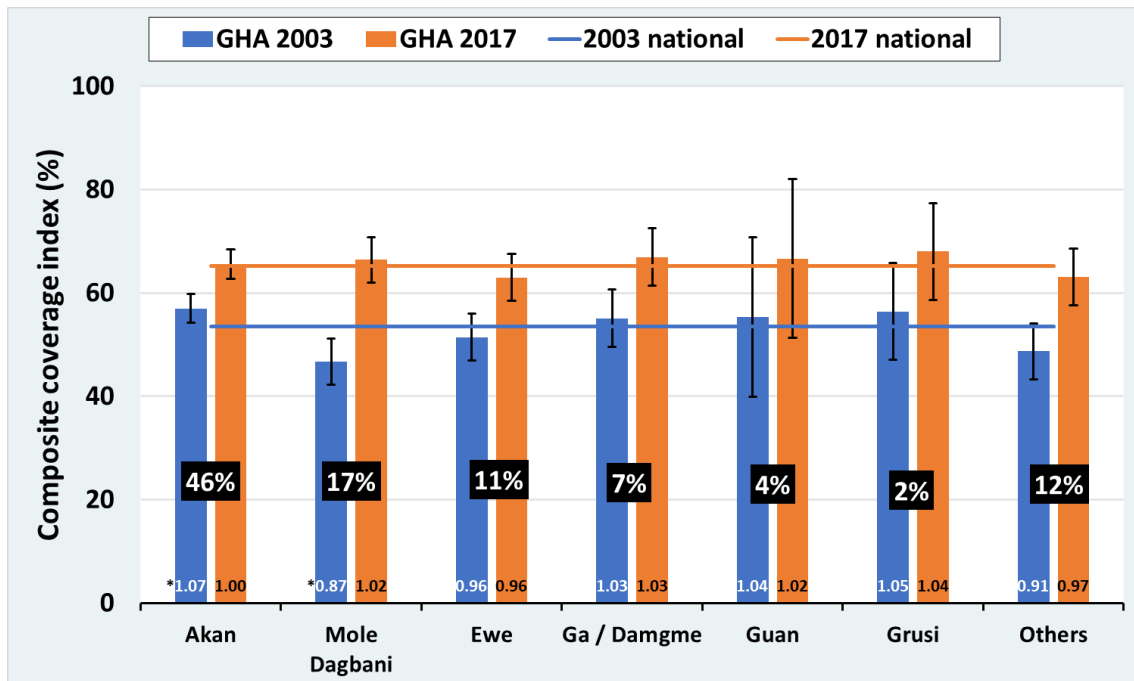
## Gabon



## Gambia

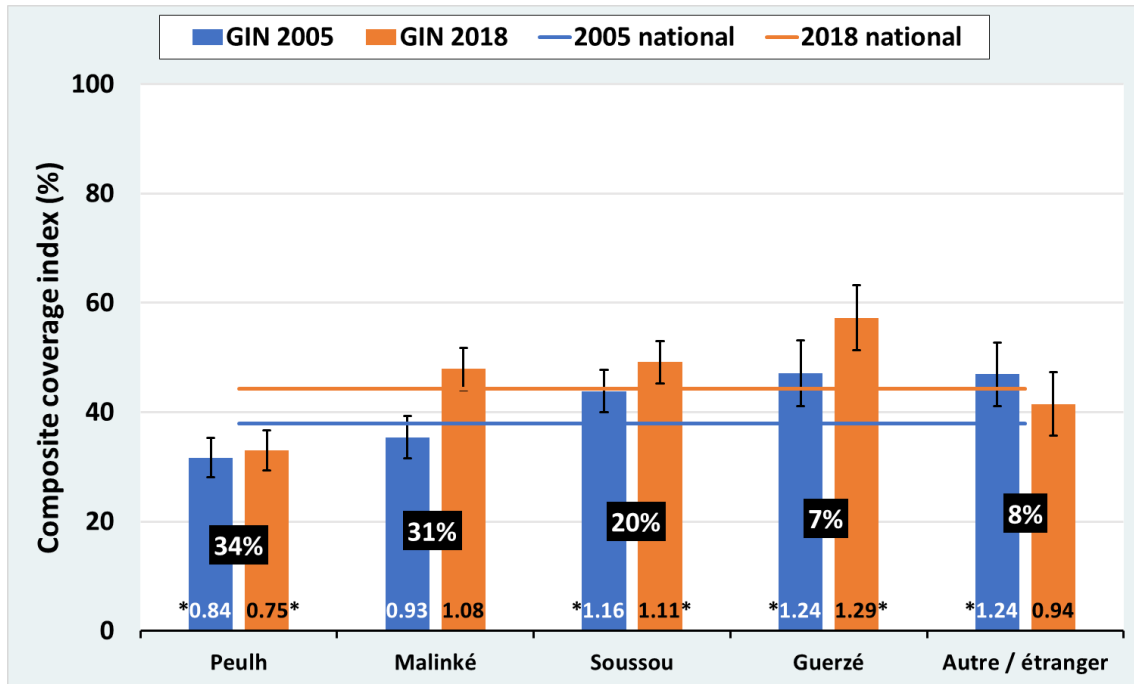


## Ghana

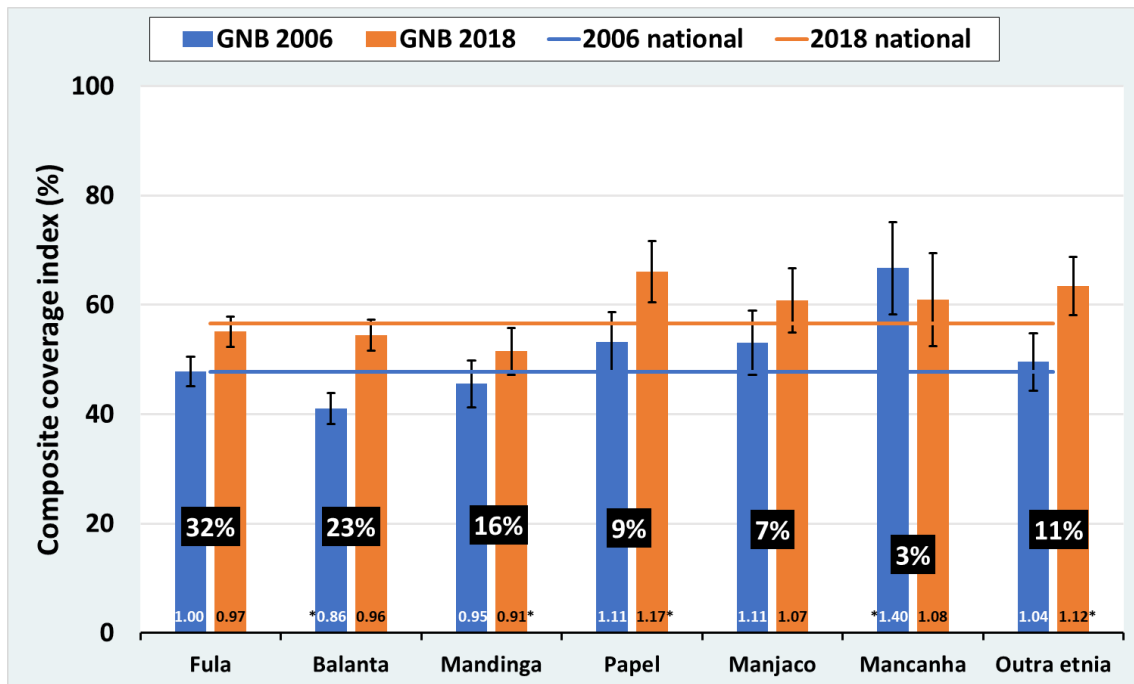




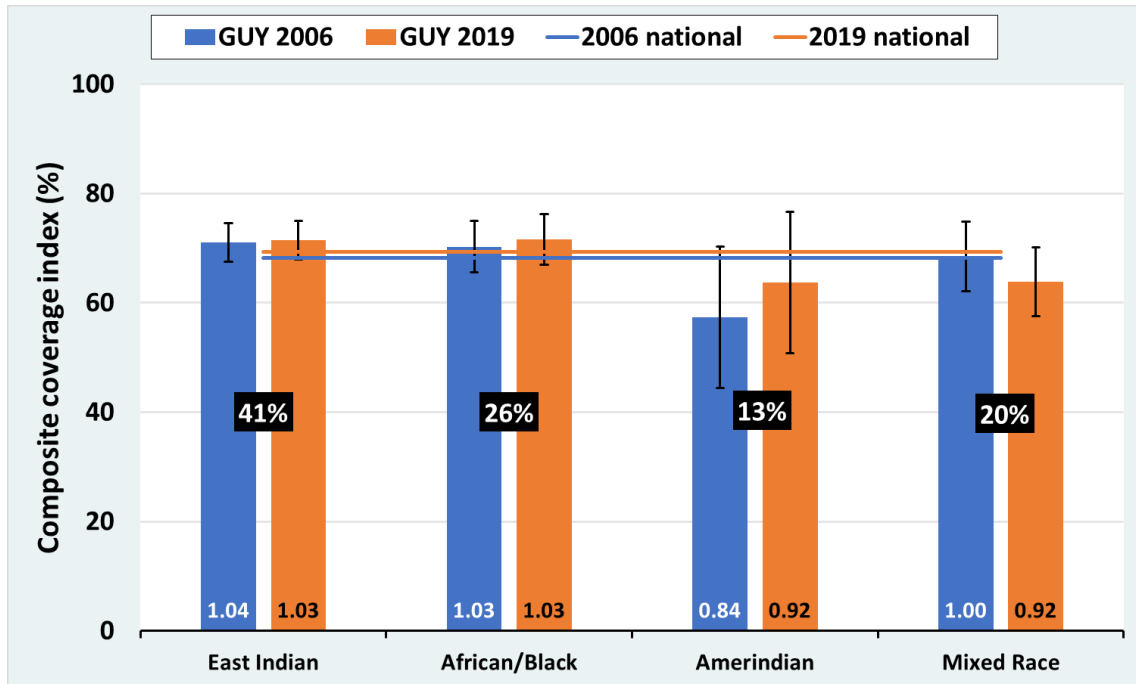
## Guinea



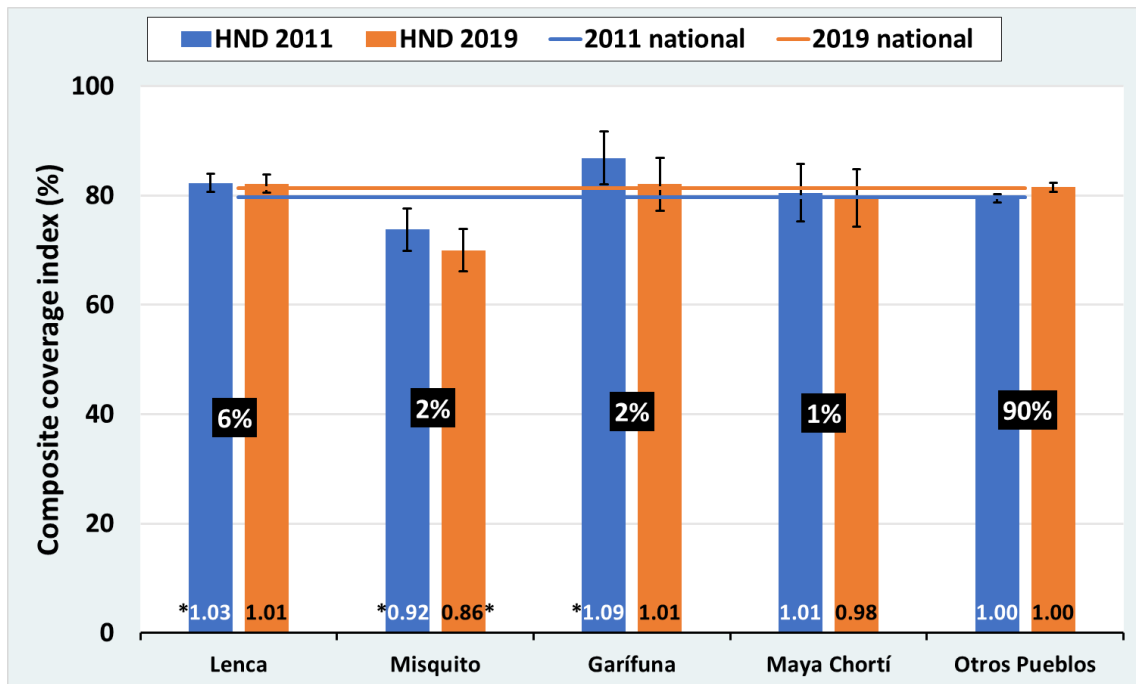
## Guinea-Bissau



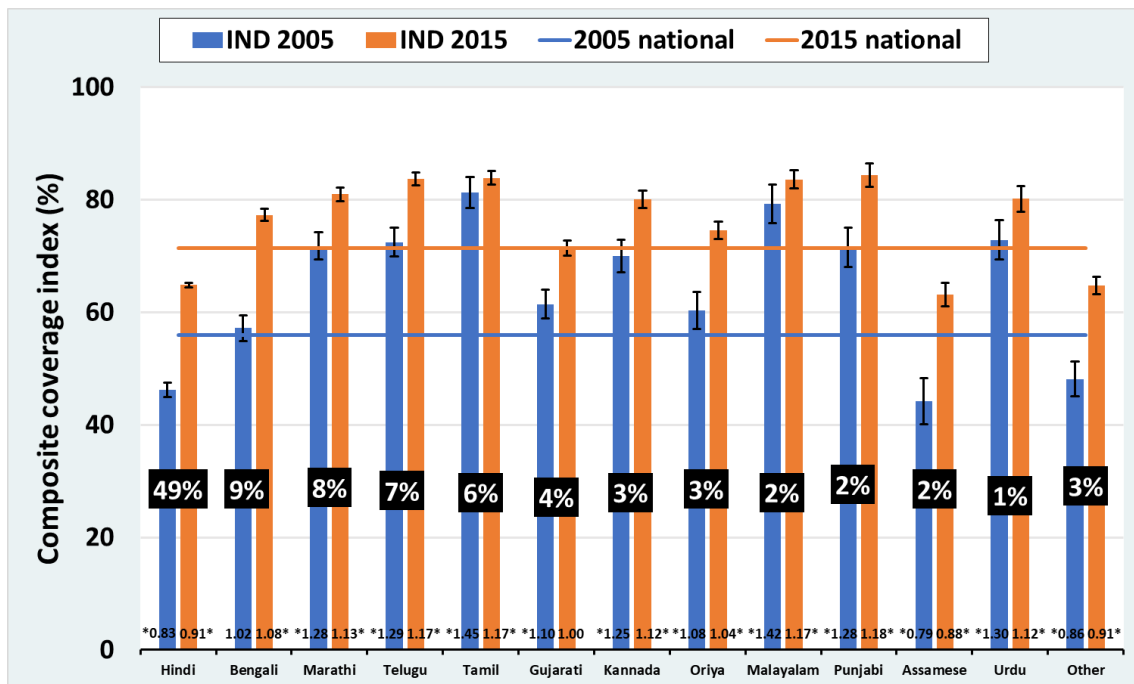
### Guyana



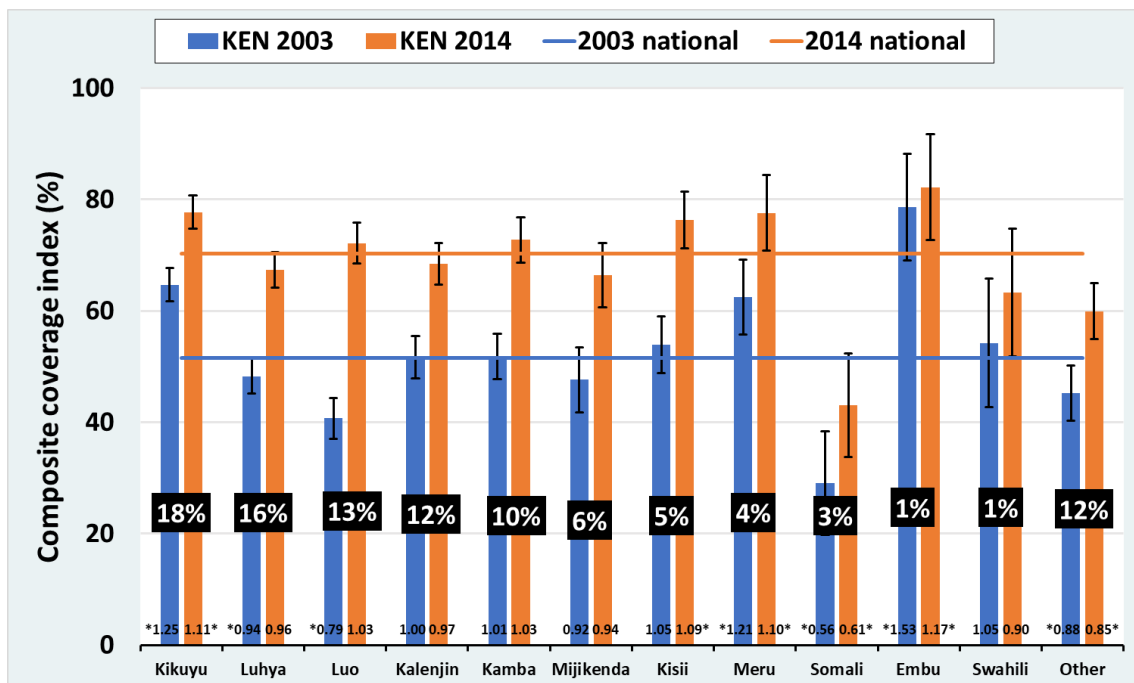
### Honduras



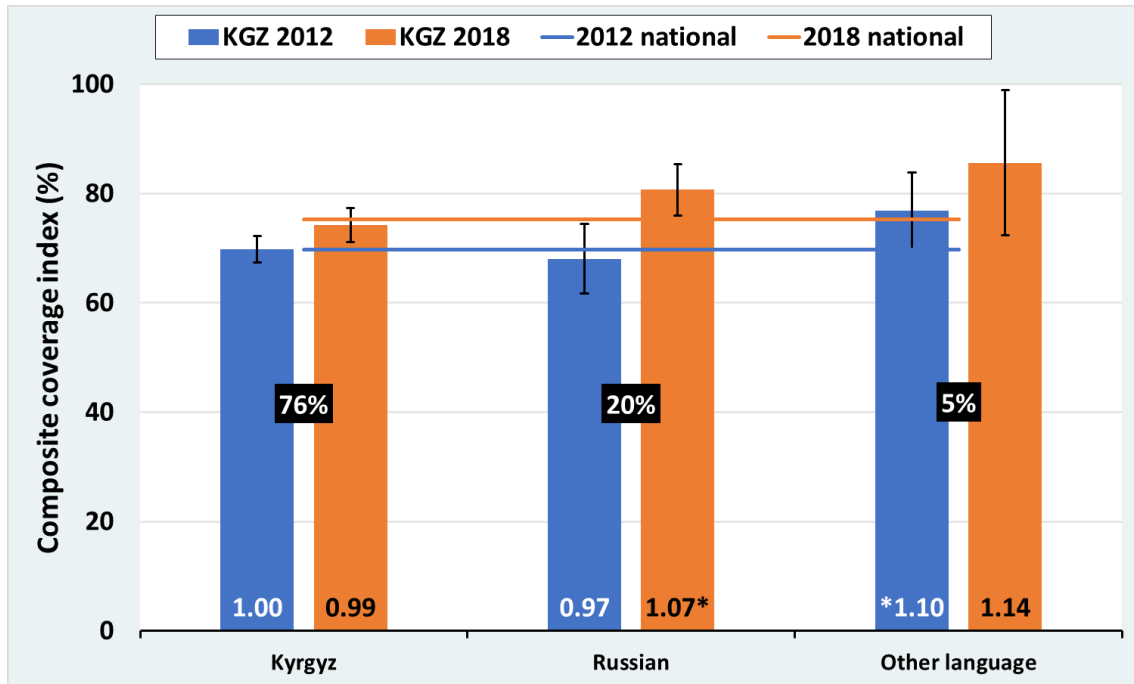
## India



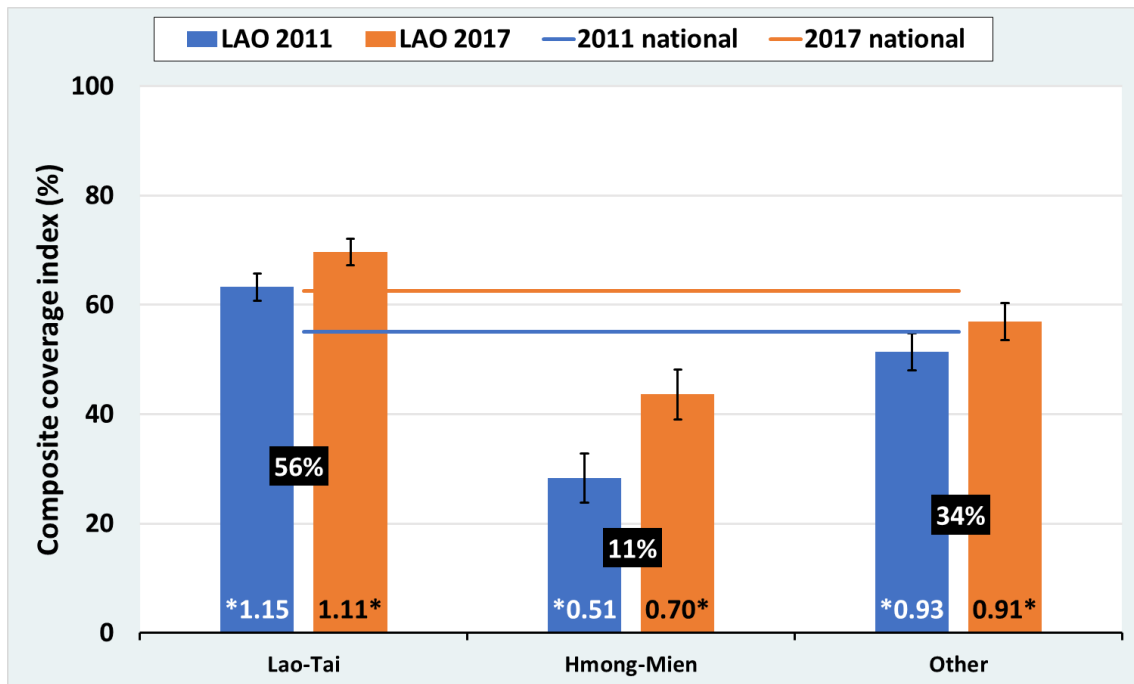
## Kenya



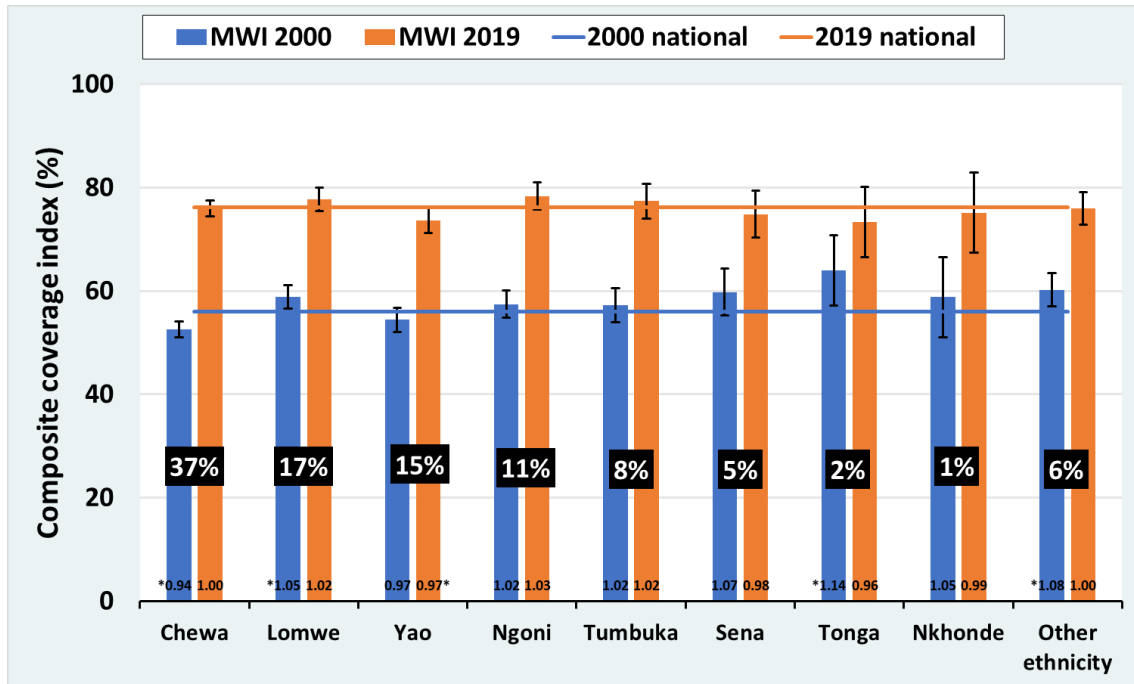
### Kyrgyzstan



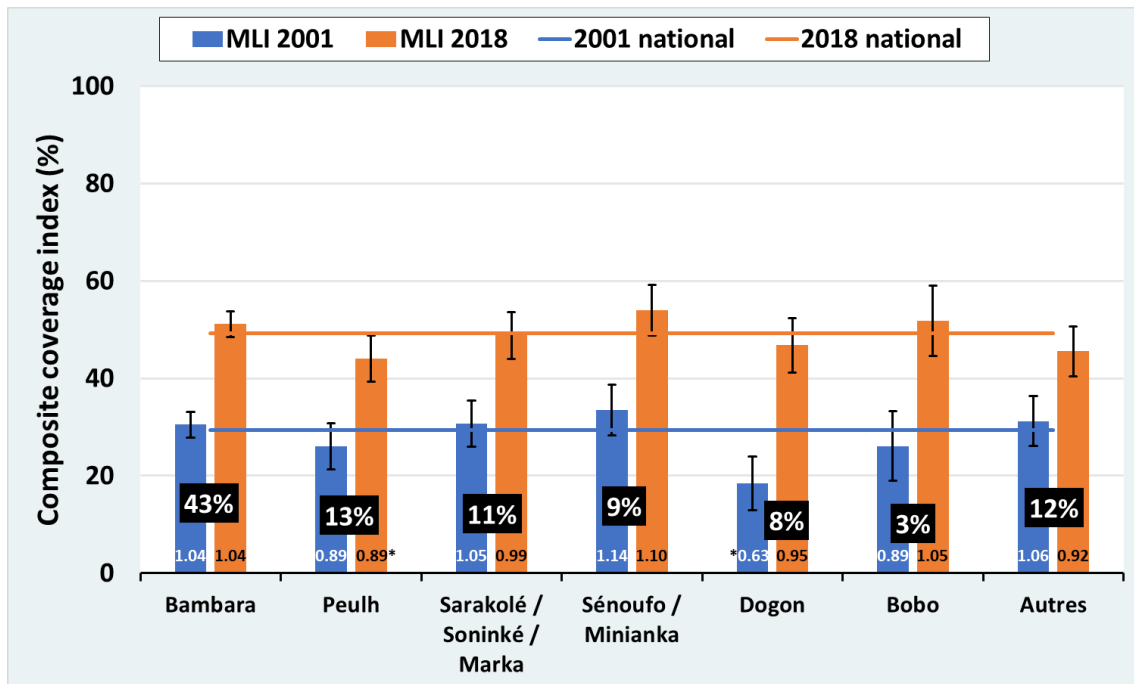
### Lao PDR



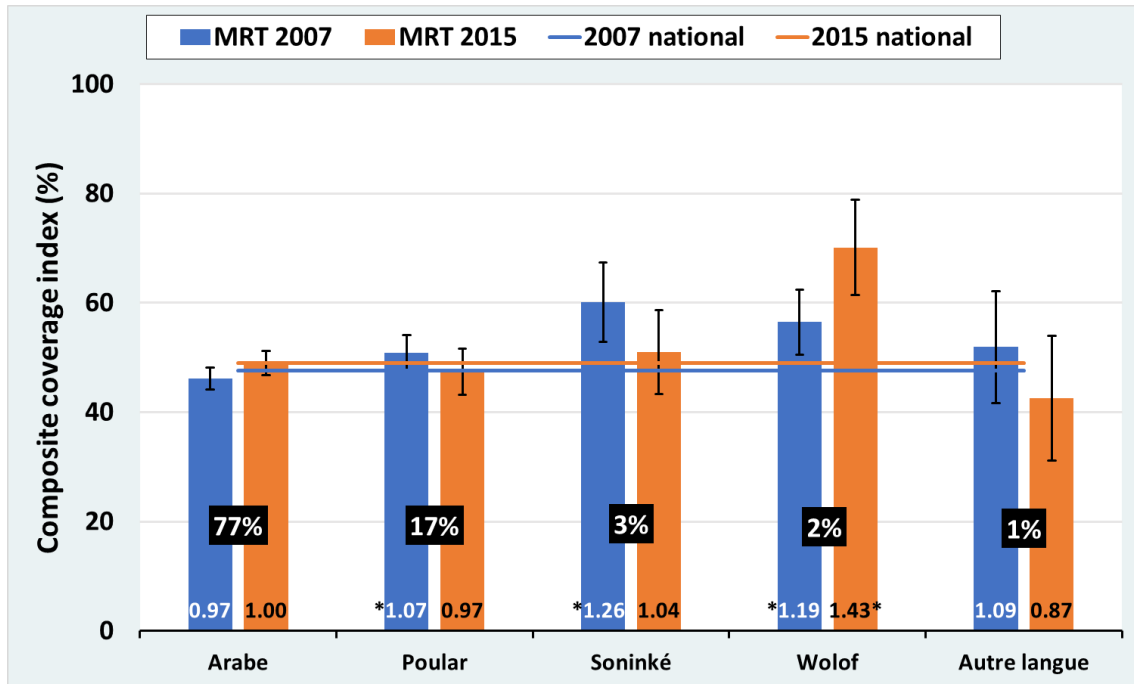
Malawi



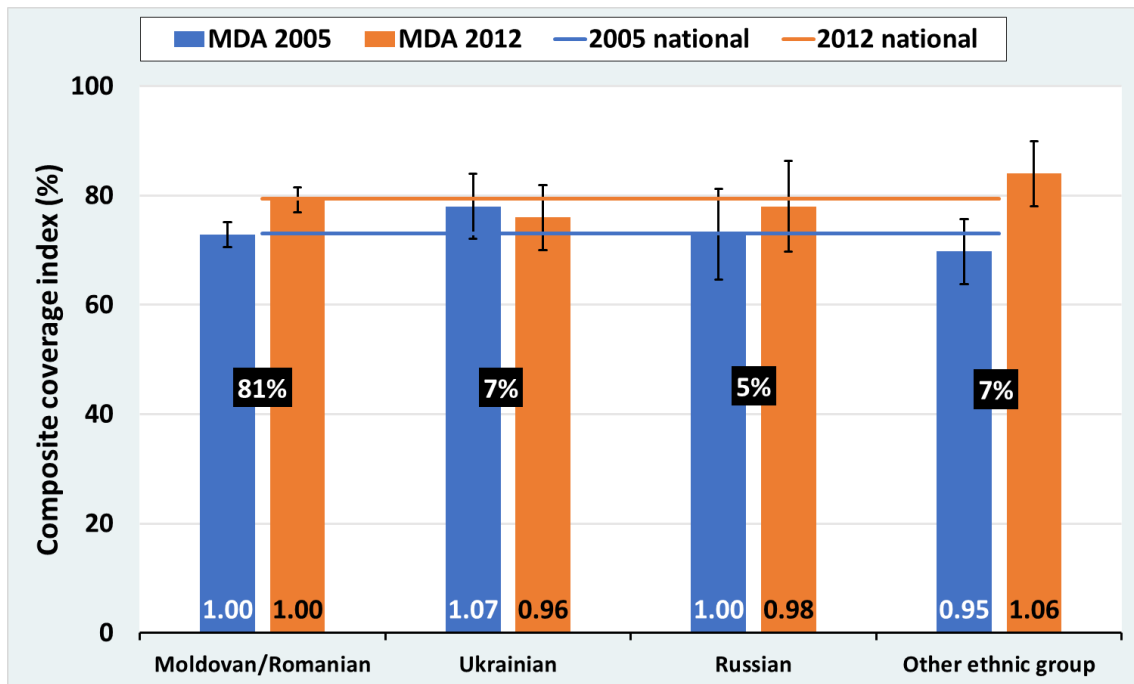
Mali



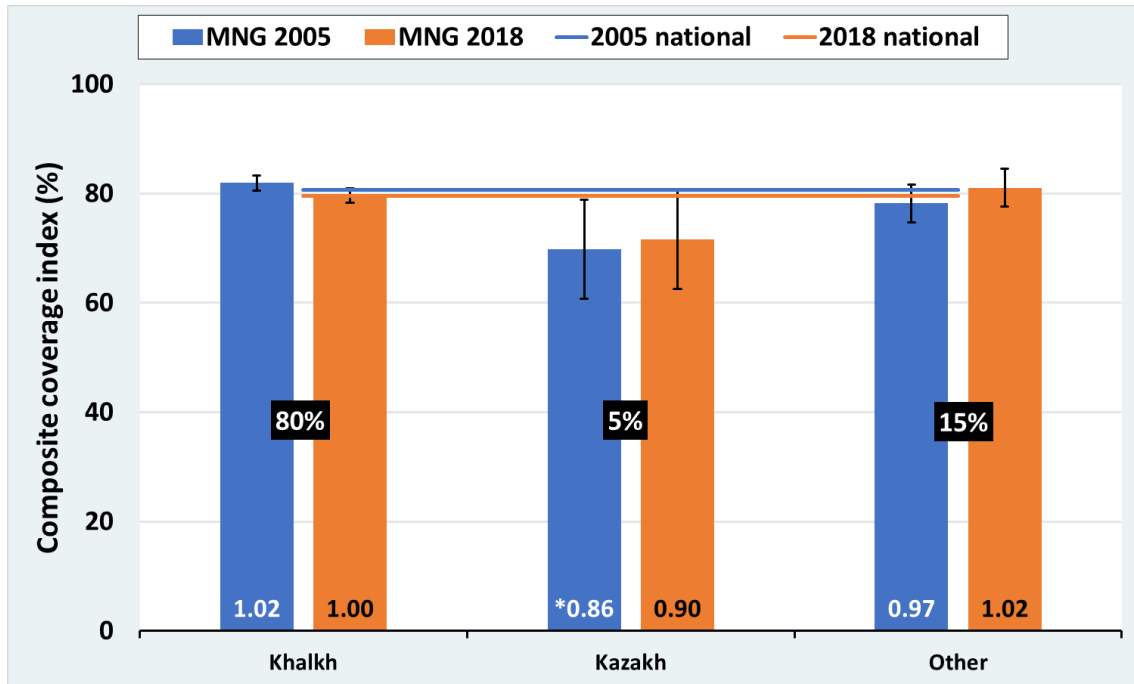
### Mauritania



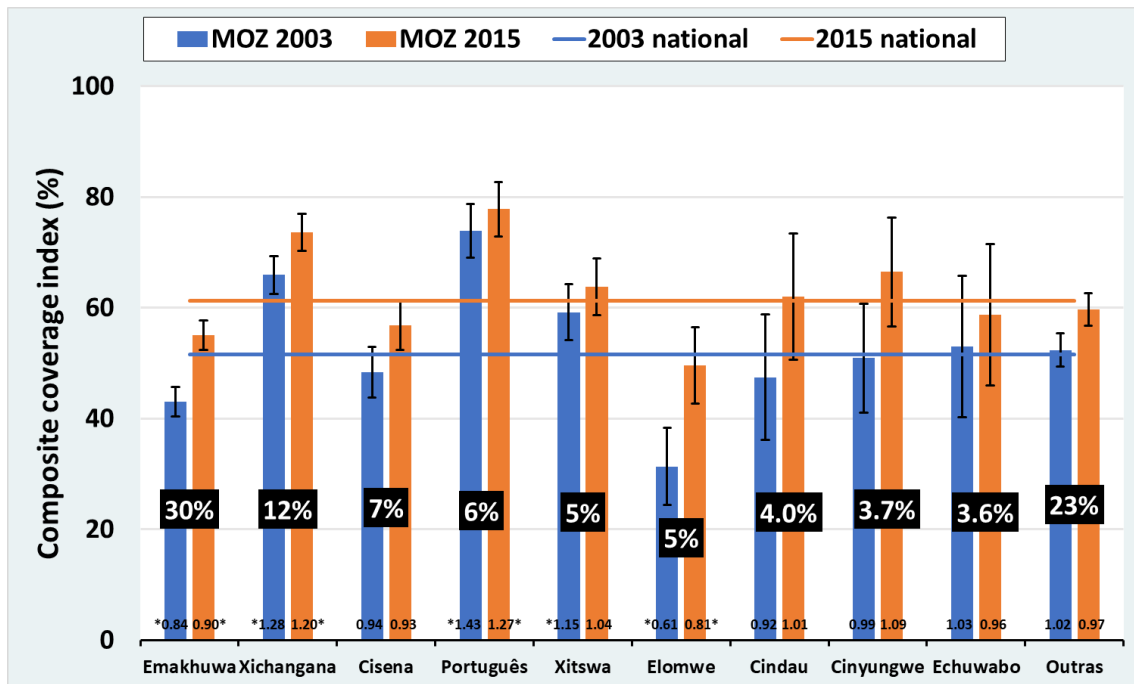
### Moldova



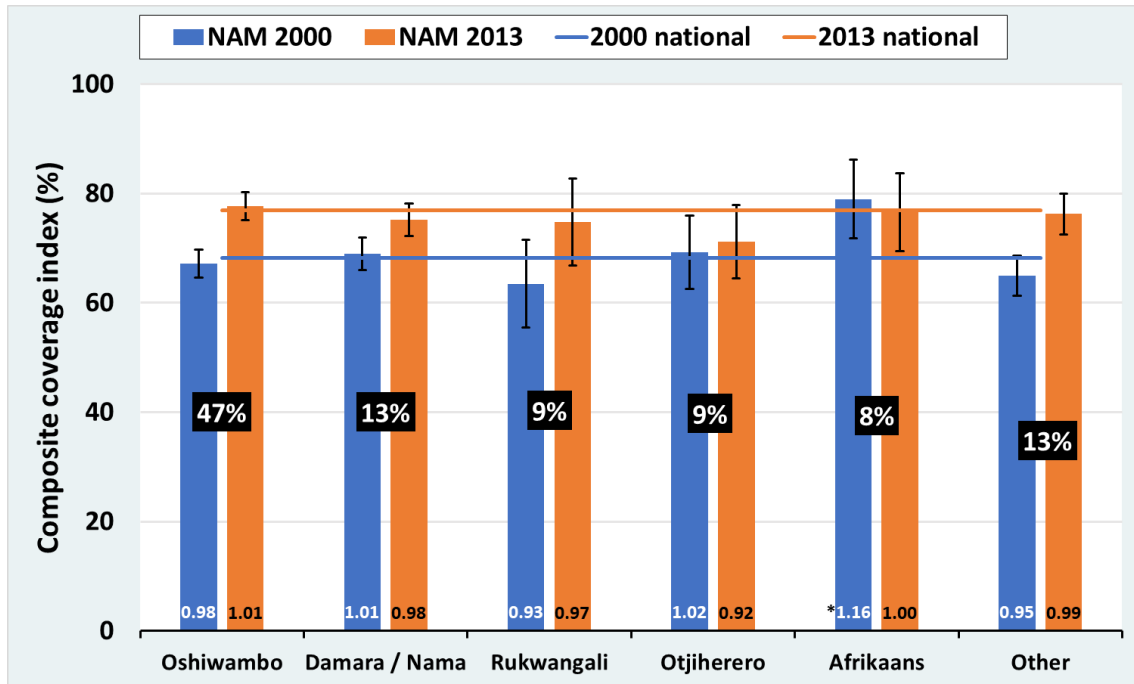
## Mongolia



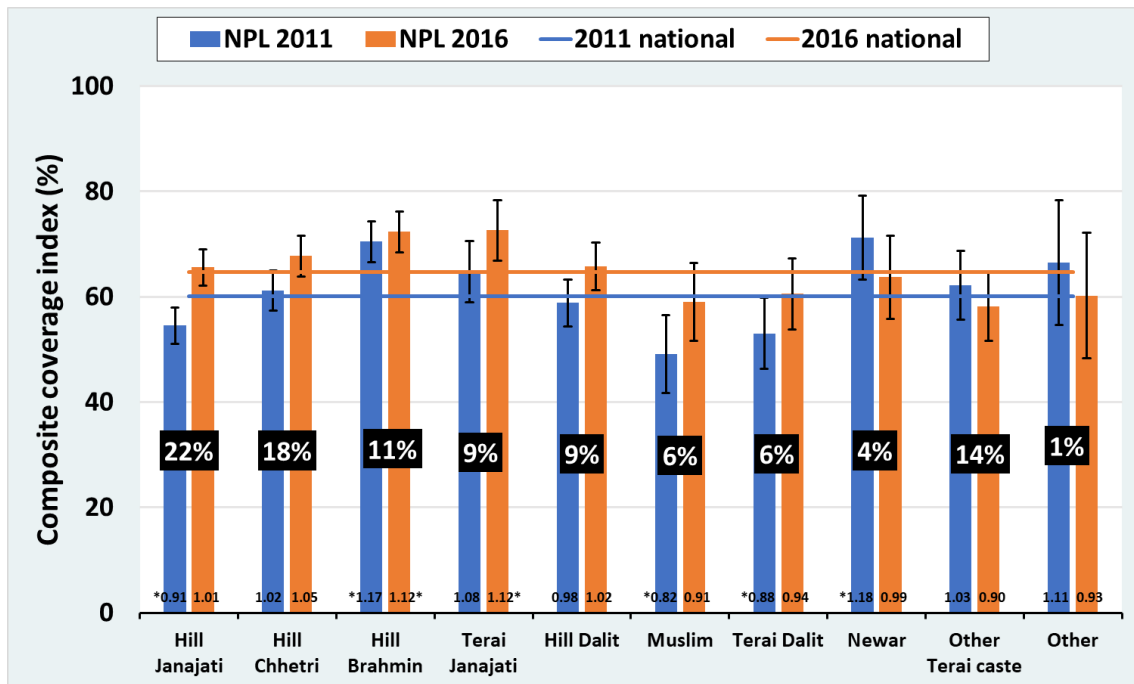
## Mozambique



## Namibia

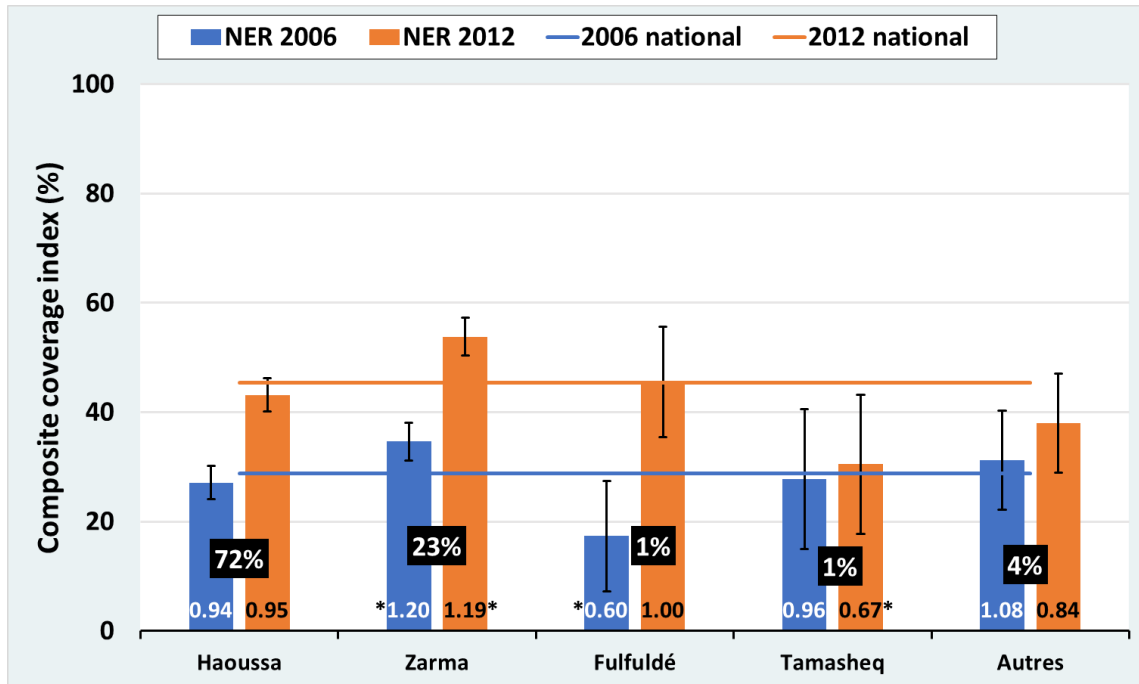


## Nepal

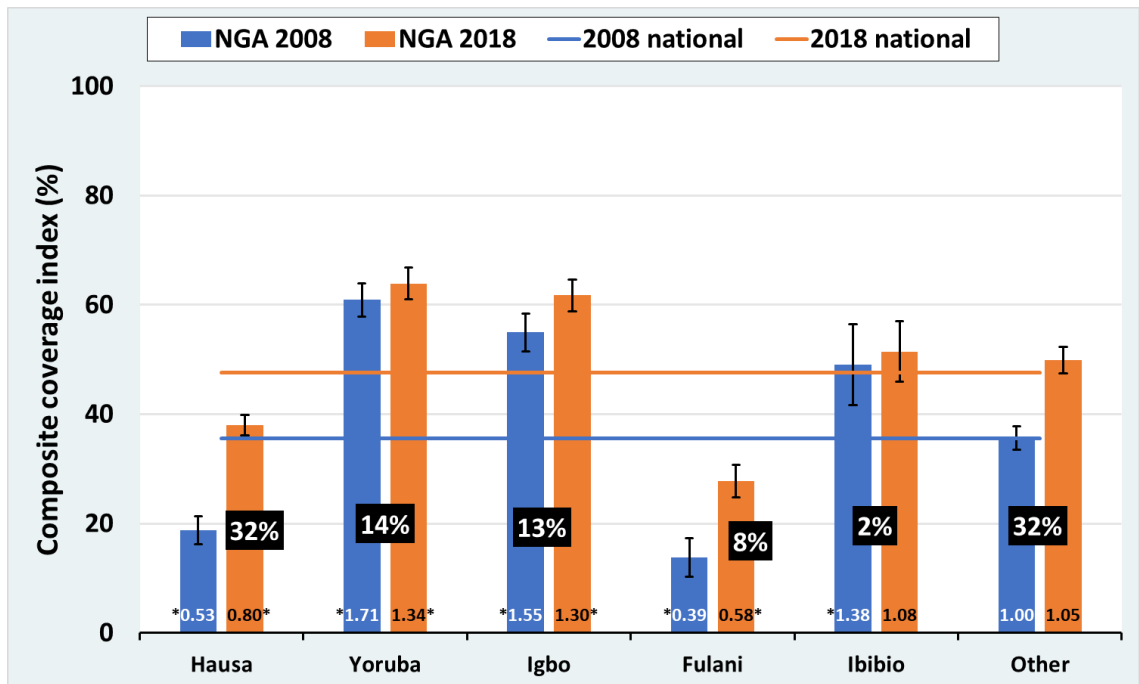




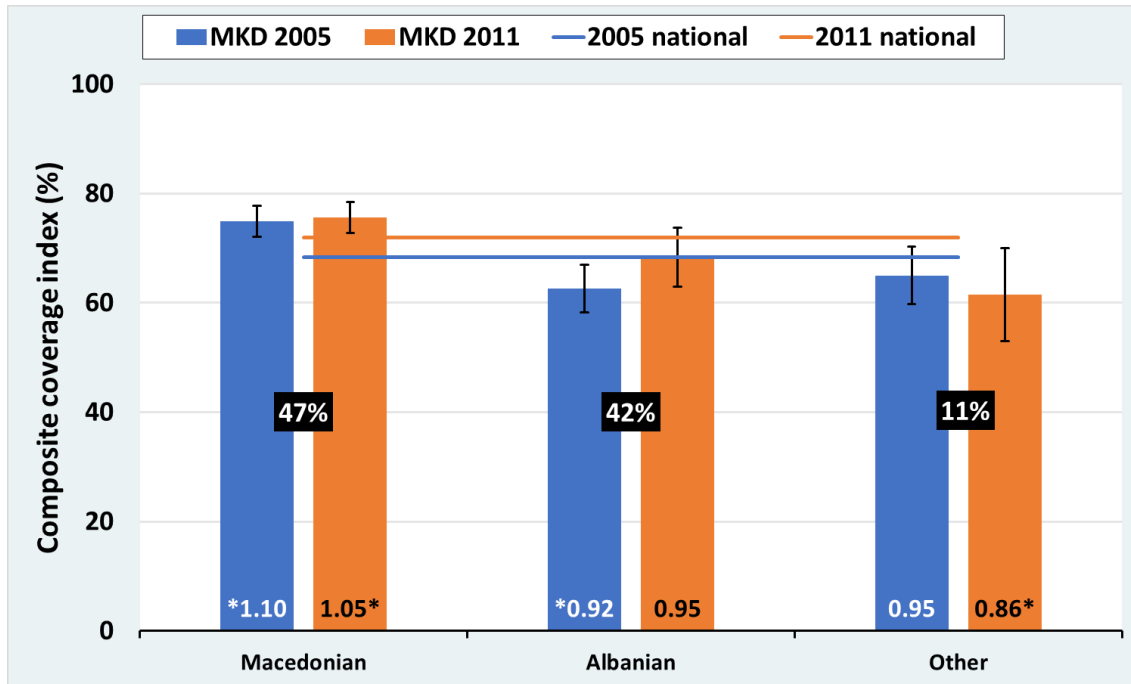
## Niger



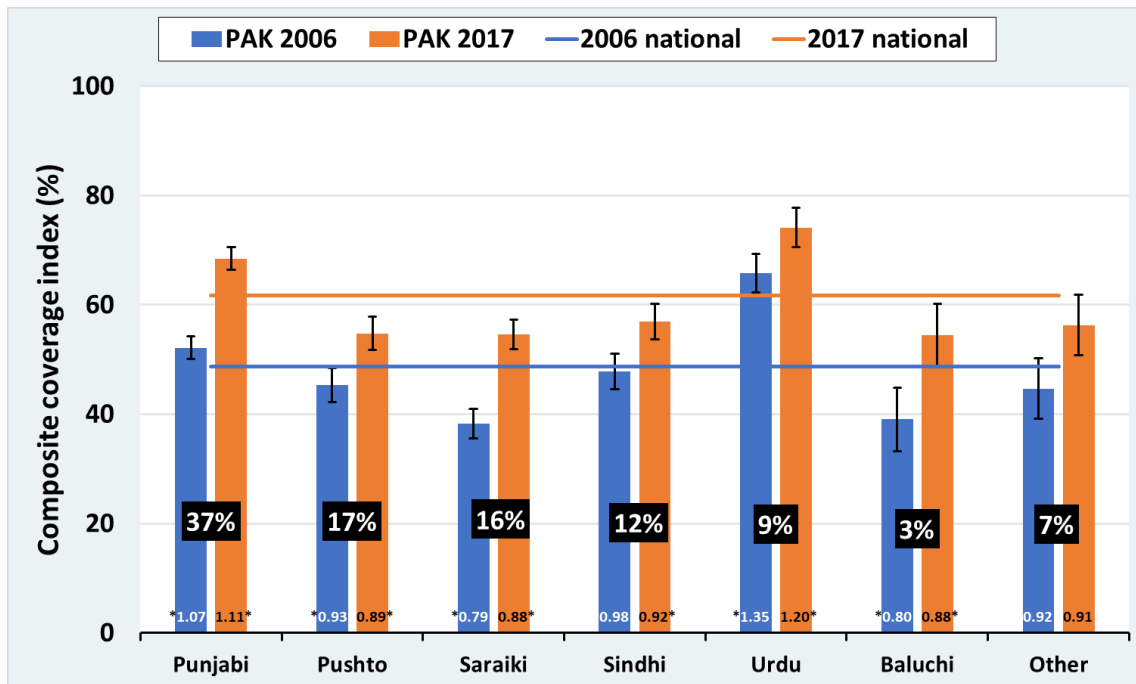
## Nigeria



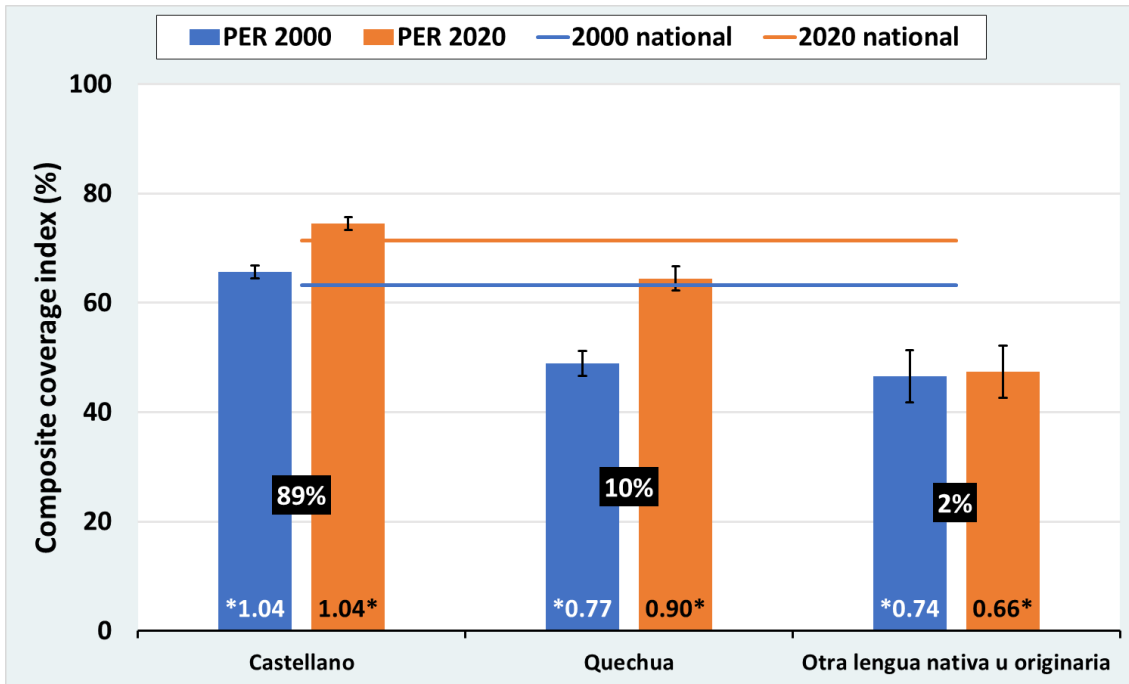
North Macedonia



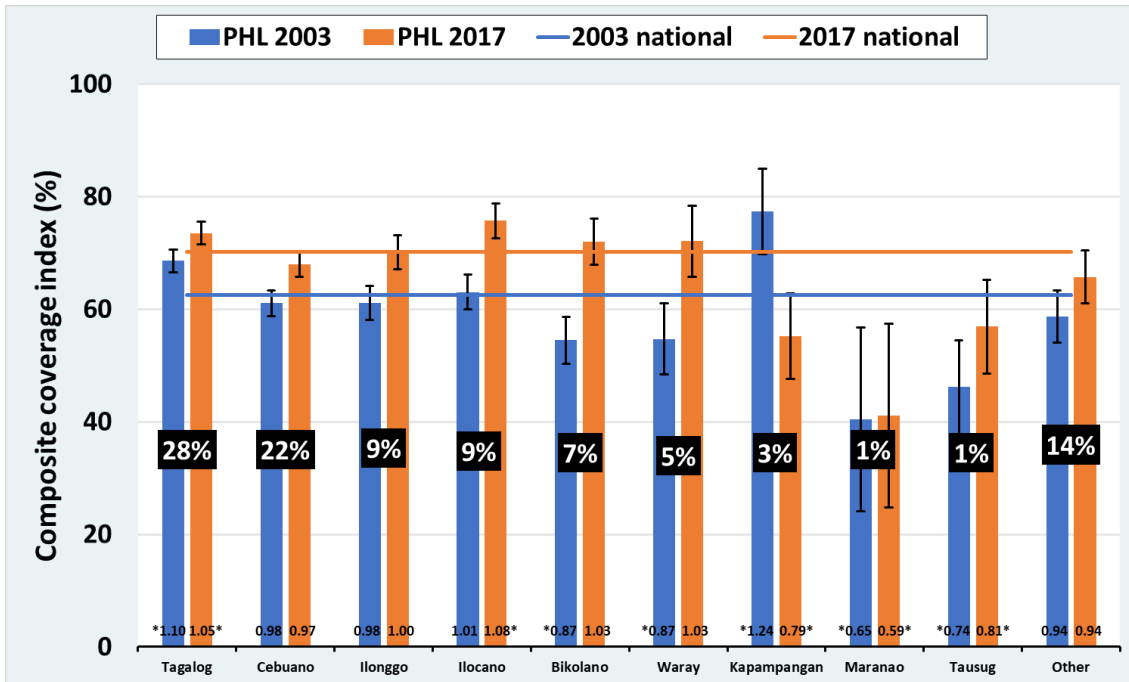
Pakistan



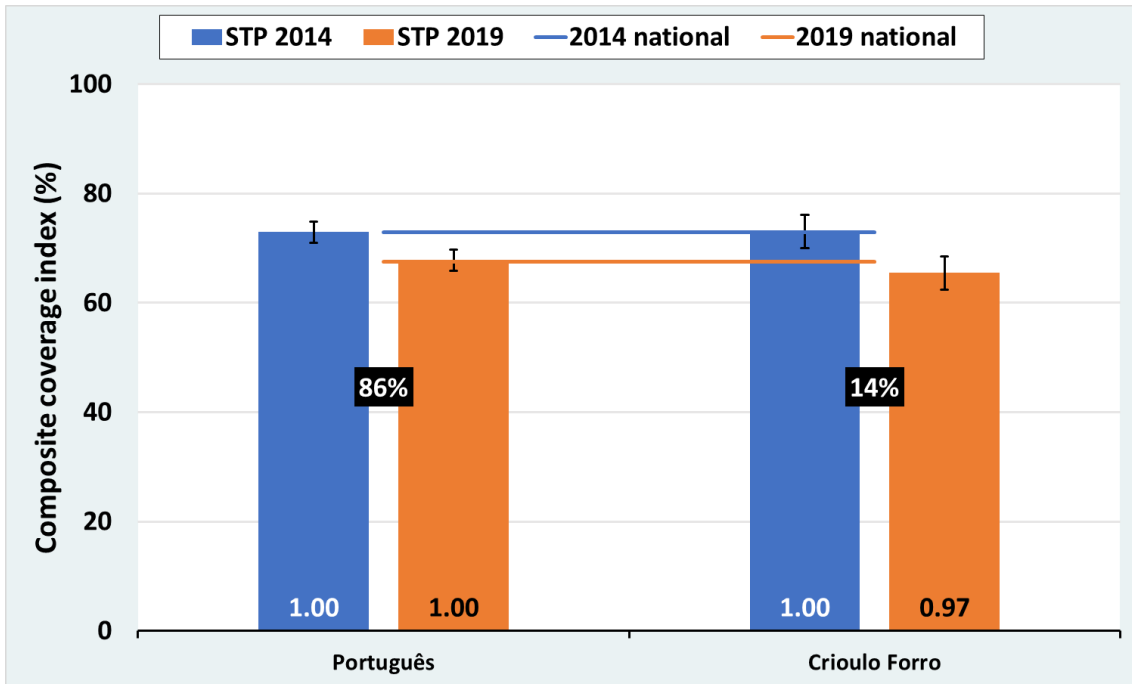
Peru



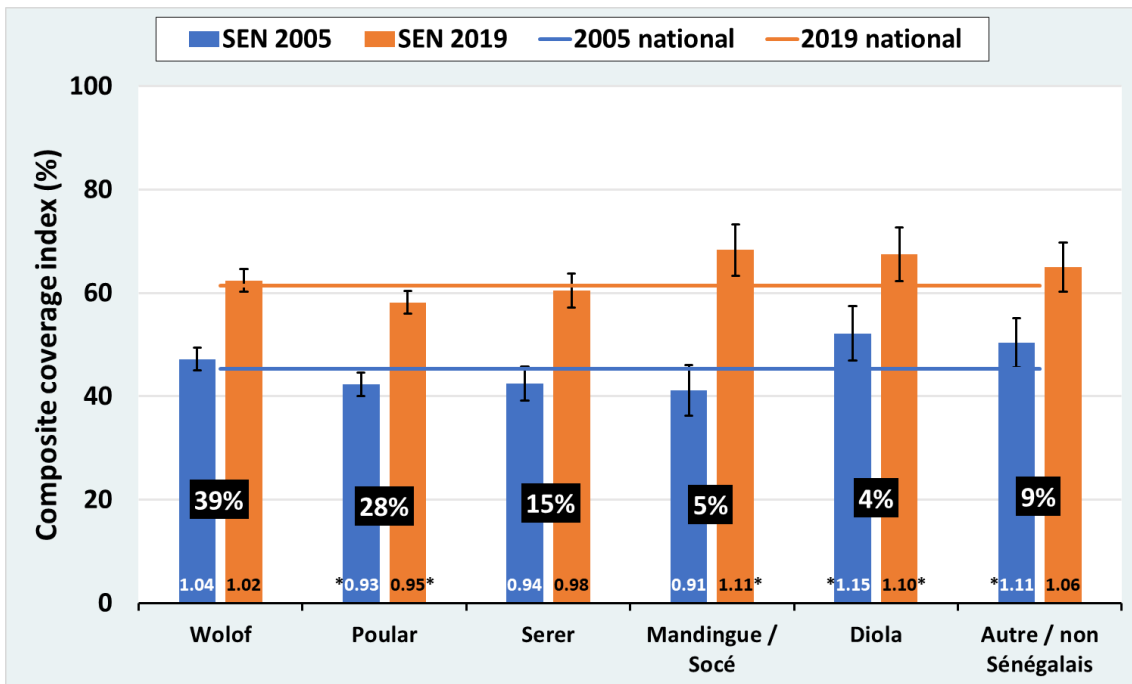
Philippines



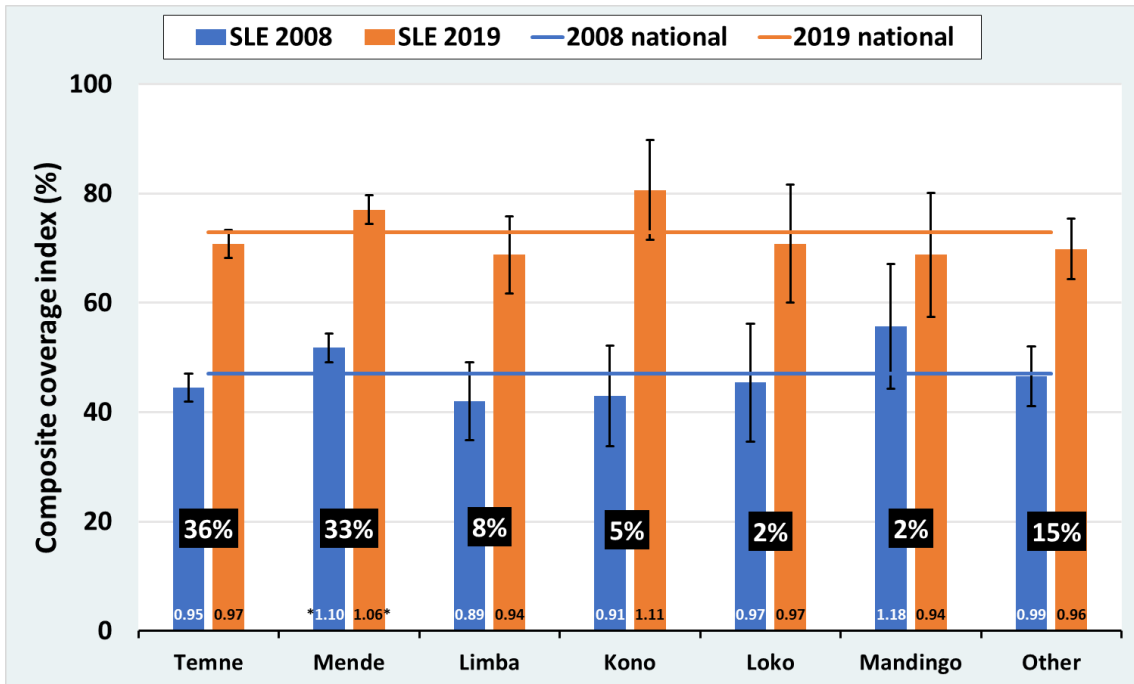
Sao Tome and Principe



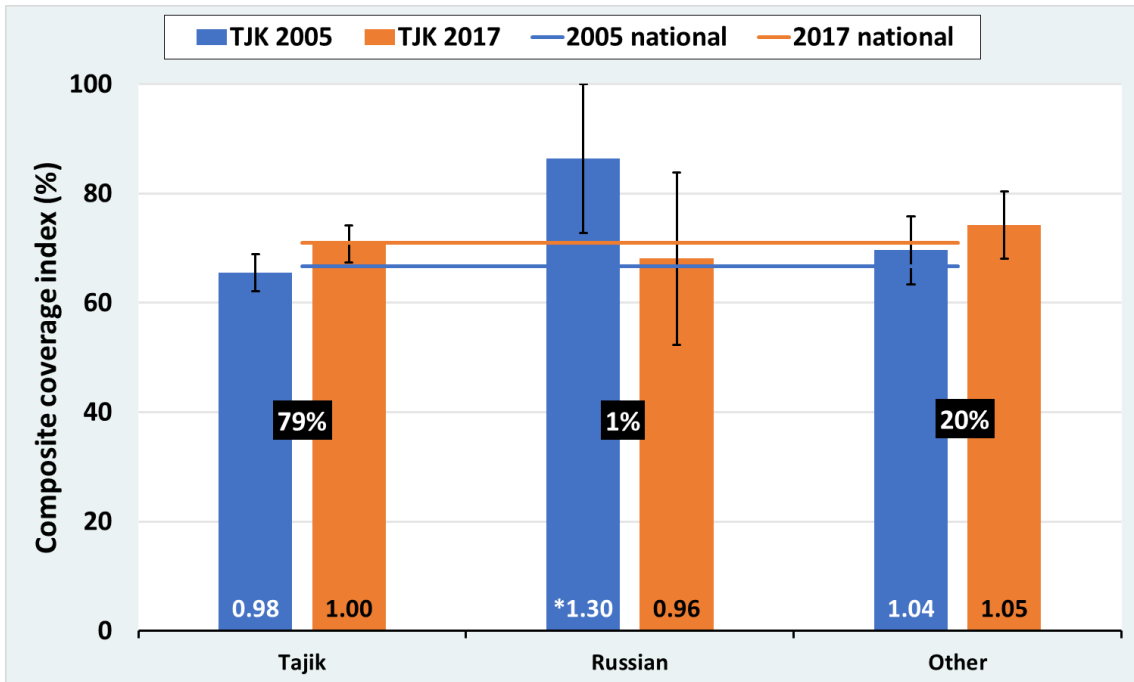
Senegal



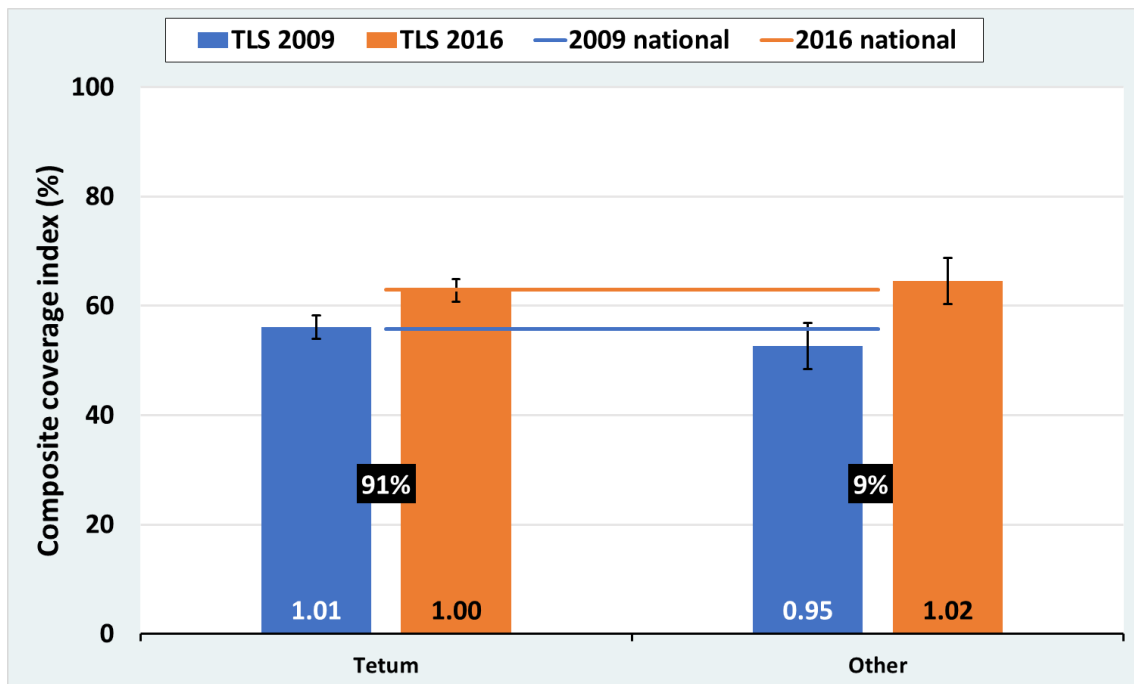
Sierra Leone



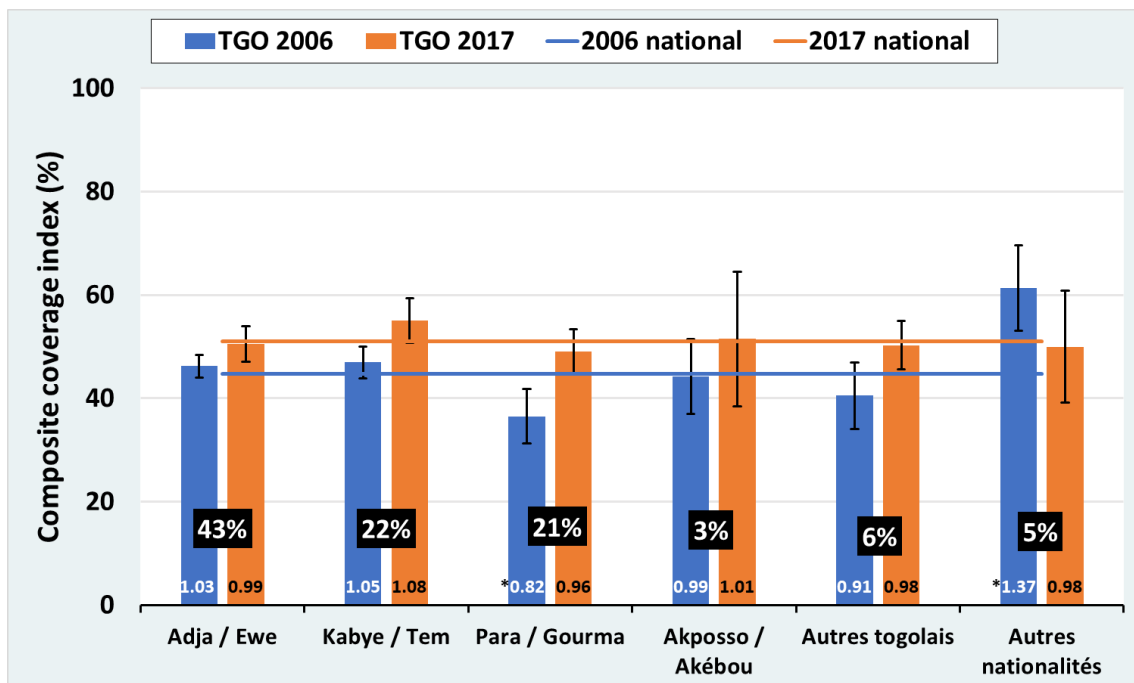
Tajikistan



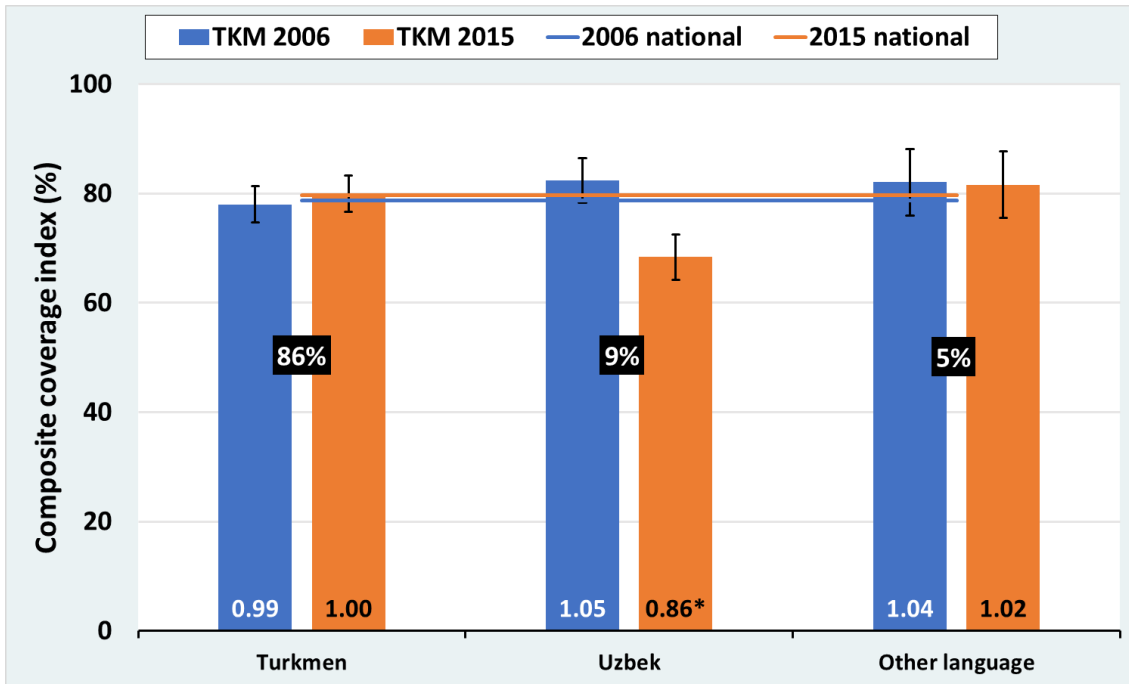
Timor-Leste



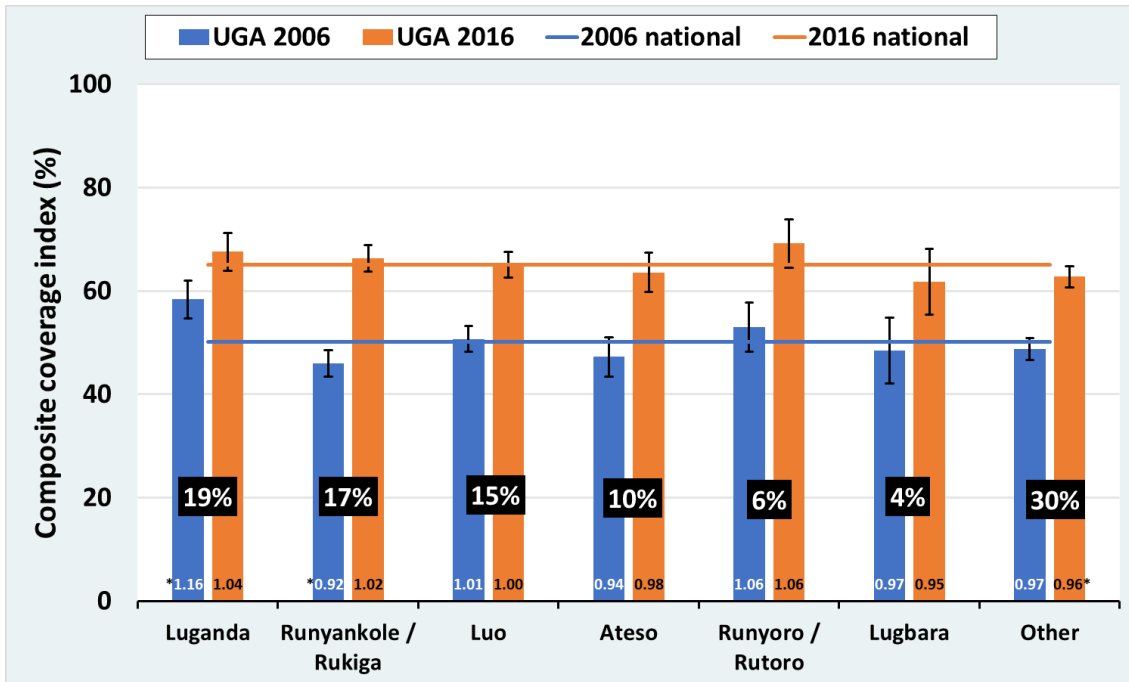
Togo



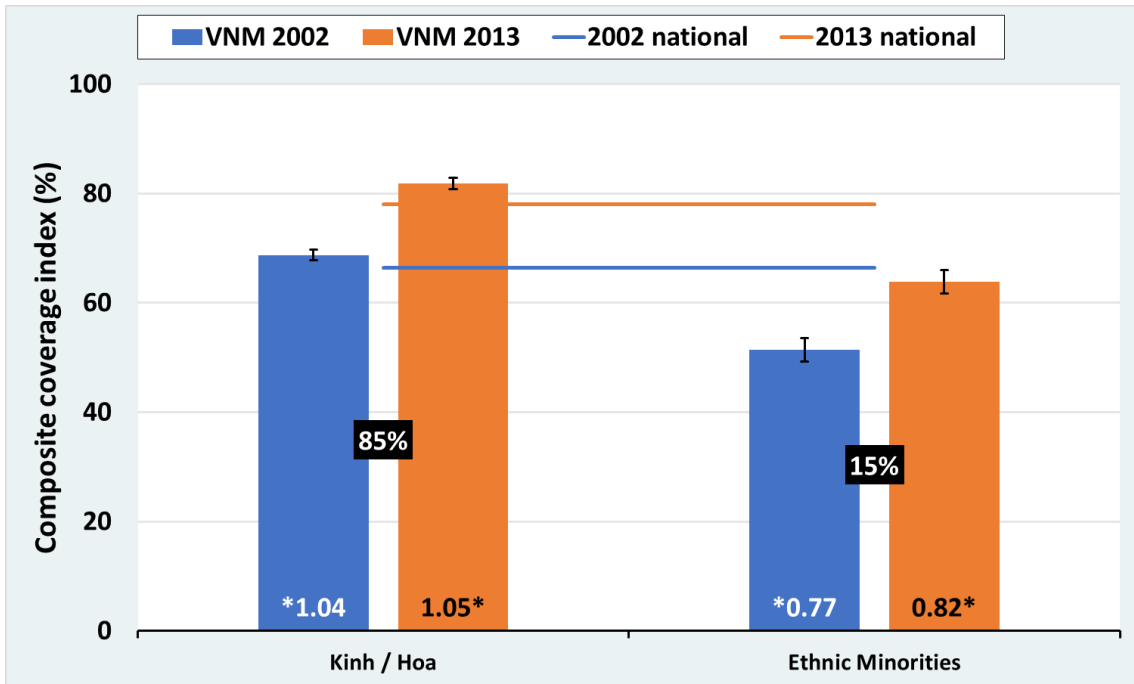
Turkmenistan



Uganda



Vietnam



Zambia

