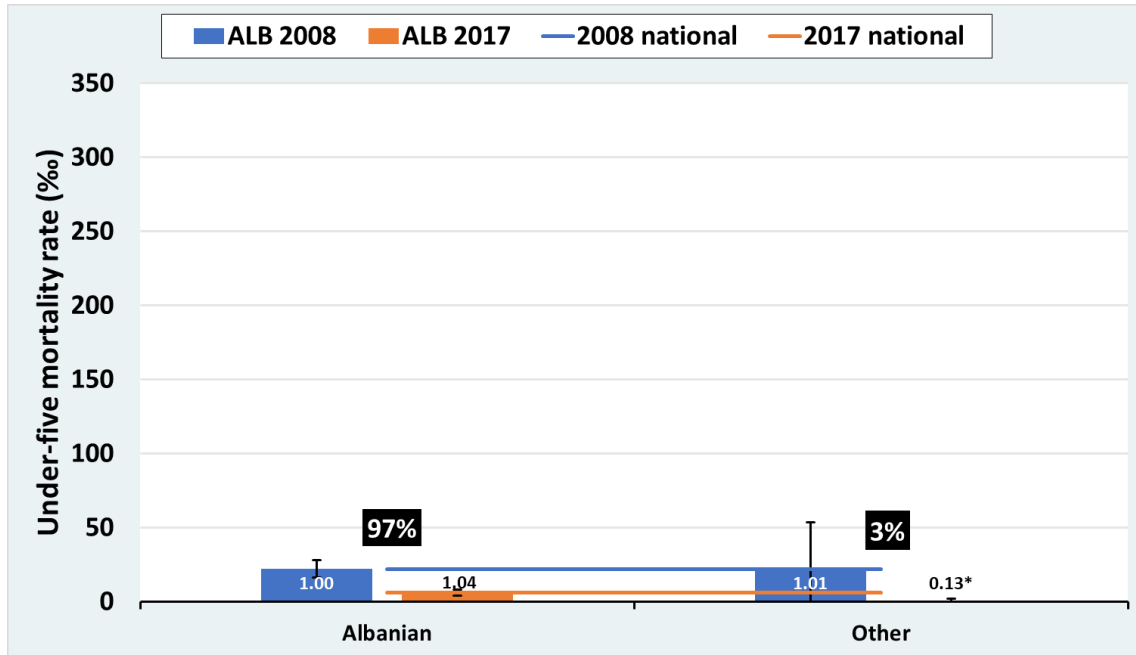
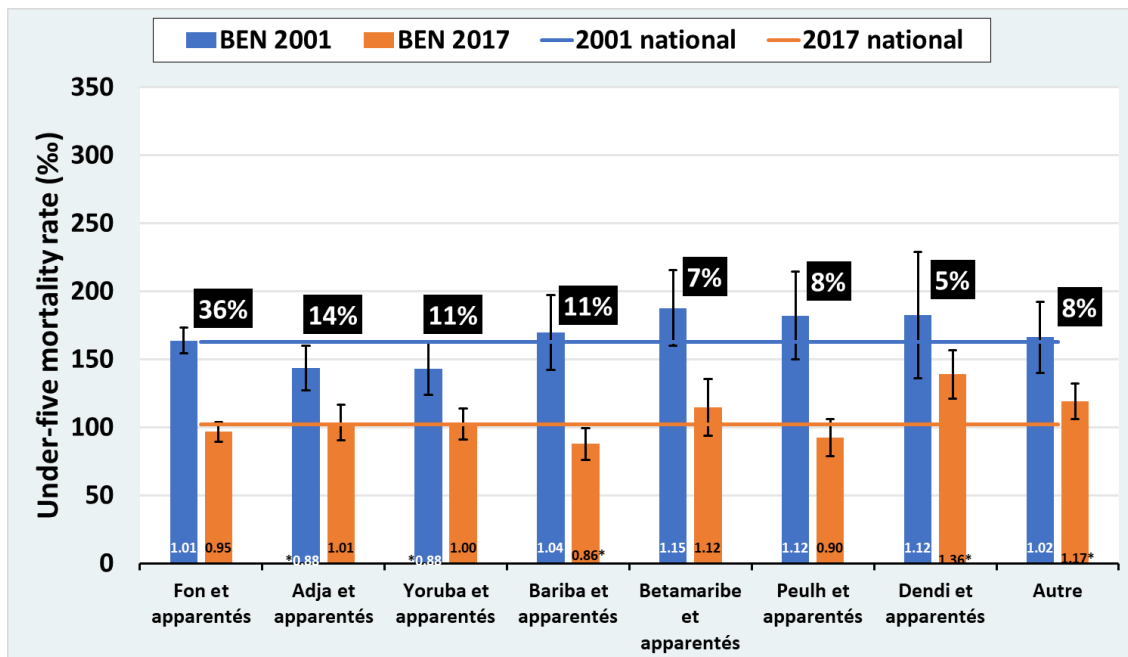


Supplementary figures 3. Under-five mortality rate by ethnic groups in the first and last surveys. Results for selected countries. The numbers in the black rectangles show the average proportion of the samples for each ethnic groups in the two surveys. The numbers at the bottom of the bars show the ratio between the rate in a particular ethnic group and the national rate for that point in time (* statistically significant in relation to the respective national average).

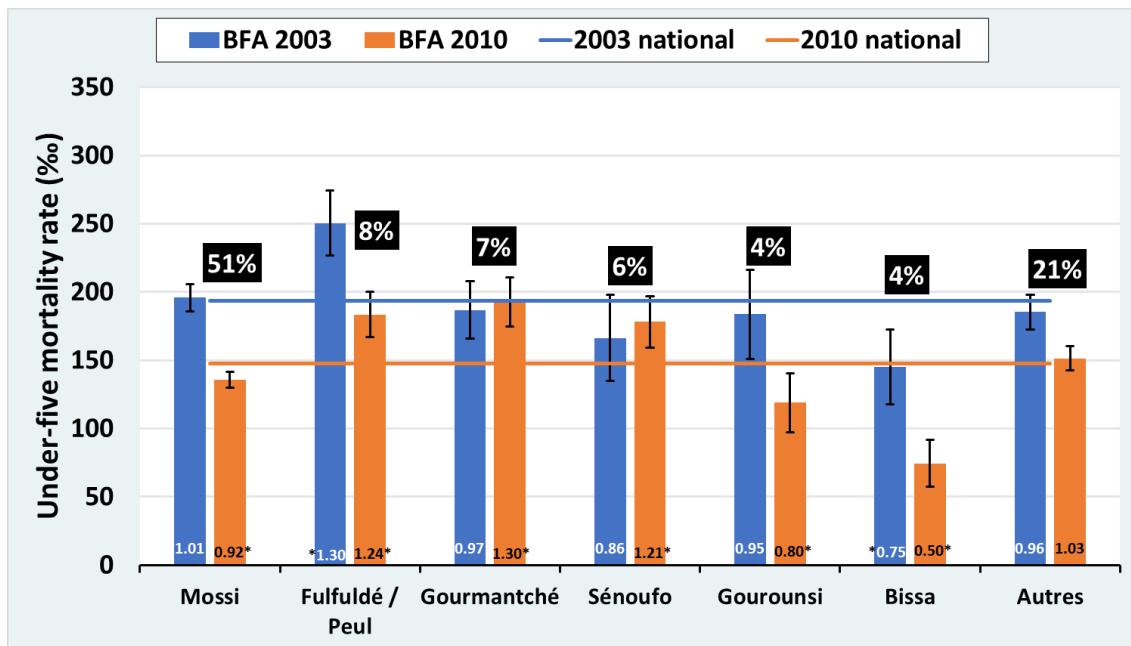
Albania



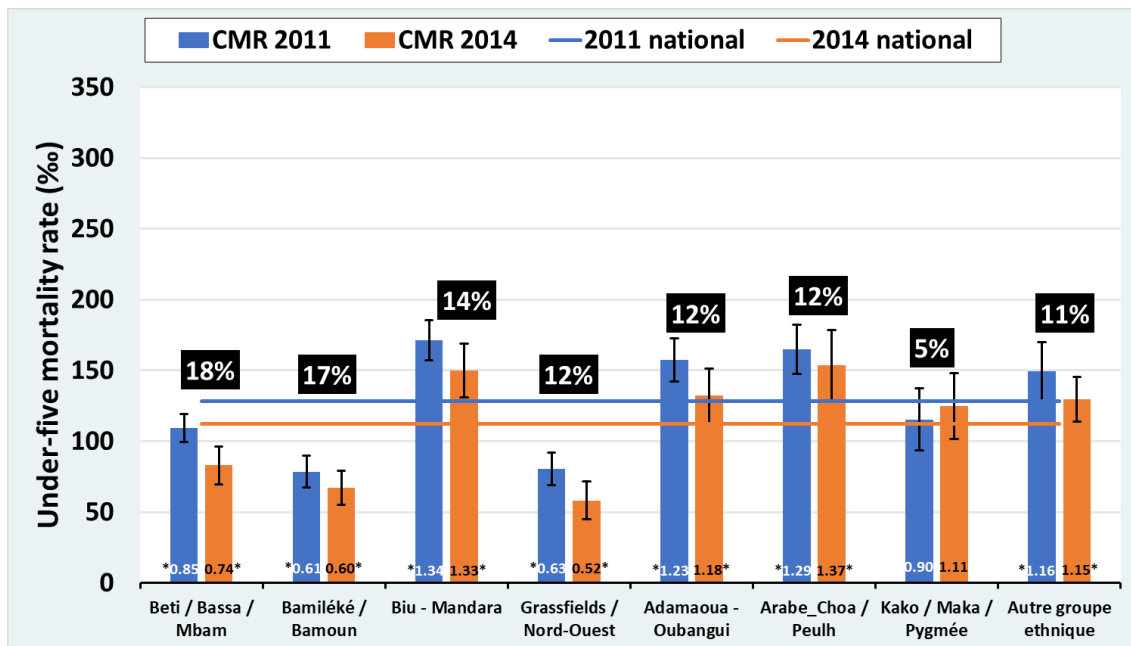
Benin



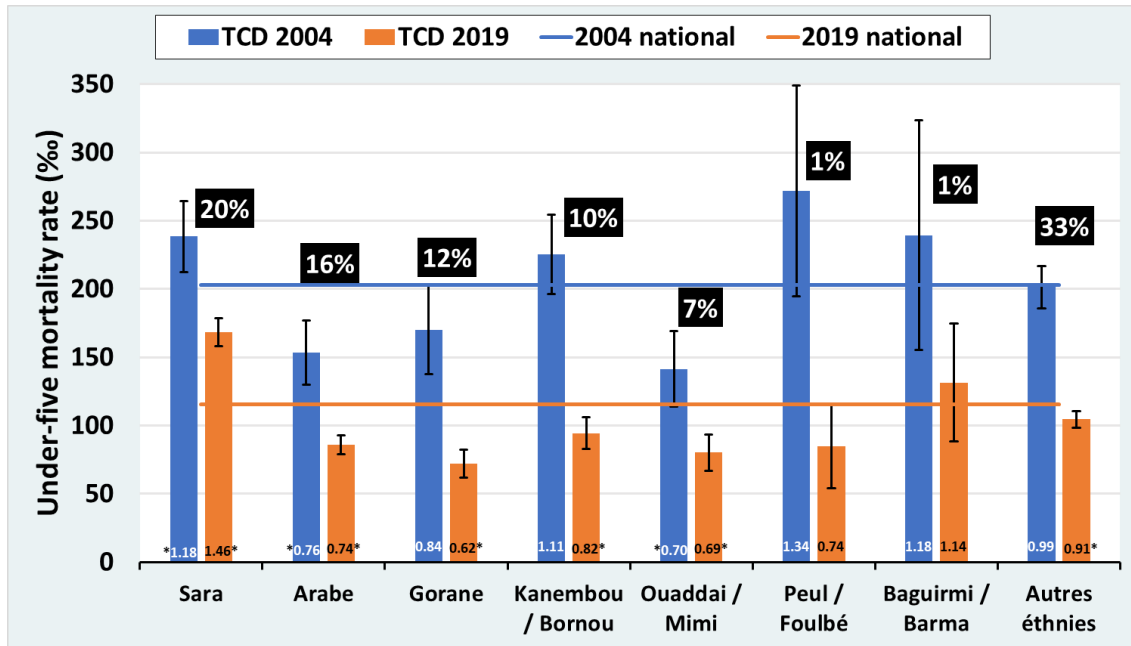
Burkina Faso



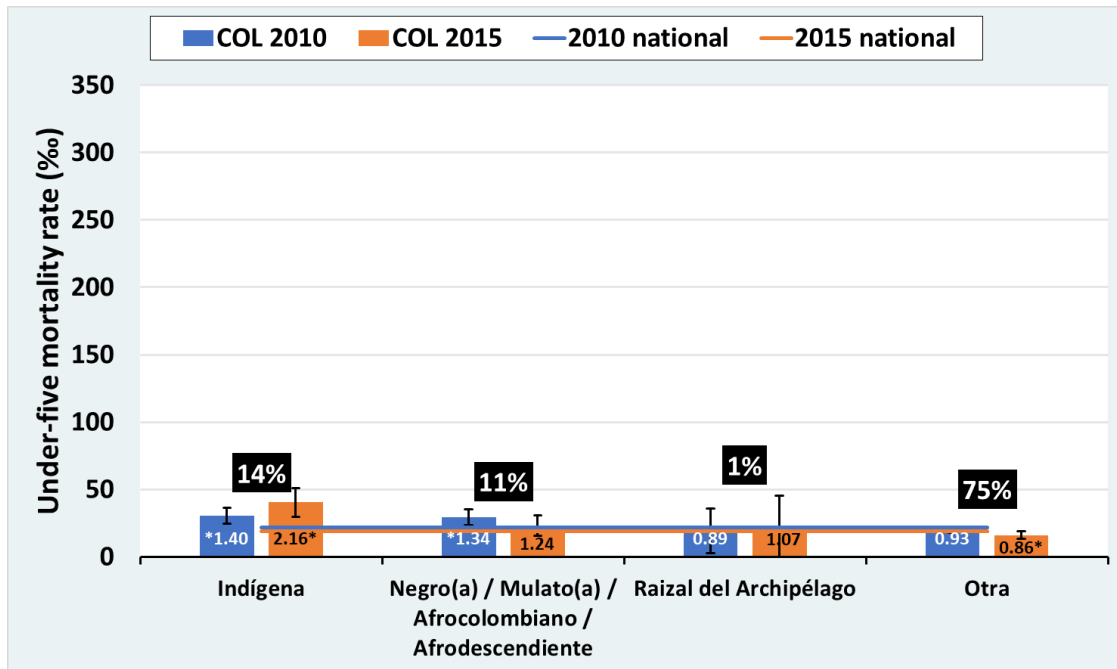
Cameroon



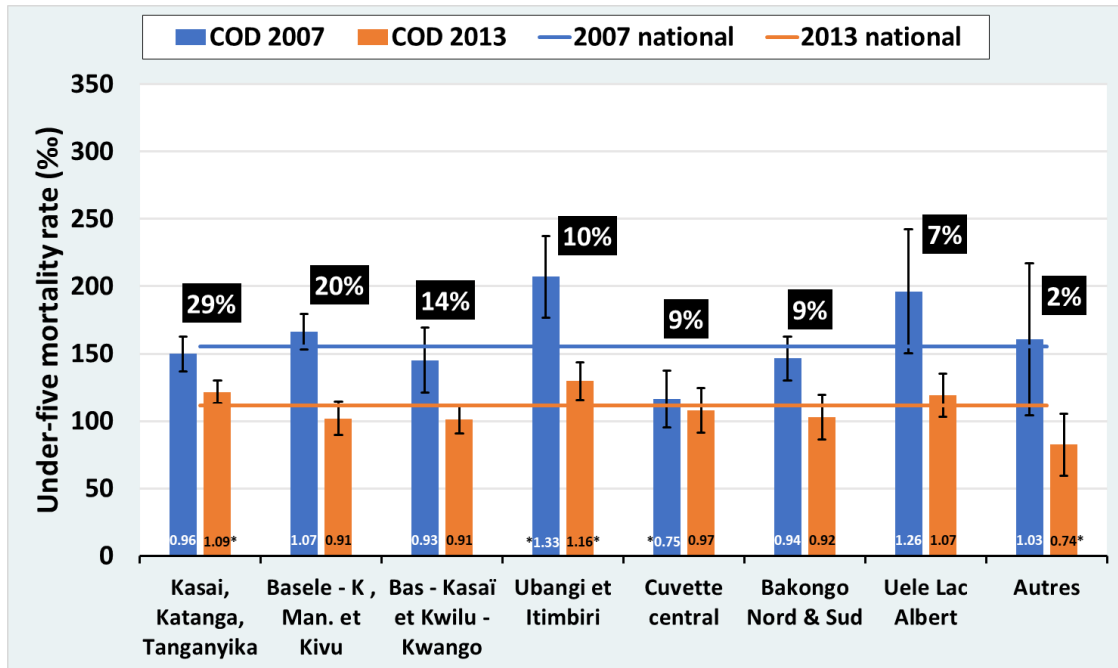
Chad



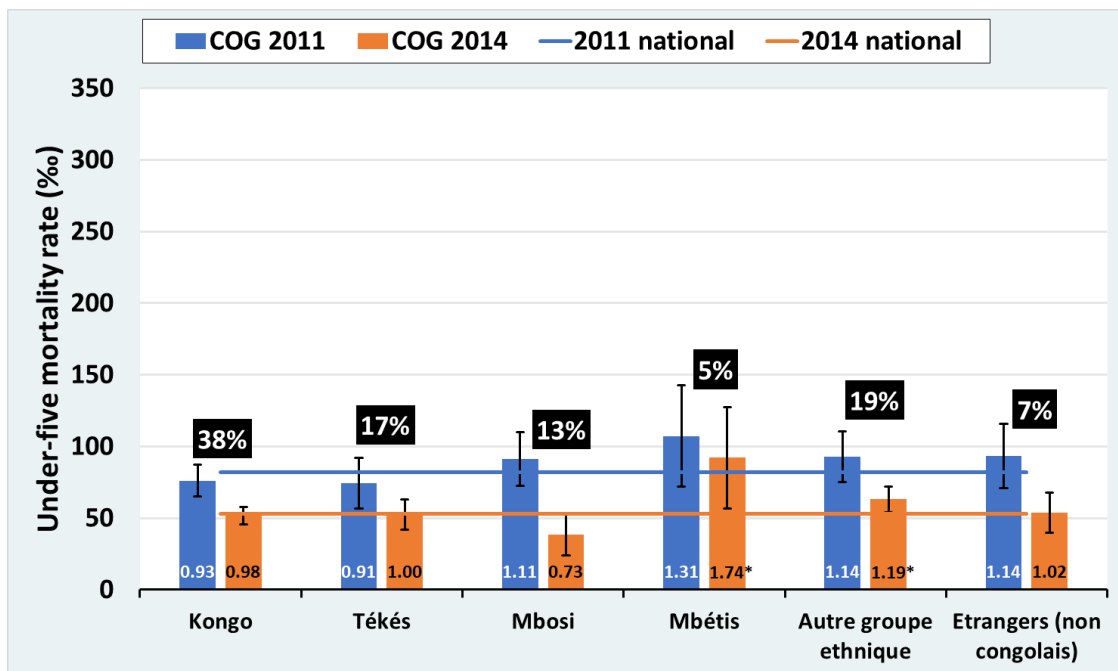
Colombia



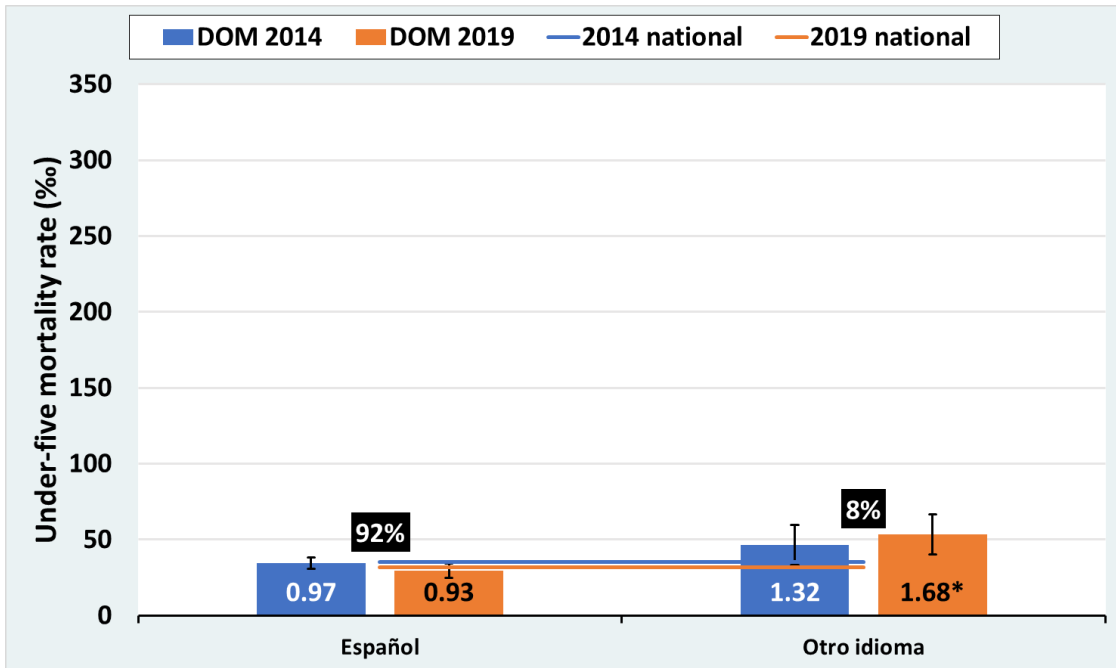
Congo DR



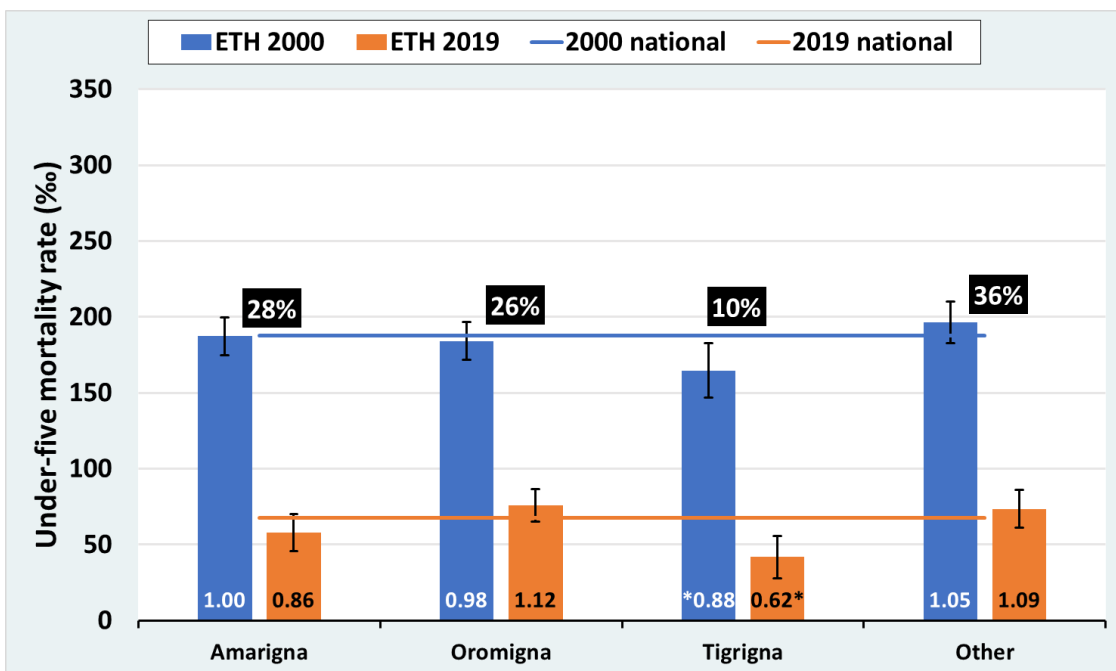
Congo Republic



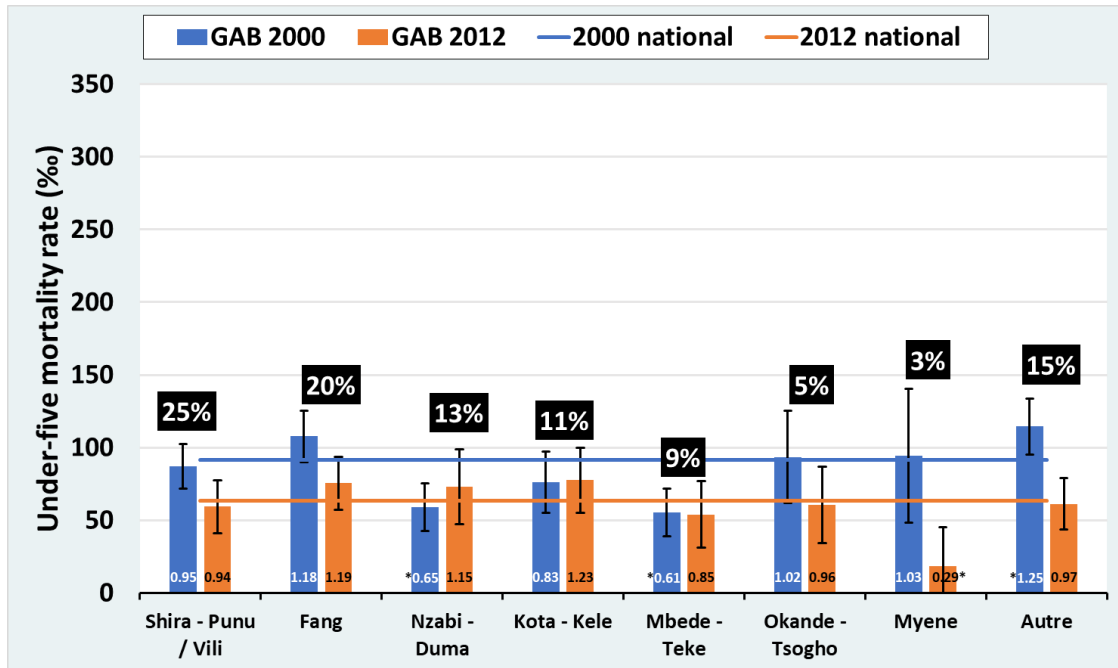
Dominican Republic



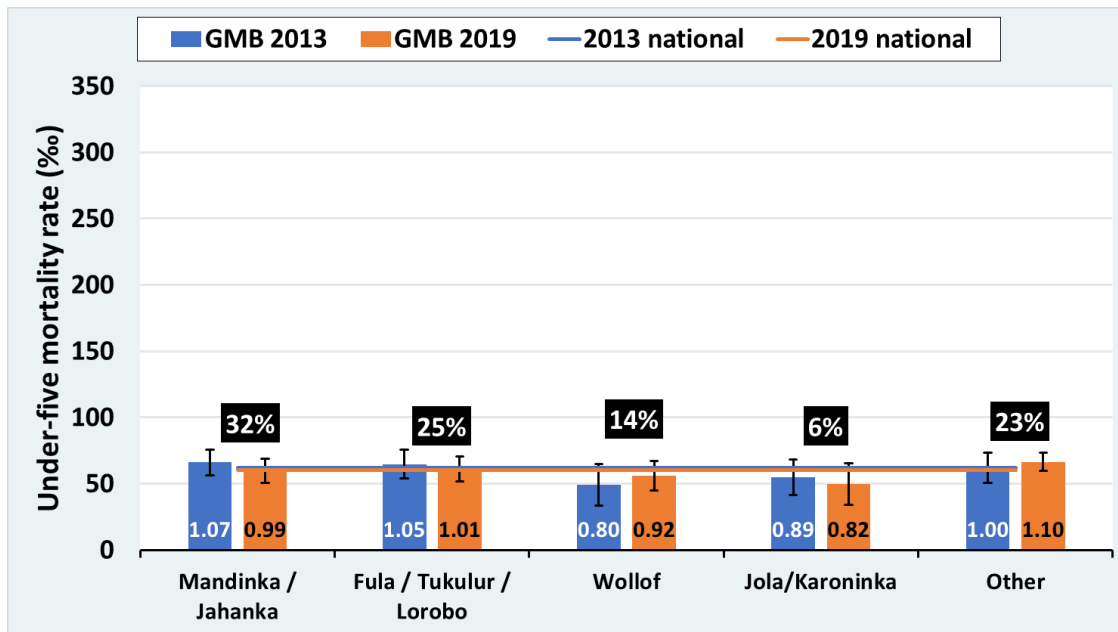
Ethiopia



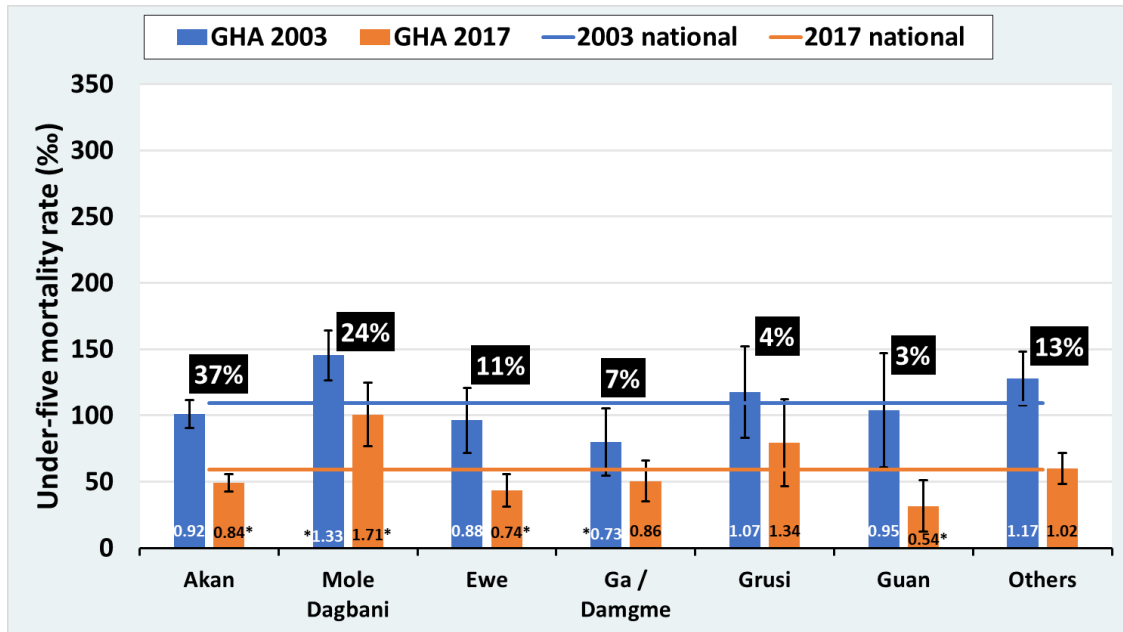
Gabon



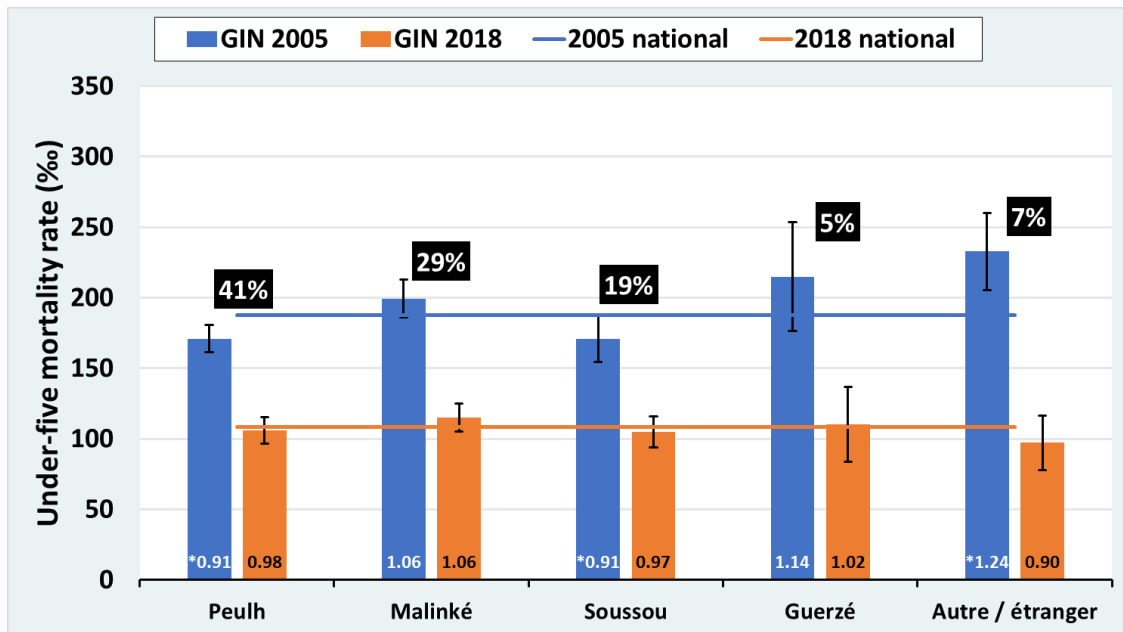
Gambia



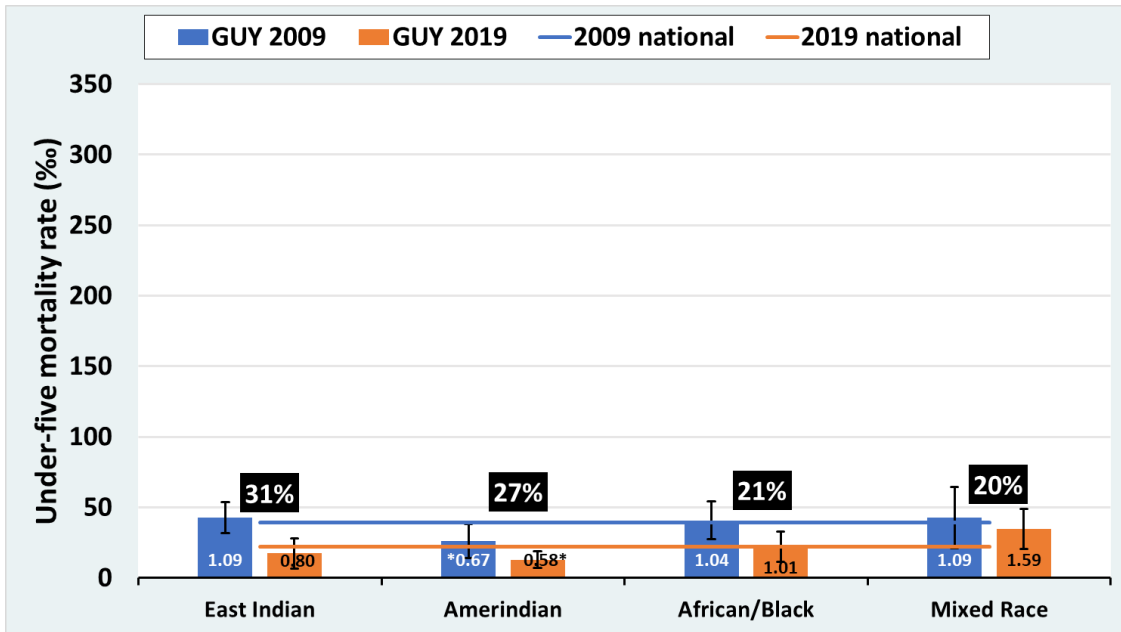
Ghana



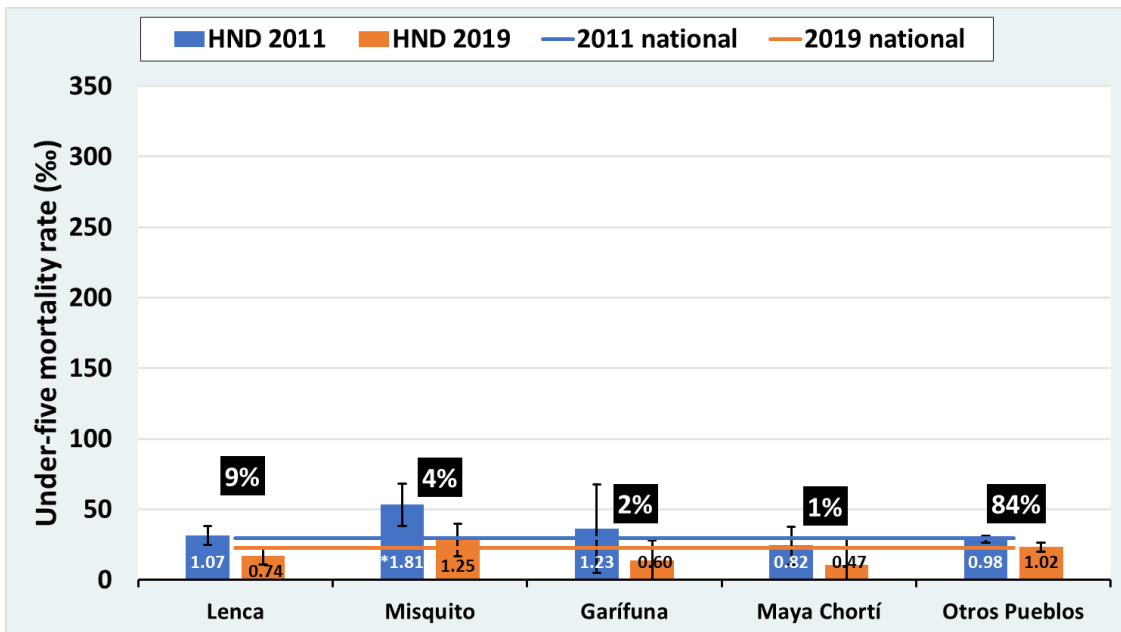
Guinea



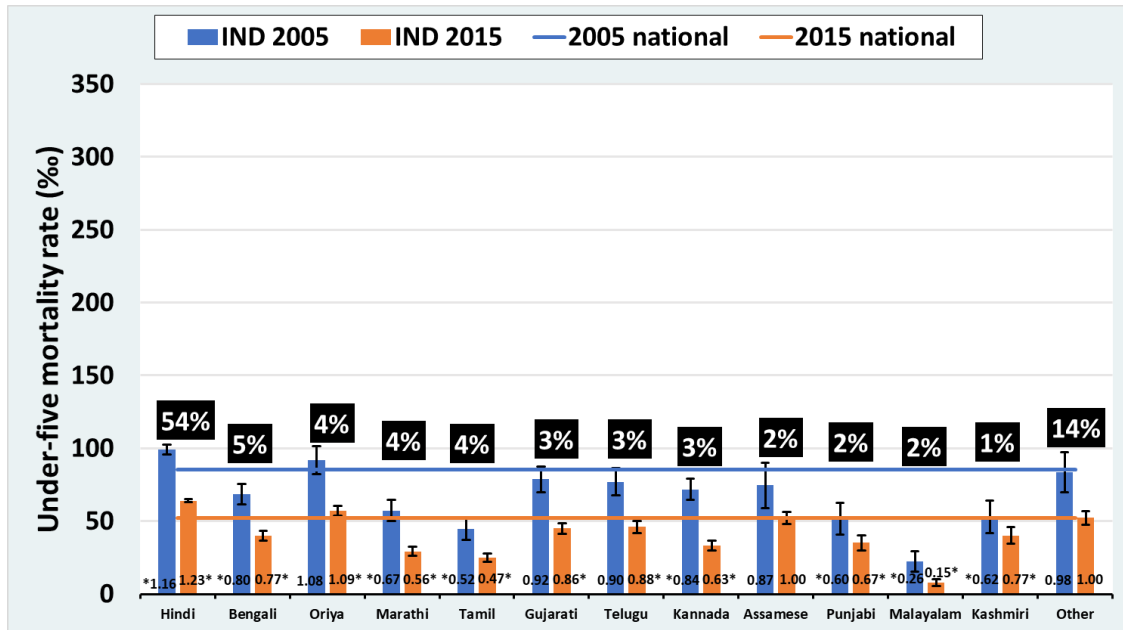
Guyana



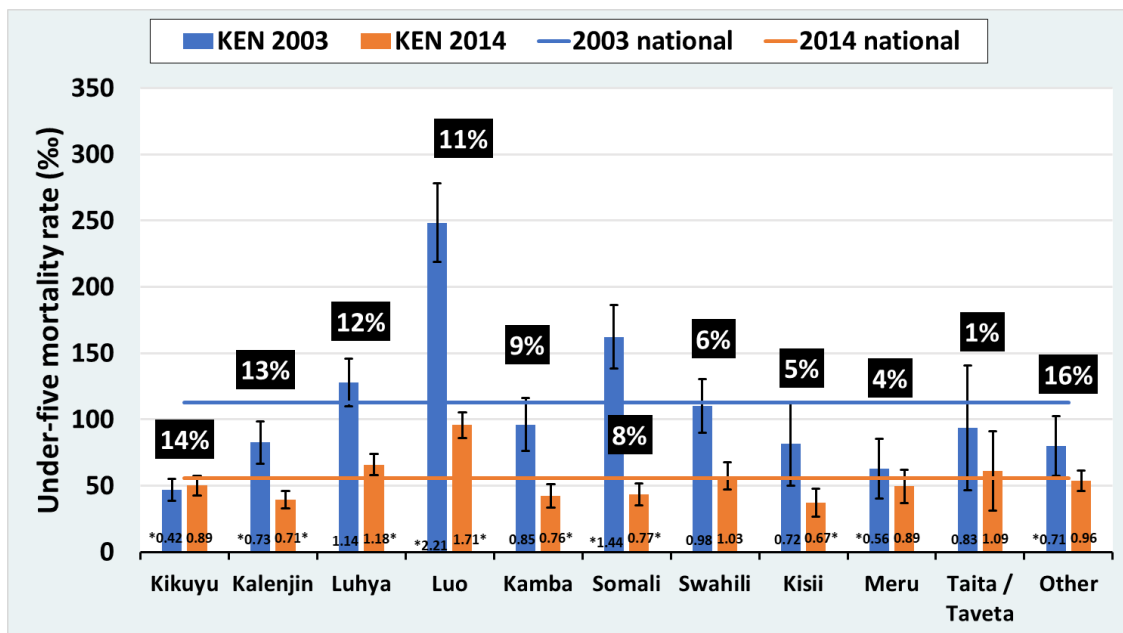
Honduras



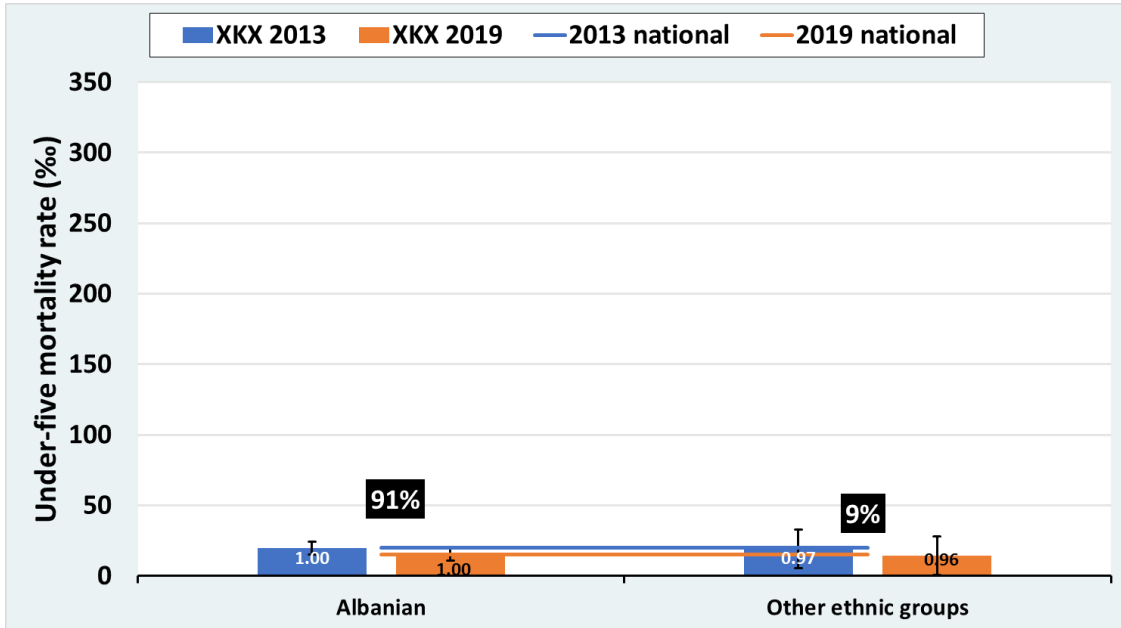
India



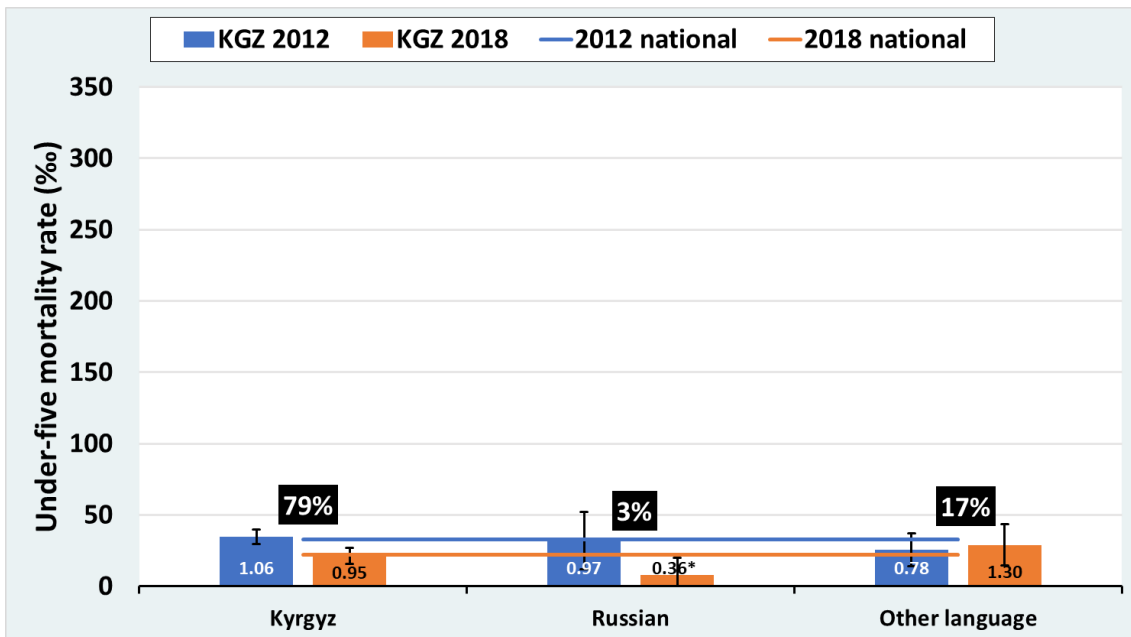
Kenya



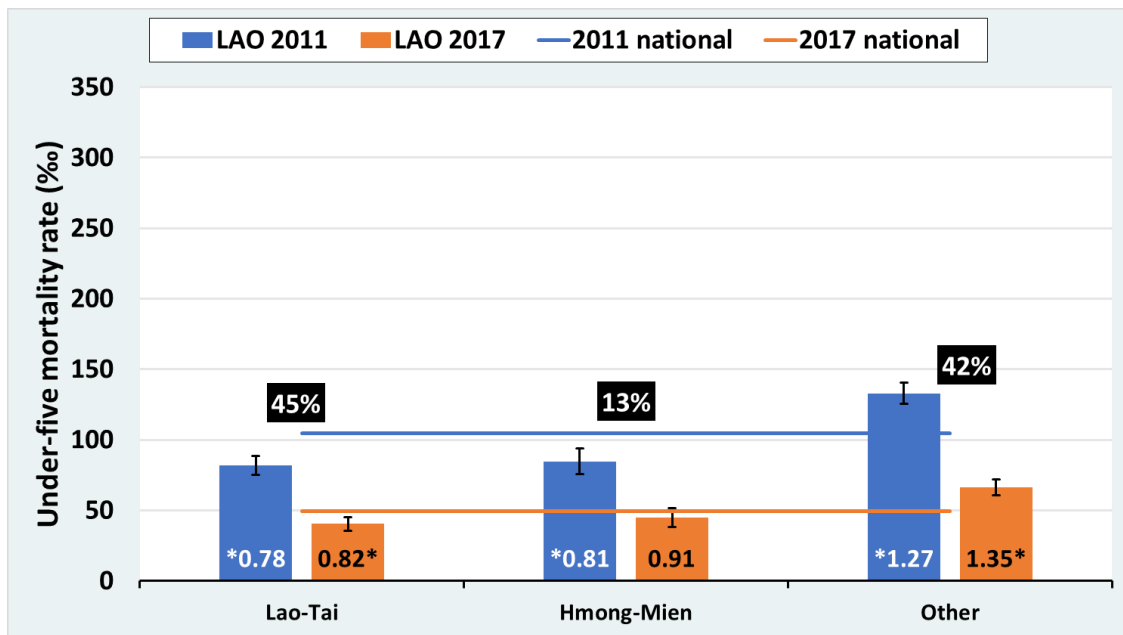
Kosovo



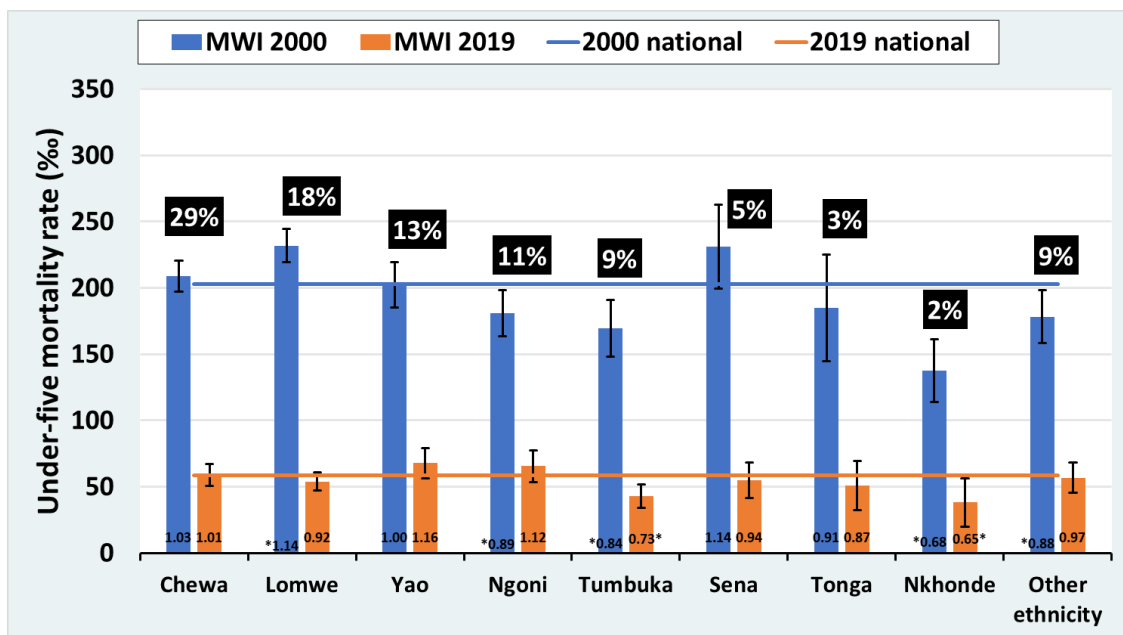
Kyrgyzstan



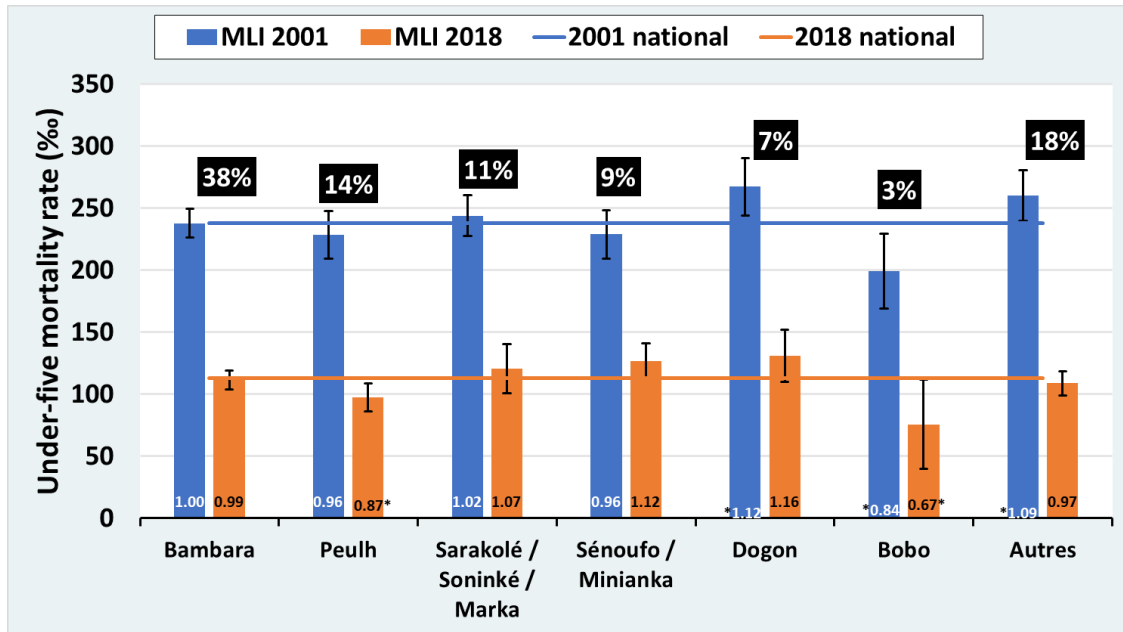
Lao PDR



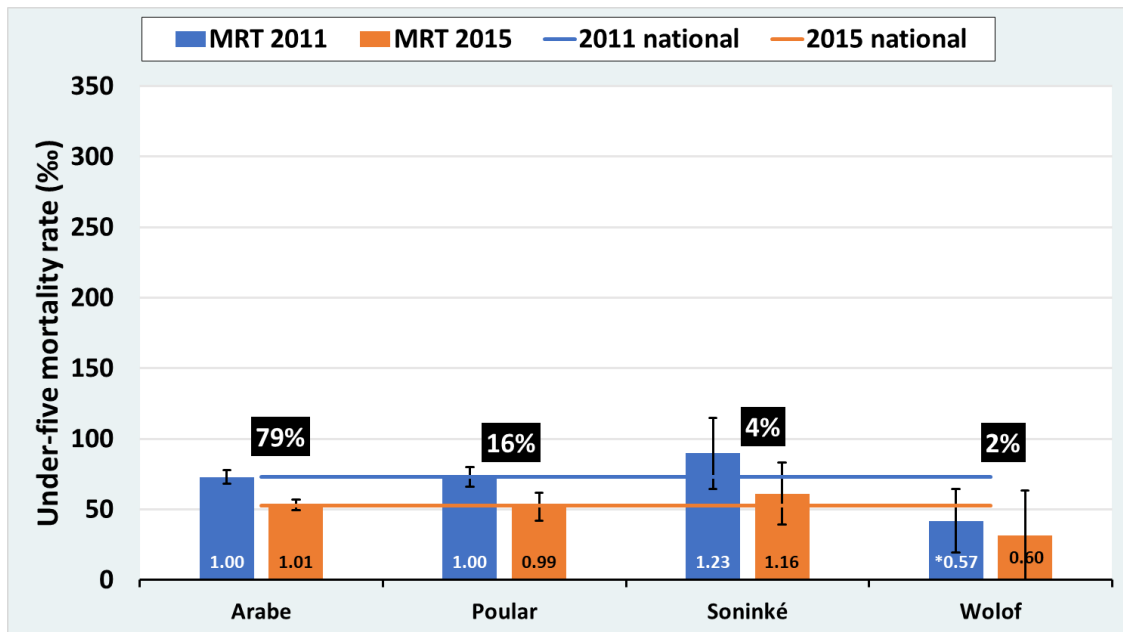
Malawi



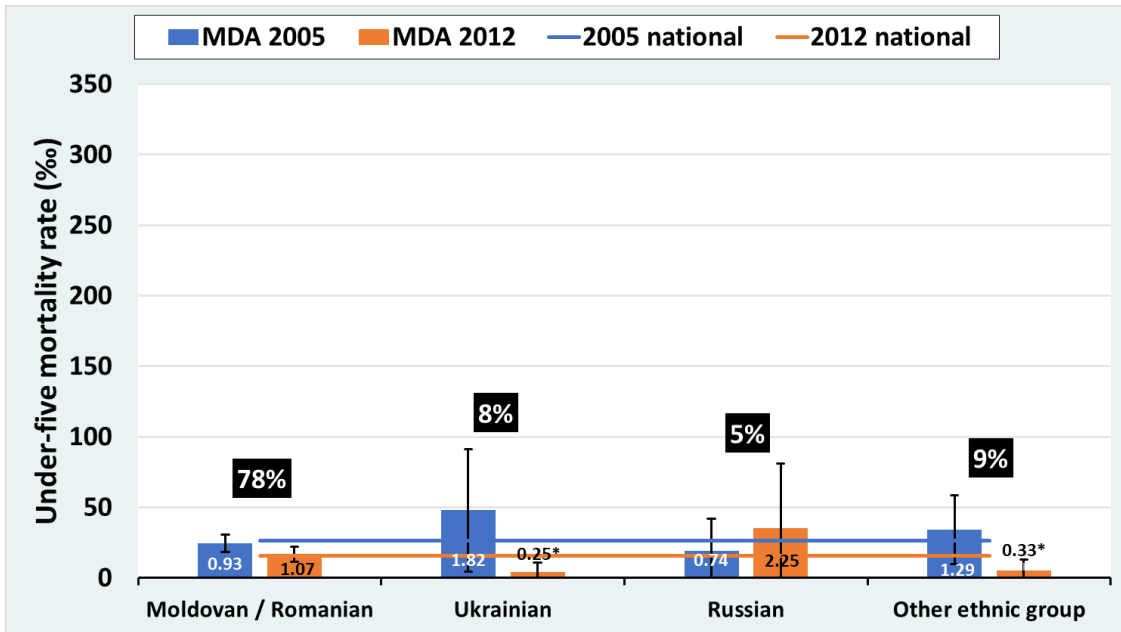
Mali



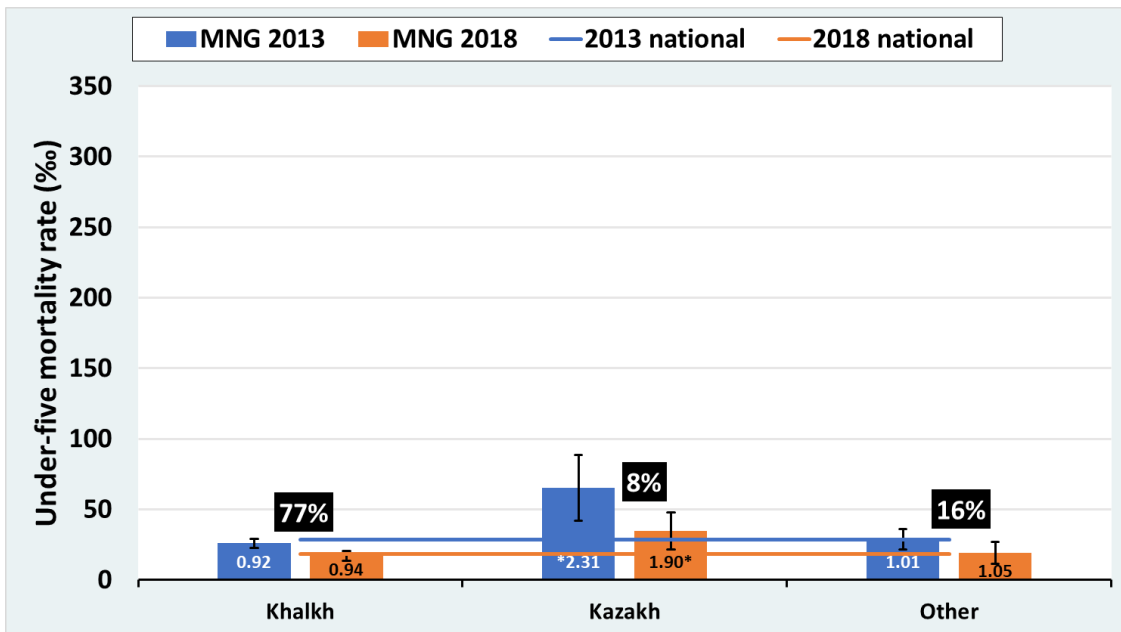
Mauritania



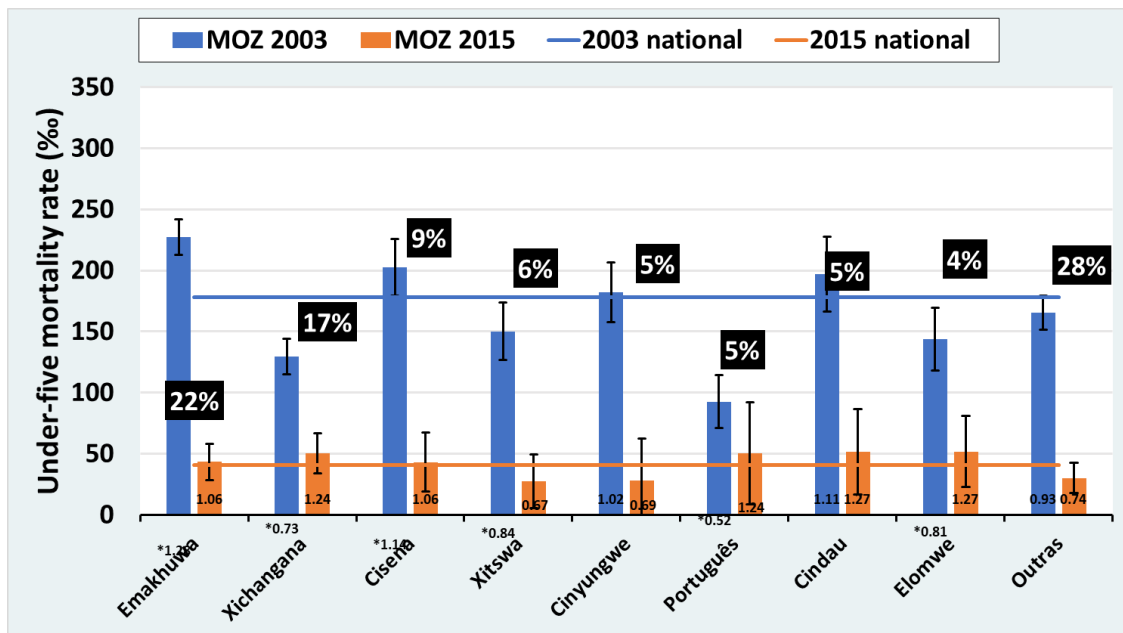
Moldova



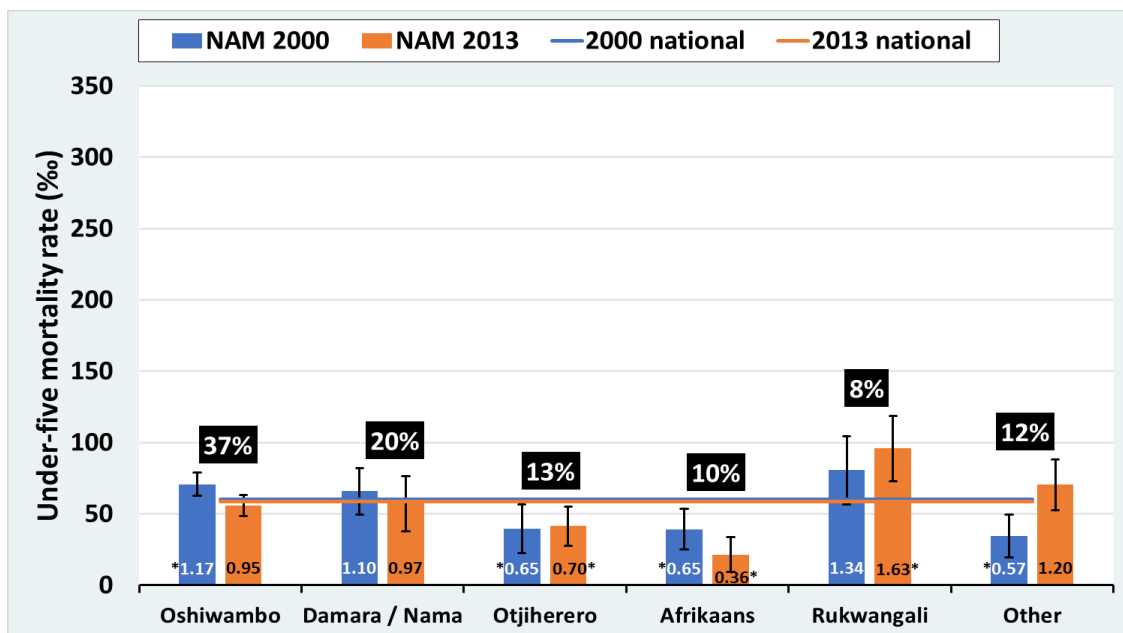
Mongolia



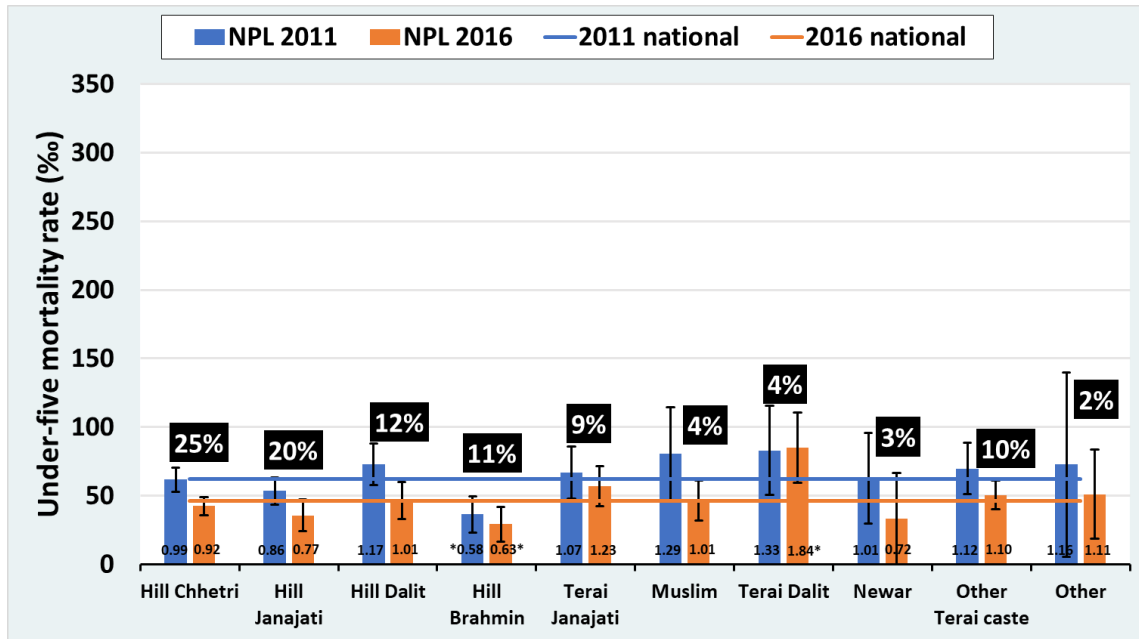
Mozambique



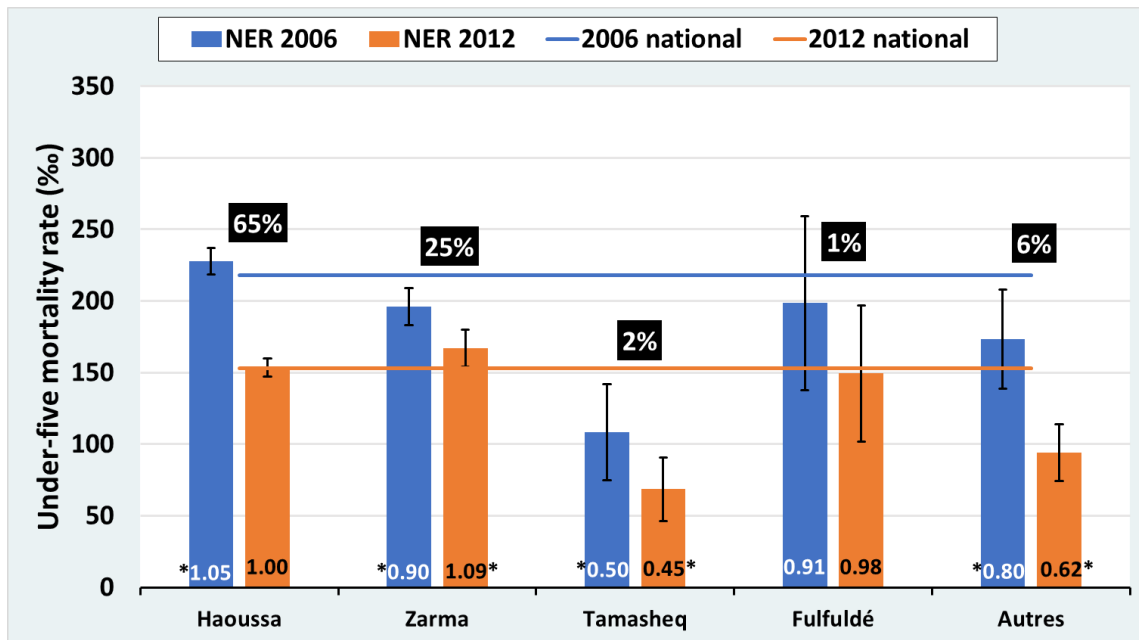
Namibia



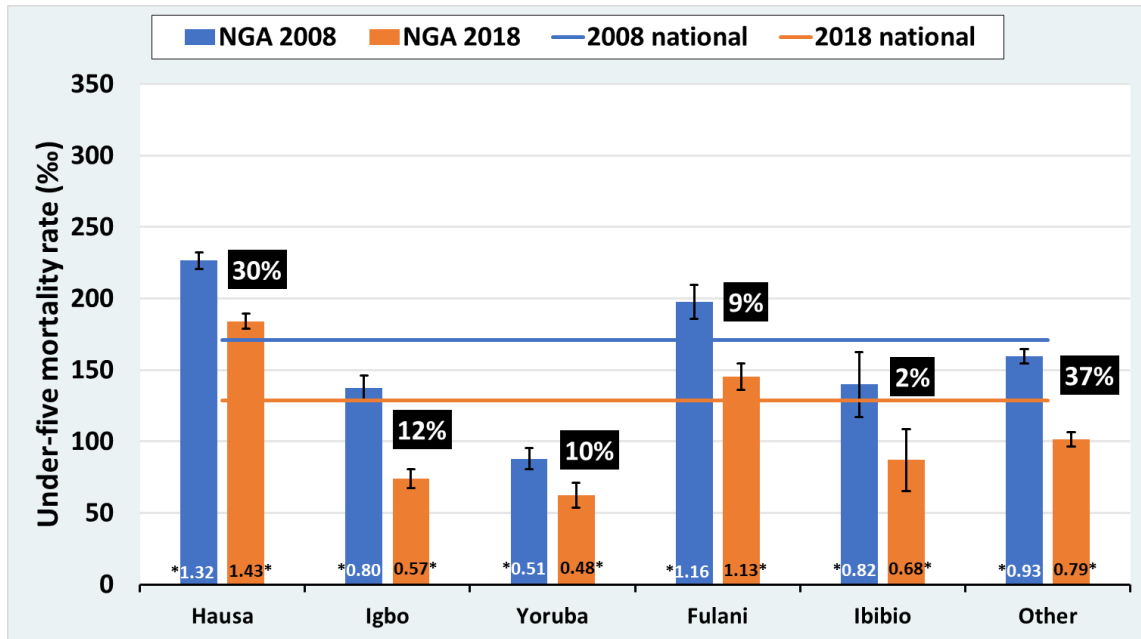
Nepal



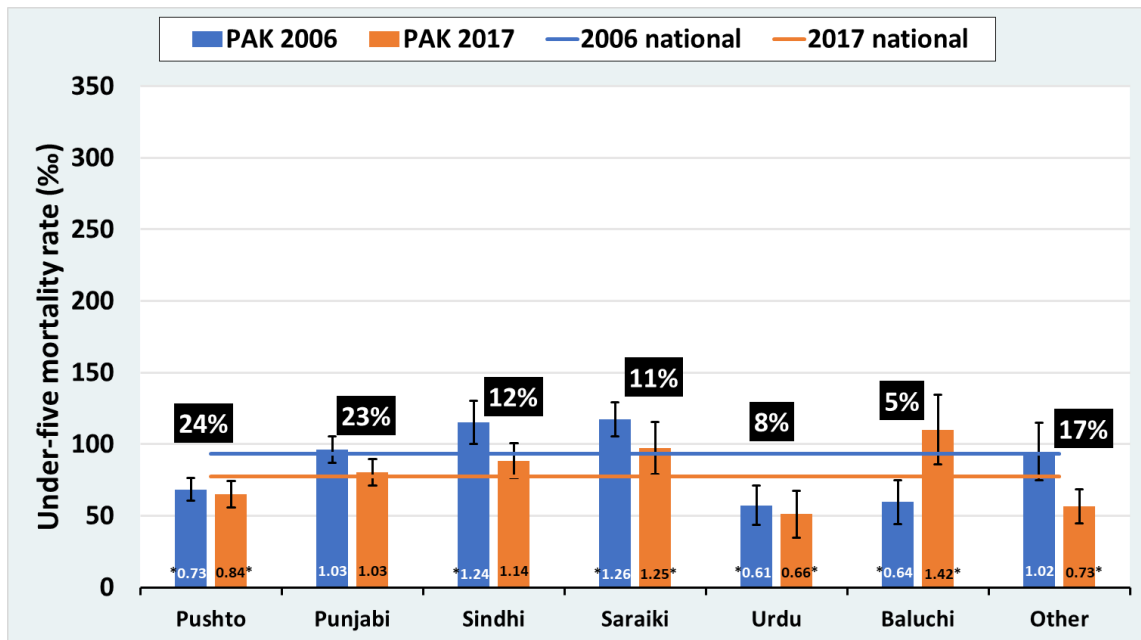
Niger



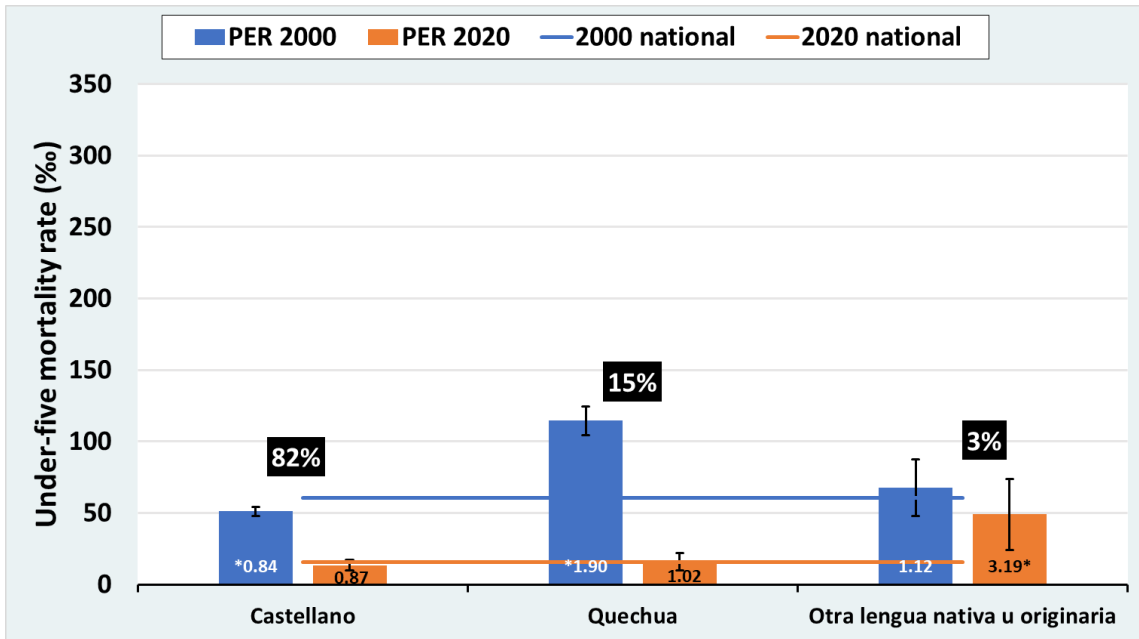
Nigeria



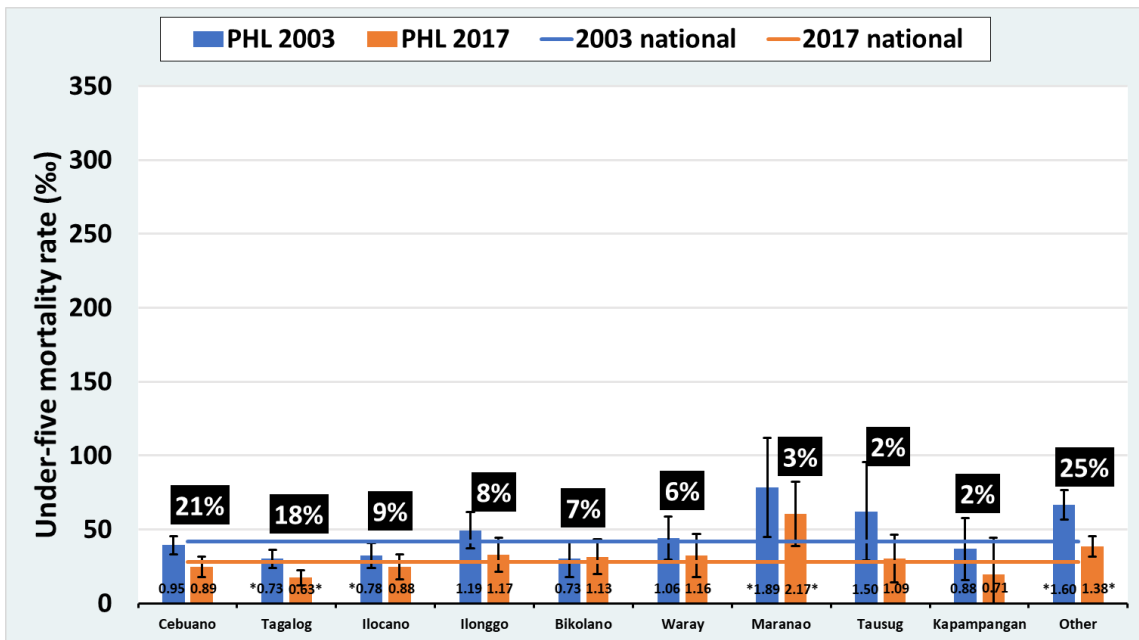
Pakistan



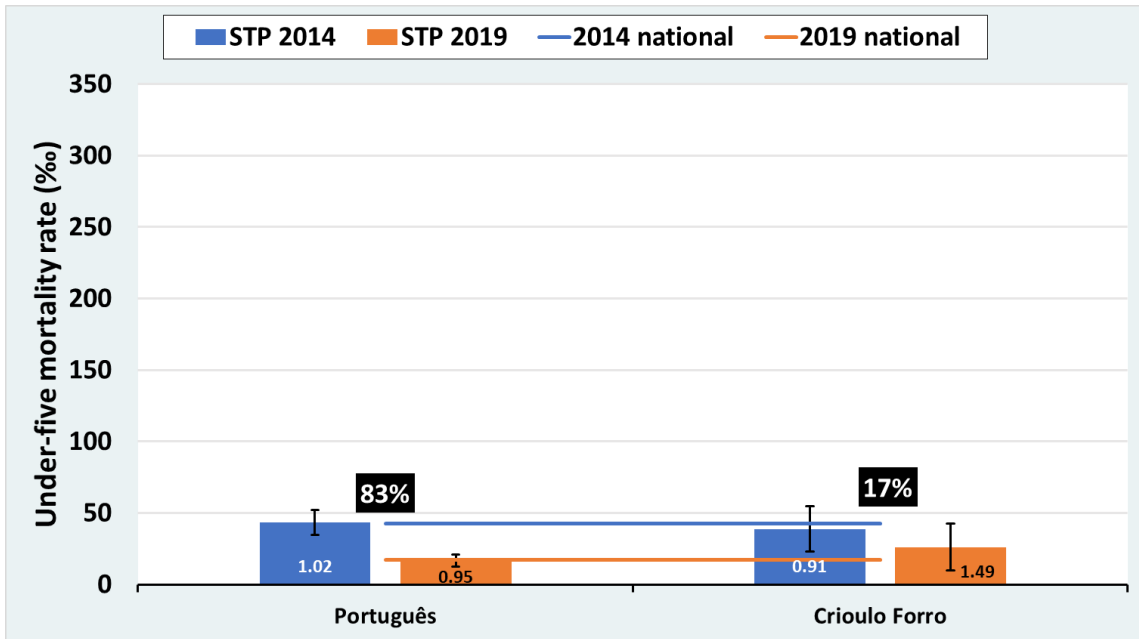
Peru



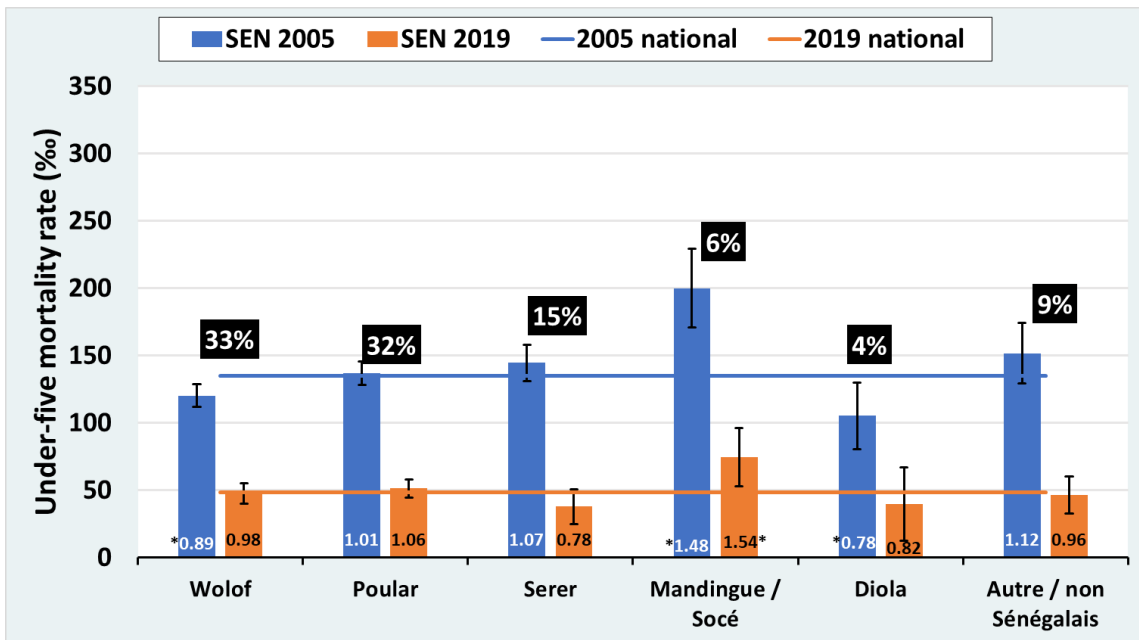
Philippines



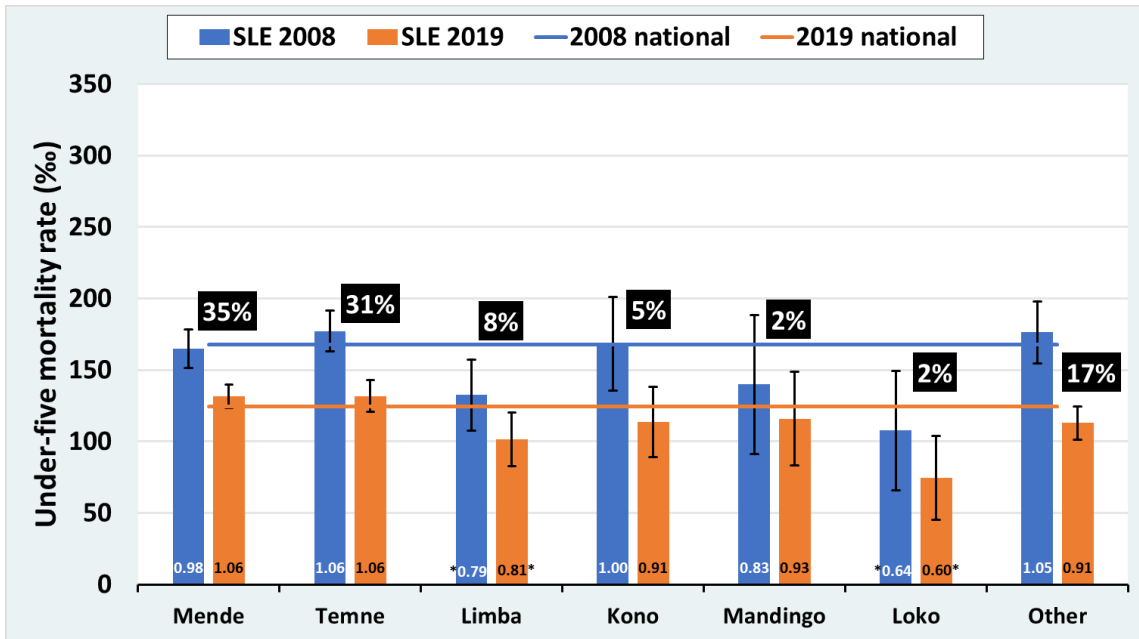
Sao Tome and Principe



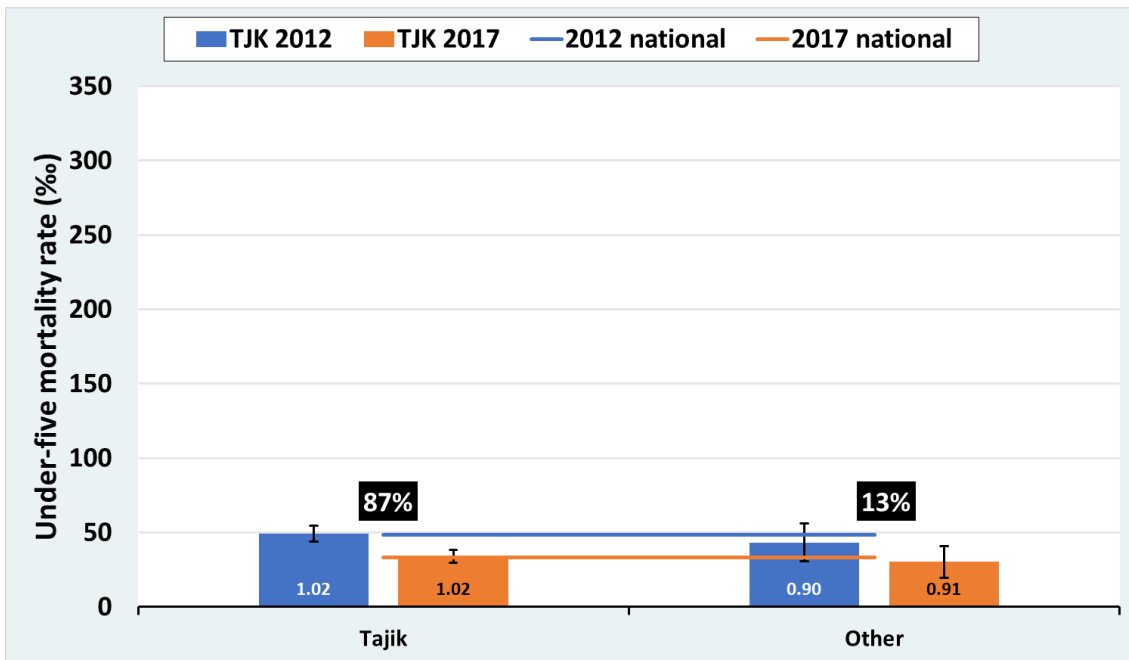
Senegal



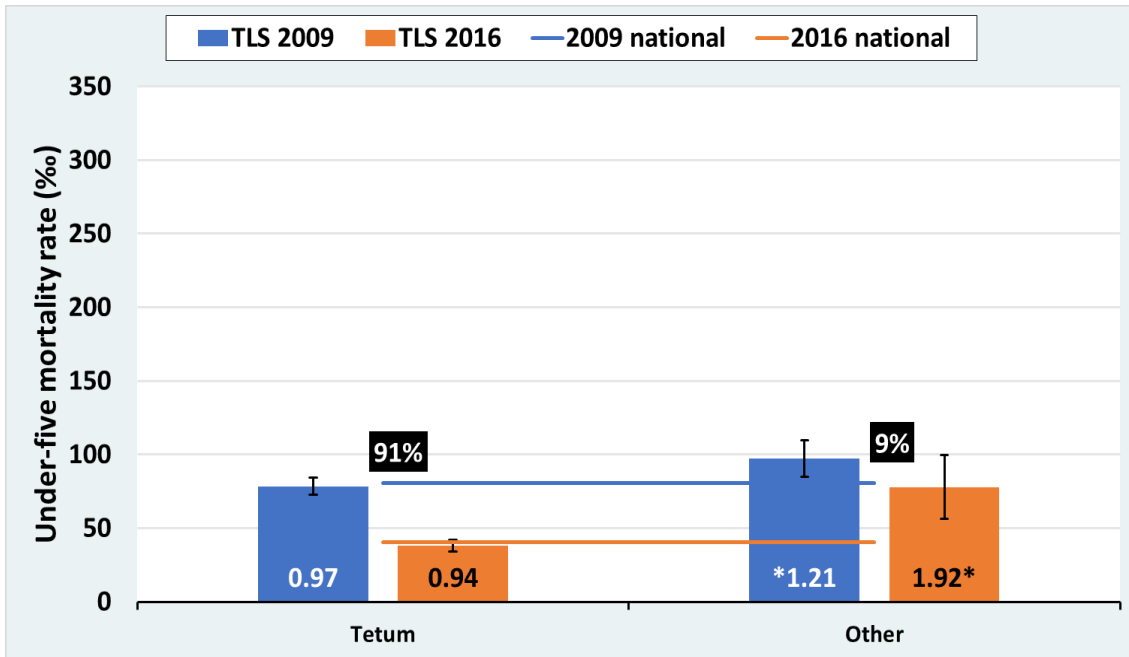
Sierra Leone



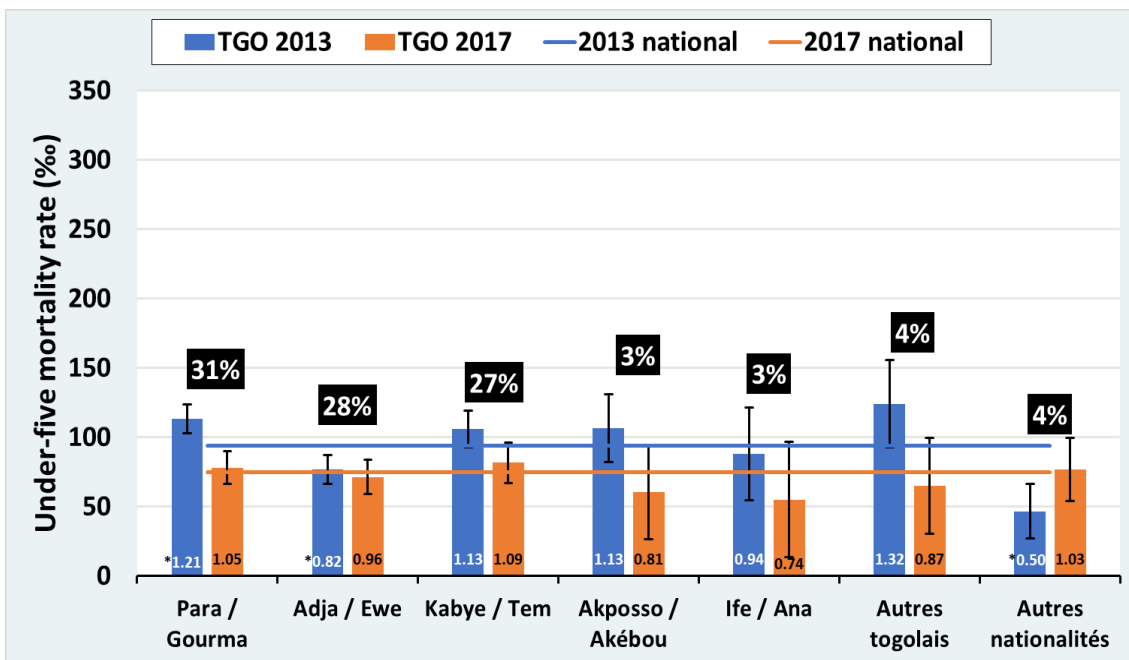
Tajikistan



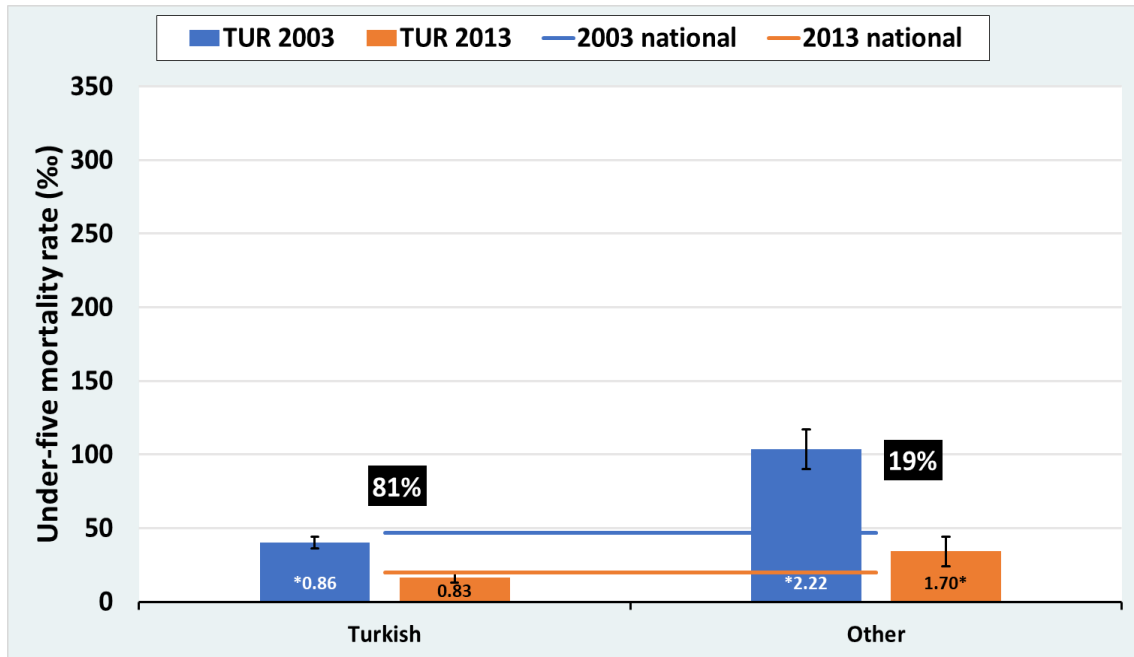
Timor-Leste



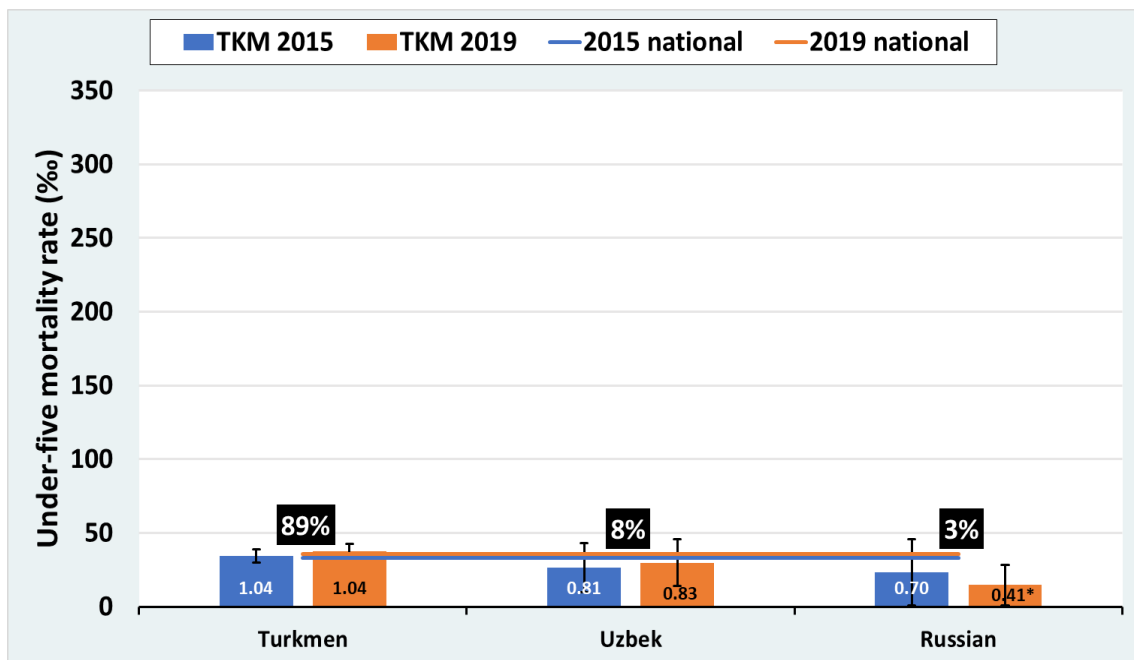
Togo



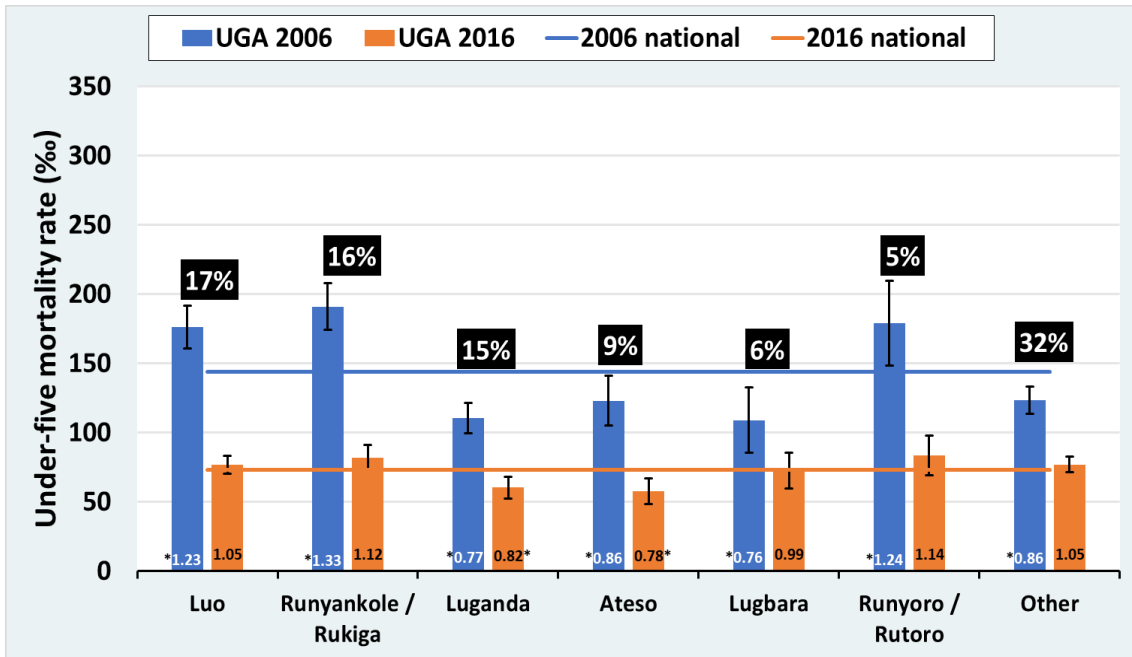
Türkiye



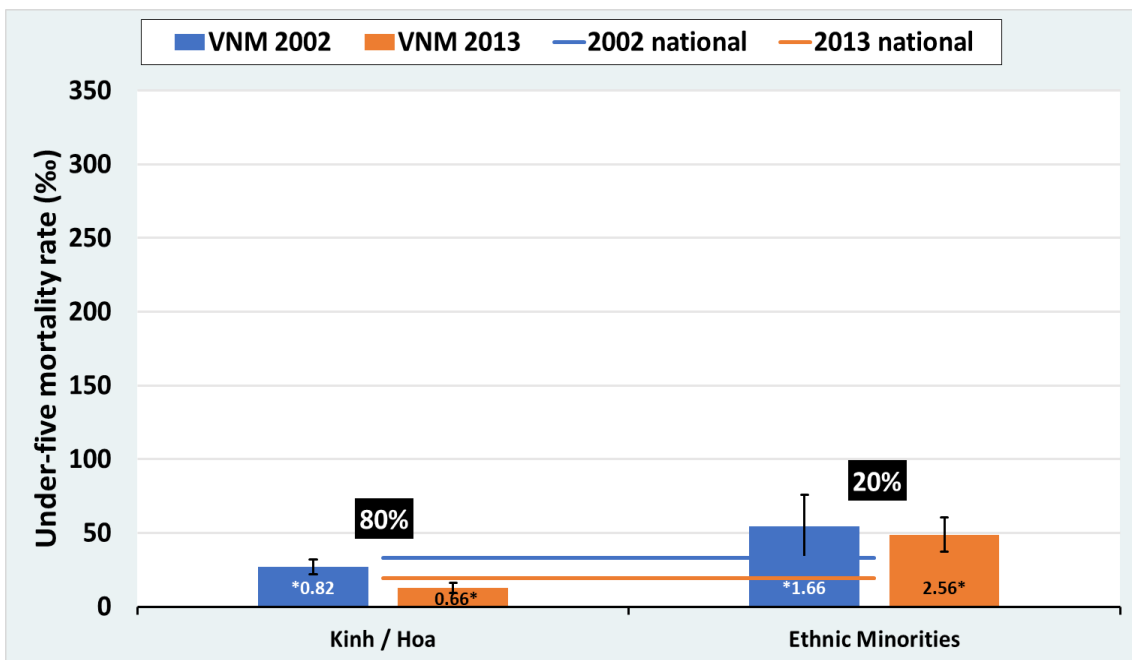
Turkmenistan



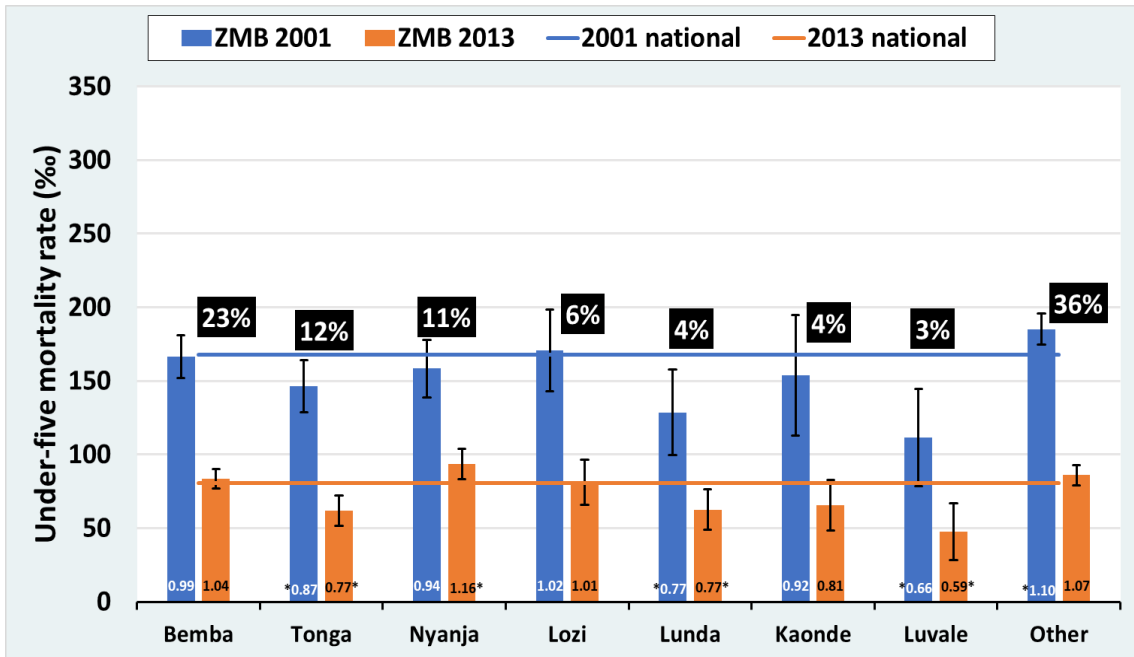
Uganda



Vietnam



Zambia



Zimbabwe

