

(a)

DBC1 COBRA F →

+743
AACACACTAGCACCACATCAAGTTCCCACCATGGTGCACAC**CGT****CGGGAG****CGCGCG**GGGACACACAC**CG**CCACTCACTCAAACCC**CG**CAATTAGCCCTTT
→

GAGCCCCAGGCACAGGAACCCCTCCCTAGAACTGGAGAAGACTTGGAGG**CGGCG**GGG**CG**CCAGGTGAAGAG**CG**GACAAGGGTGC**CG**GTAGGGGGA
1 2 3 4 5

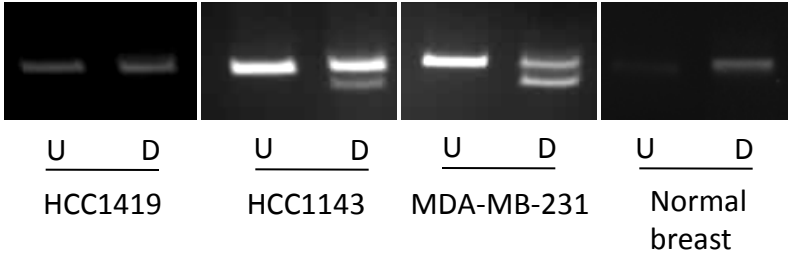
GGGGCAGAGGAG**CGCG**GGGAC**CG**CCCC**CG**AATG**CG**GCC**CG**GGGC**CG**GGTCCAAGGGCAG**CG**GGGCTG**CG**GGG**CG**CTGCACCC**CGGCGCG**CCTTACCTGG
6 7 8 9 10 11 12 13 14 15 16 17 18

AGTCAATGTCC**CG**TCTTTGG**CG**GAGAGCTG**CG**GGAGGA**CG**CTTTTTTATT**CG**GT**CG**GTGGGAACTTGGGAGAGCCCTG**CG**TGCAGCT**CG**CATTC**CG**GG
19 20 21 22 23 24 25 26 27

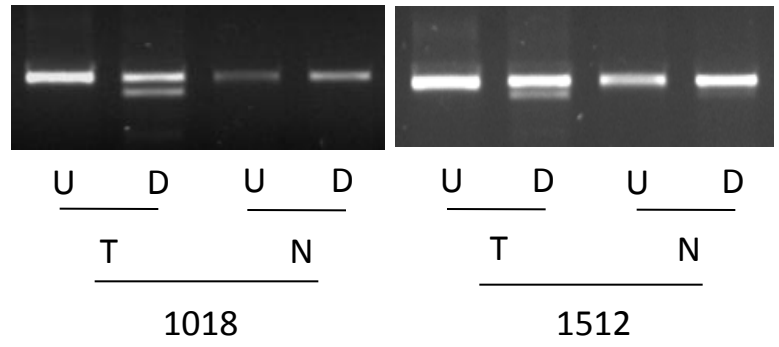
← **DBC1 COBRA R**

CAC**CGGCGCG**GGGACTGCAGG**CG**TGGGGGTACCTGGCTCCTAGCAGCCTGGCTCATACTCA⁺²⁴⁵

(b)



(c)



(d)

